



UML Testing Profile (UTP)

Version 1.1 with change bars

Normative reference: <http://www.omg.org/spec/UTP/1.1>

Machine consumable files: <http://www.omg.org/spec/UTP/20110701/>

Normative:

http://www.omg.org/spec/UTP/20110701/UTP_1.1.xmi

http://www.omg.org/spec/UTP/20110701/UTP_1.1_with_testmanagementxmi

Non-normative:

http://www.omg.org/spec/UTP/20110601/UTP_1.1_non_normative.xmi

http://www.omg.org/spec/UTP/20110601/UTP_1.1_non_normative_with_testmanagement.xmi

Copyright © 2002-2003, Ericsson
Copyright © 2002-2003, International Business Machines Corporation
Copyright © 2002-2003, FOKUS
Copyright © 2002-2003, Motorola, Inc.
Copyright © 2002-2012, Object Management Group
Copyright © 2002-2003, Rational
Copyright © 2002-2003, Softeam
Copyright © 2002-2003, Telelogic

USE OF SPECIFICATION - TERMS, CONDITIONS & NOTICES

The material in this document details an Object Management Group specification in accordance with the terms, conditions and notices set forth below. This document does not represent a commitment to implement any portion of this specification in any company's products. The information contained in this document is subject to change without notice.

LICENSES

The companies listed above have granted to the Object Management Group, Inc. (OMG) a nonexclusive, royalty-free, paid up, worldwide license to copy and distribute this document and to modify this document and distribute copies of the modified version. Each of the copyright holders listed above has agreed that no person shall be deemed to have infringed the copyright in the included material of any such copyright holder by reason of having used the specification set forth herein or having conformed any computer software to the specification.

Subject to all of the terms and conditions below, the owners of the copyright in this specification hereby grant you a fully-paid up, non-exclusive, nontransferable, perpetual, worldwide license (without the right to sublicense), to use this specification to create and distribute software and special purpose specifications that are based upon this specification, and to use, copy, and distribute this specification as provided under the Copyright Act; provided that: (1) both the copyright notice identified above and this permission notice appear on any copies of this specification; (2) the use of the specifications is for informational purposes and will not be copied or posted on any network computer or broadcast in any media and will not be otherwise resold or transferred for commercial purposes; and (3) no modifications are made to this specification. This limited permission automatically terminates without notice if you breach any of these terms or conditions. Upon termination, you will destroy immediately any copies of the specifications in your possession or control.

PATENTS

The attention of adopters is directed to the possibility that compliance with or adoption of OMG specifications may require use of an invention covered by patent rights. OMG shall not be responsible for identifying patents for which a license may be required by any OMG specification, or for conducting legal inquiries into the legal validity or scope of those patents that are brought to its attention. OMG specifications are prospective and advisory only. Prospective users are responsible for protecting themselves against liability for infringement of patents.

GENERAL USE RESTRICTIONS

Any unauthorized use of this specification may violate copyright laws, trademark laws, and communications regulations and statutes. This document contains information which is protected by copyright. All Rights Reserved. No part of this work covered by copyright herein may be reproduced or used in any form or by any means--graphic, electronic, or mechanical, including photocopying, recording, taping, or information storage and retrieval systems--without permission of the copyright owner.

DISCLAIMER OF WARRANTY

WHILE THIS PUBLICATION IS BELIEVED TO BE ACCURATE, IT IS PROVIDED "AS IS" AND MAY CONTAIN ERRORS OR MISPRINTS. THE OBJECT MANAGEMENT GROUP AND THE COMPANIES LISTED ABOVE MAKE NO WARRANTY OF ANY KIND, EXPRESS OR IMPLIED, WITH REGARD TO THIS PUBLICATION, INCLUDING BUT NOT LIMITED TO ANY WARRANTY OF TITLE OR OWNERSHIP, IMPLIED WARRANTY OF MERCHANTABILITY OR WARRANTY OF FITNESS FOR A PARTICULAR PURPOSE OR USE. IN NO EVENT SHALL THE OBJECT MANAGEMENT GROUP OR ANY OF THE COMPANIES LISTED ABOVE BE LIABLE FOR ERRORS CONTAINED HEREIN OR FOR DIRECT, INDIRECT, INCIDENTAL, SPECIAL, CONSEQUENTIAL, RELIANCE OR COVER DAMAGES, INCLUDING LOSS OF PROFITS, REVENUE, DATA OR USE, INCURRED BY ANY USER OR ANY THIRD PARTY IN CONNECTION WITH THE FURNISHING, PERFORMANCE, OR USE OF THIS MATERIAL, EVEN IF ADVISED OF THE POSSIBILITY OF SUCH DAMAGES.

The entire risk as to the quality and performance of software developed using this specification is borne by you. This disclaimer of warranty constitutes an essential part of the license granted to you to use this specification.

RESTRICTED RIGHTS LEGEND

Use, duplication or disclosure by the U.S. Government is subject to the restrictions set forth in subparagraph (c) (1) (ii) of The Rights in Technical Data and Computer Software Clause at DFARS 252.227-7013 or in subparagraph (c)(1) and (2) of the Commercial Computer Software - Restricted Rights clauses at 48 C.F.R. 52.227-19 or as specified in 48 C.F.R. 227-7202-2 of the DoD F.A.R. Supplement and its successors, or as specified in 48 C.F.R. 12.212 of the Federal Acquisition Regulations and its successors, as applicable. The specification copyright owners are as indicated above and may be contacted through the Object Management Group, 140 Kendrick Street, Needham, MA 02494, U.S.A.

TRADEMARKS

MDA®, Model Driven Architecture®, UML®, UML Cube logo®, OMG Logo®, CORBA® and XMI® are registered trademarks of the Object Management Group, Inc., and Object Management Group™, OMG™, Unified Modeling Language™, Model Driven Architecture Logo™, Model Driven Architecture Diagram™, CORBA logos™, XMI Logo™, CWM™, CWM Logo™, IIOP™, IMM™, MOF™, OMG Interface Definition Language (IDL)™, and OMG Systems Modeling Language (OMG SysML)™ are trademarks of the Object Management Group. All other products or company names mentioned are used for identification purposes only, and may be trademarks of their respective owners.

COMPLIANCE

The copyright holders listed above acknowledge that the Object Management Group (acting itself or through its designees) is and shall at all times be the sole entity that may authorize developers, suppliers and sellers of computer software to use certification marks, trademarks or other special designations to indicate compliance with these materials. Software developed under the terms of this license may claim compliance or conformance with this specification if and only if the software compliance is of a nature fully matching the applicable compliance points as stated in the specification. Software developed only partially matching the applicable compliance points may claim only that the software was based on this specification, but may not claim compliance or conformance with this specification. In the event that testing suites are implemented or approved by Object Management Group, Inc., software developed using this specification may claim compliance or conformance with the specification only if the software satisfactorily completes the testing suites.

OMG's Issue Reporting Procedure

All OMG specifications are subject to continuous review and improvement. As part of this process we encourage readers to report any ambiguities, inconsistencies, or inaccuracies they may find by completing the Issue Reporting Form listed on the main web page <http://www.omg.org>, under Documents, Report a Bug/Issue (http://www.omg.org/report_issue.htm).

Table of Contents

| | |
|---|-----|
| Preface | iii |
| 1 Scope | 1 |
| 2 Conformance | 1 |
| 2.1 Summary of optional versus mandatory features | 1 |
| 2.2 Compliance points | 1 |
| 3 References | 2 |
| 3.1 Normative References | 2 |
| 3.2 Informative References | 2 |
| 3.3 Terms and Definitions | 3 |
| 4 Symbols and Acronyms | 5 |
| 5 Additional Information | 5 |
| 6 Acknowledgements | 5 |
| 6.1 Guide to material in the specification | 6 |
| 7 The UML Testing Profile (UTP) | 9 |
| 7.1 Overview | 9 |
| 7.2 Test Architecture | 9 |
| 7.2.1 Abstract Syntax | 10 |
| 7.2.2 Stereotype Descriptions | 10 |
| 7.3 Test Behavior | 13 |
| 7.3.1 Abstract Syntax | 14 |
| 7.3.2 Stereotype Descriptions | 15 |
| 7.4 Test Data | 28 |
| 7.4.1 Abstract Syntax | 28 |
| 7.4.2 Stereotype Descriptions | 29 |
| 7.5 Timing Concepts | 33 |
| 7.5.1 Abstract Syntax | 33 |
| 7.5.2 Stereotype Descriptions | 34 |
| Annex A - Mappings | 43 |
| Annex B - Examples | 55 |

| | |
|---|-----|
| Annex C - MOF-based Metamodel..... | 77 |
| Annex D - Scheduling..... | 89 |
| Annex E - XMI Schema | 93 |
| Annex F - Test Management Concepts..... | 101 |

Preface

About the Object Management Group

OMG

Founded in 1989, the Object Management Group, Inc. (OMG) is an open membership, not-for-profit computer industry standards consortium that produces and maintains computer industry specifications for interoperable, portable and reusable enterprise applications in distributed, heterogeneous environments. Membership includes Information Technology vendors, end users, government agencies and academia.

OMG member companies write, adopt, and maintain its specifications following a mature, open process. OMG's specifications implement the Model Driven Architecture® (MDA®), maximizing ROI through a full-lifecycle approach to enterprise integration that covers multiple operating systems, programming languages, middleware and networking infrastructures, and software development environments. OMG's specifications include: UML® (Unified Modeling Language™); CORBA® (Common Object Request Broker Architecture); CWM™ (Common Warehouse Metamodel); and industry-specific standards for dozens of vertical markets.

More information on the OMG is available at <http://www.omg.org/>.

OMG Specifications

As noted, OMG specifications address middleware, modeling and vertical domain frameworks. A catalog of all OMG Specifications is available from the OMG website at:

http://www.omg.org/technology/documents/spec_catalog.htm

Specifications within the Catalog are organized by the following categories:

Business Modeling Specifications

Middleware Specifications

- CORBA/IIOP
- Data Distribution Services
- Specialized CORBA

IDL/Language Mapping Specifications

Modeling and Metadata Specifications

- UML, MOF, CWM, XMI
- UML Profile

Modernization Specifications

Platform Independent Model (PIM), Platform Specific Model (PSM), Interface Specifications

- CORBAServices
- CORBAFacilities

OMG Domain Specifications

CORBA Embedded Intelligence Specifications

CORBA Security Specifications

All of OMG's formal specifications may be downloaded without charge from our website. (Products implementing OMG specifications are available from individual suppliers.) Copies of specifications, available in PostScript and PDF format, may be obtained from the Specifications Catalog cited above or by contacting the Object Management Group, Inc. at:

OMG Headquarters
140 Kendrick Street
Building A, Suite 300
Needham, MA 02494
USA
Tel: +1-781-444-0404
Fax: +1-781-444-0320
Email: pubs@omg.org

Certain OMG specifications are also available as ISO standards. Please consult <http://www.iso.org>

Typographical Conventions

The type styles shown below are used in this document to distinguish programming statements from ordinary English. However, these conventions are not used in tables or section headings where no distinction is necessary.

Times/Times New Roman - 10 pt.: Standard body text

Helvetica/Arial - 10 pt. Bold: OMG Interface Definition Language (OMG IDL) and syntax elements.

Courier - 10 pt. Bold: Programming language elements.

Helvetica/Arial - 10 pt: Exceptions

Note – Terms that appear in *italics* are defined in the glossary. Italic text also represents the name of a document, specification, or other publication.

Issues

The reader is encouraged to report any technical or editing issues/problems with this specification to http://www.omg.org/report_issue.htm.

1 Scope

The UML Testing Profile defines a language for designing, visualizing, specifying, analyzing, constructing, and documenting the artifacts of test systems. It is a test modeling language that can be used with all major object and component technologies and applied to testing systems in various application domains. The UML Testing Profile can be used stand alone for the handling of test artifacts or in an integrated manner with UML for a handling of system and test artifacts together.

The UML Testing Profile extends UML with test specific concepts like test components, verdicts, defaults, etc. These concepts are grouped into concepts for test architecture, test data, test behavior, and time. Being a profile, the UML testing profile seamlessly integrates into UML: it is based on the UML metamodel and reuses UML syntax.

The UML Testing Profile is based on the UML 2.3 specification. The UML Testing Profile is defined by using the metamodeling approach of UML. It has been architected with the following design principles in mind:

- UML integration: as a real UML profile, the UML Testing Profile is defined on the basis of the metamodel provided in the UML superstructure volume and follows the principles of UML profiles as defined in the UML Infrastructure 2.3.
- Reuse and minimality: wherever possible, the UML Testing Profile makes direct use of the UML concepts and extends them and adds new concepts only where needed. Only those concepts are extended/added to UML, which have been demonstrated in the software, hardware, and protocol testing area to be of central relevance to the definition of test artifacts and are not part of UML.

2 Conformance

2.1 Summary of optional versus mandatory features

Mandatory features for a UML Testing Profile implementation are the concepts for Test Architecture, Test Behavior, Test Data, and Time Concepts.

2.2 Compliance points

The compliance points are as follows:

1. UML Profile for Testing: A compliant implementation supports the UML profiling mechanism, the UML entities extended by the UML Testing Profile, and the stereotyped entities of the UML Testing Profile.
2. MOF-based Metamodel for Testing: The compliant implementation supports all of the entities in the MOF-based metamodel.
3. Notation: If graphical notation is used, the compliant implementation recognizably supports the notation defined by the UML Testing Profile specification.
4. XMI: An XMI compliant implementation of the UML Testing Profile and/or MOF metamodel provides the XMI exchange mechanism using the UML Testing Profile XMI schema definitions.
5. Static Requirements: The compliant implementation checks the specified constraints automatically.

Compliance requires meeting point 1 and/or 2. Points 3-5 are optional and can be claimed in any combination. A compliance statement should address every point.

3 References

3.1 Normative References

The following normative documents contain provisions which, through reference in this text, constitute provisions of this specification. For dated references subsequent amendments to, or revisions of, any of these publications do not apply.

- [UMLi] Unified Modeling Language (UML) Specification: Infrastructure, version 2.3, formal/2010-05-03, 2010
- [UMLs] Unified Modeling Language (UML) Specification: Superstructure, version 2.3, formal/2010-05-05, 2010
- [OCL] Object Constraint Language (OCL), version 2.2, formal/2010-02-01, 2010
- [MOF] Meta Object Facility (MOF) Core Specification, version 2.0, formal/2006-01-01, 2010

3.2 Informative References

- OMG ADTF: *RFP on a UML Testing Profile*, ad/01-07-08, 2001.
- OMG ADTF: *RFP on UML 2.0 Superstructure*, ad/00-09-02, 2000.
- OMG ADTF: *Final Adopted Specification on Unified Modeling Language: Superstructure, version 2.0*, ptc/03-08-02, 2003.
- OMG ADTF: *RFP on UML 2.0 Infrastructure*, ad/00-09-01, 2000.
- OMG ADTF: *Final Adopted Specification on: Unified Modeling Language: Infrastructure, version 2.0*, ptc/03-09-15, 2003.
- [JUNIT] JUnit: <http://www.junit.org>.
- [TTCN3p1] ES 201 873-1: The Testing and Test Control Notation version 3; Part 1: TTCN-3 Core Language. V4.2.1 (2010-07), 2010.
- [TTCN3p3] ETSI ES 201 873-3: The Testing and Test Control Notation version 3; Part 3: TTCN-3 Graphical Presentation Format (GFT). V3.2.1 (2007-02), 2010.
- [MSC] ITU-T Z.120: Message Sequence Charts (MSC), Nov. 1999.
- [SysML] OMG Systems Modeling Language (OMG SysML), Version 1.2, formal/2010-06-01, 2010.
- [ISTQB] ISTQB Standard glossary of terms used in Software Testing, Version 2.1 (dd. April 1st, 2010).
- [IEEE1012] 1012-1998 - IEEE Standard for Software Verification and Validation, 1998

4 Terms and Definitions

This sub clause provides the terms and concepts of the UML Testing Profile.

| | |
|---------------------|--|
| Arbiter | See description of interface Arbiter |
| Black box testing | A test conducted without knowledge of the internal structure of the system under test. |
| Coding Rule | See description of «Coding Rule» |
| Component testing | The testing of individual software components (see [ISTQB]). |
| Coordination | Concurrent (and potentially distributed) test components have to be coordinated both functionally and in time in order to assure deterministic and repeatable test executions resulting in well-defined test verdicts. Coordination is done explicitly with normal message exchange between components or implicitly with general ordering mechanisms. |
| Data Partition | See description «Data Partition» |
| Data Pool | See description «DataPool on page 29» |
| Default | See description «Default on page 15» |
| Glass box testing | See White box testing |
| Integration testing | Testing performed to expose defects in the interfaces and in the interactions between integrated components or systems (see [ISQTB]). |
| LogAction | See description «FinishAction on page 20» |
| Observation | Test data reflecting the reactions from the SUT and used to assess the SUT reactions which are typically the result of a stimulus sent to the SUT. |
| Scheduler | See description of interface Scheduler in the Annex. |
| Stimulus | Test data sent to the SUT in order to control it and to make assessments about the SUT when receiving the SUT reactions to these stimuli. |
| SUT | See description «SUT on page 11» |
| System testing | The process of testing an integrated system to verify that it meets specified requirements (see [ISQTB]). |
| Test behavior | Dynamic aspects of a test case or parts of the test components involved in the test case. |
| Test case | See description «TestCase on page 22» |
| Test Component | See description «TestComponent on page 12» |
| Test Configuration | The collection of test component objects and of connections between the test component objects and to the SUT. The test configuration defines both (1) test component objects and connections when a test case is started (the initial test configuration) and (2) the maximal number of test component objects and connections during the test execution. |
| Test Context | See description «TestContext on page 12» |
| Test Control | A test control is a specification for the invocation of test cases within a test context. It is a technical specification of how the SUT should be tested with the given test context. |

| | | |
|--|-------------------|--|
| | Test Invocation | A test case can be invoked with specific parameters and within a specific context. The test invocation leads to the execution of the test case. The test invocation is denoted in the test log. |
| | Test Log | See description «TestLog on page 23» |
| | Test Objective | See description «TestObjective on page 25» |
| | Testing | The process consisting of all life cycle activities, both static and dynamic, concerned with planning, preparation and evaluation of software products and related work products to determine that they satisfy specified requirements, to demonstrate that they are fit for purpose and to detect defects. [ISTQB]. |
| | | Any activity which provide information on the qualities of a system under test. |
| | Timer | See description of “Timer (a predefined interface) on page 40 |
| | Timezone | See description of “Time (a predefined type) on page 38 |
| | Unit testing | See Component testing. |
| | Utility Part | A part of the test system representing miscellaneous components that help test components to realize their test behavior. Examples of utility parts are miscellaneous features of the test system. |
| | Validation | The process of determining whether the product of each step of the development process satisfies all of the “requirements” implemented from the previous step (see [IEEE1012]). Answers: Did we build the product right. |
| | Validation Action | See description of «ValidationAction on page 26» |
| | Verification | The process of determining whether or not the software and/or its specification meet system requirements and user needs at both functional and performance levels (see [IEEE1012]). Answers: Did we build the right product. |
| | White box testing | Testing based on an analysis of the internal structure of the component or system. |
| | Wildcard | Wildcards allow the user to explicitly specify whether the value is present or not, and/or whether it is of any value. Wildcards are special symbols to represent values or ranges of values. Wildcards are used instead of symbols within instance specifications. Three wildcards exist: a wildcard for any value, a wildcard for any value or no value at all (i.e. an omitted value), and a wildcard for an omitted value. |
| | | See description of «LiteralAny on page 32» and «LiteralAnyOrNull on page 32» |

5 Symbols and Acronyms

| | |
|--------|--|
| MOF | Meta-Object Facility |
| OCL | Object Constraint Language |
| UML | Unified Modeling Language |
| SysML | Systems Modeling Language |
| TTCN-3 | Testing and Test Control Notation, version 3 |
| OMG | Object Management Group |
| CORBA | Common Object Request Broker Architecture |
| CWM | Common Warehouse Metamodel |
| MDA | Model-Driven Architecture |
| XMI | XML: Metadata Interchange |
| GIOP | General Inter-ORB Protocol |
| IIOP | Internet Inter-ORB Protocol |
| ASN.1 | Abstract Syntax Notation One |
| PER | Packed Encoded Rules |
| IDL | Interface Definition Language |
| XML | eXtensible Markup Language |
| MSC | Message Sequence Charts |
| GFT | Graphical Presentation Format |

6 Additional Information

6.1 Acknowledgements

The following companies submitted and/or supported parts of the original specification:

- Fraunhofer FOKUS
- Ericsson
- Motorola
- University of Lübeck
- Telelogic
- IBM
- Softeam
- iLogix

- IRISA
- Scapa Technologies

The following persons were members of the team that designed and wrote this specification: Ina Schieferdecker, Øystein Haugen, Paul Baker, Zhen Ru Dai, Jens Grabowski, Serge Lucio, Eric Samuelson, Clay Williams.

The following companies submitted and/or supported parts of the 1.1 RTF of this specification:

- Fraunhofer FOKUS
- KnowGravity, Inc.
- Lockheed Martin
- SINTEF
- sepp.med GmbH
- UFR Sciences et Techniques
- Softeam
- THALES
- IBM
- NoMagic, Inc.
- University of Applied Sciences Hamburg
- University of Pitesti

The following persons were members who submitted and/or supported parts of the 1.1 RTF of this specification: Marc-Florian Wendland, Markus Schacher, Jon D. Hagar, Ina Schieferdecker, Armin Metzger, Zhen Ru Dai, Fabien Perureux, Eldad Palachi, Laurent Rioux, J.D. Baker, Alin Stefanescu, Andreas Hoffmann, Max Bureck

6.2 Guide to material in the specification

So far, UML technology has focused primarily on the definition of system structure and behavior and provides limited means for describing test procedures only. However, with the approach towards system engineering according to model-driven architectures with automated code generation, the need for solid conformance testing, certification, and branding is increased.

The UML Testing Profile

- is based upon the UML 2.3 specification,
- enables the specification of tests for structural (static) and behavioral (dynamic) aspects of computational UML models, and
- is capable of inter-operation with existing test technologies for black box testing.

The work is based on recent developments in black-box testing such as the results from TTCN-3 (Testing and Test Control Notation) and COTE (Component Testing using the Unified Modeling Language). The UML Testing Profile is defined such that mappings onto TTCN-3 and JUnit are possible in order to enable the reuse of existing test infrastructures.

Major generalizations are:

- The separation of test behavior and test evaluation by introducing a new test component: the arbiter. This enables the easy reuse of test behavior for other testing kinds.

- The integration of the concepts test control, test group, and test case into just one concept of a test case, which can be decomposed into several lower level test cases. This enables the easy reuse of test case definitions in various hierarchies. A test context is just a top-level test case.
- The integration of defaults for handling unexpected behaviors, verdicts, and wildcards.
- The support of data partitions not only for observations, but also for stimuli. This allows to describe test cases logically without having the need to define the stimulus data completely but as a set or range of values.

Furthermore, some additions widen the practical usability of the UML Testing Profile:

- A test configuration (as an internal structure of a test context) is used to enable the definition of test components realizing a test case, it describes the initial setup of the test components and the connection to the SUT and between each other.
- A deployment diagram is used to place requirements regarding test execution on certain nodes in a network.

The UML Testing Profile provides concepts for:

- test behavior addressing observations and activities during a test,
- test architecture (i.e., the elements and their relationships involved in a test),
- test data (i.e., the structures and meaning of values to be processed in a test), and
- time (i.e., the time constraints and time observation for test execution).

Clause 7 contains the abstract syntax and the terminology for these concepts. Annex A - Mappings defines a mapping between UTP concepts and TTCN-3 as well as JUnit. Annex B - Examples provides examples of how the UTP can be applied.

7 The UML Testing Profile (UTP)

7.1 Overview

Being a UML profile, the UML Testing Profile inherits the characteristics of UML:

- Layering: separate concerns across metalayers of abstraction (along the 4-layer metamodel architecture).
- Partitioning: use of packages for coarse- or fine-grained structures.
- Extensibility: profiling the test profile for an adaptation to particular platforms (e.g., J2EE/EJB, .NET/COM+) and domains (e.g., finance, telecommunications, aerospace).

The UML Testing Profile is organized in four logical groups of concepts:

1. Test architecture defining concepts related to structural aspects of test specifications and test configuration.
2. Test data defining concepts for test data used in test procedures.
3. Test behavior defining concepts related to the dynamic aspects of test procedures.
4. Test time defining concepts for a time quantified definition of test procedures.

The UML Testing Profile is specified by:

- Giving the terminology for a basic understanding of the UML Testing Profile concepts.
- Defining the UML 2.3 based metamodel of UML Testing Profile.
- Defining a MOF model for the pure UML Testing Profile enabling the use of the UML Testing Profile independent of UML.
- Giving examples to demonstrate the use of the UML Testing Profile for component-level and system-level tests.
- Outlining mappings from the UML Testing Profile to test execution environments like JUnit and TTCN-3.

All sub clauses form the definition of the UML Testing Profile. In case of ambiguities, the UML 2.3 based metamodel takes precedence.

Comments on Notations

As a native UML profile, the UML Testing Profile inherits the predefined visualization capabilities of UML (see [UMLi] Clause 18 Profiles, in particular sub clause 18.3.8 Stereotypes). For some concepts additional notations are defined, which are explicitly denoted and described in the Notation sub clause of each UTP stereotype. In cases where no additional notation is defined, the phrase “No additional notation for «*StereotypeName*» defined” is used.

7.2 Test Architecture

This sub clause contains the concepts needed to describe the elements that the test cases define using the profile. These elements include the test context, which contains a collection of test cases. These cases are realized by a set of test components. The verdict of a test case is determined by an implementation of the arbiter interface.

7.2.1 Abstract Syntax

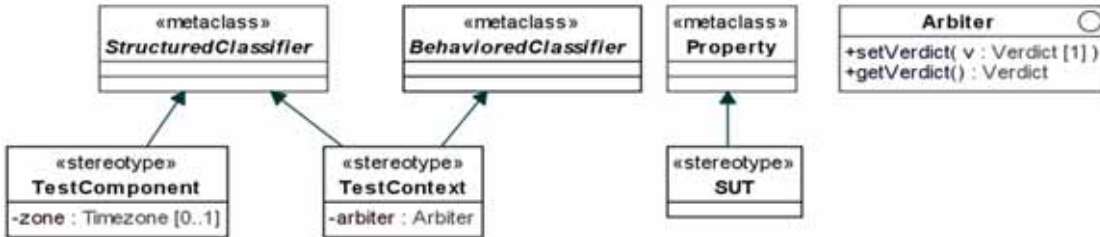


Figure 7.1 Test Architecture

7.2.2 Stereotype Descriptions

7.2.2.1 Arbitrator (a predefined interface)

Description

Arbitrator is a predefined interface defining operations used for arbitration of tests. Test cases, test contexts, and the runtime system can use realizations of this interface to assign verdicts of tests and to retrieve the current verdict of a test (verdicts are discussed in “Verdict (a predefined enumeration)” on page 27).

Generalizations

None

Attributes

None

Operations

- `getVerdict() : Verdict`
Returns the current verdict.
- `setVerdict(v : Verdict)`
Sets a new verdict value.

Semantics

Arbitrator is a predefined interface provided with the UML Testing Profile. The purpose of an arbitrator implementation is to determine the final verdict for a test case. This determination is done according to a particular arbitration strategy, which is provided in the implementation of the arbitrator interface.

The arbitrator interface provides two operations for use in verdict setting: *getVerdict* and *setVerdict*. The *setVerdict* operation is used to provide updated information to the arbitrator by a test component regarding the current status of the test case in which it is participating. Every validation action causes the *setVerdict* operation on the arbitrator implementation to be invoked (see “Test Behavior” on page 13 for more information on validation actions.)

A test case or a test context use the arbiter to evaluate test results and to assign the overall verdict of a test case or test context respectively. There is a default arbitration algorithm based on functional, conformance testing, which generates **Pass**, **Fail**, **Inconclusive**, and **Error** as verdict, where the precedence of the verdicts are defined as **Pass** < **Inconclusive** < **Fail** < **Error**.

The arbitration algorithm can be user-defined, if needed.

Constraints

None

Notation

No additional notation for arbiter defined.

Examples

An example arbiter can be found in Figure B.29.

7.2.2.2 SUT

Description

«SUT» is applied to one or more properties of a classifier to specify that they constitute the system under test. The features and behavior of the SUT is given entirely by the type of the property to which the stereotype is applied.

Extensions

- Property (from UML::CompositeStructures::InternalStructures)

Generalizations

None

Attributes

None

Semantics

The system under test (SUT) is a part of a test context. It refers to a system, subsystem, or component that is being tested. An SUT can consist of several objects. The SUT is stimulated via its public interface operations and signals by the test components. No internals of an SUT are known or accessible during test case execution, due to its black-box nature.

Constraints

None

Notation

No additional notation for «SUT» defined.

Examples

Examples of «SUT» can be found in Figure B.10 and Figure B.24.

7.2.2.3 TestComponent

Description

A test component is commonly an active class with a set of ports and interfaces. Test components are used to specify test cases as interactions between a number of test components.

Extensions

- StructuredClassifier (from UML::CompositeStructures::InternalStructures)

Generalizations

None

Attributes

- zone : Timezone [0..1]
Specifies the timezone to which a test component belongs (Timezones are discussed in “Timezone (a predefined type)” on page 41.

Semantics

A test component is a structured classifier participating in test behaviors. The classifier behavior of a test component can be used to specify low level test behavior, such as test scripts, or it can be generated automatically by deriving the behavior from all test cases in which the component takes part.

The zone attribute is available at run-time, and get timezone action and set timezone action are used to get and set the timezone in run-time. The run-time representation of the timezone is not specified. The initial timezone of the component is specified in the model as a tagged value on the zone attribute.

Constraints

None

Notation

No additional notation for «TestComponent» defined.

Examples

Examples of «TestComponent» can be found in Figure B.9 and Figure B.22.

7.2.2.4 TestContext

Description

A test context acts as a grouping mechanism for a set of test cases. The composite structure of a test context is referred to as test configuration. The classifier behavior of a test context may be used for test control.

Extensions

- StructuredClassifier (from UML::CompositeStructures::InternalStructures)
- BehavoredClassifier (from UML::CommonBehaviors::BasicBehaviors, Communications)

Generalizations

None

Attributes

- arbiter : Arbiter [1]
Realizes the arbiter interface.

Semantics

A test context is both a StructuredClassifier and BehavedClassifier providing the foundation for a test configuration, a collection of test cases (operating on those test cases) and an optional test control, scheduling the execution order of its test cases.

The test configuration is a collection of test component objects and of connections between the test component objects and to the SUT. Test configuration defines both (1) test component objects and connections when a test case is started (the initial test configuration), and (2) the maximal number of test component objects and connections during the test execution. It is established by using the composite structure concepts for StructuredClassifiers.

Test cases are either realized as operations or as owned behavior (both stereotyped with «TestCase») of a test context. If required, test control can be added to a test context by defining a classifier behavior for the test context, describing the order and under what conditions test cases are supposed to be executed.

Constraints

[1] The classifier with «TestContext» applied must be both an instance of StructuredClassifier and BehavedClassifier.

Notation

No additional notation for «TestContext» defined.

Examples

Examples of «TestContext» can be found in Figure B.3, Figure B.9, and Figure B.22.

7.3 Test Behavior

The area of test behavior includes concepts to specify the behavior of tests in the context of a test context (see “TestContext” on page 12). The public test case operations of a test context are the test cases that represent the interface towards the testers. In addition there may be other private or protected test cases that are used as utilities within the concrete realization of the public test cases.

The implementation of test cases is specified by a test behavior. The test behavior may include a number of special constructs defined by the UML Testing Profile.

A test case will return a verdict.

7.3.1 Abstract Syntax

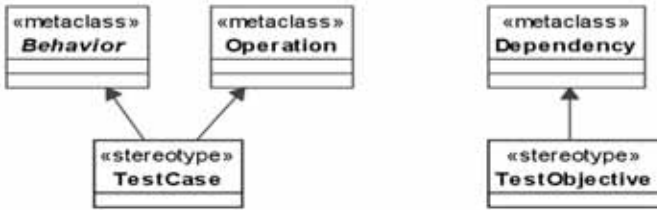


Figure 7.2 - Test case and test objective

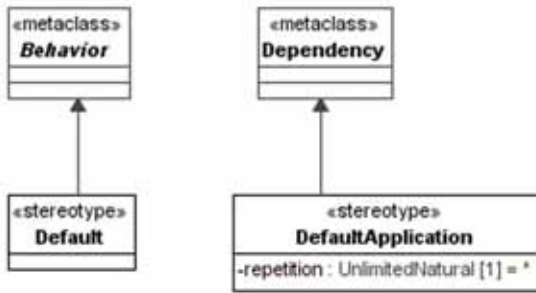


Figure 7.3 Defaults

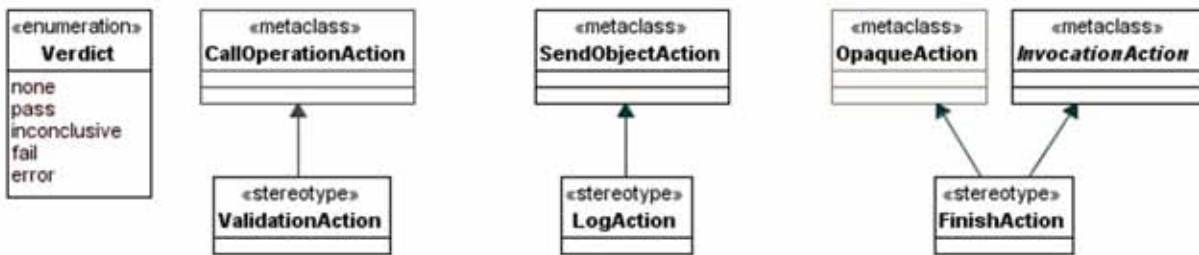


Figure 7.4 Actions

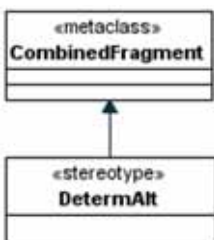


Figure 7.5 - Deterministic Alternative Combined Fragment

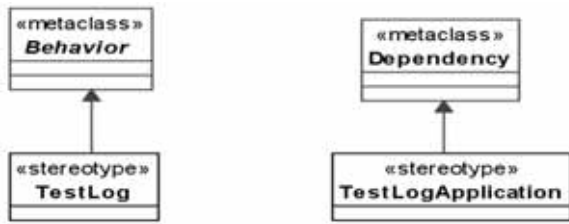


Figure 7.6 - Test Log

7.3.2 Stereotype Descriptions

7.3.2.1 Default

Description

A system specification, expressed in UML, is not necessarily complete. To be complete in this sense means that it specifies every possible trace of execution. In particular if Interactions are used to specify the behavior, the normal situation is that the specification is partial only specifying in detail those scenarios that are of particular importance. In a testing context, however, there is a need to have complete definitions such that the number of erroneous test case executions can be kept to a minimum.

The default specifications are units of specification defined in the UML Testing Profile as a means to make partial definitions of test components complete in a compact, yet flexible way. The UML Testing Profile defines mechanisms for defaults on Interactions as well as State Machines.

The general idea about defaults is the following. A test behavior specification typically describes the normative or expected behaviors for the SUT. However, if during test execution an unexpected behavior is observed, then a default handler is applied. We have included default behavior definitions on several different levels. If the innermost default fail to recognize the observed behavior, the default of the next level is tried.

The reason for designing with defaults rather than making sure that the main description is complete, is to separate the most common and normal situations from the more esoteric and exceptional. The distinction between the main part and the default is up to the designer and the test strategies.

The UML Testing Profile has chosen to associate the default applications to static behavioral structures. In Interactions we may apply defaults to interaction fragments; in State Machines to StateMachines, States, or Regions; and in Activities to Actions and Activities. Since each default in an Interaction applies only to one test component, we attach the defaults on interaction fragments to the intersection between the fragment and the test component.

We said above that default behavior is invoked when the main description cannot describe the observed behavior. More precisely the default mechanism is invoked when a trigger in a State Machine, or message reception in an Interaction, or an action in an Activity is not defined by the main description, or an explicit runtime constraint is violated. The point of default invocation will be well-defined as an event occurrence in Interactions, or a State (-stack) in State Machines, or an accept event action in Activities.

Whenever a default behavior has executed, there is the question of where the main behavior should resume. There are several options, and the UML Testing Profile has chosen to distinguish between these different situations:

- The default execution is considered an interrupt, and the main behavior should resume exactly at the trigger that led to the default interruption. This situation is called *repeat*.

- The default execution is considered a limited disruption such that the resumption should be after the unit to which the executed default was attached. This situation is called *continue*.
- The default execution is considered to conclude the test case execution. The test component should not return to its main description for this test case. This situation can be considered a special case of the continue-situation provided that there exists an action called «FinishAction», which ensures the completion of the test case execution locally for this test component.

We acknowledge that defaults are often described in the notation that the main description is made in. If the main specification is written with Interactions, the defaults will normally be Interactions. But it is possible with hybrid descriptions where, for example, some defaults to a main description written in Interactions are in fact State Machines. For a more precise and detailed description of the semantics of defaults for Interactions and StateMachines the reader is referred to the topics on «Default» and «DefaultApplication».

Extensions

- Behavior (from UML::CommonBehaviors::BasicBehaviors)

Generalizations

None

Attributes

None

Semantics

We describe the semantics of defaults differently for Interaction, Activities, and State Machines since UML itself describes the semantics of these concepts in different terms.

For defaults that are described on Interactions, we define the semantics as an algorithm that combines the traces of the default behavior with the traces of the main description.

The combination algorithm is given here. Assume that there is a main description of an interaction fragment. Its semantics can be calculated to a set of traces. We project this set of traces onto the test component with the default by removing all event occurrences of other lifelines from the traces. The result is a set of traces only involving event occurrences of the test component. This is what we call the main description. Every trace in this set can be split in three portions: a head, a trigger, and a tail. The trigger normally is a receiving event occurrence. One particular trace can therefore be constructed in portions in several ways. The default is a behavior and is therefore also a set of traces, each of which can be divided in two portions: a trigger and a tail.

For every portioned trace in the main description, construct more traces, by concatenating main-head with every default trace provided that main-trigger is different from default-trigger. Retain the information on a trigger that it was originally a default-trigger by a flag. Finally filter out all traces starting with main-head+trigger-with-default-flag if there is another trace in the set starting with main-head+main-trigger and the main-trigger is equal to the trigger-with-default-flag. This makes up the set of traces for the interaction fragment with associated default.

These rules will ensure that main descriptions are considered before defaults, and inner defaults are considered before outer ones.¹

The above rule applies when the default application repetition attribute is set to 0 (called continue). When the default application repetition attribute is greater than 0 (called repeat), the resulting set of traces is more elaborate since the default portions are repeated a number of times depending on the repetition count of the repetition attribute.

For defaults that are described on Activities, we consider the actions of the Activity together with the actions of the Default. The simple rule to combine the default with the main description is that the result is the union of all actions, but such that initial actions being part of the Default can only occur (and by doing so triggering the execution of that default) if there are no equal initial accept events in the Activity where the default is attached to.

For defaults that are described on State Machines, we consider the default as well as the State (or Region) applying the default to be transition matrices. The simple rule to combine the default with the main description is that the result is the union of all transitions, but such that transitions triggered by a default-trigger can only appear if there are no transitions from the same state with a main-trigger equal to that default-trigger. The start transition of the default is always removed from the resulting set of transitions.

We may have hybrid defaults where a default may be applied within an Interaction, but defined as a State Machine. In such cases the default State Machine is considered equivalent to the set of traces that it can produce (or said differently, the strings that the automata may accept). We also may have hybrid defaults where a default may be applied within an Interaction or State Machine, but defined as an Activity. In such cases the default Activity is considered equivalent to the set of traces the Activity can produce (along the Petri-net like semantics of Activities).

In case a «Default» is applied to a package, the behavior of the default is applied to every test component being contained either directly or indirectly (as a descendant) in that package.

If there is no user-defined default that applies, what happens is a Semantic Variation Point. The Semantic Variation Point may have the following interpretations or other interpretations decided by the tool vendors.

- Corresponding to UML 2.0 where the reaction to an unexpected trigger (in State Machines) is that the event is ignored if there is no matching trigger on a transition.
- The event can be deferred.
- The test component may perform a FinishAction (see “FinishAction” on page 20).
- The activity may conclude.

Constraints

None

Notation

No additional notation for «Default» defined.

Examples

Examples of «Default» can be found in Figure B.14, Figure B.15, and Figure B.16.

7.3.2.2 DefaultApplication

Description

A default application is a dependency used to apply a default behavior to a unit of testing on a test component.

-
1. When one package with an associated default imports another package with a default, the imported default is considered more outer than that of the importing package. Likewise if one class with a default is a specialization of another with a default, the default of the specialized class is considered more inner than that of the general class.

Extensions

- Dependency (from UML::Kernel::Dependencies)

Generalizations

None

Attributes

- repetition : UnlimitedNatural [1] =*
A possibly unlimited integer value, indicating how often the behavior in the referenced default shall be invoked.
Default value is * (unlimited).

Semantics

A default application relates a default to a unit of test behavior. A unit of test behavior can be one of Package, Classifier, Behavior, InteractionFragment, State, or Region. The unit of testing must be related to a test component. Default behavior can be integrated into any situation where the test component expects a particular reaction of the SUT.

In case a default is applied to a Package, the default will be applied to each possible unit of testing of each test component either contained directly (child) or indirectly (descendant) in that package.

In case a default is applied to an InteractionFragment, the InteractionFragment must cover a lifeline representing a test component. Most likely a default is applied to a subclass of OccurrenceSpecification, representing the reception of a signal or operation call or a reply message (MessageOccurrenceSpecification) on a test component lifeline.

The repetition attribute indicates how often the default behavior will be executed, if none of the possibilities stated in the default becomes affected. 0 indicates the default will be executed once (*continue*), whereas * stands for unlimited repetition (*repeat*) of the behavior until either one of the possibilities stated in the default become affected, or the execution environment concludes the test case. It is supposed that the execution environment concludes with a Verdict::error, but not restricted to it.

Constraints

- [1] The client of a default application must be one of Package, Classifier, Behavior, InteractionFragment, State, or Region.
- [2] The multiplicity of client of a default application is restricted to [1].
- [3] The supplier of a default application must be a Behavior with «Default» applied.

Notation

The notation for a «DefaultApplication» is identical to a Comment (i.e., a rectangle with a bent corner). The text in the comment symbol has the following syntax:

default default-identifier [repetition]

If nothing is given following the default identifier, infinity is assumed.

For Interactions, the comment is attached to an intersection point between the interaction fragment and the lifeline of the test component.

For State Machines, the comment is attached to a state symbol. If the state is divided in regions, the attachment point designates on which region the default is associated.

Defaults may also be attached to class symbols.

Examples

Examples of «DefaultApplication» are found in Figure B.13 and Figure B.16.

7.3.2.3 DetermAlt

Description

The deterministic alternative is a combined fragment with interaction operator *alt* applied and stereotyped by «DetermAlt». The interaction operands of a deterministic alternative are evaluated in exactly the same order as they appear in the model (respectively diagram) and regardless of the fact that the guard for more than one operand may be true.

Extensions

- CombinedFragment (from UML::Interactions::Fragments)

Generalization

None

Attributes

None

Semantics

Only one lifeline, representing a test component is allowed to participate in a deterministic alternative, i.e., no other test component lifeline is covered by the underlying combined fragment.

If a deterministic alternative is reached during the execution of an interaction, the involved test component waits until it receives an input. After an input is received, the evaluation of the deterministic alternative is carried out. The evaluation mechanism of the guards of a deterministic alternative restricts the ordinary evaluation mechanism of combined fragments in UML in a way that guards only allowed to references values either local to the test component lifeline or global to the entire enclosing interaction. Furthermore, the evaluation of the entering condition for an interaction operand will be carried out in a two-step-process during runtime:

1. **Guard evaluation:** The first step will evaluate the guard condition. If it fails, the entire operand will be excluded for further investigation and not entered. If the guard condition evaluates to true, an additional evaluation step succeeds.
2. **Occurrence specification evaluation:** After a successful guard evaluation, the very first occurrence specification on the test component lifeline within the interaction operand, which is supposed to be entered, will be checked. This may include a check whether a particular timer has expired, or whether a particular message is received from another lifeline, which must also participate in the deterministic alternative.
 - If it represents a check for a time out event, and the referenced timer has not expired yet, the interaction operand will not be entered.
 - If it represents a message originating from another lifeline, the interaction operand will only be entered if the expected message matches the actual message during runtime.

An expected message matches with an actual message, if all the messages arguments are equal to the expected message arguments. Wildcards may be used allowing message arguments optionally to be provided. If the occurrence specification evaluation is also fulfilled, the interaction operand will be entered. Otherwise, the interaction operand will be skipped and the evaluation of the next interaction operand (if present) starts immediately.

It is neither specified when the test case will be concluded by the execution environment nor what test case verdict will be delivered if none of the interaction operands are allowed to be entered.

Textually in prefix notation the definition is as follows:

$$\mathbf{determAlt}([\text{guard1}]op1) = \mathbf{alt}([\text{guard1}]op1)$$
$$\mathbf{determAlt}([\text{guard1}]op1, [\text{guard2}]op2) = \mathbf{alt}([\text{guard1}]op1, [\mathbf{else}] \mathbf{determAlt}([\text{guard2}]op2))$$

In general

$$\mathbf{determAlt}([\text{guard1}]op1, [\text{guard2}]op2, \dots, [\text{guardn}]opn) =$$
$$\mathbf{alt}([\text{guard1}]op1, [\mathbf{else}] \mathbf{determAlt}([\text{guard2}]op2, \dots, [\text{guardn}]opn))$$

Constraints

- [1] The interaction operator of the deterministic alternative must be of `InteractionOperatorKind::alt`.
- [2] There must be at most one lifeline, representing a classifier stereotyped by `«TestComponent»`, being covered by a deterministic alternative.
- [3] The guards of a deterministic alternative must contain only references to values local to the lifeline, representing a classifier, stereotyped by `«TestComponent»`, or values global to the whole Interaction.

Notation

One possible notation is to reuse the ordinary visualization of combined fragment, but with ‘`determAlt`’ depicted in the upper left cornered rectangle of the `CombinedFragment` frame.

Another possibility is to put the stereotype (`«DetermAlt»`) on top or beside the combined fragment.

Another valid visualization is to show a comment-like symbol with text `«DetermAlt»` and attach it with the combined fragment frame.

Examples

An example of `«DetermAlt»` can be found in Figure B.14.

7.3.2.4 FinishAction

Description

A finish action is an action that completes the test case for one test component immediately. The action has no implicit effect on other test components involved in the same test case, but it has recognized the need for other test components to be notified of the finish such that they may no longer expect messages from the finished test component. This must be specified explicitly.

Extensions

- `OpaqueAction` (from `UML::Actions::BasicActions`)
- `InvocationAction` (from `UML::Actions::BasicActions`)

Generalizations

None

Attributes

None

Semantics

A finish action moves a test component to a state where it awaits the conclusion of the test case that is now running. This may mean waiting for other test components to finish their behavior corresponding to that test case. In the traces of the test behavior for that test case, there will be no event occurrences on a test component after it was finished. Consequently, the local verdict of a finished test component cannot be altered.

- If the finish action is used within an Interaction, the test component to be finished is determined by the lifeline, representing a test component, which is covered by the ActionExecutionSpecification pointing to the finish action.
- If the finish action is used within an Activity and if there is at least one test component defined in the test configuration, then there must be a target input pin owned by the finish action. The target input pin is typed by the classifier of the test component. It represents the test component to be finished. The multiplicity of the target input pin must be 1.

Extending InvocationAction allows the invocation of a particular behavioral description on the finished test component, which is called when the test component is finished.

Constraints

- [1] If «FinishAction» is applied to an OpaqueAction and if it is used within an activity, there is exactly one input pin with name target. Its type must be a StructuredClassifier with «TestComponent» applied, and its multiplicity must be set to 1.
- [2] If «FinishAction» is applied to an InvocationAction, the multiplicity of the target input pin must be 1.

Notation

In Interaction diagrams, the «FinishAction» is shown as a black rectangle on the lifeline.

In StateMachine diagrams, the «FinishAction» is shown as a flow branch ending in a black quadrat.

In Activity diagrams, the «FinishAction» is shown as a black quadrat.

Examples

An example of «FinishAction» can be found in Figure B.14.

7.3.2.5 LogAction

Description

A log action is used to log entities during execution for further analysis. The logged entities can be simple strings, complete diagrams, instance values, or any other entity of interest.

Extensions

- SendObjectAction (from UML::Actions::IntermediateActions)

Generalizations

None

Attributes

None

Semantics

The target of a log action either refers implicitly to a logging facility in the run-time system, or explicitly to an element within the model acting as the receiver of the information to be logged. In the first case, the logging can be seen as a declaration of what should be logged rather than saying how or where the information is finally stored.

The request input pin of the underlying `SendObjectAction` determines what information shall be logged. The type of the request input pin is not determined and may represent simple strings, instance values, or any other information values of interest.

A log action must submit either one single information value or a set of information (at least one), which are supposed to be logged all at once. This is a shortcut for invoking the log action multiple times in a row.

The receiver of the log action is optional. Per default, omitting the receiver object means the execution environment is responsible to log the values transferred by the log action.

Constraints

- [1] The multiplicity of the target input pin of a «LogAction» is set to 0..1.
- [2] The multiplicity of the request input pin of a «LogAction» is set to 1..*.
- [3] There must be no further argument input pins attached to a «LogAction».

Notation

No additional notation for «LogAction» defined.

Examples

None

7.3.2.6 TestCase

Description

A test case is a behavioral feature or behavior specifying tests. A test case specifies how a set of test components interact with an SUT to realize a test objective to return a verdict value.

Test cases are owned by test contexts, and has therefore access to all features of the test context (e.g., the SUT and test components of the composite structure).

A test case always returns a verdict. The verdict may be arbitrated — calculated by the arbiter, or non-arbitrated (i.e., provided by the test behavior).

Extensions

- Behavior (from UML::CommonBehaviors::BasicBehaviors)
- Operation (from UML::Kernel,Interfaces)

Generalizations

None

Attributes

None

Semantics

The semantics of test cases are given by the semantics of the (test) behavior that realizes it.

Constraints

- [1] The type of the return result parameter of a test case must be Verdict.
- [2] «TestCase» cannot be applied both to a behavior and its specification.
- [3] If «TestCase» is applied to an operation, the featuring classifier must have «TestContext» applied.
- [4] If «TestCase» is applied to a behavior, the context of the behavior must have «TestContext» applied.

Notation

No additional notation for «TestCase» defined.

Examples

Examples of «TestCase» can be found in Figure B.5, Figure B.13, and Figure B.25.

7.3.2.7 TestLog

Description

A test log represents the behavior resulting from the execution of a test case or a test context. Also, it helps to understand potential actions and validations performed by the test context behavior that might impact the test case verdict. A test case or a test context may have any number of test logs.

Extensions

- Behavior (from UML::CommonBehaviors::BasicBehaviors)

Generalizations

None

Attributes

None

Semantics

A test log is a fixed (immutable) behavioral description resulting from the execution of a test case. It represents the any event of interest being executed during the test case execution. A test log is associated with a verdict representing the adherence of the SUT to the test objective of the associated test case.

Each test log is either related to a test case or a test context (via test log application) representing the logged information of the execution of these elements.

It is neither defined what information will be logged, nor the granularity of logged events. An execution tool vendor may decide to just log validation actions and log actions, while another execution tool also incorporates the creation and/or termination of test components into the log. The granularity of the information that shall be logged is not predefined.

Constraints

None

Notation

No additional notation for «TestLog» defined.

Examples

None

7.3.2.8 TestLogApplication

Description

A dependency to a test case or a test context.

Extensions

- Dependency (from UML::Kernel::Dependencies)

Generalizations

None

Attributes

None

Semantics

A test log application binds a concrete test log to the element, whose execution is described by the bounded test log. The number of targets for a test log is restricted to one, meaning a test log refers at any point in time to either a test case or test context. The multiplicity of the client and supplier properties of the underlying Dependency is restricted to 1.

Constraints

- [1] The client of a test log application must be a named element with «TestLog» applied.
- [2] The supplier of a test log application must be a named element with «TestCase» or «TestContext» applied.

Notation

The notation for a «TestLogApplication» is identical to a comment (i.e., a rectangle with a bent corner) with the keyword **testlog**.

Examples

See the example in Figure 7.7. *ATMSuite_log* is a test log of the test context *ATMSuite*. *invalidPIN_log* is a test log of the test case *invalidPIN*.

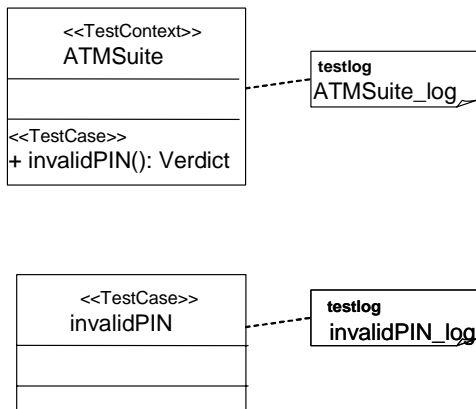


Figure 7.7 - Example on Test Log

7.3.2.9 TestObjective

Description

A dependency used to specify the objectives of a test case or test context. A test case or test context can have any number of objectives and an objective can be realized by any number of test cases or test contexts.

Extensions

- Dependency (from UML::Kernel::Dependencies)

Generalizations

None

Attributes

None

Semantics

A test objective is a reason or purpose for designing and execution a test case [ISTQB]. The underlying Dependency points from a test case or test context to anything that may represent such a reason or purpose. This includes (but is not restricted to) use cases, comments, or even elements from different profiles, like requirements from [SysML].

Constraints

[1] The client of a test objective must be a named element with «TestCase» or «TestContext» applied.

Notation

A «TestObjective» is shown using a dashed line with a stick arrowhead pointing from a test case or test context to the element(s) that represents the objective. The keyword «objective» is shown near the dashed line.

Examples

The test objective in Figure 7.8 specifies that the objective of the ValidWithdrawal test case is WithdrawMoney use case.

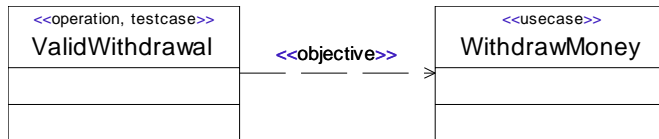


Figure 7.8 - Test objective

7.3.2.10 ValidationAction

Description

Validation actions are used to set verdicts in test behaviors by calling the *setVerdict* operation from the arbiter interface.

Extensions

- Dependency (from UML::Actions::BasicActions)

Generalizations

None

Attributes

None

Semantics

A validation action calls the *setVerdict* operation on the arbiter of the test context.

Constraints

[1] The operation of the action must be the *setVerdict* operation from the arbiter interface.

[2] The target of the action must refer to a classifier realizing the arbiter interface.

[3] The argument of the action must be an expression evaluating to a Verdict literal.

[4] Validation actions can only be used in test cases (i.e., a behavior where «TestCase» is applied to the behavior or its specification).

Notation

No additional notation for «ValidationAction» defined.

If the arbiter is depicted explicitly, a message may be shown describing the communication between the test component performing the validation action, and the arbiter.

Examples

In Figure 7.9 two examples of «ValidationAction» are shown. The left most one contains the pass literal and will always set the verdict to pass. The right most one contains an expression, and will set the verdict to pass if x is greater than 10 and fail otherwise.



Figure 7.9 - Validation actions

7.3.2.11 Verdict (a predefined enumeration)

Description

A verdict is a predefined enumeration specifying the set of possible evaluations of a test case. Five enumeration literals are defined:

1. **none** - The test case has not been executed yet.
2. **pass** - The system under test adheres to the expectations.
3. **inconclusive** - The evaluation cannot be evaluated to be pass or fail.
4. **fail** - The system under test differs from the expectation.
5. **error** - An error has occurred within the testing environment.

The Verdict type may be extended by the users with more literals.

Semantics

The verdict is a predefined enumeration datatype that contains at least the values fail, inconclusive, pass, error indicating how this test case execution has performed.

When a test case is not executed yet or just invoked, its verdict is **none**. **None** indicates that no communication between test components and the SUT has been carried out yet. **None** is the weakest verdict. It is never set by the tester directly. A **pass** indicates that the test case is successful and that the SUT has behaved according to what should be expected. A **fail** on the other hand shows that the SUT is not behaving according to the specification. An **inconclusive** means that the test execution cannot determine whether the SUT performs well or not. An **error** tells that the test system itself and not the SUT fails.

The precedence rules for the predefined literals are: **none** < **pass** < **inconclusive** < **fail** < **error**. This means whenever a test component submits a local verdict fail, the final test case verdict will never result with a **pass**, nor **inconclusive**.

The final verdict of a test case is determined by an arbiter.

Constraints

None

Notation

The predefined literals **none**, **pass**, **inconclusive**, **fail**, and **error** are shown as keywords (normally in bold face).

Examples

None

7.4 Test Data

This sub clause contains concepts additional to UML data concepts needed to describe test data. It covers wildcards for a flexible specification of test data, data pools, data partitions, data selection, and coding rules for the specification of test data transmission.

Wildcards

Wildcards are literals and denote an omitted value, any value, or any value or omit. These literals can be used wherever value specifications can be used. They are typically used for a loose specification of data to be expected from the SUT or provided to the SUT.

UML 2.3 provides LiteralNull, which is used by the UML Testing Profile for the representation of omitted values. Wildcards for any value («LiteralAny») and any value or omit («LiteralAnyOrNull») are extensions to UML 2.3.

7.4.1 Abstract Syntax

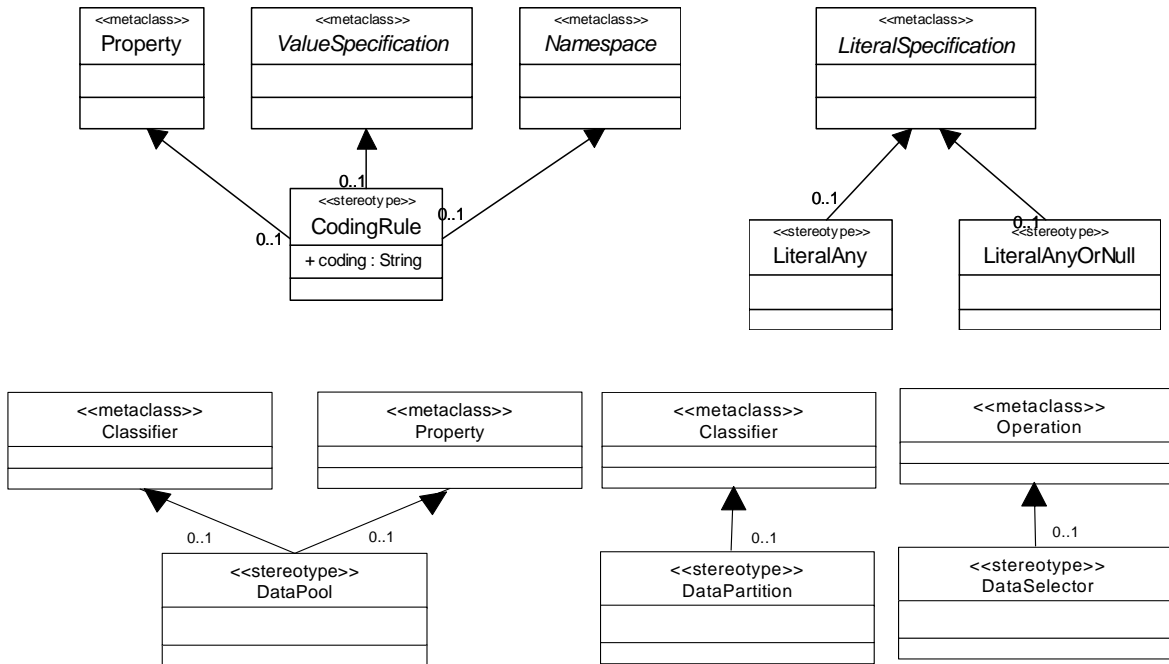


Figure 7.10 - Test data

7.4.2 Stereotype Descriptions

7.4.2.1 CodingRule

Description

A coding rule specifies how values are encoded and/or decoded. Coding rules are defined outside the UML Testing Profile and referred to within the UML Testing Profile specifications. Referring to such coding rules allows the specification of both valid and invalid codings. A simple string is used to refer to a coding scheme(s); for example, “PER” (Packed Encoded Rules).

Extensions

- Property (from UML::CompositeStructures::InternalStructures)
- ValueSpecification (from UML::Kernel)
- Namespace (from UML::Kernel)

Generalizations

None

Attributes

- coding : String [1]
A string defining the selected coding scheme.

Semantics

If a coding rule is applied to a value specification, it specifies how the value(s) are coded. If it is applied to a namespace, it specifies the coding for all values contained within the namespace. If it is applied to a property, it specifies how the values of this property are encoded. If coding rules are applied to several places in a hierarchy, rules defined at a lower level have precedence over rules defined at a higher level.

Notation

The notation for a «CodingRule» is identical to a comment in UML (i.e., a rectangle with a bent corner). The text in the comment symbol begins with the keyword **coding** followed by the string defining the coding scheme. A dashed line is used to connect the comment symbol to the namespace, property, and value specification.

Examples

A «CodingRule» example is given in Figure B.10.

7.4.2.2 DataPool

Description

A data pool specifies a container for explicit values or data partitions that are used by test contexts or test cases. A data pool provides an explicit means for associating data values for repeated tests (e.g., values from a database, etc.) and equivalence classes that can be used to define abstract data sets for test evaluation.

Extensions

- Classifier (from UML::Kernel, Dependencies, PowerTypes)
- Property (from UML::CompositeStructures::InternalStructures)

Generalizations

None

Attributes

None

Semantics

Test cases are often executed repeatedly with different data values to stimulate the SUT in various ways. Also when observing data, abstract equivalence classes are used to define sets of allowable values. Typically these values are taken from data partitions, or lists of explicit values. For this purpose a data pool provides a means for associating data sets with test contexts and test cases. A data pool is a classifier containing either data partitions (equivalence classes), or explicit values; and can only be associated with either a test context or test components.

Constraints

- [1] A classifier with «DataPool» applied can only be referenced by a test context or test component.
- [2] A property with «DataPool» applied can only be applied to a property associated connected with a test component within the context of a classifier with «TestContext» applied.
- [3] A classifier with «DataPool» applied cannot be associated with both a test context and a test component.

Notation

No additional notation for «DataPool» applied.

Examples

A «DataPool» example is given in Figure B.23.

7.4.2.3 DataPartition

Description

A data partition specifies a container for a set of values. These data sets are used as abstract equivalence classes during test context and test case evaluation.

Extensions

- Classifier (from UML::Kernel, Dependencies, PowerTypes)

Generalizations

None

Attributes

None

Semantics

A data partition is used to define an equivalence class for a given type (e.g., “ValidUserNames” etc.). By denoting the partitioning of data explicitly we provide a more visible differentiation of data. A data partition is a stereotyped classifier that must be associated with a data pool.

Constraints

[1] A classifier with «DataPartition» applied can only be associated with a data pool or another data partition.

Notation

No additional notation for «DataPartition» defined.

Examples

A data partition example is given in Figure B.23.

7.4.2.4 DataSelector

Description

A data selector allows the implementation of different data selection strategies.

Extensions

- Operation (from UML::Kernel, Interfaces)

Generalizations

None

Attributes

None

Semantics

To facilitate the different data selection strategies and data checking one or more data selectors can be associated with either a data pool or data partition. Typically, these data selectors are operations that operate over the contained values or value sets.

Constraints

[1] If «DataSelector» is applied to an operation, the featuring classifier must have either «DataPool» or «DataPartition» applied.

Notation

No additional notation for «DataSelector» defined.

Examples

A «DataSelector» example is given in Figure B.23.

7.4.2.5 LiteralAny

Description

Literal any is a wildcard specification representing any value out of a set of possible values.

Extensions

- LiteralSpecification (from UML::Kernel)

Generalizations

None

Attributes

None

Semantics

If a literal any is used as a literal specification, it denotes any possible value out of a set of possible values. If it is used (e.g., for the reception of a message in an interaction), it specifies that the specified message with any value at the place of the literal any is to be received. If it is used (e.g., for the sending of a message in an interaction), it specifies that this message with a selected value at the place of the literal any is to be sent. The selection of this value can be done along different selection schemes such as default values or random values.

Constraints

None

Notation

The notation for «LiteralAny» is the question mark character, ‘?’.

Examples

None

7.4.2.6 LiteralAnyOrNull

Description

Literal any or null is a wildcard specification representing any value out of a set of possible values, or the lack of a value.

Extensions

- LiteralSpecification (from UML::Kernel)

Generalizations

None

Attributes

None

Semantics

If a literal any or null is used as a literal specification, it denotes any possible value out of a set of possible values or the lack of the value. If it is used (e.g., for the reception of a message in an interaction), it specifies that the specified message with any value at the place of the literal any or null or without that value is to be received. If it is used (e.g., for the sending of a message in an interaction), it specifies that this message with a selected value or without a value at the place of the literal any or null is to be sent. The selection of this value or the selection of the absence can be done along different selection schemes such as default values or random values.

Notation

The notation for «LiteralAnyOrNull» is the star character, '*'.

Examples

None

7.5 Timing Concepts

When specifying tests, time concepts are essential to provide complete and precise specifications. The simple time concepts of UML do not cover the full needs for test specification, and therefore the UML Testing Profile provides a small set of useful time concepts.

7.5.1 Abstract Syntax

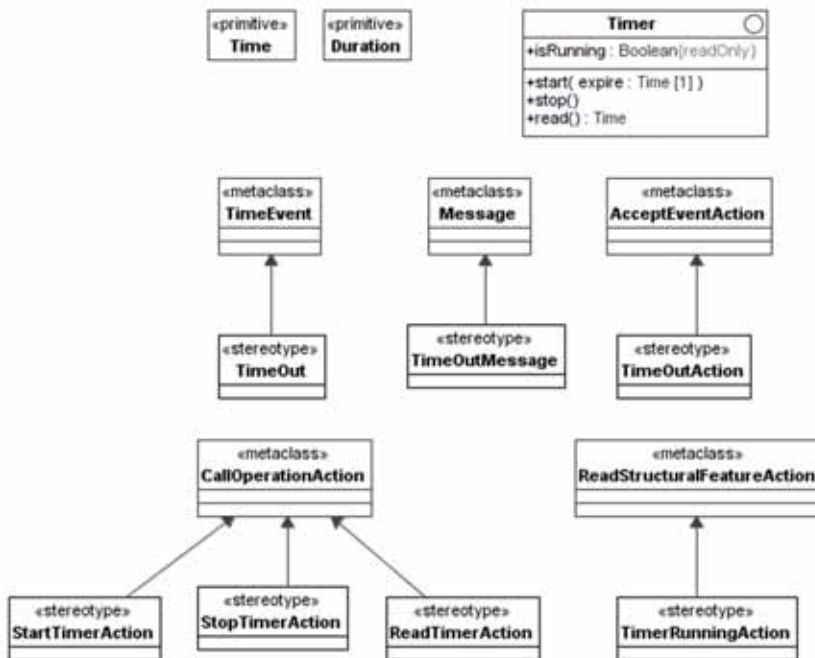


Figure 7.11 Timer Concepts

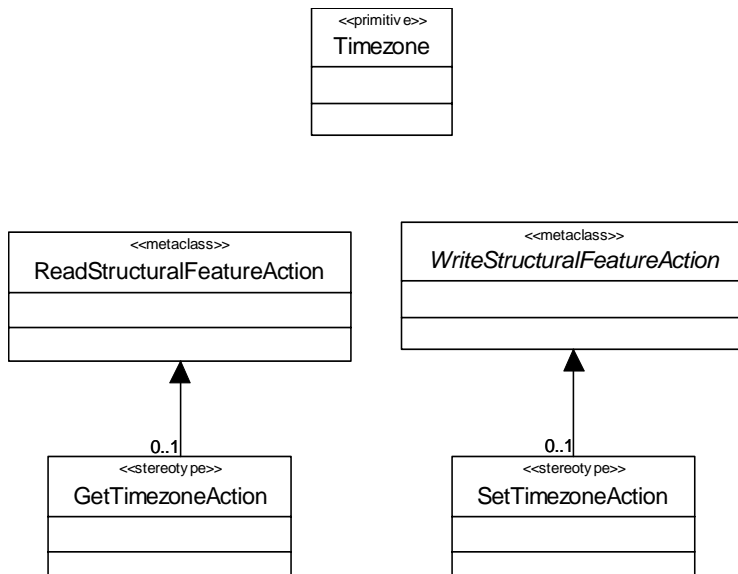


Figure 7.12 - Timezone concepts

7.5.2 Stereotype Descriptions

7.5.2.1 GetTimezoneAction

Description

An action to dynamically retrieve the current timezone of a test component.

Extensions

- ReadStructuralFeatureAction (from UML::Actions::IntermediateActions)

Generalizations

None

Attributes

None

Semantics

The get timezone action can be invoked at run-time by a test component to retrieve its current time zone. The result is a Timezone value.

Constraints

- [1] The type of the structural feature of the action must be Timezone.
- [2] The type of the result must be Timezone.

Notation

No additional notation for «GetTimezoneAction» defined.

Examples

None

7.5.2.2 SetTimezoneAction

Description

An action to dynamically set the timezone of a test component.

Extensions

- WriteStructuralFeatureAction (from UML::Actions::IntermediateActions)

Generalizations

None

Attributes

None

Semantics

The set timezone action can be invoked at run-time by a test component to set its current time zone. The value of a set timezone action refers to a Timezone value.

Constraints

[1] The type of the structural feature of the action must be Timezone.

[2] The value must be a Timezone value.

Notation

No additional notation for «SetTimezoneAction» defined.

Examples

None

7.5.2.3 Duration (a predefined type)

Description

Duration is a predefined primitive type used to specify a duration. Durations are used in time constraints and together with time values. Adding or subtracting a duration to a time value results in a time value. Adding or subtracting two durations results in a duration.

7.5.2.4 ReadTimerAction

Description

An action used to read a timer to obtain the expiration time of a timer.

Extensions

- CallOperationAction (from UML::Actions::BasicActions)

Generalizations

None

Attributes

None

Semantics

| The read timer action reads the expiration time of a timer. The read timer action returns null for timers that are not running.

Constraints

[1] The operation of the action must be the read operation from the Timer interface.

[2] The target of the action must refer to a classifier realizing the Timer interface.

[3] The type of the result must be Time.

Notation

| No additional notation for «ReadTimerAction» defined.

Examples

None

7.5.2.5 StartTimerAction

Description

An action used to start a timer.

Extensions

- CallOperationAction (from UML::Actions::BasicActions)

Generalizations

None

Attributes

None

Semantics

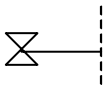
The start timer action starts a timer. The start timer action on a running timer restarts the timer.

Constraints

- [1] The operation of the action must be the start operation of the Timer interface.
- [2] The target of the action must refer to a classifier realizing the Timer interface.
- [3] The argument of the action must be a Time value.

Notation

The notation for a «StartTimerAction» is an empty hourglass. A thin line connects the hourglass and the line where the timer is started.



Examples

A «StartTimerAction» example can be found in Figure B.11.

7.5.2.6 StopTimerAction

Description

An action used to stop a timer. Stops the timer if it is currently running, does nothing otherwise.

Extensions

- CallOperationAction (from UML::Actions::BasicActions)

Generalizations

None

Attributes

None

Semantics

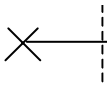
The stop timer action stops a running timer. The stop timer action on a timer that is not running has no effect.

Constraints

- [1] The operation of the action must be the stop operation of the Timer interface.
- [2] The target of the action must refer to a classifier realizing the Timer interface.

Notation

The notation for a «StopTimerAction» is a cross. A thin line connects the cross and the line where the timer is stopped.



Examples

A «StopTimerAction» example can be found in Figure B.11.

7.5.2.7 Time (a predefined type)

Description

Time is a predefined primitive type used to specify concrete time values. Time values are used to express time constraints and to set timers. A predefined keyword 'now' may be used to represent the current time in a system. How this value is obtained is not specified. The difference between two Time values is a Duration.

7.5.2.8 TimeOut

Description

A timeout event represents the timeout mechanism for usage in StateMachines.

Extensions

- TimeEvent (from UML::CommonBehaviors::SimpleTime)

Generalizations

None

Attributes

None

Semantics

A timeout is generated by a timer when it expires and may trigger an associated behavior. The timeout event is placed in the input pool of the object owning the timer.

Constraints

None

Notation

The notation for a «TimeOut» reuses the notation for TimeEvent.

Examples

None

7.5.2.9 TimeOutMessage

Description

A timeout message represents the timeout mechanism for usage in Interactions.

Extensions

- Message (from UML::Interactions::BasicInteractions)

Generalizations

None

Attributes

None

Semantics

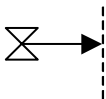
A timeout message is generated by a timer when it expires. The timeout message is sent to the active class that owns the timer.

Constraints

None

Notation

The notation for the «TimeOutMessage» is an empty hourglass. An arrow with a filled head connects the hourglass and the line where the timeout occurs.



Examples

A «TimeOutMessage» example can be found in Figure B.11.

7.5.2.10 TimeOutAction

Description

A timeout action represents the timeout mechanism for usage in Activities.

Extensions

- AcceptEventAction (from UML::Actions::CompleteActions)

Generalizations

None

Attributes

None

Semantics

A timeout is enabled when the timer expires. It may trigger an associated activity. The timeout action occurs, when all input conditions for that activity are satisfied (including the timeout action).

Constraints

None

Notation

The notation for the «TimeOutAction» is an empty hourglass (it reuses the syntax for the accept time event action in activities). An arrow with an unfilled head connects the hourglass and the activity to which the timeout is an input condition.



Examples

None

7.5.2.11 Timer (a predefined interface)

Description

A predefined interface specifying features needed to specify a timer. A timeout is generated automatically when a timer expires and is sent to the timer owner.

Generalizations

None

Attributes

- `isRunning` : Boolean [1]
Returns true if the timer is currently active, false otherwise. `isRunning` is a read only property.

Operations

- `start(expires : Time)`
Starts the timer and sets the time of expiration.
- `stop()`
Stops the timer.
- `read() : Time`
Reads the expiration time of the timer.

Semantics

A timer is owned by an active class, commonly participating in test cases, and is started with a predefined time of expiration. A timer can either be private or public. If private, the time can only be accessed by its owning active class. If public, anyone with sufficient visibility may access and manipulate the timer. When a timer expires after its predefined time, a timeout is generated automatically. It is sent immediately to the active class that owns the timer. What timeout representation is used for the timeout depends on the behavioral description in that the timeout is supposed to occur.

Timers can be started, stopped, and checked by a start timer action (calling `start()`), a stop timer action (calling `stop()`), a timer running action (reading property `isRunning`), and a read timer action (calling `read()`). By means of the `start()` operation, a timer may be started with a certain time value. The predefined time value of a timer is always positive. For example, “start Timer1(now+2.0)” means to start a timer and to stop it at latest in 2 time units, otherwise it expires. With the `stop()` operation, an active timer can be stopped. The expiration time of an active timer can be retrieved by the `read()` operation.

The timer attribute `isRunning` is a boolean value and indicates whether the timer is still active or not.

Constraints

[1] Only active classes may own properties realizing the timer interface.

[2] Timer may only be started with positive expiration time.

Notation

A timer has no specific notation; however, the timer actions used to access the features of the timer do have specific notation. For details, look in the sub clauses for «StartTimerAction», «StopTimerAction», and «ReadTimerAction».

Examples

An example for a timer definition can be found in Figure B.9.

7.5.2.12 Timezone (a predefined type)

Description

Timezone is a predefined primitive type representing a timezone. Timezones are used to group test components together. Test components belonging to the same timezone (i.e., having the same value on the zone attribute) are synchronized and can share time values.

Semantics

Timezones are used to group test components together. Test components with the same timezone value constitute a group and are considered to be synchronized. The semantics of synchronization is not specified. Timezone values can be compared for equality.

Comparing time-critical events within the same timezone is allowed. Comparing time-critical events of different timezones is a matter of semantic variation point and should be decided by the tool vendor. By default, comparison between events in two different timezones is illegal.

Semantic Variation Point

The comparison of time-critical events from different timezones are illegal by default.

7.5.2.13 TimerRunningAction

Description

An action used to check if a timer is currently running or not.

Extensions

- ReadStructuralFeatureAction (from UML::Actions::IntermediateActions)

Generalizations

None

Attributes

None

Semantics

The timer running action checks the running status of a timer. Returns a boolean value, true if the timer is running, false otherwise.

Constraints

- [1] The structural feature of the action must be the isRunning attribute of the Timer interface.
- [2] The type of the result must be Boolean.
- [3] The target of the action must refer to a classifier realizing the Timer interface.

Notation

No additional notation for «TimerRunningAction» defined.

Examples

None

Annex A - Mappings

(normative)

A.1 Mapping to JUnit

JUnit is an open source regression testing framework written by Erich Gamma and Kent Beck (see www.junit.org). It has been made popular by the eXtreme Programming community and is widely used by developers who implement unit tests in Java. Over the past few years, it has become the de-facto standard for unit testing. JUnit has been translated to a variety of programming languages. Furthermore JUnit has been extended in various ways to support data driven testing, stubbing, etc.

This annex provides a mapping from the UML Testing Profile to JUnit. This mapping considers primarily the JUnit framework: When no trivial mapping exists to the JUnit framework, existing extensions to the framework are mentioned as examples of how the framework has been extended to support some of the concepts included in the UML Testing Profile.

The following diagram gives an overview of the JUnit framework:

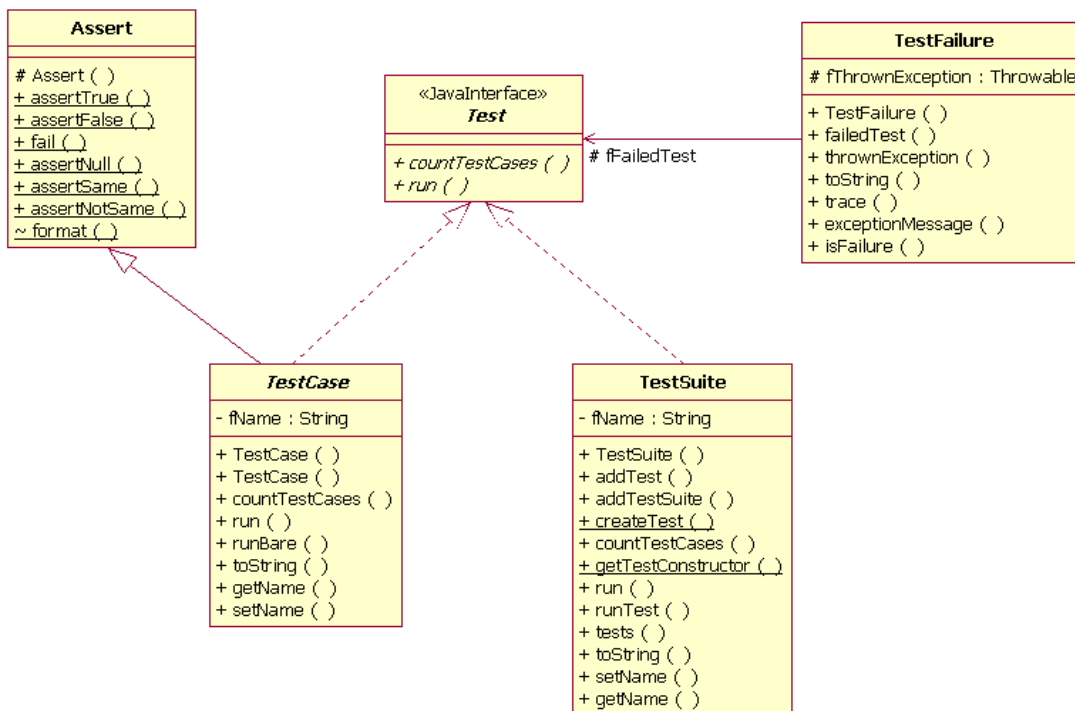


Figure A.1 - JUnit framework overview

When you create a test with JUnit, you generally go through the following steps:

1. Create a subclass of `TestCase`: The `TestCase` fixture.

2. Create a constructor that accepts a String as a parameter and passes it to the superclass.
3. Add an instance variable for each part of the TestCase fixture.
4. Override setUp() to initialize the variables.
5. Override tearDown() to release any permanent resources allocated in setUp.
6. Implement a test method with a name starting with the “test” string, and using assert methods.
7. Implement a “runTest” method to define the logic to run the different tests.

The following source code presents an example of a JUnit TestCase fixture.

```
public class MoneyTest extends TestCase {
    private Money f12CHF;
    private Money f24CHF;

    protected void setUp() {
        f12CHF= new Money(12, "CHF");
        f24CHF= new Money(24, "CHF");
    }

    public void testAdd() {
        Money f36CHF = f12CHF.add(f24CHF);
        assertTrue(f36CHF.equals(new Money(36, "CHF")));
    }

    public void testMultiply() {
        Money f24CHFa = f12CHF.multiply(new Money(2, "CHF"));
        assertTrue(f24CHFa.equals(f24CHF));
    }

    protected void runTest throws Throwable() {
        testAdd();
        testMultiply();
    }
}
```

Table A.1 gives a mapping between the UML Testing Profile concepts and the JUnit concepts. Because of overlapping terminology JUnit is systematically used to prefix a term whenever appropriate.

Table A.1 - Comparison between the UML Testing Profile and JUnit concepts

| UML Testing Profile | JUnit |
|---------------------------|--|
| Test Behavior: | |
| Test Control | A Test Control is realized by overloading the “runTest” operation of the JUnit TestCase fixture. It specifies the sequence in which several Test Cases have to be run. |
| Test Case | A Test Case is realized in JUnit as an operation. This operation belongs to the Test Context class, realized in JUnit as class inheriting from the JUnit TestCase class. The convention is that the name of this operation should start with the “test” string, and have no arguments so that the JUnit test runner can execute all the tests of the test context without requiring a Test Control. |
| Test Invocation | A Test Case is an operation that can be invoked from another Test Case operation or from the Test Control. |
| Test Objective | This concept can be realized in JUnit using a call to the “setName” operation of the testing framework. |
| Stimulus | There is no such concept. Stimuli are not formalized in JUnit tests. They are directly part of the Test Cases implementations (body of the test methods). |
| Observation | There is no such concept. Observations are not formalized in JUnit tests. They are directly part of the Test Case implementations (body of the test methods). |
| Coordination | A coordination can be realized using any available synchronization mechanism available to the Test Components such as semaphores. |
| Default | Defaults are not supported by JUnit. One needs to implement Defaults directly by adding complexity in the behavior of the Test Case. Java’s exception mechanism can be used to realize the default hierarchy of the UML Testing Profile. |
| Verdict | In JUnit, predefined verdict values are <i>pass</i> , <i>fail</i> , and <i>error</i> . <i>Pass</i> indicates that the test behavior gives evidence for correctness of the SUT for that specific Test Case. <i>Fail</i> describes that the purpose of the Test Case has been violated. An <i>Error</i> verdict shall be used to indicate errors (exceptions) within the test system itself. There is no such thing as an <i>Inconclusive</i> verdict in JUnit. Therefore, the <i>Inconclusive</i> verdict will be generally mapped into <i>Fail</i> . |
| Validation Action | A Validation Action can be mapped to calls to the JUnit Assert library. |
| Log Action | There is no general purpose logging mechanism offered by the JUnit framework. |
| Test Log | There is no formal log provided by the JUnit framework. |
| Test Architecture: | |
| Test Context | A test context is realized in JUnit as a class inheriting from the JUnit TestCase class. To be noticed that the concept of Test Context exists in the JUnit framework but is different from the one defined in the UML Testing Profile. |

Table A.1 - Comparison between the UML Testing Profile and JUnit concepts

| UML Testing Profile | JUnit |
|----------------------------|--|
| Test Configuration | There is no such notion in JUnit. Generally speaking, there is rarely Test Components used in JUnit. The Test Behavior is most of the time implemented by the Test Context classifier. |
| Test Component | There is no Test Components per se in JUnit. Extensions to JUnit such as Mock Objects support specific forms of Test Components aimed at replacing existing classes. Nevertheless those components do not include the ability to return a verdict. |
| System Under Test (SUT) | The system under test doesn't need to be identified explicitly in JUnit. Any class in the classpath can be considered as a utility class or an SUT class. |
| Arbiter | The arbiter can be realized as a property of Test Context of a type TestResult. There is a default arbitration algorithm that generates <i>Pass</i> , <i>Fail</i> , and <i>Error</i> as verdict, where these verdicts are ordered as <i>Pass</i> < <i>Fail</i> < <i>Error</i> . The arbitration algorithm can be user-defined. |
| Utility Part | Any class available in the Java classpath can be considered as a utility class or an SUT part. |
| Test Data: | |
| Wildcards | There is no direct mapping to the JUnit framework. One could use pre-defined libraries to do such comparisons. |
| Data pool | A class together with operations to get access to the data pool. |
| Data partition | A class (inheriting from a data pool) together with operations to get access to the data partition. |
| Data selector | An operation of a data pool or a data partition. |
| Coding rules | There is no direct mapping to the JUnit framework. One could use pre-defined libraries to do such comparisons. |
| Time Concepts: | |
| Timezone | The time concepts are not supported by JUnit, but might be realized using standard APIs available to manipulate time. |
| Timer | |
| Test Deployment: | |
| Test artifact | Deployment is outside the scope of JUnit. |
| Test node | |

Following is an example mapping the test of the Money class described in the previous sub clause - for the Test Cases given in Figure B.5 and Figure B.6.

```
public class MoneyTest extends TestCase {

    public void addSameMoney() {
        Money money1 = new Money(20, "USD");
    }
}
```



```

        Money money2 = new Money(50, "USD");
        money1.add(money2);
        assertTrue(money1.equals(new Money(70, "USD")));
    }

    public void addDifferentMoney() {
        Money money1 = new Money(20, "USD");
        Money money2 = new Money(50, "USD");
        Money bag1 = money1.add(money2);
        assertTrue(bag1.contains(money1));
        assertTrue(bag1.contains(money2));
    }

    protected void runTest throws Throwable() {
        addSameMoney();
        addDifferentMoney();
    }
}

```

A.2 Mapping to TTCN-3

TTCN-3 - Testing and Test Control Notation (3rd edition) - is widely accepted as a standard for test system development in the telecommunication and data communication area. TTCN-3 comprises concepts suitable to all types of distributed system testing.

TTCN-3 is a test specification and implementation language to define test procedures for black-box testing of distributed systems. Stimuli are given to the system under test (SUT); its reactions are observed and compared with the expected ones. Based on this comparison, the subsequent test behavior is determined or the test verdict is assigned. If expected and observed responses differ, then a fault has been discovered that is indicated by a test verdict fail. A successful test is indicated by a test verdict pass.

TTCN-3 allows the description of complex distributed test behavior in terms of sequences, alternatives, loops, and parallel stimuli and responses. Stimuli and responses are exchanged at the interfaces of the system under test, which are defined as a collection of ports being either message-based for asynchronous communication or signature-based for synchronous communication. The test system can use any number of test components to perform test procedures in parallel. Likewise to the interfaces of the system under test, the interfaces of the test components are described as ports.

TTCN-3 is a modular language and has a similar look and feel to a typical programming language. In addition to the typical programming constructs, it contains all the important features necessary to specify test procedures and campaigns for functional, conformance, interoperability, load, and scalability tests like test verdicts, matching mechanisms to compare the reactions of the SUT with the expected range of values, timer handling, distributed test components, ability to specify encoding information, synchronous and asynchronous communication, and monitoring.

A TTCN-3 test specification consists of four main parts:

1. type definitions for test data structures
2. template definitions for concrete test data
3. function and test case definitions for test behavior
4. control definitions for the execution of test cases

TTCN-3 was one basis for the development of the UML Testing Profile. Still, they differ in several respects. The UML Testing Profile is targeted at UML providing selected extensions to the features of TTCN-3 as well as restricting/omitting other TTCN-3 features. A mapping from the UML Testing Profile to TTCN-3 is possible but not the other way around. The principal approach towards the mapping to TTCN-3 consists of two major steps:

1. Take the UML Testing Profile stereotypes and associations and assign them to TTCN-3 concepts.
2. Define procedures how to collect required information for the generated TTCN-3 modules.

Table A.2 compares the UML Testing Profile concepts with existing TTCN-3 testing concepts. All UML Testing Profile concepts have direct correspondence or can be mapped to TTCN-3 testing concepts.

Table A.2 - Comparison between the UML Testing Profile and TTCN-3 concepts

| UML Testing Profile | TTCN-3 |
|---------------------------|---|
| <i>Test Behavior:</i> | |
| Test Control | The control part of a TTCN-3 module. |
| Test Case | A TTCN-3 testcase. The behavior of a testcase is defined by functions that are generated via mapping functions applied to the behavioral features of a test context. The main test component (MTC) is used like a "controller" that creates test components and starts their behavior. The MTC controls also the arbiter. |
| Test Invocation | The execution of a TTCN-3 testcase. |
| Test Objective | Not part of TTCN-3, just a comment to a test case definition. |
| Stimulus | Sending messages, calling operations, and replying to operation invocations. |
| Observation | Receiving messages, operation invocations, and operation replies. |
| Coordination | Message exchange between test components. |
| Default | Altstep and activation/deactivation of the altsteps along the default hierarchy. |
| Verdict | The default arbiter and its verdict handling is an integral part of TTCN-3. For user-defined, a special verdict type and updating the arbiter with set verdicts is needed. |
| Validation Action | External function or data functions resulting in a value of the specific verdict type. |
| Log Action | Log operation. |
| Test Log | Not part of TTCN-3, but could be mapped just as a strict sequential behavioral function. |
| <i>Test Architecture:</i> | |
| Test Context | TTCN-3 module definition part covering all test cases and related definitions of a test context, having a specific TSI component type (to access the SUT) and a specific behavioral function to set up the initial test configuration for this test context. |
| Test Configuration | Configuration operations create, start, connect, disconnect, map, unmap, running and done for dynamic test configurations. Behavioral function to set up the initial test configuration. |

Table A.2 - Comparison between the UML Testing Profile and TTCN-3 concepts

| UML Testing Profile | TTCN-3 |
|-------------------------|---|
| Test Component | TTCN-3 component type ¹ , used for the creation of test components and their connection to the SUT and to other test components. |
| System Under Test (SUT) | The test system accesses the SUT via the abstract test system interfaces (TSI). The SUT interfaces result in port types used by TSI. One additional port is needed to communicate with a user-defined arbiter. Potentially additional ports are needed to coordinate/synchronize test components. |
| Arbiter | The UML Testing Profile default arbiter is a TTCN-3 built-in. User-defined arbiters are realized by the MTC. |
| Utility Part | External constants and/or external functions to refer and make use of the utility part, which is outside the TTCN-3 module. |
| <i>Test Data:</i> | |
| Wildcards | TTCN-3 matching mechanisms. |
| Data pool | An external constant (referring to the data in the data pool) or external functions to get access to the data pool. |
| Data partition | TTCN-3 matching mechanisms can be used to handle data partitions for observations. For stimuli however, user defined functions are needed to realize the test case execution with different data to be sent to the SUT. |
| Data selector | An external function to get access to the data of a data pool or data partition. |
| Coding rules | TTCN-3 encode and encode variant attributes. |
| <i>Time Concepts:</i> | |
| Timezone | Cannot be represented in TTCN-3. |
| Timer | TTCN-3 timer. |

1. Please note that due to performance aspects (for example) there might be not only a one-to-one mapping between the UML Testing Profile and TTCN-3 components. Instead, a different test configuration might be used.

In the following, an example mapping is provided for the Bank ATM case study described in the previous sub clause - for the test case **invalidPIN** given in Figure B.11.

Two TTCN-3 modules are generated: one for ATM being the SUT (and being defined in a separate UML package) and another module for the ATM test defining the tests for the Bank ATM also in a separate UML package. The module **ATM** provides all the signatures available at the SUT interfaces, which are used during testing.

```

module ATM {
  //withdraw(amount : Integer): Boolean
  signature withdraw(integer amount) return boolean;
  //isPinCorrect(c : Integer) : Boolean
  signature isPinCorrect(integer c) return boolean;
  //selectOperation(op : OpKind) : Boolean
  signature selectOperation(OpKind op) return boolean;
  ... // and so on
}

```

The module for the ATM test **ATMTest**

- imports all the definitions from the ATM module,
- defines the group for the ATM test context,
- provides within this group port and component type definitions, the function to set up the initial test configuration and finally the test cases.

To make this mapping more compelling, a user-defined arbiter is assumed in addition and the default handling is made explicit.

```
module ATMTest {
  import from ATM all;
  // utility IAccount
  type record IAccount {
    integer balance,
    charstring number
  }
  external const IAccount accounts[0..infinity];
  group ATMSuite {
    ... // all the definitions constituting the tests for ATM
  } // group ATMSuite
} // module ATMTest
```

The required and provided interfaces are reflected in corresponding port definitions **atmPort_PType** and **netCom_PType**, which are then used in the component type definitions **BankEmulator_CType** and **HWEulator_CType** to constitute the component types for the PTCs.

```
//required interfaces: IHardware
//provided interface: IATM
type port atmPort_PType procedure {
  in display_, ejectCard, ejectMoney, acceptMoney, getStatus; //IHardware
  out withdraw, isPinCorrect, selectOperation,
  storeCardData, storeSWIFtNumber; //IBank
}

//required interface: IBank
//no provided interface
type port netCom_PType procedure {
  in debitAccount, depositAccount, findAccount,
  wireMoney, checkCredentials //IBank
}
// test component type BankEmulator
type component BankEmulator_CType {
  port netCom_PType bePort;
  port Arbiter_PType arbiter; // user defined arbiter
}
// test component type HWEulator
type component HWEulator_CType {
  port atmPort_PType hwCom;
  var boolean pinOk;
```

```

    var charstring enteredPIN;
    var charstring message_;
    timer t1;
}

```

The following shows the mapping for a user-defined arbiter. A specific type **MyVerdict_Type** together with an arbitration function **Arbitration** is used to calculate the overall verdict during test case execution. The final assessment is given by mapping the user-defined verdicts to the TTCN-3 verdict at the end. This enables the use of statistical verdicts where, for example, 5% failures lead to fail but less failures to pass. The arbiter is realized by the **MTC**. It receives verdict update information via a separate port arbiter. The arbitrated verdict is stored in a local variable **mv**.

```

//the arbitration
type enumerated MyVerdict_Type {
    pass_, fail_, inconc_, none_
}
type port Arbiter_PType message {
    inout MyVerdict_Type
}
// the MTC is just a controller
type component MTC_CType {
    port Arbiter_PType arbiter; // user defined arbiter
    var MyVerdict_Type mv:= none_;
}
function Arbitration(BankEmulator_CType be, HWEEmulator_CType hwe)
runs on MTC_CType {
    while (be.running or hwe.running) {
        alt {
            [] arbiter.receive(none_) {...}
        }
    }
    if (mv == pass_) { setverdict(pass) }
    else ...
}

```

The defaults in the defaults hierarchy are mapped to several altsteps, which will be invoked later along that hierarchy. In this example, an altstep for every component type is defined (i.e., **HWEEmulator_classifierdefault** and **BankEmulator_classifierdefault**). The package level default **ATMTestDefault** does not need to be mapped - it is automatically realized by the TTCN-3 semantics.

```

altstep HWEEmulator_classifierdefault()
runs on HWEEmulator_CType {
    var charstring s;
    [] t1.timeout {arbiter.send(fail_);}
    [] hwCom.getcall(ejectCard:{}) {arbiter.send(fail_);}
    [] hwCom.getcall(display:{?}) -> param (s) {
        if (s == "Connection lost") { arbiter.send(inconc_) }
        else {arbiter.send(fail_)} }
    }
}
altstep BankEmulator_classifierdefault()

```

```

runs on BankEmulator_CType {
    //is empty
}

```

The component type for the test system interface `SUT_CType` is constituted by the ports `netCom` and `atmPort` used during testing in the specific test context. A configuration function `ATMSuite_Configuration` sets up the initial test configuration and is invoked at first by every test case of that test context.

```

// SUT
type component SUT_CType {
    port netCom_PType netCom;
    port atmPort_PType atmPort;
}
// setup the configuration
function ATMSuite_Configuration
(in SUT_CType theSUT, in MTC_CType theMTC, inout
 BankEmulator_CType be, inout HWEEmulator_CType hwe)
{
    be:=BankEmulator_CType.create;
    map(theSUT:netCom,be:bePort); //map to the SUT
    hwe:=HWEEmulator_CType.create;
    map(theSUT:atmPort,hwe:hwCom); //map to the SUT
    connect(theMTC:arbiter,be:arbiter); // arbitration
    connect(theMTC:arbiter,hwe:arbiter); // arbitration
}

```

The `invalidPIN` test case uses two PTCs `hwe` and `be` each having its own test behavior, which is defined by behavioral functions `invalidPIN_hwe` and `invalidPIN_be` as shown below.

```

function invalidPIN_hwe(integer invalidPIN) runs on HWEEmulator_CType {
    activate(HWEEmulator_classifierdefault());
    // here we need test derivation
    // just for that example straightforward definition along the lifeline
    var boolean enterPin_reply;
    hwCom.call(storeCardData:{current},nowait);
    t1.start(2.0);
    hwCom.getreply(display_:"Enter PIN");
    t1.stop;
    hwCom.call(isPinCorrect:{invalidPIN},3.0) {
    [] hwCom.getreply(isPinCorrect:{?} value false) {}
    }
    hwCom.getreply(display_:"Invalid PIN");
    hwCom.getreply(display_:"Enter PIN again");
    arbiter.send(pass_); // local verdict to the arbiter
}

function invalidPIN_be() runs on BankEmulator_CType {
    activate(BankEmulator_classifierdefault());
    // nothing more
}

```

Finally, the test case can be provided. According to the initial test configuration, two PTCs **hwe** and **be** are used. The configuration is set up with **ATMSuite_Configuration**. After accessing the value for the data partition **giveInvalidPIN(current)**, the test behavior on the PTCs is started with **invalidPIN_hwe** and **invalidPIN_be**. The arbiter **Arbitration(be,hwe)** controls the correct termination of the test case. This completes the mapping.

```
//+invalidPIN() : Verdict
testcase invalidPIN_test()
runs on MTC_CType system SUT_CType {
    var HWEulator_CType hwe;
    var BankEmulator_CType be; // initial configuration
    ATMSuite_Configuration(system,mtc,be,hwe);
    const integer invalidPIN:= giveInvalidPIN(current);
    hwe.start(invalidPIN_hwe(invalidPIN));
    be.start(invalidPIN_be());
    Arbitration(be,hwe);
}
```

The following table summarizes the mapping of test model elements for the **invalidPIN** test case to TTCN-3.

Table A.3 - Mapping of invalidPIN to TTCN-3

| UML Testing Profile | TTCN-3 |
|---------------------------------|-------------------------------------|
| package ATM | module ATM |
| package ATMTTest | module ATMTTest |
| testContext ATMSuite | group ATMSuite |
| testComponent BankEmulator | type component BankEmulator |
| interface of BankEmulator | type port netCom_PType |
| testComponent HWEulator | type component HWEulator |
| interface of HWEulator | type port atmPort_PType |
| timer of HWEulator | timer of componentHWEulator |
| operation storeCardData | signature storeCardData |
| operation display | signature display_ |
| operation isPinCorrect | signature isPinCorrect |
| test behavior of HWEulator | function invalidPIN_hwe |
| classifier default of HWEulator | altstep HWEulator_classifierdefault |
| composite structure of ATMSuite | function ATMSuite_Configuration |
| testCase invalidPIN | testcase invalidPIN_test |

Annex B - Examples

(normative)

B.1 General

This annex contains an example of using the UML Testing Profile to specify test cases, from unit level, to integration and system level, to cross-enterprise system level. The example is motivated using an interbank exchange scenario in which a customer with a European Union bank account wishes to deposit money into that account from an Automated Teller Machine (ATM) in the United States.

The diagram in Figure B.1 provides an overview of the architecture of the system. The ATM used by this customer interconnects to the European Union Bank (EU Bank), through the SWIFT network, who plays the role of a gateway between the logical networks of the US Bank and the EU Bank.

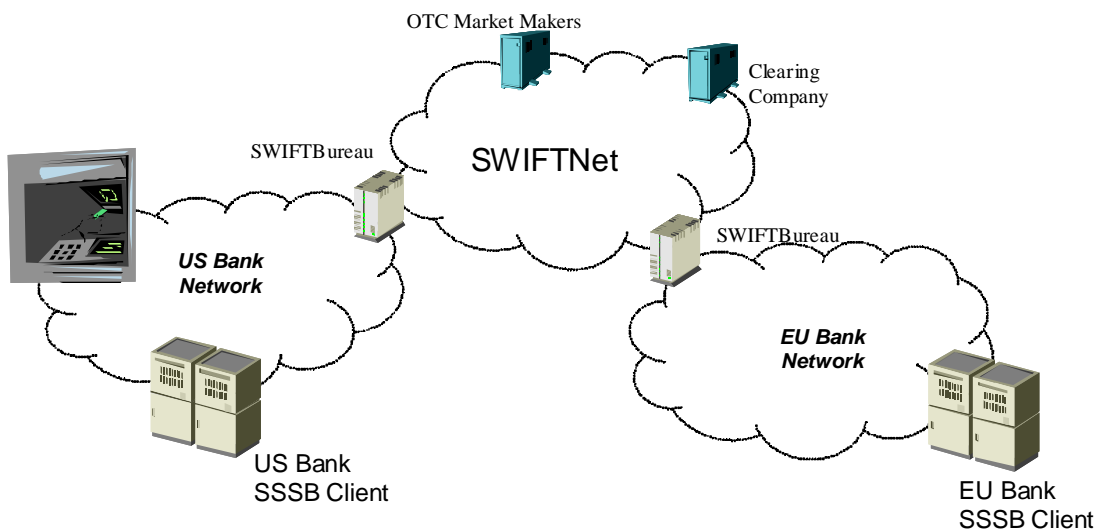


Figure B.1 - Overview on the InterBank Exchange Network

The packages for this example are shown in Figure B.2. They are used in the subsequent sub clauses.

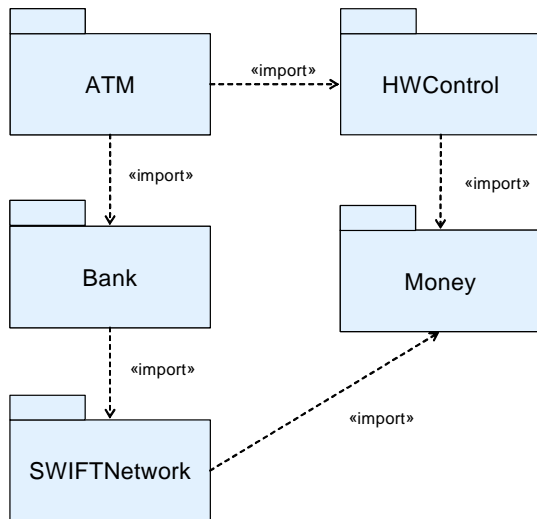


Figure B.2 - Packages for the InterBank Exchange Network

B.2 Money Example

This sub clause illustrates the use of the UML Testing Profile to define unit test level test cases. It reuses and extends the Money and MoneyBag classes provided as examples of the now famous JUnit test framework (see www.junit.org). In this scenario, these classes are used by the ATM to count the bills entered by a user when making a deposit in cash. As illustrated by the figure, these classes belong to the Money package.

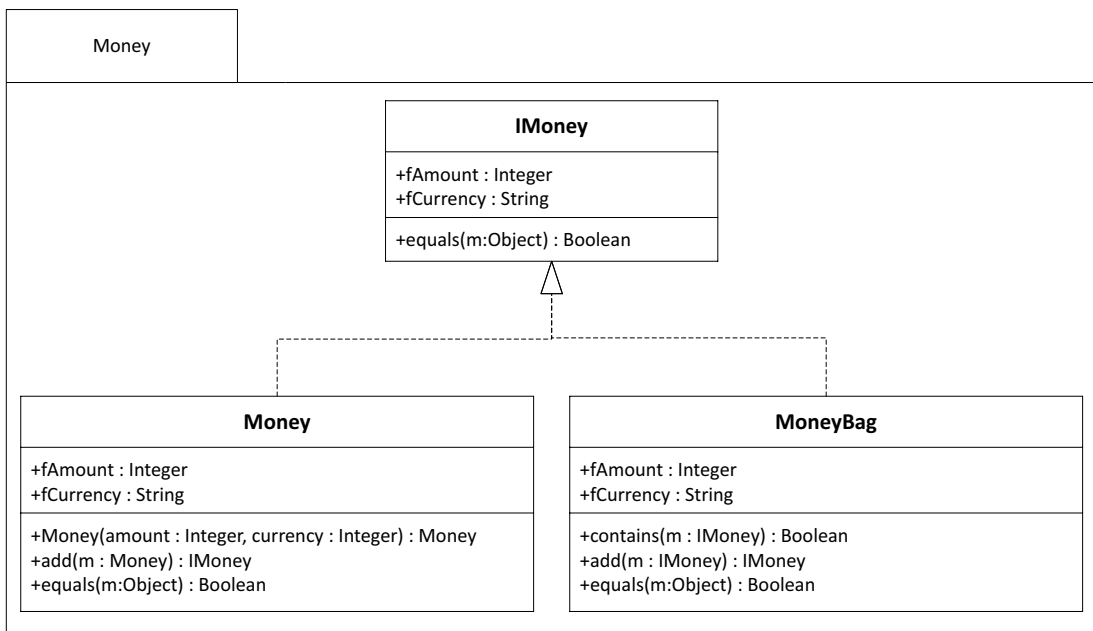


Figure B.3 - Money structure

The Test Objective is given as follows:

- Verify that the Money and MoneyBag classes are appropriately counting the bills added by the user:
 - When bills from the same currency are entered.
 - When bills from different currencies are entered.

The following diagram illustrates the test package. In this example, no test components are used, but rather the test behavior is implemented using the behavior of the Test Context classifier. The System Under Test is limited to the classes defined in the Bank package. As shown in the following diagram, the test package includes only the Test Context.

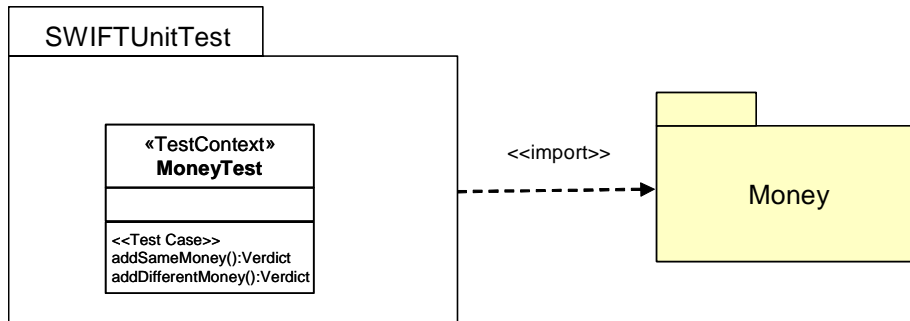


Figure B.4 - SWIFTUnitTest package

The first Test Objective primarily consists in exercising the Money interfaces and ensuring that the Money class returns an object of type Money with the correct amount and currency. The following diagram highlights the behavior of the addSameMoney behavioral feature

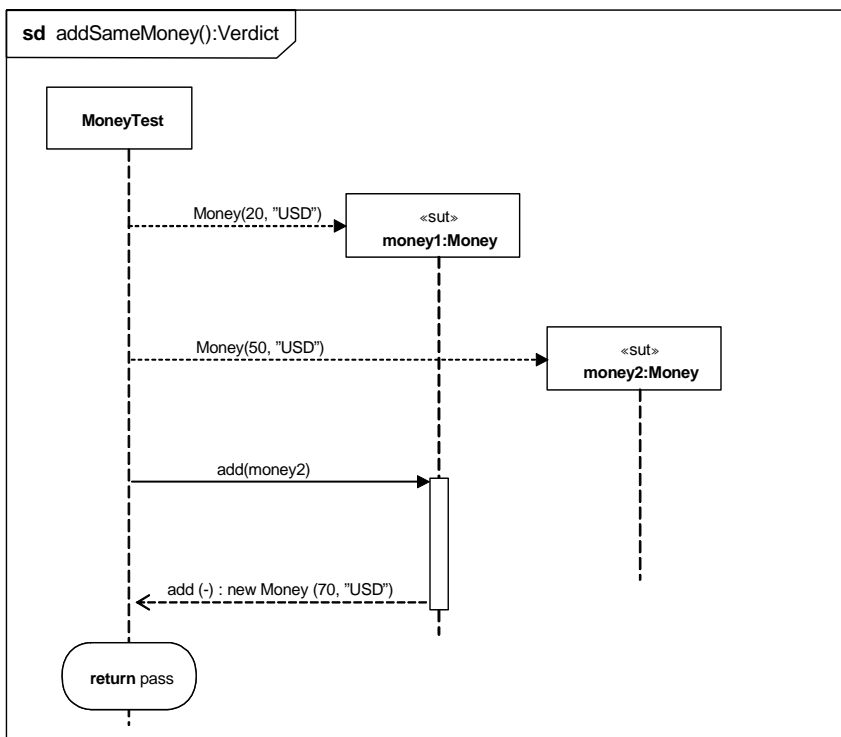


Figure B.5 - Unit test behavior for addSameMoney

The second Test Objective consists in exercising the Money interfaces and ensuring that the Money class returns an object of type MoneyBag with the currencies of the two Money objects that were added during the call to the add operation. The following diagram highlights the behavior of the addDifferentMoney behavioral feature.

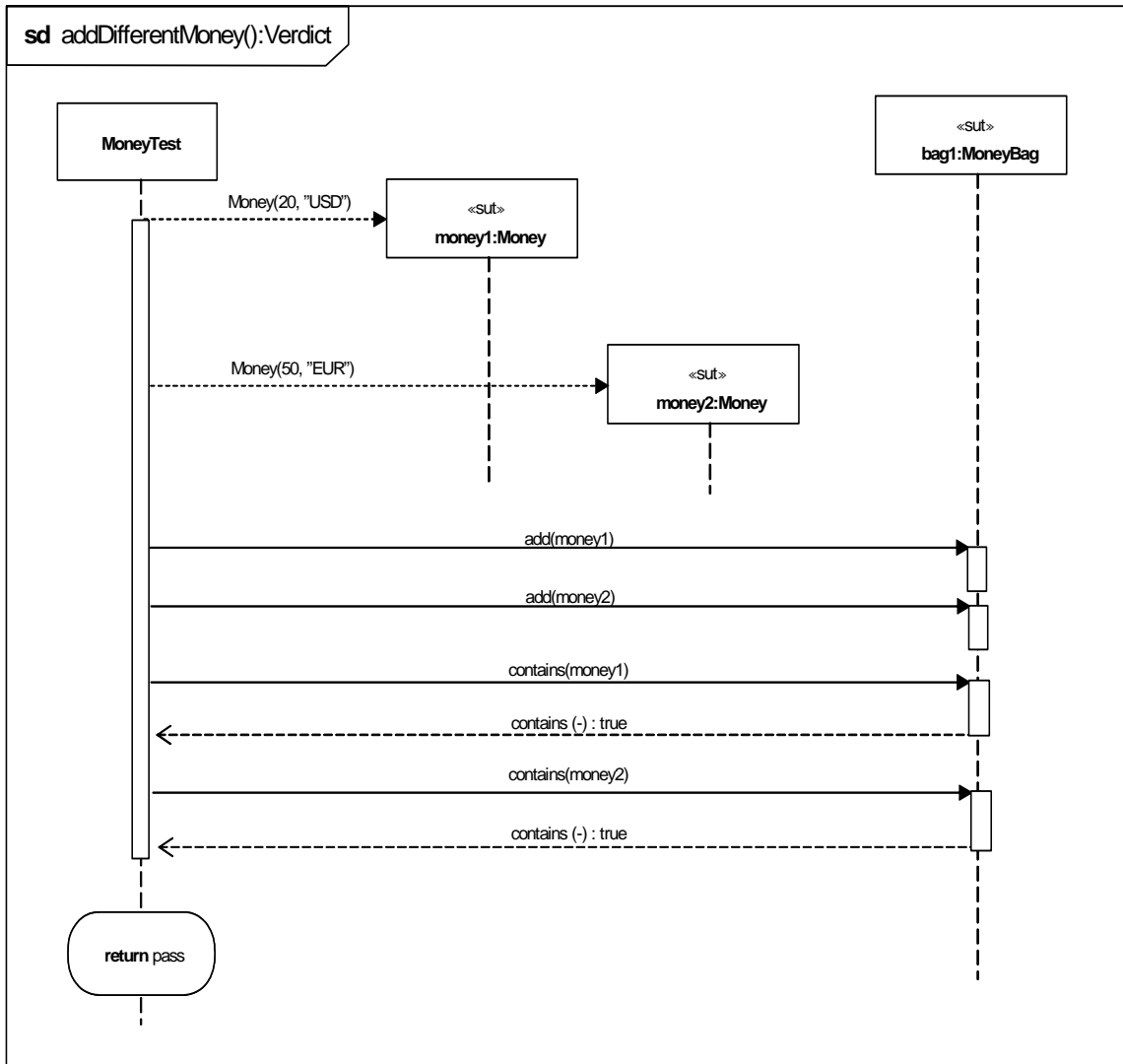


Figure B.6 - Unit test behavior for addDifferentMoney

B.3 Bank ATM Example

- This part of the example illustrates how the UML Testing Profile can be used for specifying tests at integration and system levels. The purpose of these tests is to verify the logic of the ATM machine when a user initiates a transaction to deposit and wire money to an account in another part of the world. This includes authorizing a card and a pin-code and initiating communication with the bank network. The hardware, bank, and network connections are all emulated, since we are testing the logic of the ATM machine itself only.

The ATM logic is specified in the ATM package. The ATM package imports the HWControl package where the interfaces to the hardware is specified, and the Bank package, where the interface to the bank is specified. Figure B.7 shows the packages involved in this part of the example.

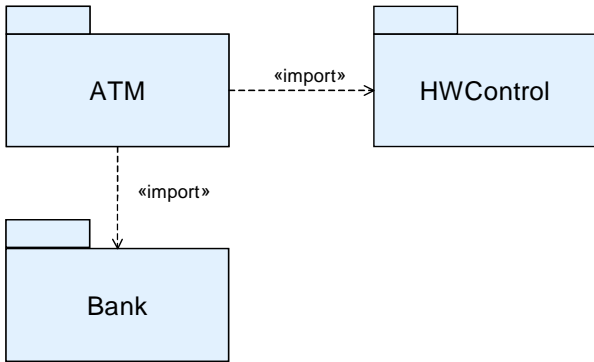


Figure B.7 - ATM and related packages

Figure B.8 shows the public parts of these packages. The BankATM class controls the ATM logic and is the focus of our tests. It implements the IATM interface for the control logic and relies on a number of interfaces to communicate with the hardware and the bank.

Since the hardware and the bank is emulated, only the interfaces of the HWControl and Bank packages used by the BankATM class are shown.

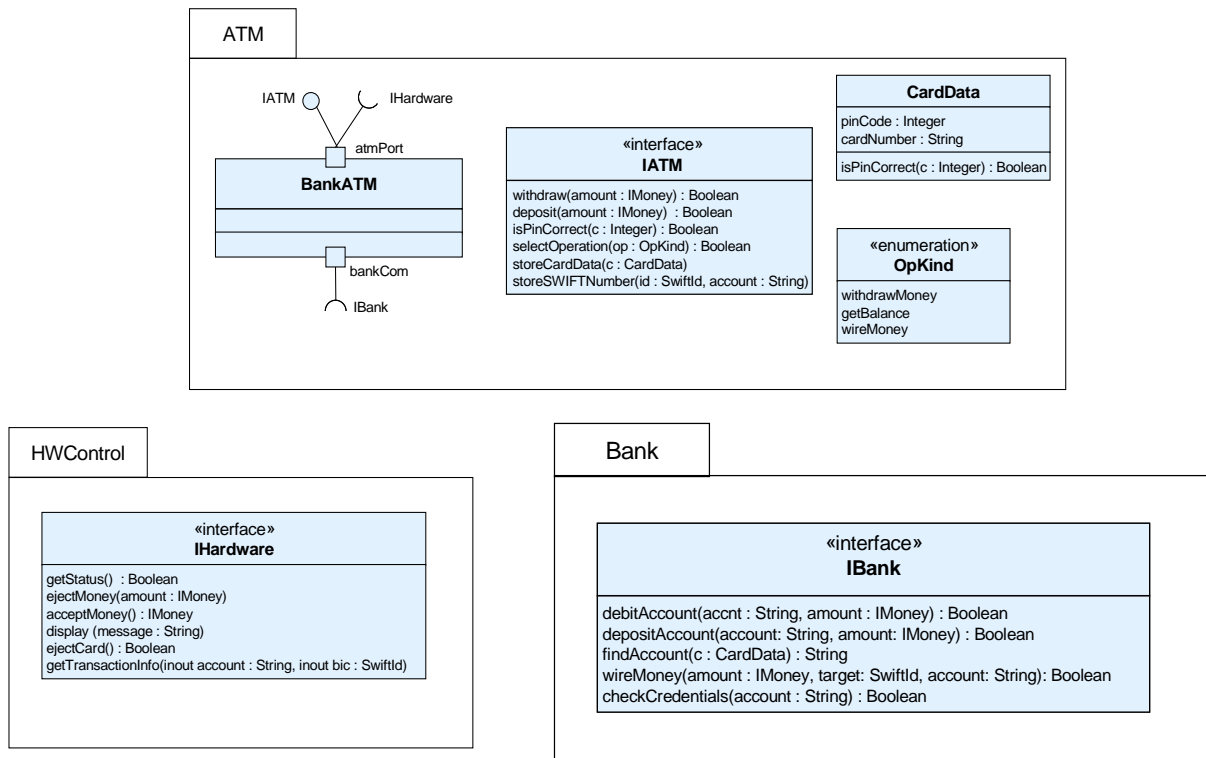


Figure B.8 - Elements of the system to be tested

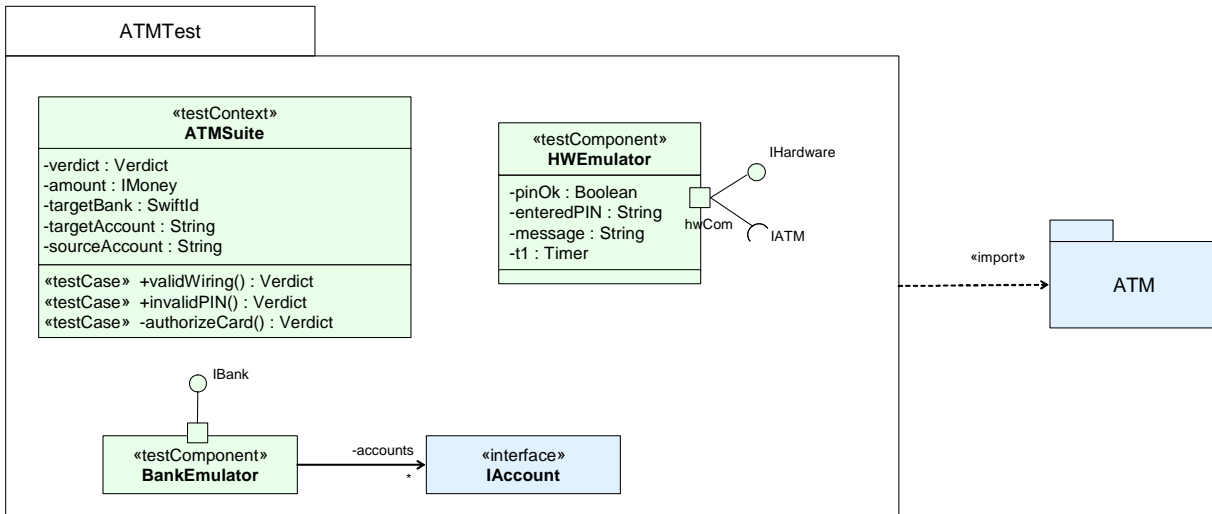


Figure B.9 - The ATMTTest package

The ATMTTest package shown in Figure B.9 contains all model elements necessary to fully specify our tests. ATMTTest imports the ATM package to get access to the elements to be tested. ATMTTest consists of one test context, ATMSuite, and two test components: BankEmulator and HWEulator. ATMSuite has three testcases: validWiring(), invalidPIN(), and authorizeCard(). Two have public visibility and one private. The test components implement the interfaces of the HWEulator and BankNetwork packages and will serve as emulators for these packages.

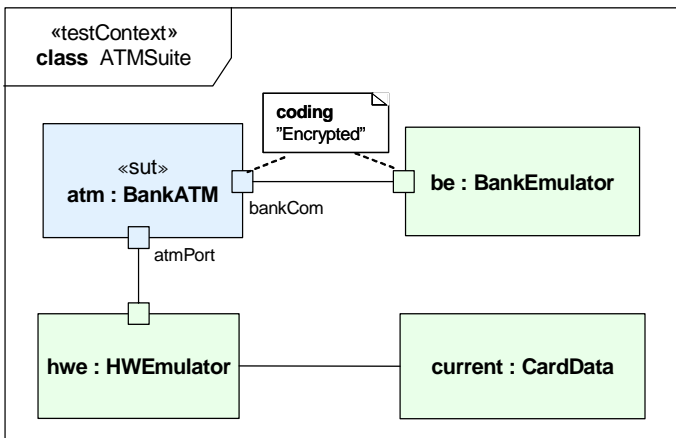


Figure B.10 - The composite structure of the ATMSuite test context

The test configuration (i.e., the composite structure of the test context) is shown in Figure B.10. The test configuration specifies how the SUT, a number of test components, and one utility part are used in a particular test context. Ports and connectors are used to specify possible ways of communication. Each test configuration must consist of at least one SUT.

The ATMSuite composite structure consists of one SUT, two test components, and one utility part. The SUT, atm, is typed by the BankATM class from the ATM package. The SUT is connected to two parts typed by test components, be and hwe. In addition, there's a utility part, current, used by hwe. A coding rule is applied to the ports of the "atm" and the "be" to show that the communication between these properties is encrypted.

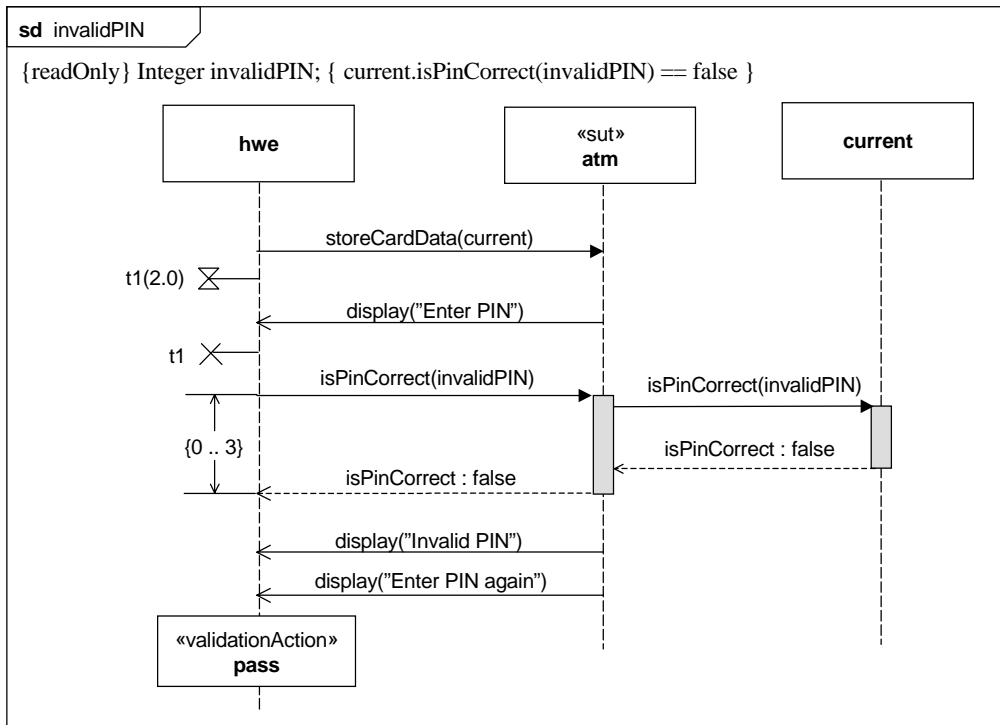


Figure B.11 - The behavior of the invalidPIN test case

The sequence diagram in Figure B.11 specifies the behavior for the invalidPIN() test case. The test objective of this test case is:

Verify that if a valid card is inserted, and an invalid pin-code is entered, the user is prompted to re-enter the pin-code.

Behaviors of test contexts and test cases can be specified using any UML behavior, but in this case an interaction is used. When used as a test behavior, the interaction specifies the expected sequence of messages. During a test case, validation actions can be used to set the verdict. Validation actions use an arbiter to calculate and maintain a verdict for a test case. Test cases always return verdicts. This is normally done implicitly through the arbiter and doesn't have to be shown in the test case behavior. In the example above, an arbitrated verdict is returned implicitly.

The diagram above also illustrates the use of a timer and a duration constraint. The timer is used to specify how long the hardware emulator will wait for the display ("Enter PIN") message. Once the message has been received, the timer is stopped. If the message does not appear within the time limit, the timer times out and the specification is violated. In this example the timeout is handled in the default of this test component, see Figure B.15 for details. The timer t1 is an attribute of the HWEulator test component, see Figure B.9.

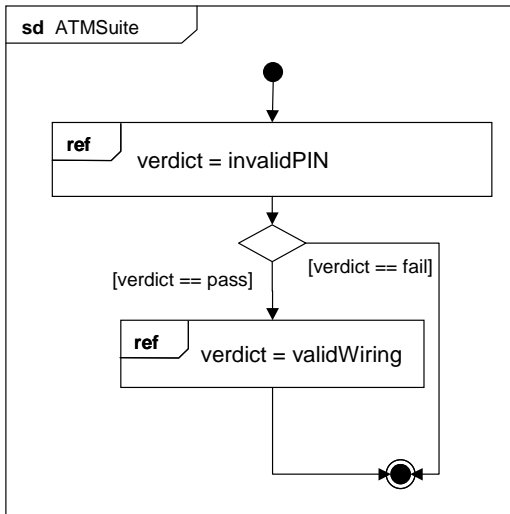


Figure B.12 - Classifier behavior for ATMSuite

Execution of the test cases of a test context, commonly referred to as test control, can be specified in the classifier behavior of the test context. Figure B.12 above shows an example of this using an interaction overview diagram. Another way to control the execution is to call the test cases just as ordinary operations from outside of the test context.

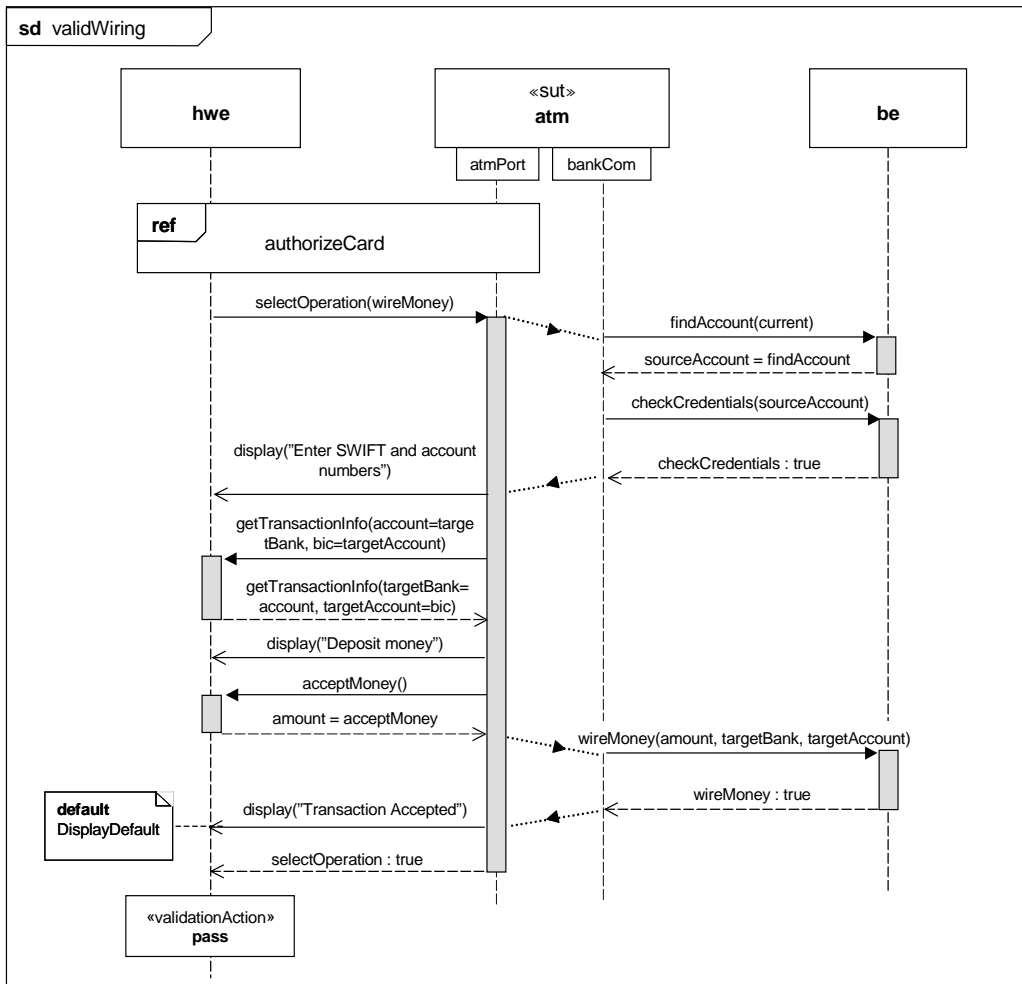


Figure B.13 - The validWiring test case

The validWiring test case is slightly more elaborated, with the following test objective:

Verify that when a user with the right credentials initiates a wiring of US dollars to his European account the transaction is correctly handled.

One of the other test cases in the context, authorizeCard() is referenced through an interaction occurrence. This illustrates how test case definitions can be reused within a test context. General ordering is used to illustrate how to sequence messages between two test components. Finally, the default concept is introduced.

A default specifies how to respond to messages or events not specified in the original test case behavior. Defaults are typically used for exception handling. To include all possible message sequences in the test case behavior would be cumbersome. Defaults can be applied on many different levels (e.g., test components and upon reception of individual messages).

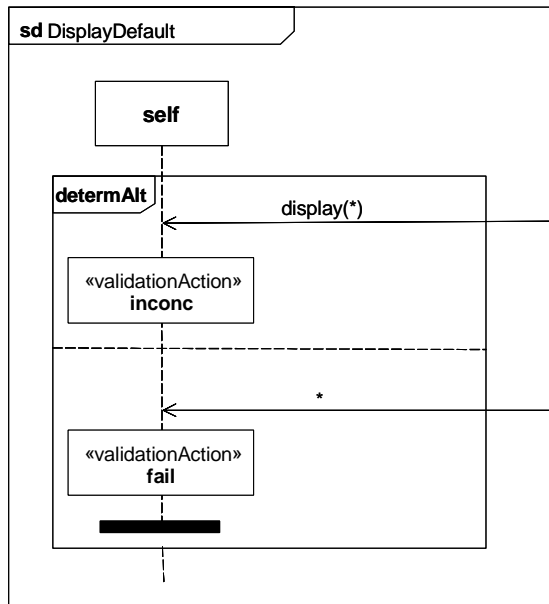


Figure B.14 - Default for individual message reception

Figure B.14 specifies the DisplayDefault, a default for the reception of the *display* (“*Transaction accepted*”) message in the *validWiring* test case. The DisplayDefault describes what happens when a different message is received. An inconc verdict is assigned if a display message is received with a parameter different to the expected one. Otherwise, fail is assigned and the test component finishes.

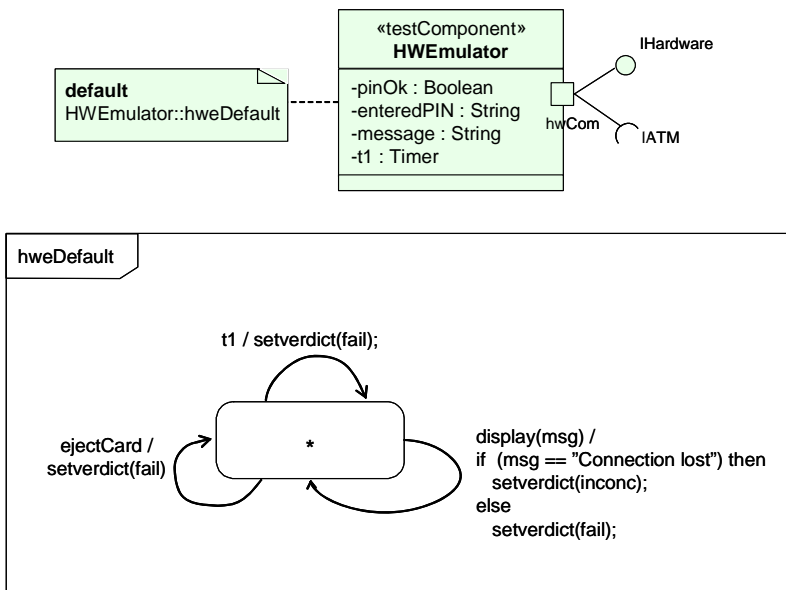


Figure B.15 - A statemachine default applied to a test component

Figure B.15 specifies and applies a default to a single test component, the HWEulator test component. This default applies to all test behaviors owned by the test component.

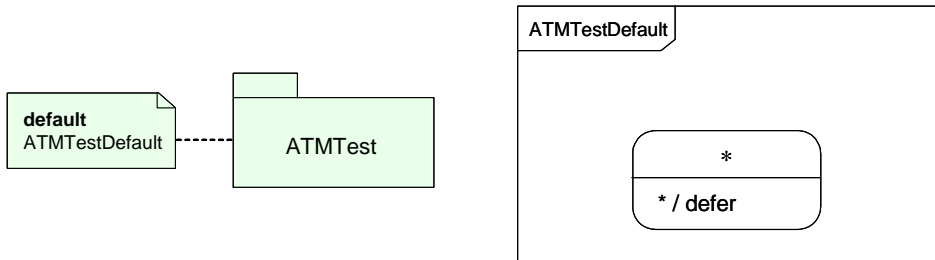


Figure B.16 - Package level default

In some cases it is necessary to apply a default to many or all elements in a test model. Assume, for example, that you need to adjust the UML semantics for events. Unless explicitly deferred, events will be discarded on reception. This might not be desirable from a testing perspective where all events are considered important. Figure B.16 shows how this can be accomplished by defining a default with the desired behavior and applying it to a package. Defaults applied to a package will apply to all test components in the package and therefore, they often need to be very general in their specification. The *ATMTTestDefault* contains wildcards to be applicable to all test components in the package. The star '*' in the state symbol means 'any state,' and the star before the defer statement means any signal.

For any test behavior, several defaults may be applied at the same time. In our example when receiving the *display("Transaction Accepted")* message, three defaults are active: the *DisplayDefault*, the *hweDefault*, and the *ATMTTestDefault*. If one default does not handle a message, the next default is checked, and so on. The evaluation order is given by the scope on which the defaults are applied. Evaluation starts at the innermost scope and traverses outwards.

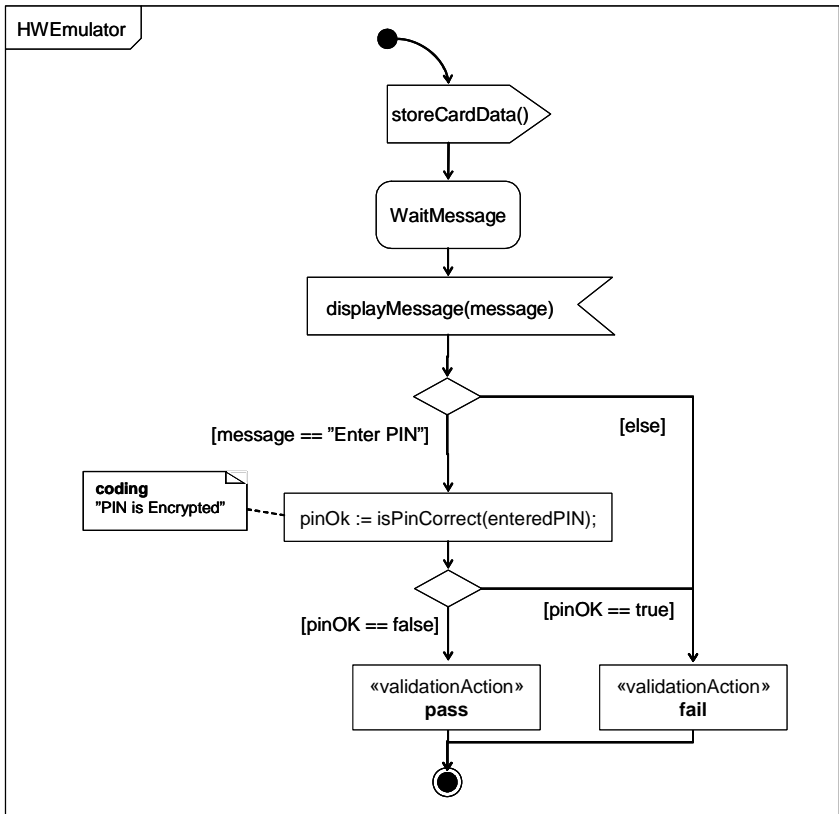


Figure B.17 - Test component behavior

In many cases, there's a need to specify the detailed behavior of individual test components (e.g., for test generation purposes). This is done by specifying the classifier behavior of a test component. State machine diagrams are suitable for this. Figure B.17 contains parts of the test behavior for the HWEmulator test component. (The part corresponding to the invalidPIN test case.)

B.4 Money Transfer Example

This sub clause contains an example of using the UML Testing Profile to specify cross-enterprise system level test cases. The example is motivated using an interbank exchange scenario in which a customer with a European Union bank account wishes to deposit money into that account from an Automated Teller Machine (ATM) in the United States. Likewise, we wish to emulate the same scenario being initiated from an ATM in Europe. This example builds on the unit level and sub-system level examples covered in the previous two sections. This example illustrates several key concepts from the UML Testing Profile, including: test configuration (with multiple components), test control, arbiter, validation actions, data pools, as well as concepts from load/stress testing. The load/stress test objective states that a combination of European and US initiated transactions must behave correctly and 98% of them must be completed within 4 seconds.

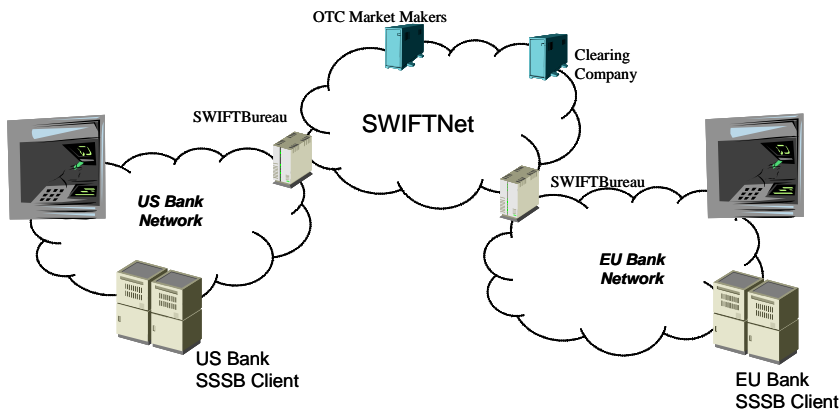


Figure B.18 - Interbank Exchange Network overview

Five packages are used to structure the classes and interfaces for the example. Three of these are known from the previous examples (ATM, Money, and HWControl). Two additional packages are introduced that are unique to this example (BankNetwork and SWIFTNetwork). Figure B.19 illustrates the package structure of the system under test.

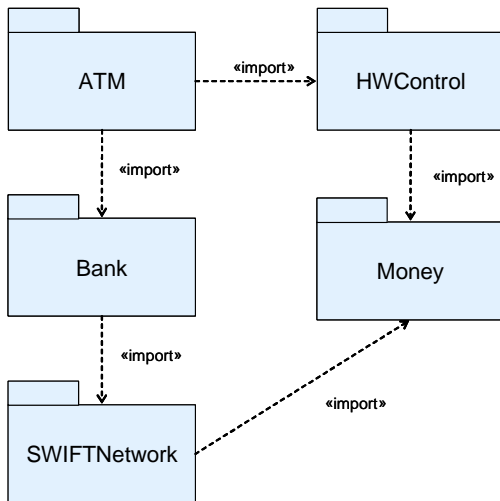


Figure B.19 - Package structure of the Interbank Exchange Network

Figure B.20 illustrates the contents of the Bank package, while Figure B.21 illustrates the contents of the SWIFT package. The IBank interface provides operations to find, credit, and debit accounts; to check credentials; and to wire money from one account to another. The IAccount interface provides operations to credit and debit accounts, and to check the balance of an account. The ISWIFT interface provides an operation to transfer a given amount from a source account to a target account. These interfaces are the focus of this sub clause, although the example also uses interfaces and classes from the previous two examples.

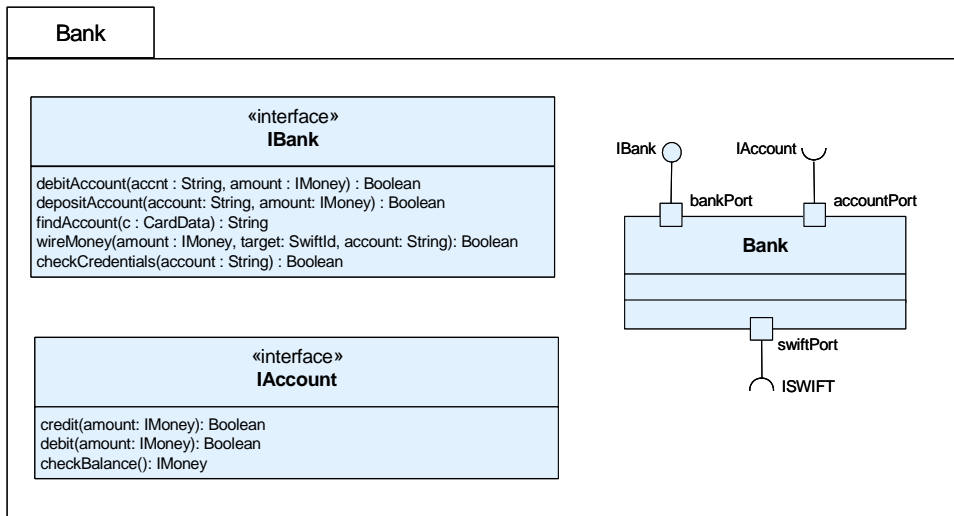


Figure B.20 - BankNetwork

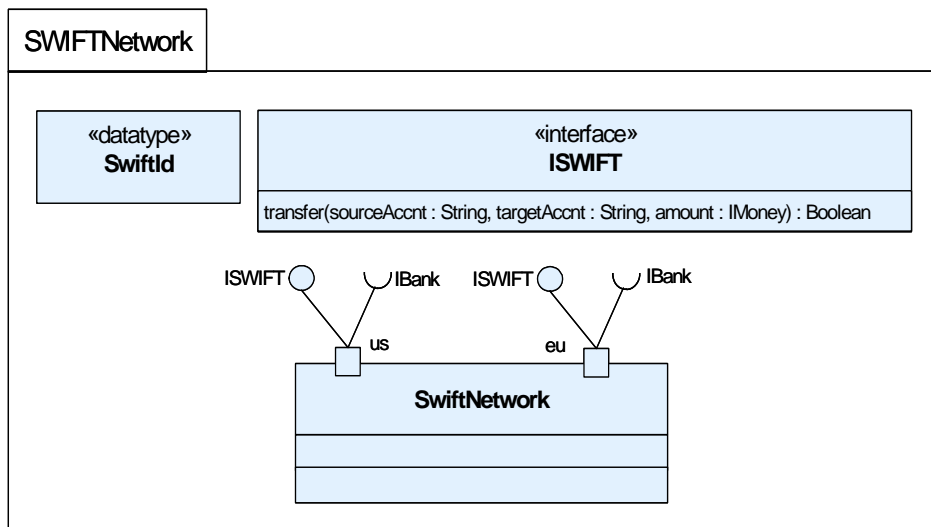


Figure B.21 - SWIFTNetwork

Figure B.22 is a package illustrating the test architecture for the example. The system under test is scoped to be the SWIFT network, the US and European Bank Networks, and ATM systems. Two test components provide the capability to execute and verify that the transfer occurred correctly: TransactionController and LoadManager. The TransactionController drives the ATMs and is used to represent the accounts for both the US and EU banks. These allow verification that transferred money is debited from the US account and deposited to the EU accounts and vice-versa. They also provide verification that an invalid transfer does not result in the same debit/credit cycle. The LoadManager controls

the workload of the test case. Additionally, a specialization of Arbiter is provided that supports the necessary capabilities to do load testing. Two additional types are also provided for users as utilities: DataPool provides data management and access services, and TrxnData contains the data provided by the DataPool for performing a transaction.

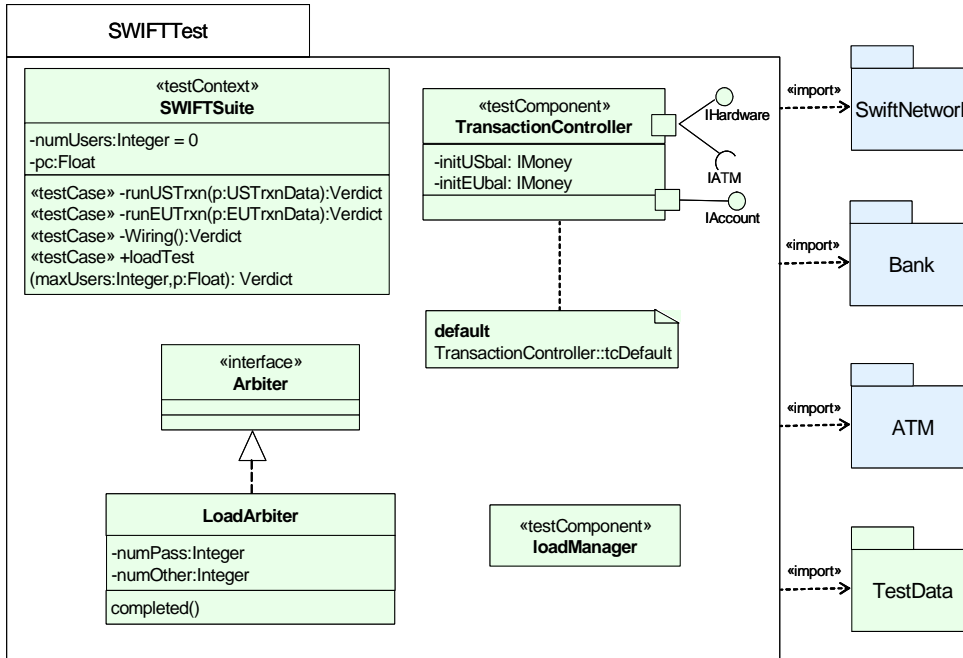


Figure B.22 - SWIFTTest package

Figure B.23 is a package illustrating the data pool, data partition, and data selector concepts. The TestData package defines for TrxnData the data pool DataPool and the data partitions EUTrxnData and USTrxnData. The data partitions have two data samples defined each. Data selectors getEUTrxnData, getUSTrxnData and getDistributionInterval are used for the access to the data pool and the data partitions.

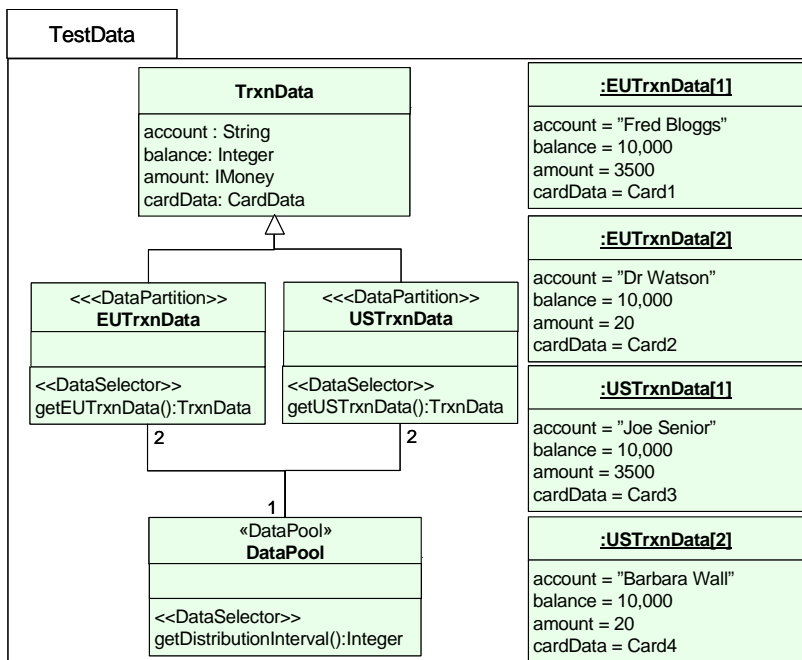


Figure B.23 - TestData package

Figure B.24 illustrates the internal structure of the TestContext. This shows how the SUT components and the test components are connected. ATMs are connected to the US & EU banks, both of which are connected via the SWIFT network. The TransactionController is connected to the ATM components and both the US and EU banks. The LoadManager is connected to the TransactionController and serves to ensure that the various properties of the load test are managed correctly. The LoadArbiter is connected to the LoadManager and TransactionController test components.

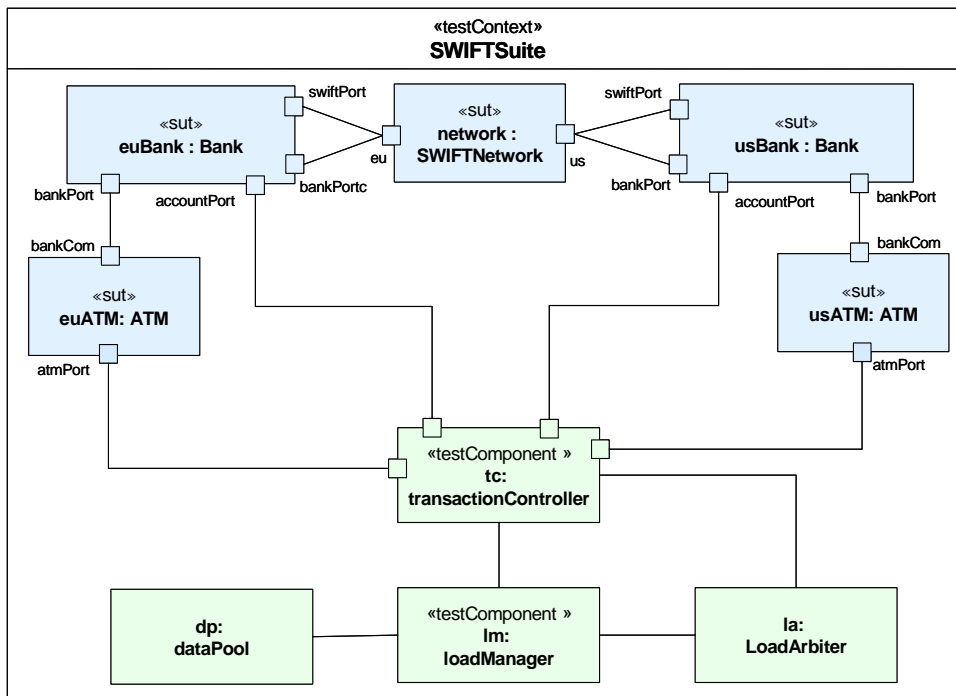


Figure B.24 - The composite structure of the SWIFTSuite test context

Figure B.25 and Figure B.26 illustrate the behavior of the loadTest method of the TestContext element. The test is invoked with two parameters: the maximum number of virtual users that are simulated at any one time and the data pool reference. Given these parameters, the system launches the appropriate number and types of test cases and monitors their outcomes. The load manager lm is used as a generation. At first, the total test duration is set by a timer. Then, the first Wiring is started. Following the start of the Wiring test scenario another timer is started, which is used to set the duration between generations when the second timer expires. This will loop as long as the test duration expires. Then, the loop is left. The load manager applies a special validation action value and the arbitration is entered to calculate the final test case verdict (see Figure B.27).

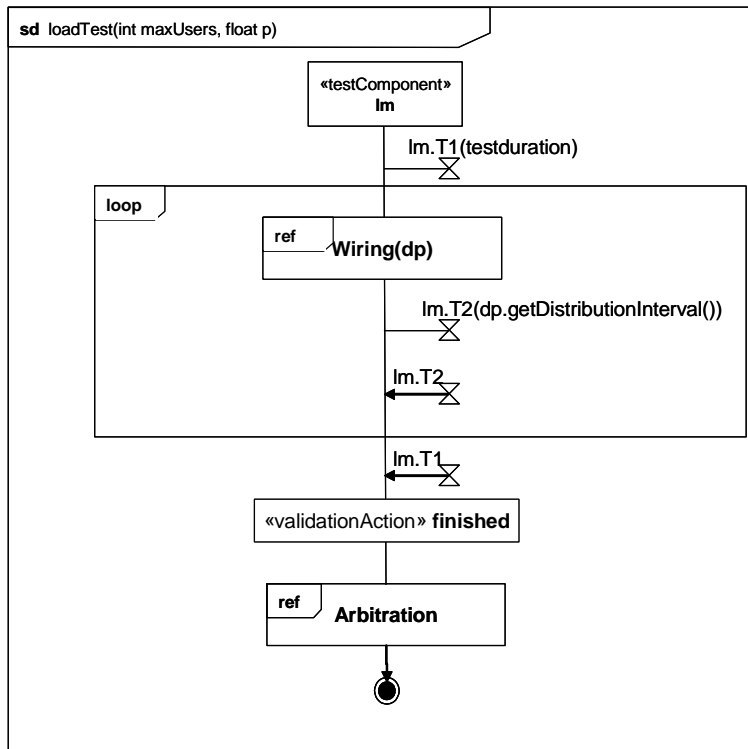


Figure B.25 - Main test behavior

Figure B.26 illustrates how an individual US wiring transaction is executed. The behavior is parameterized with the data pool dp. Firstly, an instance of the transaction controller is created and started. Then the test is started and a transaction is started using either data taken from the getEUTrxnData data partition or from the getUSTrxnData partition. The timing constraint stipulates that the execution of the transaction should take less than 4 seconds, otherwise the default handler will inform the Load Arbiter that the transaction has failed.

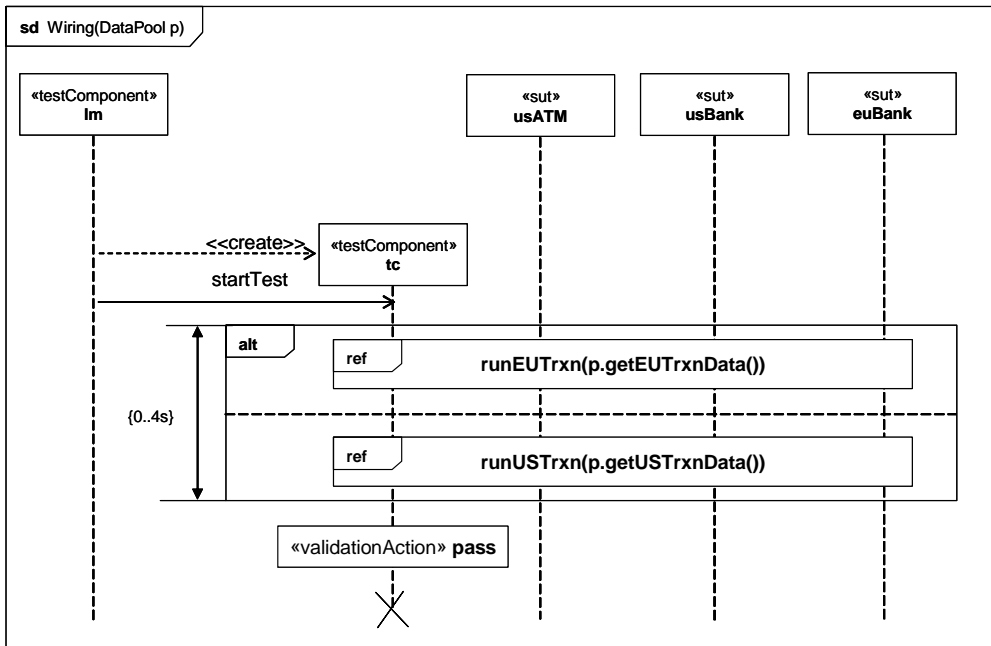


Figure B.26 - US initiated wiring transaction

The Arbitration behavior is given in Figure B.27. A pass verdict is assigned if the number of successful tests exceeds the given threshold, otherwise fail is assigned.

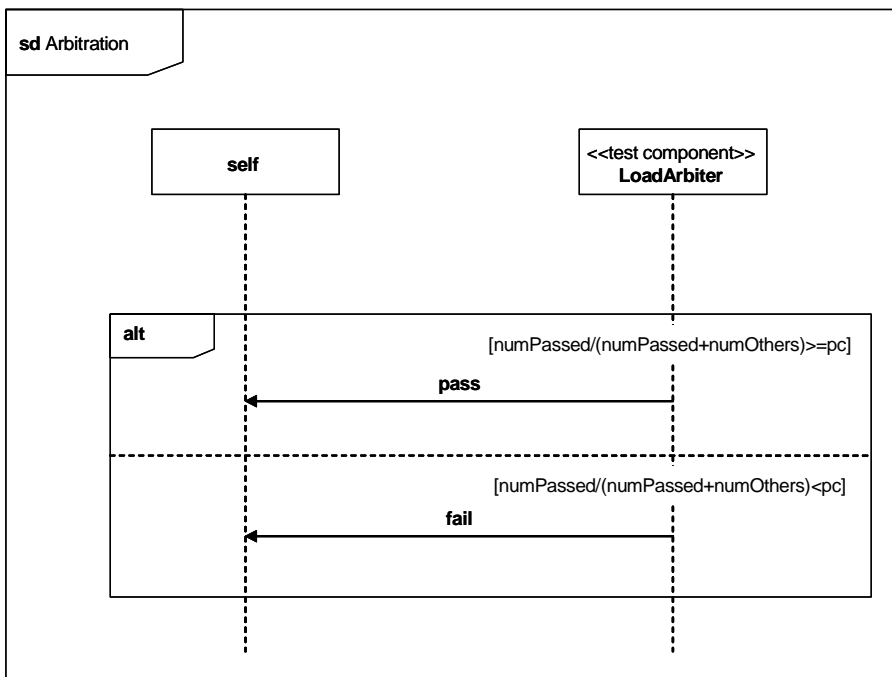


Figure B.27 - Arbitration behavior

Figure B.28 illustrates how the system obtains balance information from the banks prior to each transaction, as well as after each one is complete. These are used to validate that the transfer took place correctly. The information on the percentage of test cases that should be successful is used by the arbiter to determine whether or not the load test was successful.

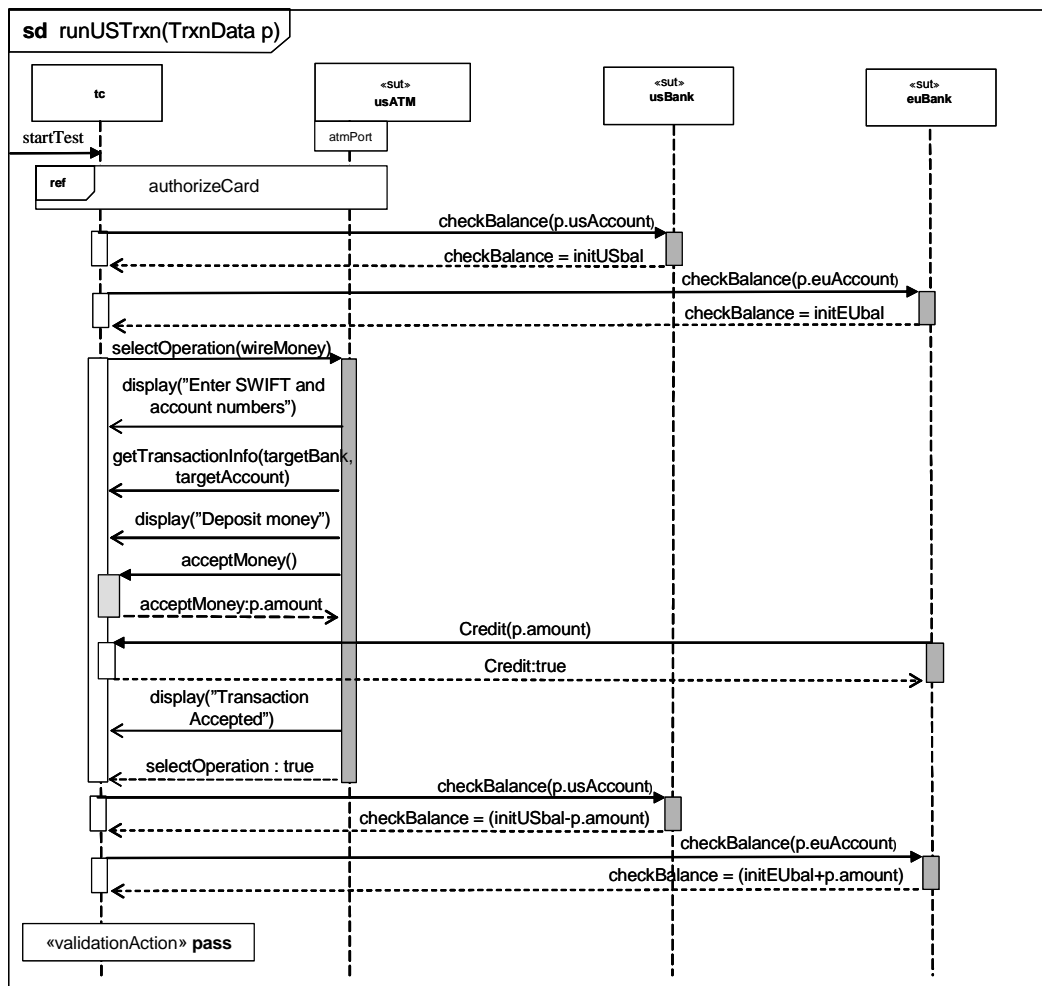


Figure B.28 - Transaction detail

Figure B.29 illustrates the behavior of the LoadArbiter component, which determines whether or not the load test was successful.

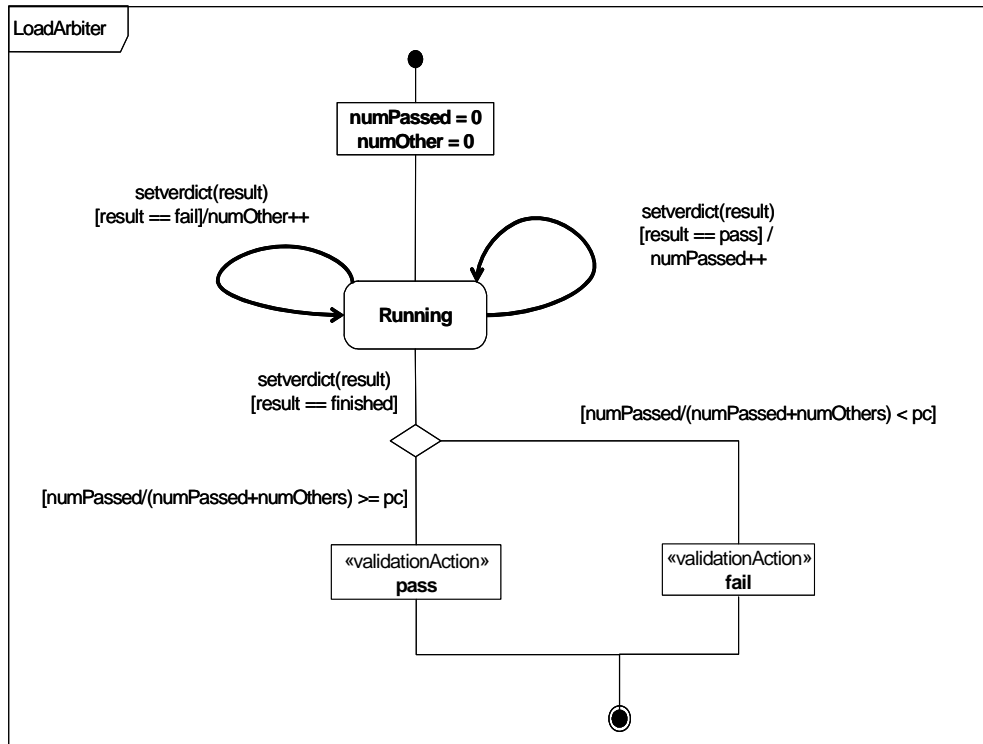


Figure B.29 - LoadArbiter behavior

Annex C - MOF-based Metamodel

(non-normative)

Note: The UTP MOF-based metamodel is obsolete since version 1.1 and will not be further maintained.

C.1 MOF-based Metamodel

This annex provides a stand alone metamodel for the UML Testing Profile. This metamodel is an instance of the MOF metamodel, providing the ability for MOF based tools to comply with the UML Testing Profile standard. The compliance provided by the MOF-based metamodel is limited to the architecture elements of the UML Testing Profile enabling traceability and management of test assets across tools. Specifically, the behavioral aspects of the UML Testing Profile are left out of the current metamodel as they would not provide any substantial improvement over this goal, while requiring a significant portion of the UML 2.0 metamodel to be included in the standalone metamodel.

We present the MOF metamodel diagrams and provide more detailed information as it pertains to the metamodel. A majority of the concepts from the UML Testing Profile are also present in the metamodel. Except for the information regarding profile alignment with the UML 2 Superstructure Specification, the information provided in the profile sub clause (2.3) also applies to the MOF based metamodel unless we provide other information and state that it supersedes the information from the profile sub clause.

Figure C.4 provides three interfaces that are not technically part of the MOF-based metamodel. These are used to describe the semantics that should be provided by instances of the Timer, Arbiter, and Scheduler metaclasses.

C.1.1 Test Architecture and Test Behavior

The test architecture concepts are related to the organization and realization of a set of related test cases. These include test contexts, which consist of one or more related test cases. The test cases are potentially realized by test components, and the verdict of a test case is assigned by an arbiter.

Similarly, test behavior concepts describe the behavior of the test cases that are defined within a test context. Associated with test cases are test objectives, which describe the capabilities the test case is supposed to validate. Test cases consist of behavior that includes validation actions, which update the verdict of a test case, and log actions that write information to a test log. Behavioral concepts also include the verdicts that are used to define the test case outcomes, and default behavior that is applicable when the something other than the specified behavior is observed.

Figure C.1 presents the metamodel diagram for the Test Architecture and Test Behavior concepts.

C.1.1.2 TestContext

Semantics

A test context contains a set of zero or more test cases. The test cases are realized within the context by instances of test components that are deployed and act against the SUT. The test context has behavior, which is used to control the execution of the test cases that the context owns.

Associations

- testConfiguration:Deployment[0..*]
A deployment describing the configuration of test components and SUT.
- testCase:TestCase[0..*]
The collection of test cases owned by the test context.
- sut:SUT[1..*]
The elements representing the system under test.
- behavior:Behavior[0..*]
The behavior of the test context, which is used to control test case execution.
- component:TestComponent[0..*]
The collection of test components that realize the test cases within the test context.
- arbiter:Arbiter[1]
The implementation of the IArbiter interface used to determine the verdicts of the test cases within the test context.
- executions:TestLog[0..*]
Traced elements representing the logged information for each execution of a test context.
- dataPool:DataPool[0..*]
Data pools associated to the test context.

Attributes

- name: String [1]
The name of the test context.
- testContextDefinition: String [1]
The definition of the test context (in addition to the behavior definition of the test context).

C.1.1.3 SUT

Semantics

The SUT is a black-box from the point of view of the test specification. Thus, test components only have access to the public operations defined on the interface of the SUT.

Attributes

- name: String [1]
The name of the SUT.
- SUTdefinition: String [1]
The definition of the SUT.

C.1.1.4 TestComponent

Semantics

Zero or more test components realize the behavior associated with a test case. A test component executes sequences of stimuli and observations against the SUT. It can also take part in coordination with other components. Whenever a test component performs a validation action, the arbiter is notified of the outcome so that it may update the test case verdict if necessary. The timezone is an attribute that is available at runtime.

Associations

- behavior:Behavior[1]
The behavior of the test component.
- zone:Timezone [0..1]
Specifies the timezone to which a test component belongs.
- dataPool:DataPool[0..*]
Data pools associated to the test component.

Attributes

- name: String [1]
The name of the test component.
- testComponentDefinition: String [1]
The definition of the test component (in addition to the behavior definition of the test component).

C.1.1.5 Arbiter

Semantics

An arbiter is an entity within a test context that is capable of determining the final verdict of a test case based on input from the test components realizing the test case. An instance of the Arbiter metaclass should provide the operations defined by the IArbiter interface shown in Figure C.4.

Associations

- behavior:Behavior[1]
The behavior of the arbiter.

Attributes

- name: String [1]
The name of the arbiter.
- arbiterDefinition: String [1]
The definition of the arbiter (in addition to the behavior definition of the arbiter).

C.1.1.6 Scheduler

Semantics

A scheduler is an entity within a test context that controls the running of the test cases. It will keep track of the creation and destruction of test components and give instructions to the existing test components when to start executing a given test case. It will communicate with the arbiter when the time is right to produce the verdict for a test case.

Associations

- behavior:Behavior[1]
The behavior of the scheduler.

Attributes

- name: String [1]
The name of the scheduler.
- schedulerDefinition: String [1]
The definition of the scheduler (in addition to the behavior definition of the scheduler).

C.1.1.7 TestCase

Semantics

A test case is a set of behavior performed against the SUT and owned by a test context. Test cases have access to all elements in a test context, including the SUT elements and test components. A test case produces a log containing all log actions and the verdict.

Associations

- behavior:Behavior[1]
The dynamic behavior of the test case.
- executions:TestLog[0..*]
Log elements representing the logged information for each execution of a test case.
- testObjective:TestObjective[1..*]
A test objective is a description of the capability being validated by the test case.
- testContext:TestContext[1]
The test context to which the test case belongs.

Attributes

- name: String [1]
The name of the test case.
- testCaseDefinition: String [1]
The definition of the test case (in addition to the behavior definition of the test case).

C.1.1.8 TestObjective

Semantics

A test objective is a dependency to another element that describes the purpose of a test case. Test objectives have no dynamic behavior, and only serve to describe the rationale for a test case.

Attributes

- name: String [1]
The name of the test objective.
- arbiterDefinition: String [1]
The definition of the test objective.

C.1.1.9 Verdict

Verdict is defined exactly as in “Verdict (a predefined enumeration)” on page 27.

C.1.1.10 Deployment

Semantics

The deployment represents a configuration of test components and the SUT. It specifies the execution architecture for a test context. In the profile, deployment concepts and capabilities come directly from the UML 2 Superstructure Specification.

C.1.1.11 TestLog

Semantics

The log represents a snapshot of the execution of a test case. It contains deployment information, the ordered set of log actions performed during the test case, and the final verdict.

Associations

- testConfiguration:Deployment[1]
The deployment information for the test case producing this log.

Attributes

- name: String [1]
The name of the test log.
- testLogDefinition: String [1]
The definition of the test log (in addition to the behavior definition of the test log).
- verdict:Verdict [1]
The final verdict achieved by the test case producing this log.

C.2 Test Data

The test data concepts provide the capabilities to specify data values, associate specific encodings with data values, and specify wildcards such as “?” (any value) and “*” (any value including none). These rudimentary features are all that are required in the UML Testing Profile, as higher level constructs such as data pools can be defined as test components within the standard or provided by specific tool implementations.

C.2.1 Data Concepts

Figure C.2 is a diagram illustrating the data concepts.

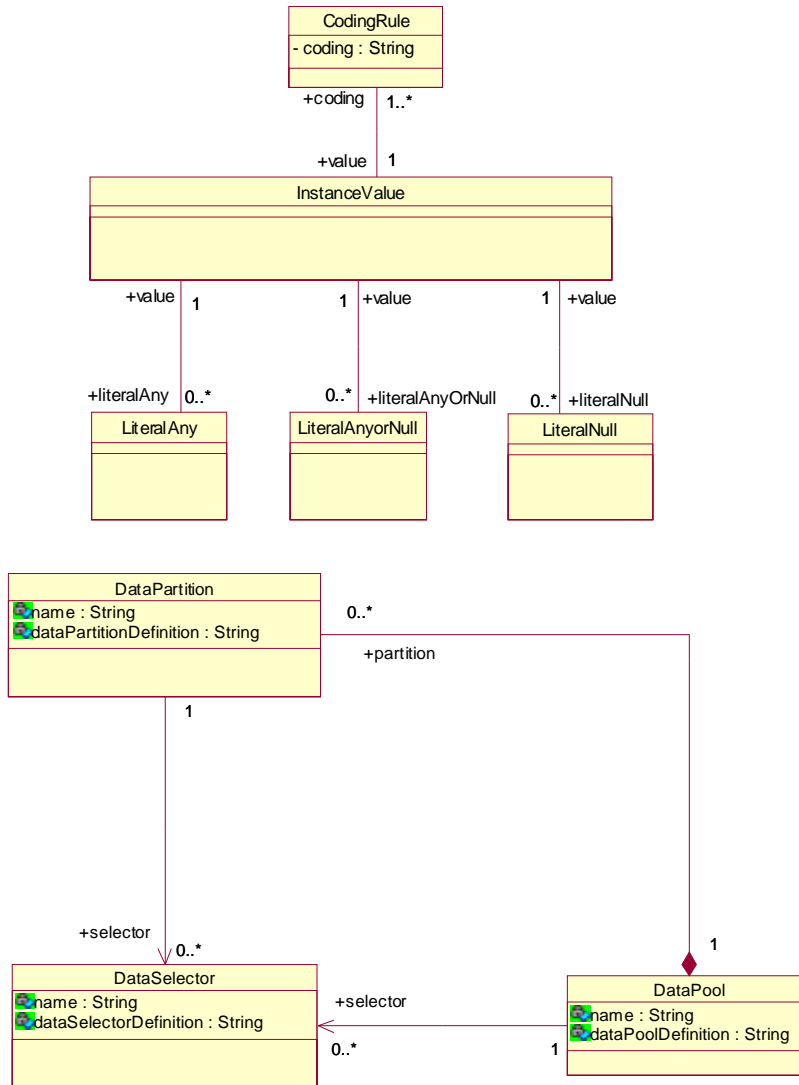


Figure C.2 - Test data portion of the MOF-based metamodel

C.2.1.1 InstanceValue

Semantics

An instance value is a specification of a data instance for use in the test context. It is based explicitly on the InstanceValue concept from the UML 2 Superstructure Specification.

Associations

- `coding: CodingRule [1..*]`
The set of coding rules that are applied to the instance value.

- literalAny:LiteralAny [0..*]
A “?” character indicating that the instance value can be any non-null value.
- literalAnyOrNull:LiteralAnyOrNull [0..*]
A “*” character indicating that the instance value can be any value (including null.)
- literalNull:LiteralNull[0..*]
A “-” character indicating that the instance value can be null.

C.2.1.2 CodingRule

Semantics

A rule that specifies how an instance value is to be encoded. As defined in “CodingRule” on page 29,” it contains a string attribute that specifies the coding scheme.

Associations

- value: InstanceValue [1]
The instance value to which the coding rule applies.

C.2.1.3 LiteralAny

Semantics

A “?” symbol specifying that any value except null may be associated with a particular instance value.

Associations

- value: InstanceValue [1]
The instance value to which the specification applies.

C.2.1.4 LiteralAnyOrNull

Semantics

A “*” symbol specifying that any value (including null) can be associated with a particular instance value.

Associations

- value: InstanceValue [1]
The instance value to which the specification applies.

C.2.1.5 LiteralNull

Semantics

A “-” symbol specifying the absence of a value for a particular instance value.

Associations

- value: InstanceValue [1]
The instance value to which the specification applies.

C.2.1.6 DataPool

Semantics

Zero or more data pools can be associated to test contexts or test components. Data pools specify a container for explicit values or data partitions. They provide an explicit means for associating data values for repeated tests (e.g., values from a database, etc.), and equivalence classes that can be used to define abstract data sets for test evaluation.

Associations

- partition:DataPartition[0..*]
A set of data partitions defined for this data pool.
- selector:DataSelector[0..*]
A set of data selectors defined for this data pool.

Attributes

- name: String [1]
The name of the data pool.
- dataPoolDefinition: String [1]
The definition of the data pool.

C.2.1.7 DataPartition

Semantics

Zero or more data partitions can be defined for a data pool. A data partition is a container for a set of values. These data sets are used as abstract equivalence classes within test context and test case behaviors.

Associations

- selector:DataSelector[0..*]
A set of data selectors defined for this data partition.

Attributes

- name: String [1]
The name of the data partition.
- dataPartitionDefinition: String [1]
The definition of the data partition.

C.2.1.8 DataSelector

Semantics

Zero or more data selectors can be defined for data pools or data partitions. Data selectors allow the definition of different data selection strategies.

Attributes

- name: String [1]
The name of the data selector.
- dataSelectorDefinition: String [1]
The definition of the data selector.

C.2.2 Time

As discussed in “Time (a predefined type)” on page 38, key time concepts are required to allow the specification of complete and precise test contexts and components. Within the MOF-aligned metamodel, we provide a subset of the timing concepts defined in the profile. This is because many of the actions defined in the profile are not required in MOF-aligned model as they can be implemented directly in tools realizing the metamodel. The concepts included in the model include two primitive types (time and duration), as well as timers and timezones.

Figure C.3 illustrates the time concepts for the metamodel.

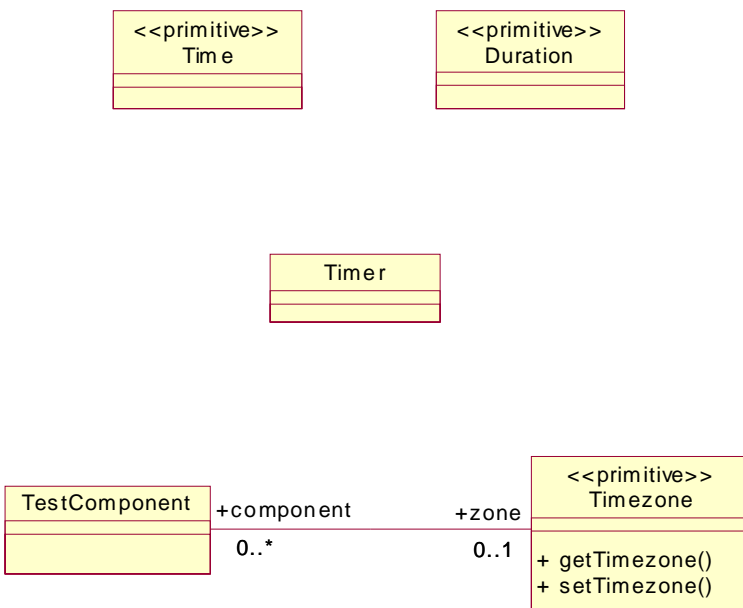


Figure C.3 - Time portion of the MOF-based metamodel

C.2.2.1 Time

Time is defined exactly as in “Time (a predefined type)” on page 38.

C.2.2.2 Duration

Duration is defined exactly as in “Duration (a predefined type)” on page 35.

C.2.2.3 Timer

Semantics

A timer is an element that can provide information regarding time to a test component. It can be started, stopped, queried for the current time, and queried to determine whether or not it is running. Instances of the Timer metaclass should provide these capabilities by implementing the ITimer interface defined in Figure C.4.

C.2.2.4 Timezone

Semantics

Timezone is a primitive type that serves as a grouping concept for test components. Test components that are associated with the same timezone are synchronized and can share time values.

Associations

- component:TestComponent [0..*]
The set of test components belonging to the timezone.

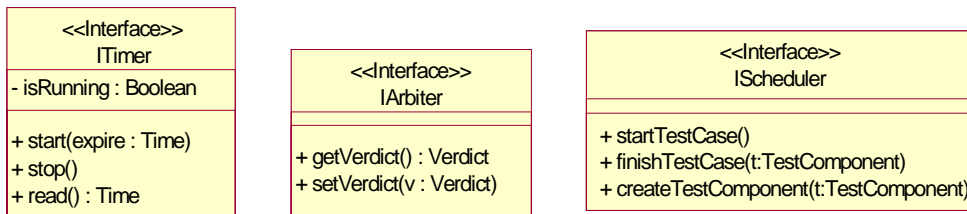


Figure C.4 - Predefined interfaces for implementing timer, arbiter and scheduler

Annex D – Scheduling

(normative)

D.1 Interface Definition

D.1.1 Scheduler

Description

Scheduler is a predefined interface defining operations used for controlling the tests and the test components. None of the operations of the Scheduler are available to the UML specifier.

Generalizations

None

Attributes

None

Operations

- Scheduler()
The constructor of Scheduler. It will start the SUT and the Arbiter.
- startTestCase()
The scheduler will start the test case by notifying all involved test components.
- finishTestCase(t:TestComponent)
Records that the test component t has finished its execution of this test case.
When all test components involved in the current test case have finished, the arbiter will be notified.
- createTestComponent(t:TestComponent)
Records that the test component t has been created by some other test component.

Semantics

The implementation of the predefined interface will determine the detailed semantics. The implementation must make sure that the scheduler has enough information to keep track of the existence and participation of the test components in every test case. The test context itself will ensure the creation of a scheduler.

Constraints

None

Notation

No additional notation for Scheduler is defined.

Examples

Example protocols for how the scheduler could work is found in Annex C.

D.1.2 Scheduler and Arbiter Protocol

This sub clause shows how the Scheduler and the Arbiter should work together with the test components and the SUT such that the execution of the test cases are performed properly and the verdict delivered at the right time. It is not necessary that a valid implementation conforms in detail to these sequence diagrams, but the net effect should be the same.

In the diagrams we have in addition to standard notation also applied a special kind of continuations that we have called synchronous continuations denoted by the prefixing “synch” keyword. This is a shorthand for introducing a number of general ordering relations such that all events above the synchronous continuation precedes all events below the synchronous continuation. This holds for all events on those lifelines that are covered by the continuation.

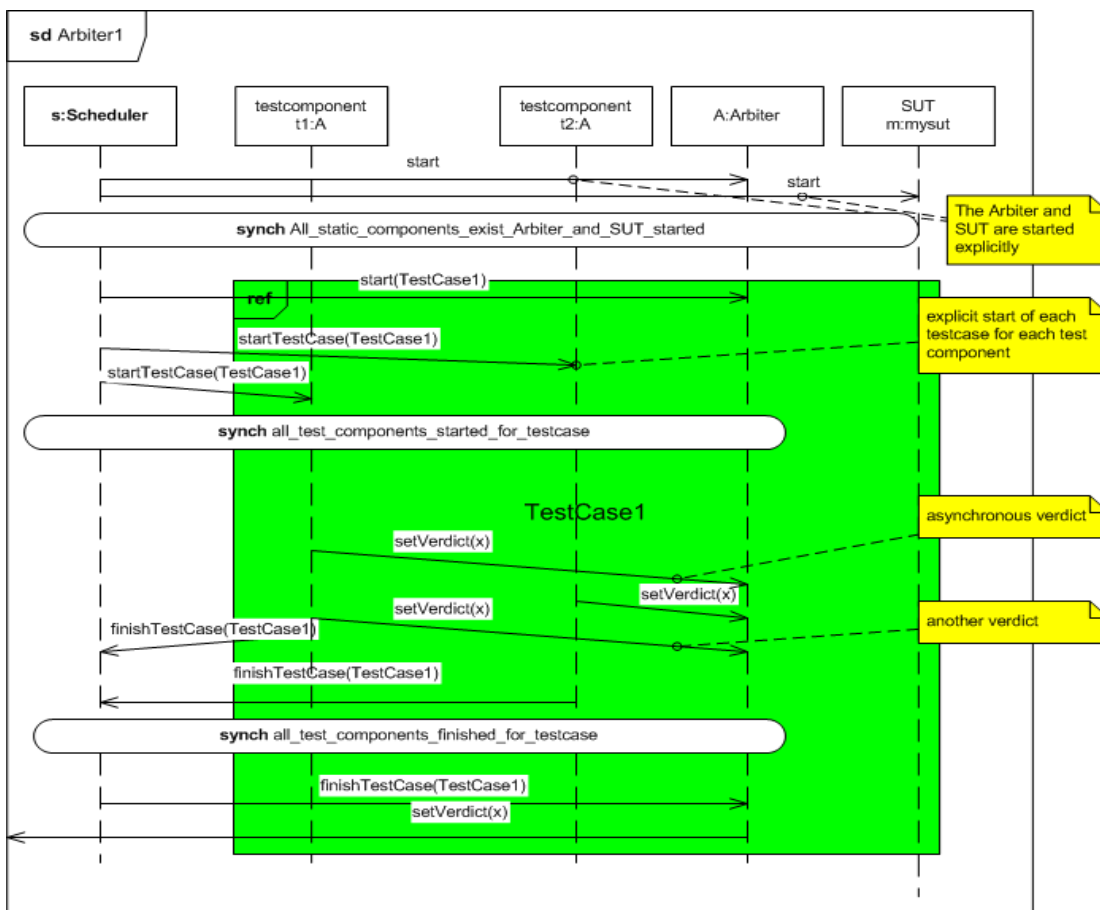


Figure D.1 - Scheduler/Arbiter protocol #1

The protocol scenario in Figure D.1 shows the normal situation when the test components are static. Notice that the Scheduler starts the SUT and the Arbiter explicitly before any test case can be started. When a test case is initiated the Scheduler will give notice to the test components that are involved in it. They will in turn notify the Scheduler when they are at the end of executing that test case. None of this is seen explicitly in the user specifications. Finally when the Scheduler has recorded that no test components have pending results, the Arbiter will be asked to produce the final verdict for the test case.

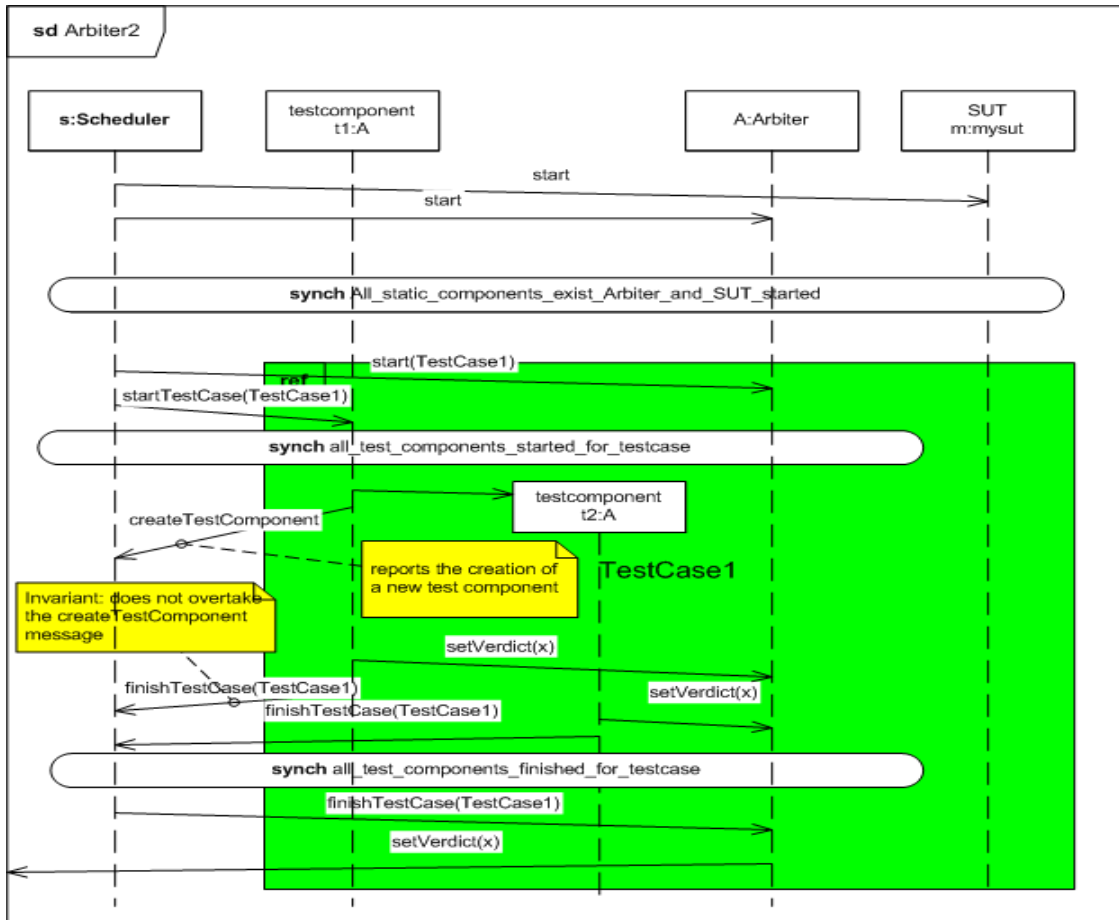


Figure D.2 - Scheduler/Arbiter protocol #2

The scenario in Figure D.2 shows what should happen when test components are created dynamically within the execution of the test case. The test component that creates another test component will notify the Scheduler about the creation. Notice that the later notification from that test component that it is finished with the test case must go along the same communication channel as the creation notification. This is to avoid possible race conditions between the creation notification and the finishing notifications. Such race condition would have made it theoretically possible to create a situation where the Scheduler knows about no pending test components, while the newly created test component is still running. The Arbiter could therefore have been instructed to give final verdict before it should.

In case of test component termination (destruction) this must also be notified to the Scheduler by the test component. It is assumed that the test component being destroyed is able to transmit its last verdict to the Arbiter before it is deleted.

In some test cases not all existing test components will take part. It is assumed that the Scheduler has proper information about this from its description of the test case such that it will not initiate more test components than necessary for a particular test case.

Annex E - XMI Schema

(normative)

E.1 The Profile

The XMI schema definition for the exchange of UTP profile specifications follows the XMI schema definition of UML 2.3 for UML 2.3 profiles. Please refer to the schema definition of UML 2.3.

E.2 The MOF-based Metamodel

The XMI schema definition for the MOF-based metamodel is given below.

```
<?xml version="1.0"?>
<xsd:schema targetNamespace="http://www.omg.org/UTPSA"
  xmlns:utp="http://www.omg.org/UTPSA"
  xmlns:xmi="http://www.omg.org/XMI" xmlns:xsd="http://www.w3.org/2001/XMLSchema">
  <xsd:import namespace="http://www.omg.org/XMI" schemaLocation="XMI.xsd"/>
  <xsd:simpleType name="Verdict">
    <xsd:restriction base="xsd:NCName">
      <xsd:enumeration value="pass"/>
      <xsd:enumeration value="fail"/>
      <xsd:enumeration value="inconclusive"/>
      <xsd:enumeration value="error"/>
    </xsd:restriction>
  </xsd:simpleType>
  <xsd:complexType name="Arbiter">
    <xsd:choice maxOccurs="unbounded" minOccurs="0">
      <xsd:element name="name" type="xsd:string"/>
      <xsd:element name="arbiterDefinition" type="xsd:string"/>
      <xsd:element name="behavior" type="utp:Behavior"/>
      <xsd:element ref="xmi:Extension"/>
    </xsd:choice>
    <xsd:attribute ref="xmi:id"/>
    <xsd:attributeGroup ref="xmi:ObjectAttribs"/>
    <xsd:attribute name="name" type="xsd:string"/>
    <xsd:attribute name="arbiterDefinition" type="xsd:string"/>
  </xsd:complexType>
  <xsd:element name="Arbiter" type="utp:Arbiter"/>
  <xsd:complexType name="Scheduler">
    <xsd:choice maxOccurs="unbounded" minOccurs="0">
      <xsd:element name="name" type="xsd:string"/>
      <xsd:element name="schedulerDefinition" type="xsd:string"/>
      <xsd:element name="behavior" type="utp:Behavior"/>
      <xsd:element ref="xmi:Extension"/>
    </xsd:choice>
```

```

        <xsd:attribute ref="xmi:id"/>
        <xsd:attributeGroup ref="xmi:ObjectAttribs"/>
        <xsd:attribute name="name" type="xsd:string"/>
        <xsd:attribute name="schedulerDefinition" type="xsd:string"/>
    </xsd:complexType>
    <xsd:element name="Scheduler" type="utp:Scheduler"/>
    <xsd:complexType name="Deployment">
        <xsd:choice maxOccurs="unbounded" minOccurs="0">
            <xsd:element name="name" type="xsd:string"/>
            <xsd:element name="deploymentDefinition" type="xsd:string"/>
            <xsd:element ref="xmi:Extension"/>
        </xsd:choice>
        <xsd:attribute ref="xmi:id"/>
        <xsd:attributeGroup ref="xmi:ObjectAttribs"/>
        <xsd:attribute name="name" type="xsd:string"/>
        <xsd:attribute name="deploymentDefinition" type="xsd:string"/>
    </xsd:complexType>
    <xsd:element name="Deployment" type="utp:Deployment"/>
    <xsd:complexType name="SUT">
        <xsd:choice maxOccurs="unbounded" minOccurs="0">
            <xsd:element name="name" type="xsd:string"/>
            <xsd:element name="SUTdefinition" type="xsd:string"/>
            <xsd:element ref="xmi:Extension"/>
        </xsd:choice>
        <xsd:attribute ref="xmi:id"/>
        <xsd:attributeGroup ref="xmi:ObjectAttribs"/>
        <xsd:attribute name="name" type="xsd:string"/>
        <xsd:attribute name="SUTdefinition" type="xsd:string"/>
    </xsd:complexType>
    <xsd:element name="SUT" type="utp:SUT"/>
    <xsd:complexType name="TestComponent">
        <xsd:choice maxOccurs="unbounded" minOccurs="0">
            <xsd:element name="name" type="xsd:string"/>
            <xsd:element name="testComponentDefinition" type="xsd:string"/>
            <xsd:element name="zone" type="xsd:string"/>
            <xsd:element name="behavior" type="utp:Behavior"/>
            <xsd:element name="dataPool" type="utp:DataPool"/>
            <xsd:element ref="xmi:Extension"/>
        </xsd:choice>
        <xsd:attribute ref="xmi:id"/>
        <xsd:attributeGroup ref="xmi:ObjectAttribs"/>
        <xsd:attribute name="name" type="xsd:string"/>
        <xsd:attribute name="testComponentDefinition" type="xsd:string"/>
        <xsd:attribute name="zone" type="xsd:string"/>
        <xsd:attribute name="dataPool" type="xsd:string"/>
    </xsd:complexType>
    <xsd:element name="TestComponent" type="utp:TestComponent"/>
    <xsd:complexType name="TestContext">
        <xsd:choice maxOccurs="unbounded" minOccurs="0">
            <xsd:element name="name" type="xsd:string"/>
            <xsd:element name="testContextDefinition" type="xsd:string"/>
        </xsd:choice>
    </xsd:complexType>

```



```

    <xsd:element name="sut" type="utp:SUT"/>
    <xsd:element name="component" type="utp:TestComponent"/>
    <xsd:element name="arbiter" type="utp:Arbiter"/>
    <xsd:element name="scheduler" type="utp:Scheduler"/>
    <xsd:element name="behavior" type="utp:Behavior"/>
    <xsd:element name="testConfiguration" type="utp:Deployment"/>
    <xsd:element name="testCase" type="utp:TestCase"/>
    <xsd:element name="executions" type="utp:TestLog"/>
    <xsd:element name="dataPool" type="utp:DataPool"/>
    <xsd:element ref="xmi:Extension"/>
  </xsd:choice>
  <xsd:attribute ref="xmi:id"/>
  <xsd:attributeGroup ref="xmi:ObjectAttribs"/>
  <xsd:attribute name="name" type="xsd:string"/>
  <xsd:attribute name="testContextDefinition" type="xsd:string"/>
  <xsd:attribute name="sut" type="xsd:string"/>
  <xsd:attribute name="component" type="xsd:string"/>
  <xsd:attribute name="arbiter" type="xsd:string"/>
  <xsd:element name="scheduler" type="utp:Scheduler"/>
  <xsd:attribute name="testConfiguration" type="xsd:string"/>
  <xsd:attribute name="executions" type="xsd:string"/>
  <xsd:attribute name="dataPool" type="xsd:string"/>
</xsd:complexType>
<xsd:element name="TestContext" type="utp:TestContext"/>
<xsd:complexType name="TestLog">
  <xsd:choice maxOccurs="unbounded" minOccurs="0">
    <xsd:element name="name" type="xsd:string"/>
    <xsd:element name="testLogDefinition" type="xsd:string"/>
    <xsd:element name="verdict" type="utp:Verdict"/>
    <xsd:element name="testConfiguration" type="utp:Deployment"/>
    <xsd:element ref="xmi:Extension"/>
  </xsd:choice>
  <xsd:attribute ref="xmi:id"/>
  <xsd:attributeGroup ref="xmi:ObjectAttribs"/>
  <xsd:attribute name="name" type="xsd:string"/>
  <xsd:attribute name="testLogDefinition" type="xsd:string"/>
  <xsd:attribute name="verdict" type="utp:Verdict"/>
  <xsd:attribute name="testConfiguration" type="xsd:string"/>
</xsd:complexType>
<xsd:element name="TestLog" type="utp:TestLog"/>
<xsd:complexType name="BaseDefault">
  <xsd:choice maxOccurs="unbounded" minOccurs="0">
    <xsd:element ref="xmi:Extension"/>
  </xsd:choice>
  <xsd:attribute ref="xmi:id"/>
  <xsd:attributeGroup ref="xmi:ObjectAttribs"/>
</xsd:complexType>
<xsd:element name="BaseDefault" type="utp:BaseDefault"/>
<xsd:complexType name="Behavior">
  <xsd:choice maxOccurs="unbounded" minOccurs="0">
    <xsd:element name="name" type="xsd:string"/>

```

```

        <xsd:element name="behaviorDefinition" type="xsd:string"/>
        <xsd:element ref="xmi:Extension"/>
    </xsd:choice>
    <xsd:attribute ref="xmi:id"/>
    <xsd:attributeGroup ref="xmi:ObjectAttribs"/>
    <xsd:attribute name="name" type="xsd:string"/>
    <xsd:attribute name="behaviorDefinition" type="xsd:string"/>
</xsd:complexType>
<xsd:element name="Behavior" type="utp:Behavior"/>
<xsd:complexType name="TestCase">
    <xsd:choice maxOccurs="unbounded" minOccurs="0">
        <xsd:element name="name" type="xsd:string"/>
        <xsd:element name="testCaseDefinition" type="xsd:string"/>
        <xsd:element name="behavior" type="utp:Behavior"/>
        <xsd:element name="executions" type="utp:TestLog"/>
        <xsd:element name="testObjective" type="utp:TestObjective"/>
        <xsd:element ref="xmi:Extension"/>
    </xsd:choice>
    <xsd:attribute ref="xmi:id"/>
    <xsd:attributeGroup ref="xmi:ObjectAttribs"/>
    <xsd:attribute name="name" type="xsd:string"/>
    <xsd:attribute name="testCaseDefinition" type="xsd:string"/>
    <xsd:attribute name="executions" type="xsd:string"/>
    <xsd:attribute name="testObjective" type="xsd:string"/>
</xsd:complexType>
<xsd:element name="TestCase" type="utp:TestCase"/>
<xsd:complexType name="TestObjective">
    <xsd:choice maxOccurs="unbounded" minOccurs="0">
        <xsd:element name="name" type="xsd:string"/>
        <xsd:element name="testObjectiveDefinition" type="xsd:string"/>
        <xsd:element ref="xmi:Extension"/>
    </xsd:choice>
    <xsd:attribute ref="xmi:id"/>
    <xsd:attributeGroup ref="xmi:ObjectAttribs"/>
    <xsd:attribute name="name" type="xsd:string"/>
    <xsd:attribute name="testObjectiveDefinition" type="xsd:string"/>
</xsd:complexType>
<xsd:element name="TestObjective" type="utp:TestObjective"/>
<xsd:complexType name="CodingRule">
    <xsd:choice maxOccurs="unbounded" minOccurs="0">
        <xsd:element name="coding" type="xsd:string"/>
        <xsd:element name="value" type="utp:InstanceValue"/>
        <xsd:element ref="xmi:Extension"/>
    </xsd:choice>
    <xsd:attribute ref="xmi:id"/>
    <xsd:attributeGroup ref="xmi:ObjectAttribs"/>
    <xsd:attribute name="coding" type="xsd:string"/>
    <xsd:attribute name="value" type="xsd:string"/>
</xsd:complexType>
<xsd:element name="CodingRule" type="utp:CodingRule"/>
<xsd:complexType name="InstanceValue">

```

```

<xsd:choice maxOccurs="unbounded" minOccurs="0">
  <xsd:element name="literalAny" type="utp:LiteralAny"/>
  <xsd:element name="literalAnyOrNull" type="utp:LiteralAnyOrNull"/>
  <xsd:element name="literalNull" type="utp:LiteralNull"/>
  <xsd:element name="coding" type="utp:CodingRule"/>
  <xsd:element ref="xmi:Extension"/>
</xsd:choice>
<xsd:attribute ref="xmi:id"/>
<xsd:attributeGroup ref="xmi:ObjectAttribs"/>
<xsd:attribute name="literalAny" type="xsd:string"/>
<xsd:attribute name="literalAnyOrNull" type="xsd:string"/>
<xsd:attribute name="literalNull" type="xsd:string"/>
<xsd:attribute name="coding" type="xsd:string"/>
</xsd:complexType>
<xsd:element name="InstanceValue" type="utp:InstanceValue"/>
<xsd:complexType name="LiteralAny">
  <xsd:choice maxOccurs="unbounded" minOccurs="0">
    <xsd:element name="value" type="utp:InstanceValue"/>
    <xsd:element ref="xmi:Extension"/>
  </xsd:choice>
  <xsd:attribute ref="xmi:id"/>
  <xsd:attributeGroup ref="xmi:ObjectAttribs"/>
  <xsd:attribute name="value" type="xsd:string"/>
</xsd:complexType>
<xsd:element name="LiteralAny" type="utp:LiteralAny"/>
<xsd:complexType name="LiteralAnyOrNull">
  <xsd:choice maxOccurs="unbounded" minOccurs="0">
    <xsd:element name="value" type="utp:InstanceValue"/>
    <xsd:element ref="xmi:Extension"/>
  </xsd:choice>
  <xsd:attribute ref="xmi:id"/>
  <xsd:attributeGroup ref="xmi:ObjectAttribs"/>
  <xsd:attribute name="value" type="xsd:string"/>
</xsd:complexType>
<xsd:element name="LiteralAnyOrNull" type="utp:LiteralAnyOrNull"/>
<xsd:complexType name="LiteralNull">
  <xsd:choice maxOccurs="unbounded" minOccurs="0">
    <xsd:element name="value" type="utp:InstanceValue"/>
    <xsd:element ref="xmi:Extension"/>
  </xsd:choice>
  <xsd:attribute ref="xmi:id"/>
  <xsd:attributeGroup ref="xmi:ObjectAttribs"/>
  <xsd:attribute name="value" type="xsd:string"/>
</xsd:complexType>
<xsd:element name="LiteralNull" type="utp:LiteralNull"/>
<xsd:complexType name="ITimer">
  <xsd:choice maxOccurs="unbounded" minOccurs="0">
    <xsd:element name="isRunning" type="xsd:boolean"/>
    <xsd:element ref="xmi:Extension"/>
  </xsd:choice>
  <xsd:attribute ref="xmi:id"/>

```

```

        <xsd:attributeGroup ref="xmi:ObjectAttribs"/>
        <xsd:attribute name="isRunning" type="xsd:boolean"/>
</xsd:complexType>
<xsd:element name="ITimer" type="utp:ITimer"/>
<xsd:complexType name="Timer">
    <xsd:choice maxOccurs="unbounded" minOccurs="0">
        <xsd:element ref="xmi:Extension"/>
    </xsd:choice>
    <xsd:attribute ref="xmi:id"/>
    <xsd:attributeGroup ref="xmi:ObjectAttribs"/>
</xsd:complexType>
<xsd:element name="Timer" type="utp:Timer"/>
<xsd:complexType name="IArbiter">
    <xsd:choice maxOccurs="unbounded" minOccurs="0">
        <xsd:element ref="xmi:Extension"/>
    </xsd:choice>
    <xsd:attribute ref="xmi:id"/>
    <xsd:attributeGroup ref="xmi:ObjectAttribs"/>
</xsd:complexType>
<xsd:element name="IArbiter" type="utp:IArbiter"/>
<xsd:complexType name="DataPool">
    <xsd:choice maxOccurs="unbounded" minOccurs="0">
        <xsd:element name="name" type="xsd:string"/>
        <xsd:element name="dataPoolDefinition" type="xsd:string"/>
        <xsd:element name="selector" type="utp:DataSelector"/>
        <xsd:element ref="xmi:Extension"/>
    </xsd:choice>
    <xsd:attribute ref="xmi:id"/>
    <xsd:attributeGroup ref="xmi:ObjectAttribs"/>
    <xsd:attribute name="name" type="xsd:string"/>
    <xsd:attribute name="dataPoolDefinition" type="xsd:string"/>
    <xsd:attribute name="selector" type="xsd:string"/>
</xsd:complexType>
<xsd:element name="DataPool" type="utp:DataPool"/>
<xsd:complexType name="DataSelector">
    <xsd:choice maxOccurs="unbounded" minOccurs="0">
        <xsd:element name="name" type="xsd:string"/>
        <xsd:element name="dataSelectorDefinition" type="xsd:string"/>
        <xsd:element ref="xmi:Extension"/>
    </xsd:choice>
    <xsd:attribute ref="xmi:id"/>
    <xsd:attributeGroup ref="xmi:ObjectAttribs"/>
    <xsd:attribute name="name" type="xsd:string"/>
    <xsd:attribute name="dataSelectorDefinition" type="xsd:string"/>
</xsd:complexType>
<xsd:element name="DataSelector" type="utp:DataSelector"/>
<xsd:complexType name="DataPartition">
    <xsd:choice maxOccurs="unbounded" minOccurs="0">
        <xsd:element name="name" type="xsd:string"/>
        <xsd:element name="dataPartitionDefinition" type="xsd:string"/>
        <xsd:element name="selector" type="utp:DataSelector"/>

```

```

        <xsd:element ref="xmi:Extension"/>
    </xsd:choice>
    <xsd:attribute ref="xmi:id"/>
    <xsd:attributeGroup ref="xmi:ObjectAttribs"/>
    <xsd:attribute name="name" type="xsd:string"/>
    <xsd:attribute name="dataPartitionDefinition" type="xsd:string"/>
    <xsd:attribute name="selector" type="xsd:string"/>
</xsd:complexType>
| <xsd:element name="DataPartition" type="utp:DataPartition"/>
<xsd:complexType name="IScheduler">
    <xsd:choice maxOccurs="unbounded" minOccurs="0">
        <xsd:element ref="xmi:Extension"/>
    </xsd:choice>
    <xsd:attribute ref="xmi:id"/>
    <xsd:attributeGroup ref="xmi:ObjectAttribs"/>
</xsd:complexType>
| <xsd:element name="IScheduler" type="utp:IScheduler"/>
</xsd:schema>

```


Annex F - Test Management Concepts

(non-normative)

F.1 General

This annex provides optional extensions to the UML Testing Profile to cope with test management requirements. The extensions for the stereotypes of the normative profile are optional. Only the concepts additional to the already defined concepts (in Clause 7) are listed in this section.

F.2 Abstract Syntax

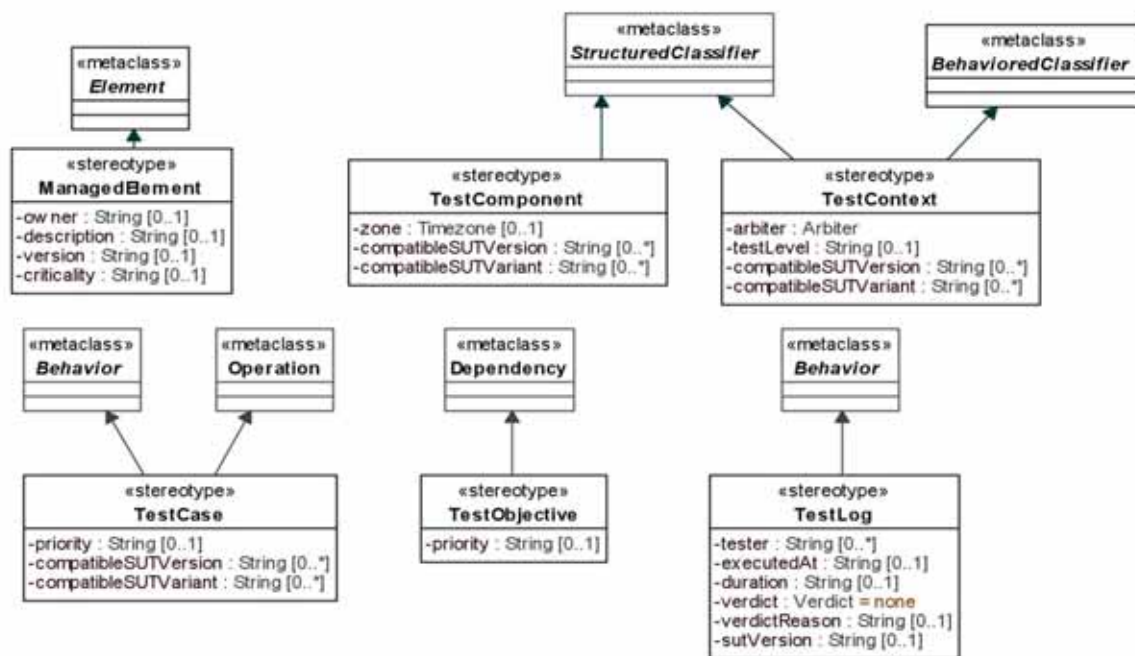


Figure F.1- Additional test management attributes

F.3 Stereotype Descriptions

F.3.1 ManagedElement

Description

A managed element provides additional project-, process- or any other meta-information to the element it is applied to.

Extensions

- Element (from UML::Kernel)

Generalizations

None

Attributes

- owner : String[0..1]
Identifies the owner which is responsible for this managed element.
- description : String [0..1]
Provides the capability to describe the managed element in a greater detail.
- version : String [0..1]
Information on the version of a managed element.
- criticality : String [0..1]
Information of the criticality of a managed element.

Semantics

Managed elements are often used in combination with other stereotypes, especially of the UML Testing Profile, to indicate the version or the owner of a particular test context, for example.

Constraints

None

Notation

No additional notation for «ManagedElement» defined.

Examples

None

F.3.2 TestComponent

Additional Attributes

- compatibeSUTVersion : String [0..*]
Information on which SUT versions the test component applies to / is compatible with.
- compatibeSUTVariant : String [0..*]
Information on which SUT variants the test component applies to / is compatible with. Used for test management regarding product variants.

F.3.3 TestContext

Additional Attributes

- testLevel : TestLevel [0..1]
Information on what part of a system a test context is aiming at.

- `compatibleSUTVersion` : String [0..*]
Information on which SUT versions the test context applies to / is compatible with.
- `compatibleSUTVariant` : String [0..*]
Information on which SUT variants the test context applies to / is compatible with. Used for test management regarding product variants.

F.3.4 TestCase

Additional Attributes

- `testLevel` : TestLevel [1]
Information on what part of a system a test case is aiming at.
- `priority` : String [0..1]
Comparable value, prioritizing the test case within the model used for test management regarding review, test design and test execution.
- `compatibleSUTVersion` : String [0..*]
Information on which SUT versions the test case applies to / is compatible with.
- `compatibleSUTVariant` : String [0..*]
Information on which SUT variants the test case applies to / is compatible with. Used for test management regarding product variants.

F.3.5 TestLog

Additional Attributes

- `tester` : String [0..*]
Identifies which persons have been involved in producing the test log.
- `executedAt` : String [0..1]
Provides information when the execution of the test case that produced this test log took place.
- `duration` : String [0..1]
Provides information how long the execution of the test case that produced this test log took place.
- `verdict` : Verdict [1]
The verdict created by the arbiter for the execution of a test cases that produced this test log.
- `verdictReason` : String [0..1]
The reason why a particular verdict was produced.
- `sutVersion` : String [0..1]
Information against what version of the SUT the test case that produced this test log was executed at.

F.3.6 TestObjective

Additional Attributes

- `priority` : String [0..1]
Comparable value, prioritizing the test objective within the model used for test management regarding review, test design, and test execution.

