

Date: September 2017



Languages, Countries and Codes (LCC™)

Version 1.0 – Beta 2

OMG Document Number: ptc/2017-09-05

Standard document URL: <http://www.omg.org/spec/LCC/1.0/>

Normative Machine Consumable File(s):

<http://www.omg.org/spec/LCC/Languages/LanguageRepresentation.rdf>
<http://www.omg.org/spec/LCC/20175084401/Languages/LanguageRepresentation.rdf>
<http://www.omg.org/spec/LCC/Languages/ISO639-1-LanguageCodes.rdf>
<http://www.omg.org/spec/LCC/20175084401/Languages/ISO639-1-LanguageCodes.rdf>
<http://www.omg.org/spec/LCC/Languages/ISO639-2-LanguageCodes.rdf>
<http://www.omg.org/spec/LCC/20175084401/Languages/ISO639-2-LanguageCodes.rdf>
<http://www.omg.org/spec/LCC/Countries/ISO3166-1-CountryCodes.rdf>
<http://www.omg.org/spec/LCC/20175084401/Countries/ISO3166-1-CountryCodes.rdf>
<http://www.omg.org/spec/LCC/Countries/ISO3166-2-SubdivisionCodes.rdf>
<http://www.omg.org/spec/LCC/20175084401/Countries/ISO3166-2-SubdivisionCodes.rdf>
<http://www.omg.org/spec/LCC/Countries/UN-M49-RegionCodes.rdf>
<http://www.omg.org/spec/LCC/20170801/Countries/UN-M49-RegionCodes.rdf>
<http://www.omg.org/spec/LCC/20175084401/Languages/LanguageRepresentation.xml>
<http://www.omg.org/spec/LCC/20175084401/Languages/LanguageRepresentation.xml>
<http://www.omg.org/spec/LCC/20175084401/Languages/ISO639-1-LanguageCodes.xml>
<http://www.omg.org/spec/LCC/20175084401/Languages/ISO639-2-LanguageCodes.xml>
<http://www.omg.org/spec/LCC/20175084401/Countries/CountryRepresentation.xml>
<http://www.omg.org/spec/LCC/20175084401/Countries/ISO3166-1-CountryCodes.xml>
<http://www.omg.org/spec/LCC/20175084401/Countries/ISO3166-2-SubdivisionCodes.xml>

<http://www.omg.org/spec/LCC/Countries/UN-M49-RegionCodes.xml>
<http://www.omg.org/spec/LCC/20170801/Countries/UN-M49-RegionCodes.xml>

<http://www.omg.org/spec/LCC/20175084401/Languages/LanguageRepresentation.xml>
<http://www.omg.org/spec/LCC/20175084401/Languages/ISO639-1-LanguageCodes.xml>
<http://www.omg.org/spec/LCC/20175084401/Languages/ISO639-2-LanguageCodes.xml>
<http://www.omg.org/spec/LCC/20175084401/Countries/CountryRepresentation.xml>
<http://www.omg.org/spec/LCC/20175084401/Countries/ISO3166-1-CountryCodes.xml>
<http://www.omg.org/spec/LCC/20175084401/Countries/ISO3166-2-SubdivisionCodes.xml>
<http://www.omg.org/spec/LCC/Countries/UN-M49-RegionCodes.xml>
<http://www.omg.org/spec/LCC/20170801/Countries/UN-M49-RegionCodes.xml>

[See Annex B for the list of normative ISO 3166-2 region-specific machine-readable files.](#)

Copyright © 2015-2017, Adaptive, Inc.
Copyright © 2015-2017, Thematrix Partners LLC
Copyright © 2015-2017, Unisys
Copyright © 2015-2017, Object Management Group, Inc.

USE OF SPECIFICATION – TERMS, CONDITIONS & NOTICES

The material in this document details an Object Management Group specification in accordance with the terms, conditions and notices set forth below. This document does not represent a commitment to implement any portion of this specification in any company's products. The information contained in this document is subject to change without notice.

LICENSES

The companies listed above have granted to the Object Management Group, Inc. (OMG) a nonexclusive, royalty-free, paid up, worldwide license to copy and distribute this document and to modify this document and distribute copies of the modified version. Each of the copyright holders listed above has agreed that no person shall be deemed to have infringed the copyright in the included material of any such copyright holder by reason of having used the specification set forth herein or having conformed any computer software to the specification.

Subject to all of the terms and conditions below, the owners of the copyright in this specification hereby grant you a fully-paid up, non-exclusive, nontransferable, perpetual, worldwide license (without the right to sublicense), to use this specification to create and distribute software and special purpose specifications that are based upon this specification, and to use, copy, and distribute this specification as provided under the Copyright Act; provided that: (1) both the copyright notice identified above and this permission notice appear on any copies of this specification; (2) the use of the specifications is for informational purposes and will not be copied or posted on any network computer or broadcast in any media and will not be otherwise resold or transferred for commercial purposes; and (3) no modifications are made to this specification. This limited permission automatically terminates without notice if you breach any of these terms or conditions. Upon termination, you will destroy immediately any copies of the specifications in your possession or control.

PATENTS

The attention of adopters is directed to the possibility that compliance with or adoption of OMG specifications may require use of an invention covered by patent rights. OMG shall not be responsible for identifying patents for which a license may be required by any OMG specification, or for conducting legal inquiries into the legal validity or scope of those patents that are brought to its attention. OMG specifications are prospective and advisory only. Prospective users are responsible for protecting themselves against liability for infringement of patents.

GENERAL USE RESTRICTIONS

Any unauthorized use of this specification may violate copyright laws, trademark laws, and communications regulations and statutes. This document contains information which is protected by copyright. All Rights Reserved. No part of this work covered by copyright herein may be reproduced or used in any form or by any means--graphic, electronic, or mechanical, including photocopying, recording, taping, or information storage and retrieval systems--without permission of the copyright owner.

DISCLAIMER OF WARRANTY

WHILE THIS PUBLICATION IS BELIEVED TO BE ACCURATE, IT IS PROVIDED "AS IS" AND MAY CONTAIN ERRORS OR MISPRINTS. THE OBJECT MANAGEMENT GROUP AND THE COMPANIES LISTED ABOVE MAKE NO WARRANTY OF ANY KIND, EXPRESS OR IMPLIED, WITH REGARD TO THIS PUBLICATION, INCLUDING BUT NOT LIMITED TO ANY WARRANTY OF TITLE OR OWNERSHIP, IMPLIED WARRANTY OF MERCHANTABILITY OR WARRANTY OF FITNESS FOR A PARTICULAR PURPOSE OR USE. IN NO EVENT SHALL THE OBJECT MANAGEMENT GROUP OR ANY OF THE COMPANIES LISTED ABOVE BE LIABLE FOR ERRORS CONTAINED HEREIN OR FOR DIRECT, INDIRECT, INCIDENTAL, SPECIAL, CONSEQUENTIAL, RELIANCE OR COVER DAMAGES, INCLUDING LOSS OF PROFITS, REVENUE, DATA OR USE, INCURRED BY ANY USER OR ANY THIRD PARTY IN CONNECTION WITH THE FURNISHING, PERFORMANCE, OR USE OF THIS MATERIAL, EVEN IF ADVISED OF THE POSSIBILITY OF SUCH DAMAGES.

The entire risk as to the quality and performance of software developed using this specification is borne by you. This disclaimer of warranty constitutes an essential part of the license granted to you to use this specification.

RESTRICTED RIGHTS LEGEND

Use, duplication or disclosure by the U.S. Government is subject to the restrictions set forth in subparagraph (c) (1) (ii) of The Rights in Technical Data and Computer Software Clause at DFARS 252.227-7013 or in subparagraph (c)(1) and (2) of the Commercial Computer Software - Restricted Rights clauses at 48 C.F.R. 52.227-19 or as specified in 48 C.F.R. 227-7202-2 of the DoD F.A.R. Supplement and its successors, or as specified in 48 C.F.R. 12.212 of the Federal Acquisition Regulations and its successors, as applicable. The specification copyright owners are as indicated above and may be contacted through the Object Management Group, 109 Highland Avenue, Needham, MA 02494, U.S.A.

TRADEMARKS

CORBA[®], CORBA logos[®], FIBO[®], Financial Industry Business Ontology[®], FINANCIAL INSTRUMENT GLOBAL IDENTIFIER[®], IIOP[®], IMM[®], Model Driven Architecture[®], MDA[®], Object Management Group[®], OMG[®], OMG Logo[®], SoaML[®], SOAML[®], SysML[®], UAF[®], Unified Modeling Language[®], UML[®], UML Cube Logo[®], VSIPL[®], and XMI[®] are registered trademarks of the Object Management Group, Inc.

For a complete list of trademarks, see: http://www.omg.org/legal/tm_list.htm. All other products or company names mentioned are used for identification purposes only, and may be trademarks of their respective owners.

COMPLIANCE

The copyright holders listed above acknowledge that the Object Management Group (acting itself or through its designees) is and shall at all times be the sole entity that may authorize developers, suppliers and sellers of computer software to use certification marks, trademarks or other special designations to indicate compliance with these materials.

Software developed under the terms of this license may claim compliance or conformance with this specification if and only if the software compliance is of a nature fully matching the applicable compliance points as stated in the specification. Software developed only partially matching the applicable compliance points may claim only that the software was based on this specification, but may not claim compliance or conformance with this specification. In the event that testing suites are implemented or approved by Object Management Group, Inc., software developed using this specification may claim compliance or conformance with the specification only if the software satisfactorily completes the testing suites.

OMG's Issue Reporting Procedure

All OMG specifications are subject to continuous review and improvement. As part of this process we encourage readers to report any ambiguities, inconsistencies, or inaccuracies they may find by completing the Issue Reporting Form listed on the main web page <http://www.omg.org>, under Documents, Report a Bug/Issue (<http://issues.omg.org/issues/create-new-issue>).

Table of Contents

1	Scope.....	1
1.1	Overview.....	1
1.2	Metadata.....	2
2	Conformance.....	3
3	Normative References.....	4
3.1	Normative References.....	4
3.2	Non-Normative References.....	6
4	Terms and Definitions.....	6
5	Symbols.....	7
5.1	Symbols.....	7
5.2	Abbreviations.....	7
6	Additional Information.....	8
6.1	Acknowledgments.....	8
6.2	Notation.....	8
7	Architecture.....	11
7.1	“About” the LCC Ontologies.....	11
7.2	Namespace Definitions.....	11
8	Language Ontologies.....	13
8.1	Overview.....	13
8.2	Module: Languages.....	13
8.3	Ontology: Language Representation.....	14
8.4	Ontology: ISO 639-1 Language Codes.....	30
8.5	Ontology: ISO 639-2 Language Codes.....	30
9	Country Ontologies.....	33
9.1	Overview.....	33
9.2	Module: Countries.....	33
9.3	Ontology: Country Representation.....	34
9.4	Ontology: ISO 3166-1 Country Codes.....	46
9.5	Ontology: ISO 3166-2 Subdivision Codes.....	47
9.6	Ontology: Standard Country or Area Codes for Statistical Use (M49).....	48
Annex A:	Deliverables.....	49
Annex B:	ISO 3166-2 Regions.....	51
Annex C:	Generating Ontologies from External Code Definitions.....	65

Preface

OMG

Founded in 1989, the Object Management Group, Inc. (OMG) is an open membership, not-for-profit computer industry standards consortium that produces and maintains computer industry specifications for interoperable, portable, and reusable enterprise applications in distributed, heterogeneous environments. Membership includes Information Technology vendors, end users, government agencies, and academia.

OMG member companies write, adopt, and maintain its specifications following a mature, open process. OMG's specifications implement the Model Driven Architecture[®] (MDA[®]), maximizing ROI through a full-lifecycle approach to enterprise integration that covers multiple operating systems, programming languages, middleware and networking infrastructures, and software development environments. OMG's specifications include: UML[®] (Unified Modeling Language[®]); CORBA[®] (Common Object Request Broker Architecture); CWM[™] (Common Warehouse Metamodel[™]); and industry-specific standards for dozens of vertical markets.

More information on the OMG is available at <http://www.omg.org/>.

OMG Specifications

As noted, OMG specifications address middleware, modeling and vertical domain frameworks. All OMG Specifications are available from the OMG website at:

<http://www.omg.org/spec>

Specifications are organized by the following categories:

Business Modeling Specifications

Middleware Specifications

- CORBA/IIOP
- Data Distribution Services
- Specialized CORBA

IDL/Language Mapping Specifications

Modeling and Metadata Specifications

- UML, MOF, CWM, XMI
- UML Profiles

Modernization Specifications

Platform Independent Model (PIM), Platform Specific Model (PSM), Interface Specifications

- CORBAServices
- CORBAFacilities

OMG Domain Specifications

CORBA Embedded Intelligence Specifications

CORBA Security Specifications

Signal and Image Processing Specifications

All of OMG's formal specifications may be downloaded without charge from our website. (Products implementing OMG specifications are available from individual suppliers.) Copies of specifications, available in PostScript and PDF format, may be obtained from the Specifications Catalog cited above or by contacting the Object Management Group, Inc. at:

OMG Headquarters
109 Highland Avenue
Needham, MA 02494
USA

Tel: +1-781-444-0404
Fax: +1-781-444-0320
Email: pubs@omg.org

Certain OMG specifications are also available as ISO standards. Please consult <http://www.iso.org>

Typographical Conventions

The type styles shown below are used in this document to distinguish programming statements from ordinary English. However, these conventions are not used in tables or section headings where no distinction is necessary.

Times/Times New Roman/Liberation Serif – 10 pt.: Standard body text

Helvetica/Arial – 10 pt. Bold: OMG Interface Definition Language (OMG IDL) and syntax elements.

Courier – 10 pt. Bold: Programming language elements.

Helvetica/Arial – 10 pt: Exceptions

NOTE: Terms that appear in italics are defined in the glossary. Italic text also represents the name of a document, specification, or other publication.

Issues

The reader is encouraged to report any technical or editing issues/problems with this specification via the report form at:

<http://issues.omg.org/issues/create-new-issue>

This page intentionally left blank.

1 Scope

Issue LCC-4 – generalize coverage with respect to scope outside of ISO 3166

The Languages, Countries, and Codes Specification provides a standard set of ontologies for two ISO standards: (1) ISO 639: Codes for the representation of language names, and (2) ISO 3166: Codes for the representation of country names and their subdivisions. The Languages, Countries, and Codes (LCC) Specification provides metamodels, in the form of ontologies, and several models files that consist of individuals defined by those metamodels, representing commonly used codes for the representation of languages and regions, including countries and their subdivisions. While most organizations recognize the ISO 639 standard as the primary source for definition of languages world-wide, and many organizations use the country codes contained in ISO 3166, most governments maintain their own extensions and modifications to the ISO 3166 codes for political and other purposes. Many also reference the United Nations Standard country or area codes for statistical use (M49) together with ISO 3166 as the basis for managing and interpreting regional statistical information. In response to this need and given that the ISO and U.N. codes have not been published by those organizations as RDF vocabularies to date, the OMG LCC standard is designed to fill the gap. It supports the ISO standard language and country codes, the UN M49 region codes, and enables development of other sets of codes using a standard vocabulary and ontology for languages, regions, and countries that users might require.

These ontologies are essential for many government, commercial, and academic applications and ontology development activities, ranging from business vocabularies, taxonomies, and nomenclatures, to semantically rich applications, and at OMG, they are required to support the Financial Industry Business Ontology (FIBO) family of standards, among others.

This specification provides ODM-compliant UML reference models for both ISO specifications, including ODM XMI, ODM-compliant UML XMI, and RDF/OWL serialized in both RDF/XML and Turtle, to provide maximum flexibility and coverage for implementers and other users.

This initial version of the specification covers the first two parts of ISO 639 and the first two parts of ISO 3166 (North America only with respect to ISO 3166-2). Future revisions of this specification will extend coverage to other parts of these standards, however, as needed/requested by the OMG community.

1.1 Overview

The Languages, Countries and Codes (LCC) specification includes two modules:

(1) Languages, which includes three ontologies:

- Language Representation, which provides the concepts and relationships that correspond to all six parts of ISO 639 and are derived from ISO 639-1;
- ISO 639-1 Language Codes, which covers the two character digraphs (codes) representing the 180+ languages that are most commonly used in terminology, lexicography, and linguistics, and
- ISO 639-2, which provides the three character trigraphs (codes) for all of the languages specified in ISO 639-1 as well as additional languages and language groups that are relatively commonly used.

(2) Countries, which includes ~~three ontologies~~ the following:

- Country Representation, which provides the concepts and relationships ~~that correspond to all three parts of ISO 3166;~~ defining geographic regions, geopolitical entities, countries, subdivisions, high-level relationships between them, and related coding systems;

- ISO 3166-1 Country Codes, which covers the two and three character country codes representing the almost 250 countries, territories, and other entities that are recognized by the United Nations, and
- ISO 3166-2 Subdivision Codes, which provides composite (country + subdivision) codes and subdivision definitions for all of the entities covered by ISO 3166-1.

~~Note that this initial version of the LCC specification only covers subdivision codes for North America (i.e., states, districts, territories, and provinces of Canada, the United States, and Mexico), based on requirements for other OMG specifications including the Financial Industry Business Ontology (FIBO). Other subdivision codes can be added by implementers as needed until such time as they are incorporated into a revision of the standard. Similarly, coverage of the other parts of ISO 639, including ISO 639-3, which provides comprehensive coverage of every known individual language spoken around the world, including many historical and extinct languages, ISO 639-5, which includes language families and groups, and ISO 639-6, which addresses language variants, may be added as requirements for these codes arise.~~

1.2 Metadata

Annotations on concepts, properties, and individuals in this specification follow the general policies recommended by the OMG Architecture Board, including the use of (1) the Dublin Core Metadata Terms¹, (2) the Simple Knowledge Organization System (SKOS)², and (3) the OMG's Specification Metadata³. In general, every element in the ontologies must have a definition, and in many cases in the Language Representation and Country Representation ontologies, the source section of the relevant standard is referenced.

¹ See <http://www.dublincore.org/documents/dcmi-terms/> for more information about the Dublin Core and DCMI

² See <http://www.w3.org/2004/02/skos/> for more information about the Simple Knowledge Organization System (SKOS)

³ The AB Recommendation for Specification Metadata is available at <http://www.omg.org/techprocess/ab/SpecificationMetadata.rdf>.

2 Conformance

The Languages, Countries, and Codes (LCC) specification provides a number of possible conformance points for implementers. These fall into the following categories:

- (1) Specification-level conformance with the RDF/OWL ontologies, which means that the subject application formally imports (*i.e.*, through `owl:imports` statements in another ontology or via loading the full set of ontologies for reference in a knowledge base that supports RDF/OWL);
- (2) Ontology-level conformance – which means that the subject application formally imports one or more of the LCC ontologies but may not import all of them;
- (3) Linked Data-level conformance – which means that the subject application references, but may not formally import, one or more of the LCC ontologies;
- (4) UML Model-level conformance – which means that the subject application reuses either the ODM XMI or UML XMI models that make up the LCC specification, for example, to use the reference language or country codes in another UML model (including, but not limited to an ODM-compliant model).

These should be considered independent conformance points, although applications providing specification-level conformance will, by definition, also support ontology- and linked data-level conformance. Applications providing ontology-level conformance will, by definition, have linked data-level conformance.

In all four (4) cases, implementers may extend any of the LCC ontologies as necessary, to add language or country codes required between releases, or to add application-specific codes needed to address various requirements. Typically such extensions will entail ontology-level conformance. We encourage implementers to submit any requirements for extension to the relevant LCC task force, as appropriate.

Note that ontology-level conformance implies that there is a list of LCC ontologies that have been imported into the conforming application, tool, or ontology. Implementers are required to provide that list with their conformance statements, including the appropriate `owl:versionIRI` for each of the LCC ontologies they support.

3 Normative References

3.1 Normative References

Note that for the ISO specifications listed herein, in cases where there are registration authorities (RA) for the codes, the latest version as of the `owl:versionIRI` in the ontology metadata has been used for development of this specification. The latest version published by the relevant RA is more recent than what has been published by ISO in all cases. The task force intends that subsequent revisions of this specification should be maintained in such a way as to be current with respect to the codes published by the appropriate RA to the degree possible.

<i>Reference</i>	<i>Description</i>
[Dublin Core]	DCMI Metadata Terms, Issued 2013-06-14 by the Dublin Core Metadata Initiative. Available at http://www.dublincore.org/documents/dcmi-terms/ .
[ISO 639-1]	ISO 639-1:2002 Codes for the representation of names of languages – Part 1: Alpha-2 code
[ISO 639-2]	ISO 639-2:1998 Codes for the representation of names of languages – Part 2: Alpha-3 code
[ISO 639-3]	ISO 639-3:2007 Codes for the representation of names of languages – Part 3: Alpha-3 code for comprehensive coverage of languages
[ISO 639-4]	ISO 639-4:2010 Codes for the representation of names of languages – Part 4: General principles of coding of the representation of names of languages and related entities, and application guidelines
[ISO 639-5]	ISO 639-5:2008 Codes for the representation of names of languages – Part 5: Alpha-3 code for language families and groups
[ISO 639-6]	ISO 639-6:2009 Codes for the representation of names of languages – Part 6: Alpha-4 code for comprehensive coverage of language variants
[ISO 704]	ISO 704:2000 Terminology Work – Principles and Methods
[ISO 1087]	ISO 1087-1:2000 Terminology – Vocabulary – Part 1: Theory and application
[ISO 3166-1]	ISO 3166-1:2013 Codes for the representation of names of countries and their subdivisions – Part 1: Country codes
[ISO 3166-2]	ISO 3166-2:2013 Codes for the representation of names of countries and their subdivisions – Part 2: Country subdivision code
[ISO 3166-3]	ISO 3166-3:2013 Codes for the representation of names of countries and their subdivisions – Part 3:

	Code for formerly used names of countries
[MOF Core]	Meta Object Facility (MOF™) Core. Available at http://www.omg.org/spec/MOF/
[MOF XMI]	MOF 2/XMI (XML Metadata Interchange) Mapping Specification. Available at http://www.omg.org/spec/XMI/
[ODM]	Ontology Definition Metamodel (ODM. Available at http://www.omg.org/spec/ODM/
[OMG AB Specification Metadata]	OMG Architecture Board recommendations for specification of ontology metadata, Available at http://www.omg.org/techprocess/ab/SpecificationMetadata.rdf
[OWL 2]	OWL 2 Web Ontology Language Quick Reference Guide (Second Edition), W3C Recommendation 11 December 2012. Available at http://www.w3.org/TR/2012/REC-owl2-quick-reference-20121211/ .
[RDF Concepts]	RDF 1.1 Concepts and Abstract Syntax. Richard Cyganiak, David Wood and Markus Lanthaler, Editors. W3C Recommendation, 25 February 2014. Available at http://www.w3.org/TR/rdf11-concepts/
[RDF Schema]	RDF Schema 1.1. Dan Brickley and R.V. Guha, Editors. W3C Recommendation, 25 February 2014. Available at http://www.w3.org/TR/rdf-schema/ .
[SKOS]	SKOS Simple Knowledge Organization System Reference, W3C Recommendation 18 August 2009. Available at http://www.w3.org/TR/2009/REC-skos-reference-20090818/ .
[UML2]	Unified Modeling Language™ (UML®). Available at http://www.omg.org/spec/UML/
[Unicode]	<i>The Unicode Standard, Version 3</i> , The Unicode Consortium, Addison-Wesley, 2000. ISBN 0-201-61633-5, as updated from time to time by the publication of new versions. (See http://www.unicode.org/unicode/standard/versions/ for the latest version and additional information on versions of the standard and of the Unicode Character Database).
[UTF-8]	RFC 3629: UTF-8, a transformation format of ISO 10646. F. Yergeau. IETF, November 2003, http://www.ietf.org/rfc/rfc3629.txt
[W3C Datatypes in RDF and OWL]	XML Schema Datatypes in RDF and OWL, W3C Working Group Note 14 March 2006, Available at http://www.w3.org/TR/2006/NOTE-swbp-xsch-datatypes-20060314/ .
[XML Schema Datatypes]	XML Schema Part 2: Datatypes. W3C Recommendation 28 October 2004. Available at http://www.w3.org/TR/xmlschema-2/ .

3.2 Non-Normative References

The following informative documents are referenced in this specification:

Reference	Description
-----------	-------------

[BCP 47]	BCP 47, Tags for Identifying Languages, see http://tools.ietf.org/html/bcp47
[DL Handbook]	THE DESCRIPTION LOGIC HANDBOOK: Theory, implementation, and applications. Baader, McGuinness, Nardi, and Patel-Schneider, editors. Cambridge University Press, Cambridge, United Kingdom, 2003.

4 Terms and Definitions

For the purposes of this specification, the following terms and definitions apply. See sections 8 and 9 in this specification for more detailed definitions of several of the terms listed below.

Issue LCC-4 – generalize definitions with respect to ISO 3166

Term	Definition
Country	a geopolitical entity representing a country with referenees for specific code elements that denote it in the context of ISO 3166 or dependent territory
<u>CountrySubdivision</u>	<u>a geopolitical entity, typically a division of a country, dependency, or other area of special geopolitical interest related to a country or other geopolitical entity</u>
<u>GeographicRegionCountryIdentifier</u>	similar to the language identifier specified in ISO 639 , a string of letters assigned to a country or other geopolitical entity name specified in ISO 3166-1 region for the purpose of uniquely representing it
Language	a systematic use of sounds, characters, symbols or signs to communicate meaning
LanguageIdentifier	a string of characters that uniquely identifies a linguistic entity
Ontology	An ontology specifies a rich description of the <ul style="list-style-type: none"> • Terminology, concepts, nomenclature • Relationships among and between concepts and individuals • Sentences distinguishing concepts, refining definitions and relationships (constraints, restrictions, regular expressions) relevant to a particular domain or area of interest⁴.

⁴ Kendall, Elisa and McGuinness, Deborah: “Ontology 101: An Introduction to Knowledge Representation & Ontology Development”, Tutorial given at Smart Data 2015, August 18th, 2015, San Jose, CA.

5 Symbols

5.1 Symbols

There are no symbols introduced by this specification.

5.2 Abbreviations

The following abbreviations are used throughout this specification:

IRI – Internationalized (Uniform) Resource Identifier

LCC – Languages, Countries and Codes

OWL – Web Ontology Language

ODM – Ontology Definition Metamodel

RDF – Resource Definition Framework

UML – Unified Modeling Language

URI – Uniform Resource Identifier

URL – Uniform Resource Locator

XMI – XML Metadata Interchange

XML – eXtensible Markup Language

6 Additional Information

6.1 Acknowledgments

The following organization submitted this specification:

- Adaptive, Inc.
- Thematix Partners LLC
- Unisys

The following companies and organizations are strong supporters of this specification:

- EDM Council

6.2 Notation

The diagrams included herein are ODM-compliant UML diagrams, in other words, they conform to the UML Profiles for RDF and OWL specified in the OMG's Ontology Definition Metamodel [ODM] Specification. This includes the set of UML stereotypes and graphical notation used in the diagrams provided.

The color scheme employed in these diagrams includes:

- Basic OWL Classes: white for classes defined within the current (local) ontology, amber for classes defined within an imported (referenced) ontology
- OWL Restriction Classes and other Class Expressions (unions, intersection, complements): green
- OWL Object Properties: blue
- OWL Data Properties: dark gray
- OWL Datatypes: pink
- OWL Individuals: light gray

These colors are provided for clarification purposes only, and are non-normative.

Within the context of this, a module is a group of ontologies, organized as a subdomain with respect to the LCC namespace and as a folder from a file management perspective. Several ontologies are contained in each of the two modules in this specification, which include Languages and Countries. For each module there is an "about" file, which provides metadata about the module, specified herein in tabular form. Each of the primary ontologies in a given module is defined as an ODM-compliant UML model as well as in OWL (aside from the "about" file, which is expressed in RDF/OWL, RDF/XML and Turtle serializations only). The normative ontology is expressed in ODM XMI (*i.e.*, XMI that conforms to the ODM metamodels for RDF and OWL), ODM UML XMI (*i.e.*, that conforms to the UML Profiles for RDF and OWL in the ODM specification), and in RDF/XML serialized OWL 2.

The notation used to represent description logic expressions (*i.e.*, the expressions in the Parent columns in class tables containing ontology details) is consistent with the notation defined in the Description Logic Handbook [DL Handbook]. Some of the basics are described in Table 6-1, below. Note that this is not intended to be comprehensive, but includes the primary patterns that are used in the LCC specification, for property restrictions in particular.

Table 6-1 Description Logic Expressions Notation

Construct	Description	Notation
Boolean Connectives and Enumeration		
intersection	The intersection of two classes consists of exactly those individuals which are instances of both classes.	$C \cap D$
union	The union of two classes contains every individual which is contained in at least one of these classes.	$C \cup D$
enumeration	An enumeration defines a class by enumerating all its instances.	$\text{oneOf}(i_1, i_2, i_3, \dots, i_n)$
Property Restrictions		
universal quantification	Universal quantification is used to specify a class of individuals for which all related individuals must be instances of a given class (<i>i.e.</i> , <code>allValuesFrom</code> in OWL).	$\forall R.C$, where R is the relation (property) and C is the class that constrains all values for related individuals
existential quantification	Existential quantification is used to specify a class as the set of all individuals that are connected via a particular property to at least one individual which is an instance of a certain class (<i>i.e.</i> , <code>someValuesFrom</code> in OWL).	$\exists R.C$, where R is the relation (property) and C is the class that constrains some values of related individuals
individual value	Individual value restrictions are used to specify classes of individuals that are related to one particular individual (<i>i.e.</i> , <code>hasValue</code> in OWL).	$\forall R.I$, where R is the relation (property) and I is the individual
exact cardinality	Cardinality (number) restrictions specify classes by restricting the cardinality on the sets of fillers for roles (relationships, or properties in OWL). Exact cardinality restrictions restrict the cardinality of possible fillers to exactly the number specified.	$= n R$ (for unqualified restrictions) $= n R.C$ (for qualified restrictions, <i>i.e.</i> , including <code>onClass</code> or <code>onDataRange</code>)
maximum cardinality	Maximum cardinality restrictions restrict the cardinality of possible fillers to at most the number specified (inclusive).	$\leq n R$ (for unqualified restrictions) $\leq n R.C$ (for qualified restrictions)
minimum cardinality	Minimum cardinality restrictions restrict the cardinality of possible fillers to at least the number specified (inclusive).	$\geq n R$ (for unqualified restrictions) $\geq n R.C$ (for qualified restrictions)
Class Axioms		
equivalent classes	Two classes are considered equivalent if they contain exactly the same individuals.	$\equiv C$
disjoint classes	Disjointness means that membership in one class specifically excludes membership in another.	$\neg C$

Within the tabular representation for restrictions in the tables included herein, the identifiers for the restrictions shown in the diagrams are included parenthetically following the logic expressions. These are not part of the logic, but are included for comparison purposes. The identifiers are named based on the precedent set in the FIBO specifications,

which includes the namespace prefix for the ontology followed by a unique number, and are unique within the context of an individual ontology only.

Additionally, some restrictions are nested, whereby the content of an embedded (nested) restriction is also included parenthetically. In these cases, all of the identifiers will be included, also parenthetically, following the complete specification of the complex restriction. Note too that in the case of complex restrictions, where there are nested elements in parentheses, the “dot notation” used as a separator between a property and the role filler is replaced with the embedded parenthetical filler definition. A “role” from a description logic perspective is essentially a property in OWL, and the role “filler” is the class or individual that provides the value for that role in a given axiom (*i.e.* in a restriction or other logic expression).

The majority of the property restrictions specified in LCC are defined as necessary conditions for class membership, rather than sufficient conditions. As a result, the tables assume that necessary conditions is the default and only in cases where a restriction imposes sufficient conditions will that be stated.

7 Architecture

7.1 “About” the LCC Ontologies

[Issue LCC-11 – add about regions](#)

The “about” files for LCC provide content describing the specification and each of the modules, complementing the content in this specification and in some cases duplicating it in the form of RDF/OWL metadata. These files are designed to (1) describe the machine-readable content of the specification for people who download that content directly, via content negotiations, and import it into tools that can interpret and display those files, (2) for potential use in tagging the specification document on the OMG site, and (3) to provide [a high-level ontology in the case of AboutLCC-1.0.rdf that imports all of the constituent ontologies for ease of use. high-level ontologies including AboutLCC-1.0.rdf and AboutLCC-1.0-Regions.rdf that import all of the constituent ontologies for ease of use \(similar to “make files” for software\).](#)

7.2 Namespace Definitions

The namespaces and prefixes corresponding to external elements required for use in LCC are provided. Table 7-1 lists the prefixes and namespaces on which LCC depends that are external to LCC. Table 7-2 provides the namespace declarations required for use of LCC itself. The prefixes provided in Tables 7-1 and 7-2 are normative, and their use is required in any conformant extension.

Table 7-1 Prefix and Namespaces for referenced/external vocabularies

Namespace Prefix	Namespace
rdf	http://www.w3.org/1999/02/22-rdf-syntax-ns#
rdfs	http://www.w3.org/2000/01/rdf-schema#
owl	http://www.w3.org/2002/07/owl#
xsd	http://www.w3.org/2001/XMLSchema#
dct	http://purl.org/dc/terms/
skos	http://www.w3.org/2004/02/skos/core#
sm	http://www.omg.org/techprocess/ab/SpecificationMetadata/

The namespace approach taken for LCC is based on OMG guidelines and is constructed as follows:

- A standard prefix <http://www.omg.org/spec/>
- The abbreviation for the specification: in this case LCC
- The ontology name (including the module)

Note that the URI/IRI strategy for the ontologies in LCC takes a “slash” rather than “hash” approach, in order to accommodate server-side applications. Namespace prefixes are constructed as follows with the components separated by “-“:

- The specification abbreviation: lcc

- An abbreviation for the ontology name

The namespaces and prefixes corresponding for the Languages, Countries, and Codes ontologies are summarized in Table 7-2. These are given by module, and within a module in alphabetical order, rather than with any intent to show imports relationships. The table includes the namespace definitions for the “about” files that are part of the machine-readable deliverables for the specification, but that are not required for imports closure. Note that these are not versioned, although version IRIs are included in every OWL ontology and are documented in the metadata for each of them.

[Issue LCC-11 – add about regions](#)

[Issue LCC-16 – add M49 codes](#)

Table 7-2 Prefix and Namespaces for Languages, Countries and Codes (LCC)

Namespace Prefix	Namespace
lcc-spc	http://www.omg.org/spec/LCC/AboutLCC/
lcc-spc-1.0	http://www.omg.org/spec/LCC/1.0/AboutLCC-1.0/
lcc-spc-1.0-reg	http://www.omg.org/spec/LCC/1.0/AboutLCC-1.0-Regions/
lcc-lng	http://www.omg.org/spec/LCC/Languages/AboutLanguages/
lcc-lr	http://www.omg.org/spec/LCC/Languages/LanguageRepresentation/
lcc-639-1	http://www.omg.org/spec/LCC/Languages/ISO639-1-LanguageCodes/
lcc-639-2	http://www.omg.org/spec/LCC/Languages/ISO639-2-LanguageCodes/
lcc-cty	http://www.omg.org/spec/LCC/Countries/AboutCountries/
lcc-cr	http://www.omg.org/spec/LCC/Countries/CountryRepresentation/
lcc-3166-1	http://www.omg.org/spec/LCC/Countries/ISO3166-1-CountryCodes/
lcc-3166-2	http://www.omg.org/spec/LCC/Countries/ISO3166-2-SubdivisionCodes/
lcc-m49	http://www.omg.org/spec/LCC/Countries/UN-M49-RegionCodes/

[Issue LCC-11 – add statement regarding regional namespaces](#)

[Individual namespace prefixes for the ISO 3166-2 region codes are formulated as “lcc-3166-2-<xx>”, where <xx> is a two-character, lower case code corresponding to the ISO 3166-1 alpha 2 code for the country whose regions are represented therein. Individual namespaces for the ISO 3166-2 region codes are formulated as <http://www.omg.org/spec/LCC/Countries/Regions/ISO3166-2-SubdivisionCodes-<XX>>, where <XX> is a two-character, upper case code corresponding to the ISO 3166-1 alpha 2 code for the country whose regions are represented therein. See Annex B for a complete list of the namespaces and corresponding countries for which region codes are available.](#)

8 Language Ontologies

8.1 Overview

This section defines the terms, definitions, relationships, and additional logic specified in the ontologies that make up the Languages Module.

8.2 Module: Languages

The Languages module includes three primary ontologies, as well as an “about” file, namely:

- Language Representation, which provides the concepts and relationships that correspond to all six parts of ISO 639 and are derived primarily from ISO 630-4;
- ISO 639-1 Language Codes, which covers the two character digraphs (codes) representing the 180+ languages that are most commonly used in terminology, lexicography, and linguistics, and
- ISO 639-2, which provides the three character trigraphs (codes) for all of the languages specified in ISO 639-1 as well as additional languages and language groups that are relatively commonly used.

Metadata contained in the “about” file that describes the module is given in Table 8-1.

[Issue LCC-32 – update metadata](#)

Table 8-1 Languages Module Metadata

Metadata Term	Value
sm:filename	AboutLanguages.rdf
sm:fileAbbreviation	lcc-lng
OntologyIRI	http://www.omg.org/spec/LCC/Languages/AboutLanguages/
owl:versionIRI	http://www.omg.org/spec/LCC/20175081101/Languages/AboutLanguages/
sm:moduleName	Languages
sm:moduleAbbreviation	LCC-LNG
sm:moduleVersion	1.0
sm:moduleAbstract	This module contains ontologies representing languages commonly used in business, including human and machine-interpretable languages. The main body of the module is based on ISO 639 as well as the language element of the Language Tag specified in BCP 47 (RFC 4646, RFC 4647), to provide a systematic description of the vocabulary used for language representation, including natural and artificial languages.

8.3 Ontology: Language Representation

This ontology, based on ISO 639 as well as the language element of the Language Tag specified in BCP 47 (RFC 4646, RFC 4647), provides a systemic description of the vocabulary used for language representation, including natural and artificial languages.

ISO 639 provides two language codes, one as a two-letter code (ISO 639-1) and another as a three-letter code (ISO 639-2, ISO 639-3, ISO 639-5) for the representation of names of languages. ISO 639-1 was devised primarily for use in terminology, lexicography, and linguistics. ISO 639-2 represents all of the languages contained in ISO 639-1, additional languages and language groups, as they may be coded for special purposes when more specificity in coding is needed. The languages listed in ISO 639-1 are a subset of the languages listed in ISO 639-2; every language code element in the two-letter code has a corresponding language code element in the three-letter code, but not necessarily vice versa. ISO 639-4 provides the basis for describing languages, as defined in this ontology, and additional codes are provided in 639-5 and other parts of the standard, again with more details about macrolanguages, other lesser known independent languages, and special language groups.

ISO 639-3 extends the set of three-letter codes provided in 639-2 to cover all of the natural, human languages in use today, along with many well-known ancient, extinct, and historical languages, including written and signed languages. It also identifies the codes found in 639-2 that represent families or groups of languages rather than a single human language, depending on the perspective of the consumer.

The Registration Authority for ISO 639-1 is the International Information Centre for Terminology, ISO 639-1/RA. This organization is responsible for maintenance of Part-1, and more information can be found at http://www.infoterm.info/standardization/iso_639_1_2002.php, although the actual code set is maintained by the US Library of Congress, together with the code set for ISO 639-2.

The Registration Authority for ISO 639-2 is the Library of Congress, ISO 639-2/RA. The Library of Congress is responsible for maintenance of Part-2, at <http://www.loc.gov/standards/iso639-2/iso639-2ra.html>. Current code sets for ISO 639-1 and ISO 639-2 are available from this site, as mentioned above. In addition to the material covered in the basic standard, the Library of Congress also publishes the German names for all languages, which is reflected in the properties given below. See http://loc.gov/standards/iso639-2/php/code_list.php for the latest release.

The Registration Authority for ISO 639-3 is SIL International, ISO 639-3/RA. SIL International is responsible for maintenance of Part-3, and more information can be found at <http://www.sil.org/iso639-3/default.asp>.

The codes included herein also correspond to the language element of the Language Tag specified in BCP 47 (RFC 4646, RFC 4647), and can be used for matching or other application development purposes (e.g., use of language identifier literals in applications that build up the RFC 4646 based tags).

This ontology (Language Representation) defines the model for the standard, based in part on ISO 639-4, with individual codes for the other parts of the standard represented in dependent models.

[Issue LCC-10 - revised versionIRI](#)

[Issue LCC-2 – eliminate smart quotes, add paragraph on currency](#)

Table 8-2 Language Representation Ontology Metadata

Metadata Term	Value
sm:filename	LanguageRepresentation.rdf
sm:fileAbbreviation	lcc-lr
OntologyIRI	http://www.omg.org/spec/LCC/Languages/LanguageRepresentation/
owl:versionIRI	http://www.omg.org/spec/LCC/20175081101/Languages/Language

Representation/

sm:directSource	<p>ISO 639-1 Codes for the representation of names of languages - Part 1: Alpha-2 code, First edition, 2002-07-15</p> <p>ISO 639-2 Codes for the representation of names of languages - Part 2: Alpha-3 code, First edition, 1998-11-01</p> <p>ISO 639-3 Codes for the representation of names of languages - Part 3: Alpha-3 code for comprehensive coverage of languages, First edition, 2007-02-01</p> <p>ISO 639-4 Codes for the representation of names of languages - Part 4: General principles of coding of the representation of names of languages and related entities, and application guidelines, First edition, 2010-07-15</p> <p>ISO 639-5 Codes for the representation of names of languages - Part 5: Alpha-3 code for language families and groups, First edition, 2008-05-15</p> <p>ISO 639-6 Codes for the representation of names of languages - Part 6: Alpha-4 code for comprehensive coverage of language variants, First edition, 2009-12-01</p>
sm:relatedSpecification	<p>BCP 47, Tags for Identifying Languages, see http://tools.ietf.org/html/bcp47</p>
sm:historyNote	<p>This ontology is ultimately intended to represent all of ISO 639 for reference purposes, and to be sufficiently extensible to accommodate new sections or modifications as they are published. The current version of the ontology (including subordinate modules containing the language names and codes) provides a unique English name (i.e., the reference name from 639-3) for each language, with UTF-8 encoded literals specifying alternates in English, French, and Indigenous languages where present in the standard, and in German corresponding to the names on the LoC web site.</p> <p>1. Where multiple English names occur in 639-1 and 639-2, we have used the primary name specified in 639-2:1998 superseded by the latest revision posted by the registration authority, or, where multiples are specified by the registration authority, the reference name from ISO 639-3 as the 'named individual name' for a given language. For languages specified in ISO 639-1, there is at least one English name and at least one French name for every language, corresponding to exactly one alpha-2 code. Most languages from ISO 639-1 have at least one indigenous name. Most languages with codes available from the Library of Congress also have at least one German name. The correspondence between the alpha-2 codes and languages are made explicit in the individuals representing the codes themselves, and can be inferred for the languages using an OWL DL reasoner.</p> <p>2. This release of the ontology covers all languages specified in parts 1 and 2 of the standard, and categorizes the alpha-3 codes from part 2 according to the categorization scheme provided in parts 3 and 4. Subsequent releases of the ontology will address additional languages covered in part 3, as well as additional components of the standard, such as equivalence to standards representing relevant scripts, as they become</p>

available, and the language groups covered by ISO 639-5.

3. We have used individuals to represent all alpha-2 and alpha-3 codes, which, in turn, have matching strings (tags) associated with them for use in a variety of applications to facilitate reasoning and mapping. The strings are provided as datatype properties of the individuals to support applications that may require them for RFC 4646-style tagging.

4. Note that some tools, including certain UML tools, are case insensitive. Thus, in cases where a language name collides with an alpha-2 or alpha-3 code, (i.e., Ga, Ewe, Fon, Ido, Lao, Tiv, Twi, Vai, and Yao), the names for the individual codes have been extended with `'_1'` (e.g., `'_1ewe_1'`).

5. We found a few anomalies in the standards while developing this ontology. These include:

(1) Bihari is included in the 2002 version of 639-1, in the 1998 version of 639-2, and in the online codes posted by the Library of Congress in 2007 for parts 1 and 2, with part 1 code of `'_1bh'` and part 2 bibliographic and terminology codes of `'_1bih'`. At that time, there was no discussion stating that Bihari is a collective language, although it was omitted from the downloadable data for 639-3. Since then, the language element has been renamed `'_1Bihari languages'`, in both English and French, without change to the corresponding language codes. The latest version of the code sets reflect this modification. Our assumption is that the trigraph for Bihari is a collective language code, which is supported by online research in Eastern Indic languages.

(2) Serbo-Croatian was included in the 2002 version of 639-1, with part 1 code `'_1sh'`. It was not mentioned in the 1998 version of 639-2, but appears in 639-3 with a language identifier of `'_1hbs'`, without codes for 639-2. As of 2010, Serbo-Croatian has been eliminated from ISO 639-1 and 639-2 codes altogether, and the ontology reflects this.

(3) Other changes in the latest version of the ontology include elimination of the 639-1 code for Moldavian, merging the language with Romanian, and additional English and French names for some languages, such as Dutch (to include Flemish, flamais), among others.

(4) German names for languages in ISO 639-2 were added to the Library of Congress in 2014, and are supported in this version of the ontology.

6. The LCC 1.0 version of this ontology, published in advance of the 2017 New Orleans OMG Technical Meeting, was current as of 31 July 2017 with respect to the ISO 639-1 and 639-2 codes included herein.

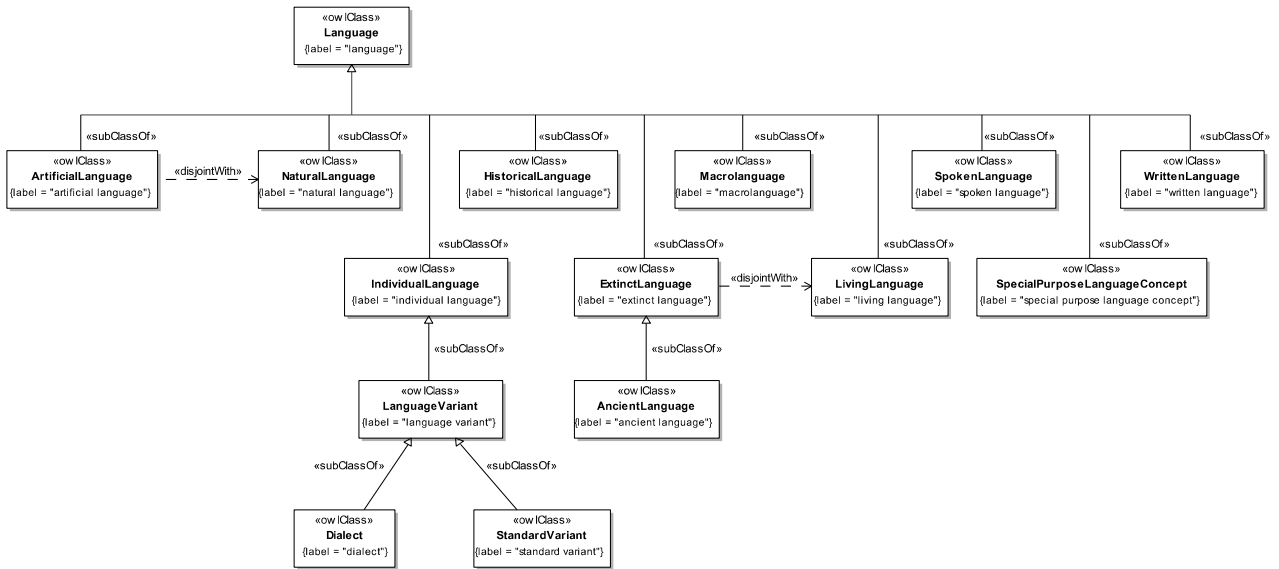


Figure 8.1 Language Class Hierarchy

Figure 8.1 provides the primary inheritance hierarchy for languages, including the disjoint relationship between extinct and living languages.

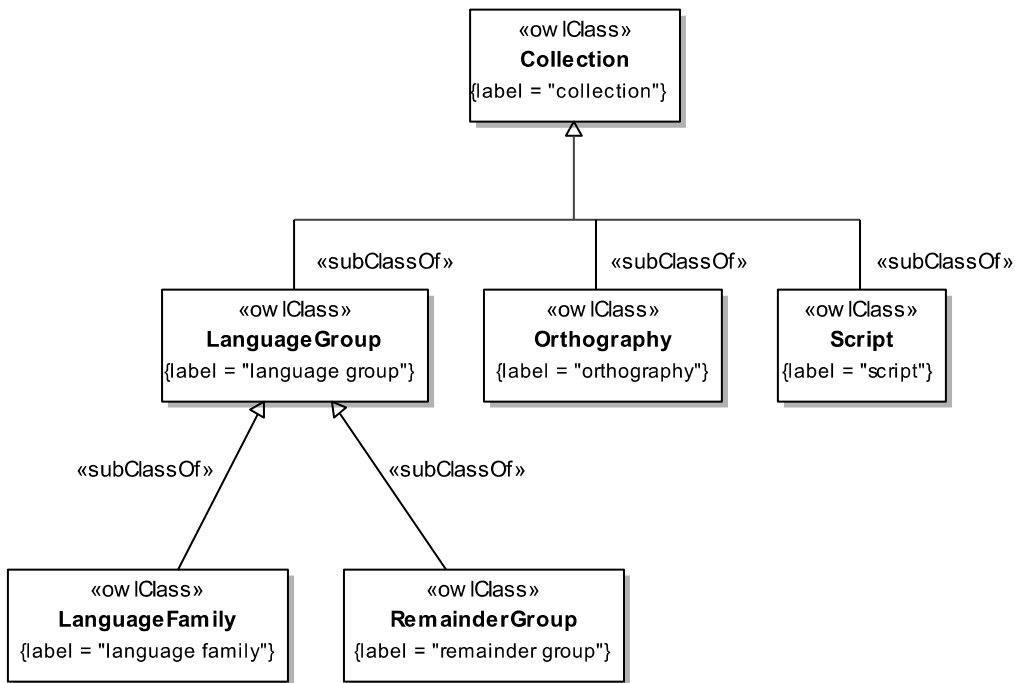


Figure 8.2 Collection Class Hierarchy

The primary collection concepts are shown in Figure 8.2. These include not only language groups of various sorts but the concept of an orthography for a language and one or more scripts for a language, which are collections of rules and symbols.

Issue LCC-31 – revise Figure 8.3

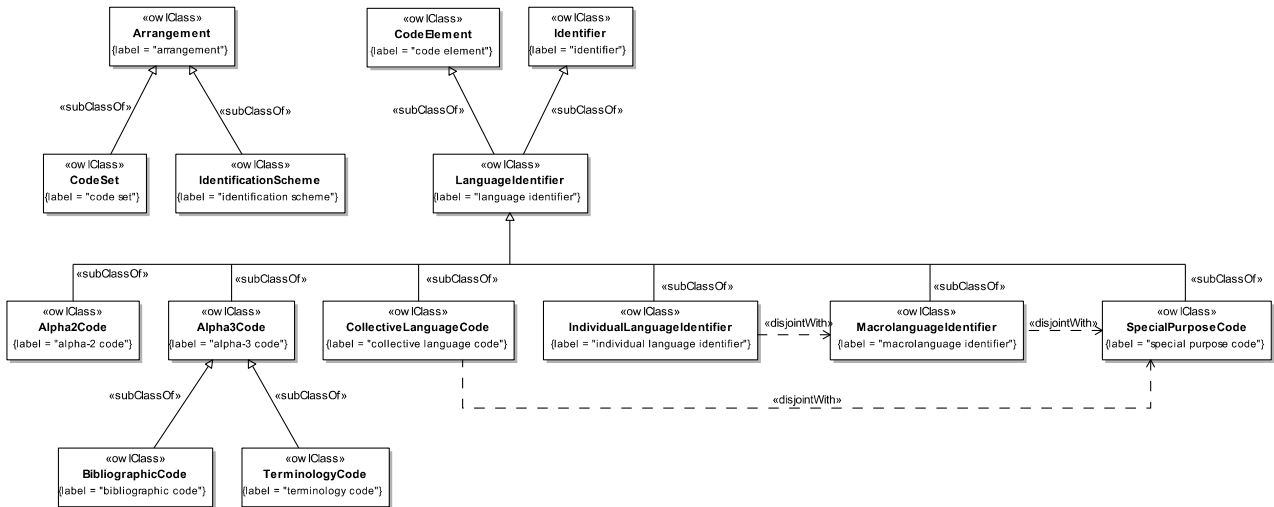


Figure 8.3 Identifier and Code Class Hierarchy

Figure 8.3 provides a view of the identifier and code concepts in the ontology, including disjoint relationships among the three-character language codes.

Issue LCC-15 – revise Figure 8.4

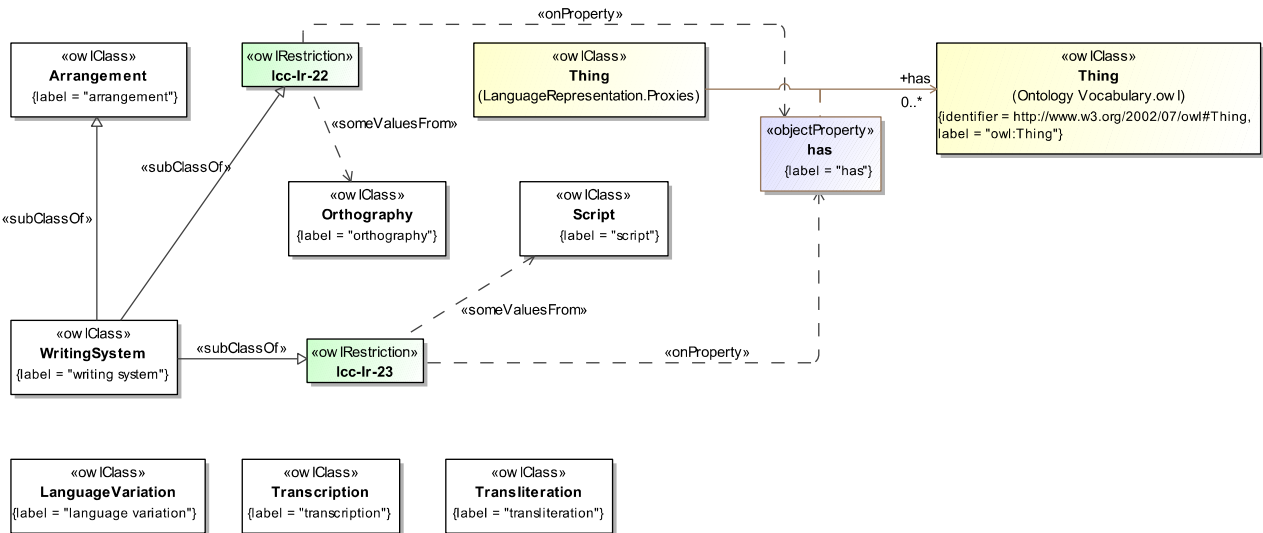


Figure 8.4 Systems and Processes in Language Analysis

The remaining concepts defined in ISO 639, for several processes and systems related to language, are given in Figure 8.4.

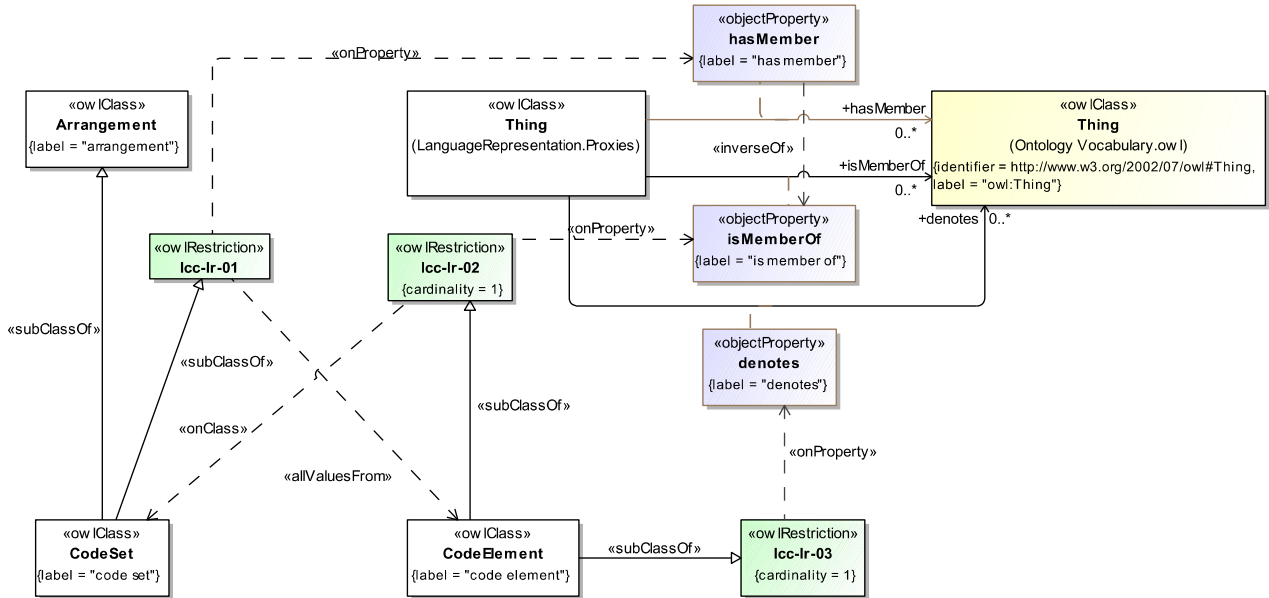


Figure 8.5 Definition of Code Set and Code Element

Figure 8.5 elaborates the definitions for code sets and code elements, which are fundamental to both ISO 639 and ISO 3166.

[Issue LCC-14 - revised Figure 8.6](#)

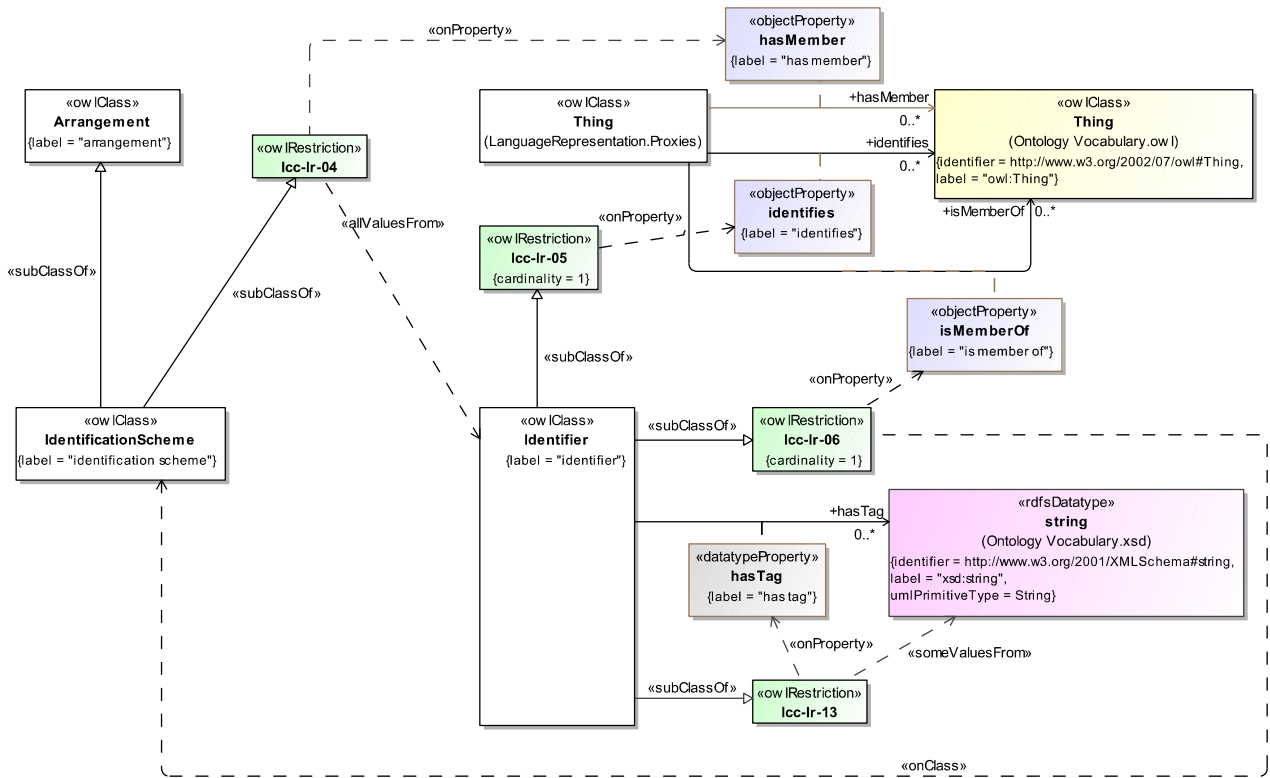


Figure 8.6 Definition of Identification Schemes and Identifiers

Figure 8.6 defines identification schemes and identifiers, which are also fundamental to both ISO 639 and ISO 3166.

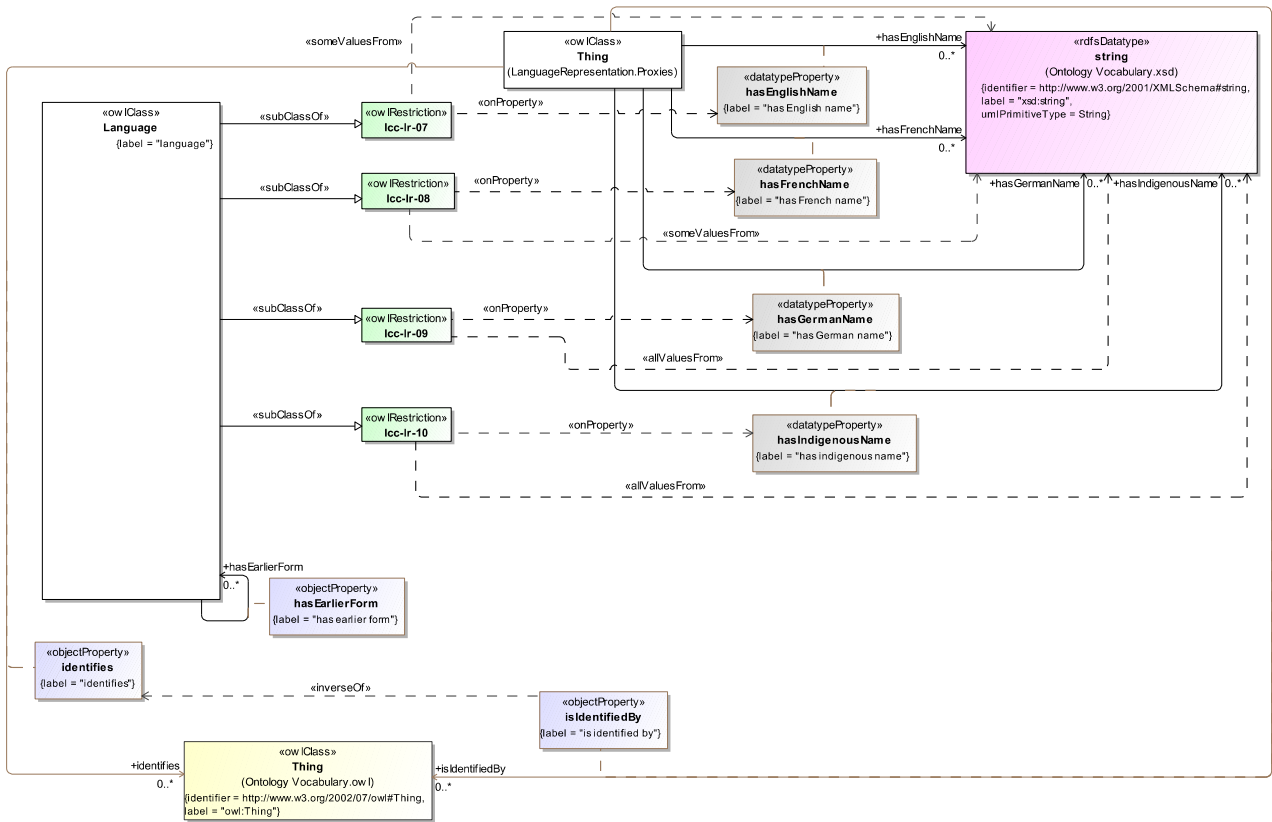


Figure 8.7 Definition of Language

As shown in Figure 8.7, there are a number of potential names associated with a given language as specified in the ISO 639 standard. German names have been added to the standard on the registration authority web sites.

Issue LCC-14 - revised Figure 8.8

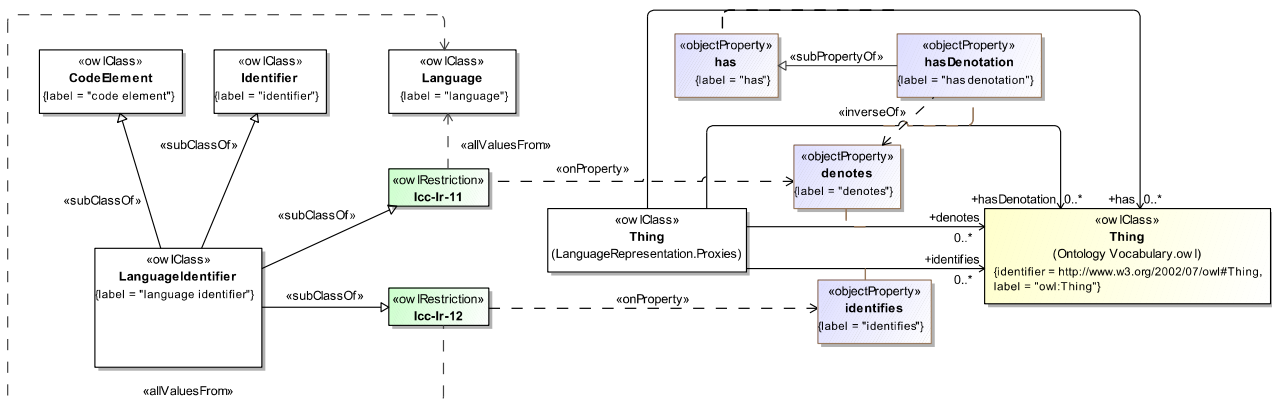


Figure 8.8 Definition of Language Identifier

Figure 8.8 provides the full definition of a language identifier, which the various kinds of ISO 639 language codes inherit.

[Issue LCC-24 – revise Figure 8.9](#)

[Issue LCC-31 – revise Figure 8.9](#)

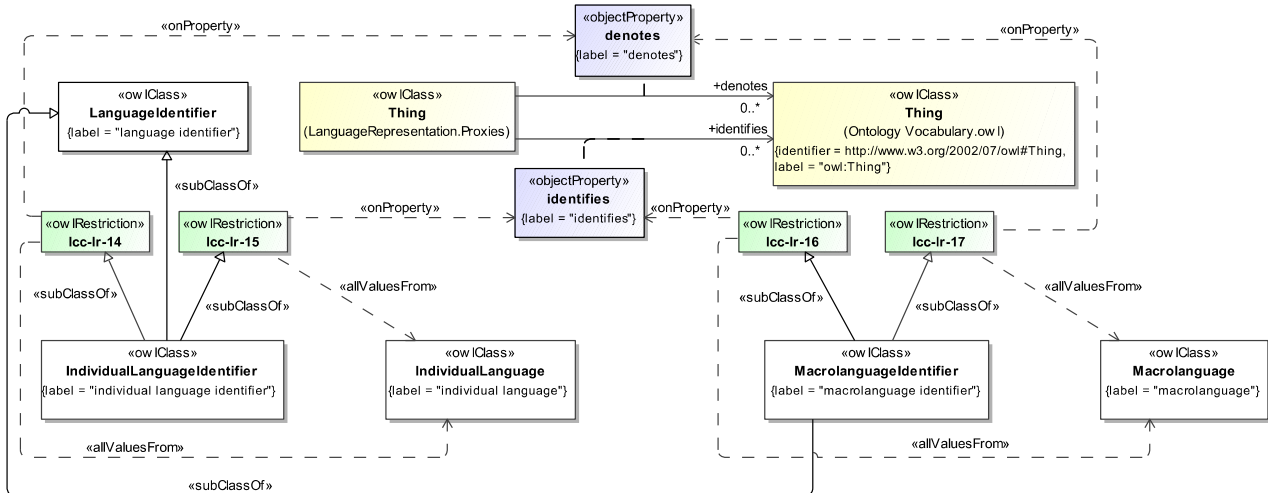


Figure 8.9 Definition of Individual and Macrolanguage Identifiers

ISO 639 differentiates between individual language and macrolanguages, including between the respective identifiers, where a macrolanguage represents multiple individual languages in some contexts but are treated as a single language in ISO 639-2, as shown in Figure 8.9.

Finally, Figure 8.10 provides the definitions for the identifiers specific to language groups and special purpose concepts, as used in ISO 639.

[Issue LCC-24 – revise Figure 8.10](#)

[Issue LCC-31 – revise Figure 8.10](#)

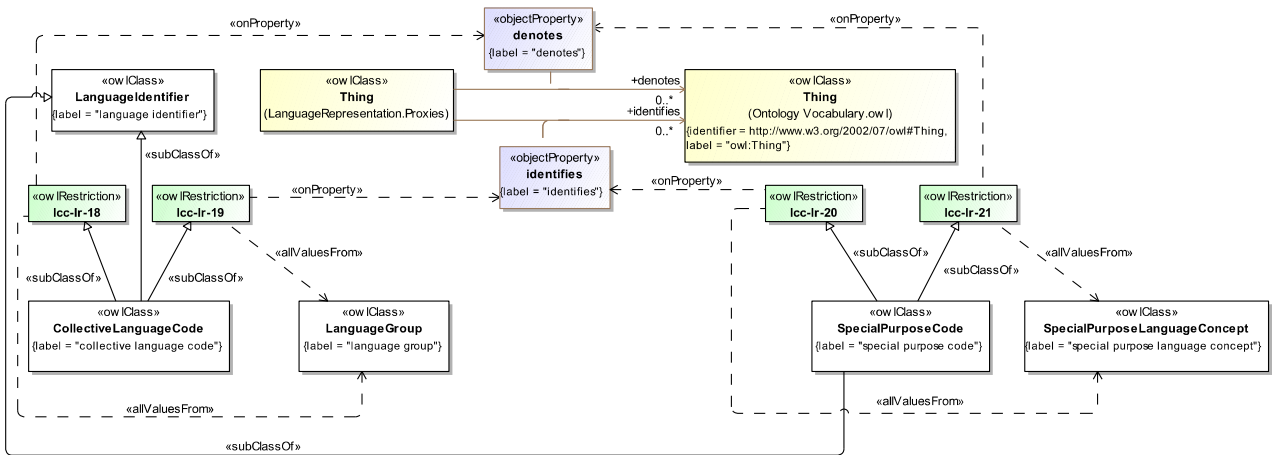


Figure 8.10 Definitions of Identifiers for Language Groups and Special Purpose Concepts

The detailed annotations and axioms that comprise the ontology are provided in Table 8-3, below.

[Issue LCC-14 – revised definition of Identifier](#)

[Issue LCC-15 – revised definition of WritingSystem](#)

[Issue LCC-24 – revised definitions of language identifiers](#)

Table 8-3 Language Representation Ontology Details

Classes

Name	Annotations	Class Expressions
Alpha2Code (alpha-2 code)	<p>Definition: a language identifier for a human language as defined by ISO 639-1, that is, a two-letter combination of characters used to represent a language or languages</p> <p>Note: In the ISO 639-1 language code, each language identifier is composed of two letters (lower case letters from the Latin alphabet, corresponding to characters 97 through 122 of the UTF-8 encoding), without diacritical marks or other encodings of any kind.</p> <p>Scope note: The identifiers are not abbreviations for the languages they identify. They are derived in some way from the indigenous language name or from preferences of the relevant speech community.</p> <p>Source: Section 4.1, ISO 639-1</p> <p>See also: https://en.wikipedia.org/wiki/UTF-8</p>	Parent Class: LanguageIdentifier
Alpha3Code (alpha-3 code)	<p>Definition: a language identifier for a human language as defined by ISO 639, that is, a three-letter combination of characters used to represent a language or languages</p> <p>Note: In the ISO 639-2 language code, each</p>	Parent Class: LanguageIdentifier

	<p>language identifier is composed of three letters (lower case letters from the Latin alphabet, corresponding to characters 97 through 122 of the UTF-8 encoding), without diacritical marks or other encodings of any kind.</p> <p><u>Note</u>: Two code sets are provided in ISO 639-2, one for bibliographic applications and one for terminology applications. Some of these are considered collective language codes, referring to a family of languages, and there are a few special purpose codes for use in various applications. ISO 639-3 provides a single, three character code for each individual language or macrolanguage. Additional codes for language families and groups are specified in other parts of the standard.</p> <p><u>Source</u>: Section 3.2, ISO 639-2</p> <p>See also: https://en.wikipedia.org/wiki/UTF-8</p>
AncientLanguage (ancient language)	<p><u>Definition</u>: an extinct language that has an attested <u>Parent Class</u>: ExtinctLanguage literature and is recognized as having special status in the academic community</p> <p><u>Note</u>: Ancient languages may have either individual or collective language codes. See section 4.1.5, ISO 639-2, for an explanation of the latter case.</p> <p><u>Source</u>: Section 3.25 and 4.7, ISO 639-4</p>
Arrangement (arrangement)	<p><u>Definition</u>: a structure or means of organizing information such as a schema, numbering system, organization scheme, measurement system, taxonomy, or language for organizing information</p>
ArtificialLanguage (artificial language)	<p><u>Definition</u>: a language for human communication <u>Parent Class</u>: Language that has been artificially devised</p> <p><u>Note</u>: Artificial languages do not include reconstructed languages or computer programming languages.</p> <p><u>Class Axiom</u>: \neg NaturalLanguage</p> <p><u>Source</u>: Section 3.28 and 4.8, ISO 639-4</p>
BibliographicCode (bibliographic code)	<p><u>Definition</u>: an alpha-3 code that is a member of the <u>Parent Class</u>: Alpha3Code set of bibliographic codes in ISO 639-2</p>
CodeElement (code element)	<p><u>Definition</u>: a sequence of characters denoting something that it is associated with for some purpose, within a specified context, according to some rule set</p> <p><u>Property Restriction</u>: = 1 isMemberOf.CodeSet (lcc-lr-02)</p> <p><u>Property Restriction</u>: = 1 denotes (lcc-lr-03)</p> <p><u>Source</u>: ISO/IEC 11179-3 Information technology - Metadata registries (MDR) - Part 3: Registry metamodel and basic attributes, Third edition, 2013-02-15</p>
CodeSet (code set, coding scheme)	<p><u>Definition</u>: a system of alpha-numeric symbols, or combinations of symbols, that stand for specified values in some context</p> <p><u>Parent Class</u>: Arrangement</p> <p><u>Property Restriction</u>: \forall hasMember.CodeElement (lcc-lr-01)</p> <p><u>Source</u>: ISO/IEC 11179-3 Information technology - Metadata registries (MDR) - Part 3: Registry metamodel and basic attributes, Third edition, 2013-02-15</p>

Collection (collection)	<u>Definition</u> : a grouping of some variable number of things (may be zero) that have some shared significance	
CollectiveLanguageCode (collective language code)	<u>Definition</u> : a language identifier or code used to represent a group of languages <u>Note</u> : See section 4.1.1, ISO 639-2, for an explanation of the usage of such codes, and section 4.1.3 to gain understanding of the distinction between collective language and macrolanguage codes. <u>Source</u> : Sections 3.3 and 4.1.1, and 4.1.3, ISO 639-2; Section 4.6, ISO 639-4	<u>Parent Class</u> : Alpha3CodeLanguageIdentifier <u>Class Axiom</u> : \neg SpecialPurposeCode <u>Property Restriction</u> : \forall denotes.LanguageGroup (lcc-lr-18) <u>Property Restriction</u> : \forall identifies.LanguageGroup (lcc-lr-19)
Dialect (dialect)	<u>Definition</u> : a language variant that is specific to a geographical region or speech community <u>Note</u> : Dialects are typically represented via the same language code as the code for the primary language, with a few exceptions for well-known dialects. See sections 4.1.3 and 4.1.4, ISO 639-2 for additional details on the treatment of dialects in the standard. <u>Source</u> : Sections 3.8, 4.2, and 4.5, ISO 639-4; Sections 4.1.3 and 4.1.4, ISO 639-2	
ExtinctLanguage (extinct language)	<u>Definition</u> : an individual language or variant that is no longer in use and has no current descendant <u>Source</u> : Section 3.24 and 4.7, ISO 639-4	<u>Parent Class</u> : Language <u>Class Axiom</u> : \neg LivingLanguage
HistoricalLanguage (historical language)	<u>Definition</u> : a well-known prior version of a living or extinct language <u>Source</u> : Section 3.26 and 4.7, ISO 639-4	
IdentificationScheme (identification scheme)	<u>Definition</u> : a system for allocating identifiers to objects <u>Source</u> : ISO/IEC 11179-3 Information technology - Metadata registries (MDR) - Part 3: Registry metamodel and basic attributes, Third edition, 2013-02-15	<u>Parent Class</u> : Arrangement <u>Property Restriction</u> : \forall hasMember.Identifier (lcc-lr-04)
Identifier (identifier)	<u>Definition</u> : a sequence of characters uniquely identifying something that it is associated with for some purpose and within a specified context <u>Note</u> : Text-valued tags are included here as they may be useful for automated transformation or encoding systems, such as those used to produce IETF compliant language tags in XML. <u>Source</u> : ISO/IEC 11179-3 Information technology - Metadata registries (MDR) - Part 3: Registry metamodel and basic attributes, Third edition, 2013-02-15	<u>Property Restriction</u> : = 1 isMemberOf.IdentificationScheme (lcc-lr-06) <u>Property Restriction</u> : = 1 identifies (lcc-lr-05) <u>Property Restriction</u> : \exists hasTag.string (lcc-lr-13)
IndividualLanguage (individual language)	<u>Definition</u> : a language that can be distinguished from another language by some set of rules <u>Note</u> : Identifiers in Parts 1, 2, and 3 of ISO 639 are assumed to denote distinct individual languages, unless the language name explicitly refers to a language group. See section 4.2 in ISO 639-4 for a detailed explanation of the definition	

	of individual language in the context of the ISO 639 standard. <u>Source</u> : Section 3.7, ISO 639-4	
IndividualLanguageIdentifier (individual language identifier)	<u>Definition</u> : a language identifier with a whose scope representing is that of an individual (distinct) language <u>Source</u> : Section 3.7, ISO 639-3	<u>Parent Class</u> : Alpha3CodeLanguageIdentifier <u>Class Axiom</u> : \neg MacrolanguageIdentifier <u>Property Restriction</u> : \forall denotes.IndividualLanguage (lcc-lr-14) <u>Property Restriction</u> : $\neg\forall$ identifies.IndividualLanguage (lcc-lr-15)
Language (language)	<u>Definition</u> : a systematic use of sounds, characters, symbols or signs to communicate meaning <u>Source</u> : Section 3.6, ISO 639-4	<u>Property Restriction</u> : ≥ 1 hasEnglishName.string (lcc-lr-07) <u>Property Restriction</u> : ≥ 1 hasFrenchName.string (lcc-lr-08) <u>Property Restriction</u> : \forall hasGermanName.string (lcc-lr-9) <u>Property Restriction</u> : \forall hasIndigenousName.string (lcc-lr-10)
LanguageFamily (language family)	<u>Definition</u> : a group of individual languages related to each other through common ancestry <u>Source</u> : Section 3.11, ISO 639-4	<u>Parent Class</u> : LanguageGroup
LanguageGroup (language group)	<u>Definition</u> : a collection of two or more individual languages, treated as a group for some purpose <u>Note</u> : See section 4.6 in ISO 639-4 for additional explanatory material for language groups. <u>Direct source</u> : Section 3.10, ISO 639-4	<u>Parent Class</u> : Collection
LanguageIdentifier (language identifier, language symbol)	<u>Definition</u> : a string of characters that uniquely identifies a linguistic entity <u>Scope note</u> : In the language codes of Parts 1, 2, 3, and 5 of ISO 639, each language identifier is composed of two or three letters. <u>Source</u> : Section 3.5, ISO 639-4	<u>Parent Class</u> : CodeElement <u>Parent Class</u> : Identifier <u>Property Restriction</u> : $= 1$ hasLanguageTag.string (lcc-lr-13) <u>Property Restriction</u> : \forall denotes.Language (lcc-lr-11) <u>Property Restriction</u> : \forall identifies.Language (lcc-lr-12)
LanguageVariant (language variant)	<u>Definition</u> : a variation of an individual language that is sufficiently unique that it can be identified and named <u>Source</u> : Section 3.14, ISO 639-4	<u>Parent Class</u> : IndividualLanguage
LanguageVariation (language variation)	<u>Definition</u> : continuous variation within and between individual languages <u>Note</u> : Language variation may include change over time, space, cultural affiliation, etc. <u>Source</u> : Section 3.13, ISO 639-4	
LivingLanguage (living language)	<u>Definition</u> : an individual language or variant in	<u>Parent Class</u> : Language

language)	use today by some speech community <u>Source</u> : Section 3.23, ISO 639-4	
Macrolanguage (macrolanguage)	<u>Definition</u> : a language that may be viewed in some circumstances as an individual language, but actually represents two or more individual languages <u>Note</u> : See sections 4.1 and 4.3 of ISO 639-4 for an extensive description of macrolanguages and how they are different from language groups. <u>Source</u> : Section 3.9, ISO 639-4	<u>Parent Class</u> : Language
MacrolanguageIdentifier (macrolanguage identifier)	<u>Definition</u> : a language identifier whose scope is that of a macrolanguage <u>Source</u> : Section 3.7, ISO 639-3	<u>Parent Class</u> : Alpha3CodeLanguageIdentifier <u>Class Axiom</u> : \neg SpecialPurposeCode <u>Property Restriction</u> : \forall denotes.Macrolanguage (lcc-lr-17) <u>Property Restriction</u> : \forall identifies.Macrolanguage (lcc-lr-16)
NaturalLanguage (natural language)	<u>Definition</u> : a language used in human communications that is not artificial in nature <u>Source</u> : Section 3.27, ISO 639-4	<u>Parent Class</u> : Language
Orthography (orthography)	<u>Definition</u> : a set of conventions and rules for representing language in written form <u>Note</u> : The orthographic rules for a given language may include rules of spelling, hyphenation, capitalization, word breaks, emphasis, and punctuation. Languages that have multiple writing systems may have distinct orthographies and scripts. <u>Source</u> : Section 3.27, ISO 639-4	<u>Parent Class</u> : Collection
RemainderGroup (remainder group)	<u>Definition</u> : a group of languages that explicitly excludes certain individual languages <u>Source</u> : Section 3.12, ISO 639-4	<u>Parent Class</u> : LanguageGroup
Script (script)	<u>Definition</u> : a set of graphic characters used to represent one or more languages in writing <u>Note</u> : Use of multiple writing systems does not mean that multiple language identifiers are necessary for a language. ISO 639 language identifiers may be combined with script identifiers from ISO 15924 (e.g., BCP 47). <u>Source</u> : Section 3.17, ISO 639-4	<u>Parent Class</u> : Collection
SpecialPurposeCode (special purpose code)	<u>Definition</u> : a language identifier whose scope is that of a special purpose language construct <u>Source</u> : Section 3.7, ISO 639-3	<u>Parent Class</u> : Alpha3CodeLanguageIdentifier <u>Property Restriction</u> : \forall denotes.SpecialPurposeLanguageConcept (lcc-lr-21) <u>Property Restriction</u> : \forall identifies.SpecialPurposeLanguageConcept (lcc-lr-20)
SpecialPurposeLanguageCon	<u>Definition</u> : a language concept introduced in ISO	<u>Parent Class</u> : Language

cept (special purpose language concept)	639-3 to satisfy special-purpose requirements, typically to support application constraints <u>Source:</u> Section 4.2.6, ISO 639-3	
SpokenLanguage (spoken language)	<u>Definition:</u> an individual language or language variant that is articulated through speech (oral or vocal) sounds <u>Source:</u> Section 3.22, ISO 639-4	<u>Parent Class:</u> Language
StandardVariant (standard variant)	<u>Definition:</u> a language variant with a high degree of status and normalization, typically used in public discourse, centers of government and commerce <u>Source:</u> Section 3.15, ISO 639-4	<u>Parent Class:</u> LanguageVariant
TerminologyCode (terminology code)	<u>Definition:</u> a language identifier whose scope is that of terminological codes <u>Source:</u> Section 3.7, ISO 639-3	<u>Parent Class:</u> Alpha3Code
Transcription (transcription)	<u>Definition:</u> the representation of speech or signing in written form <u>Note:</u> The resulting text is also referred to as a transcription. <u>Source:</u> Section 3.19, ISO 639-4	
Transliteration (transliteration)	<u>Definition:</u> the conversion of text from one script to another without loss of information <u>Note:</u> The resulting text is also referred to as a transliteration. <u>Source:</u> Section 3.20, ISO 639-4	
WritingSystem (writing system)	<u>Definition:</u> a system for writing a language, including the requisite script and character set <u>Source:</u> Section 3.16, ISO 639-4	<u>Parent Class:</u> Arrangement <u>Property Restriction:</u> \exists has.Orthography (lcc-lr-22) <u>Property Restriction:</u> \exists has.Script (lcc-lr-23)
WrittenLanguage (written language)	<u>Definition:</u> the representation of a language via a writing system, with a relatively normalized orthography <u>Source:</u> Section 3.21, ISO 639-4	<u>Parent Class:</u> Language

Issue LCC-10 – revised definition of denotes and hasDenotation

Properties

Name	Annotations	Property Axioms
denotes (denotes)	<u>Definition:</u> represents, signifies, or symbolizes serves as a linguistic expression of the notion of, means	
has (has)	<u>Definition:</u> indicates that someone (or something) possesses	

	something, as a characteristic, attribute, feature, capability, and so forth	
hasDenotation (has denotation)	<u>Definition</u> : has meaning, representation, signifier, or symbol <u>expresses</u>	<u>Parent Property</u> : has <u>Inverse</u> : denotes
hasEarlierForm (has earlier form)	<u>Definition</u> : relates a language to an earlier form (historically significant) of that same language	<u>Parent Property</u> : has <u>Domain</u> : Language <u>Range</u> : Language
hasMember (has member)	<u>Definition</u> : relates something, typically a collection, group or organization, to some discrete thing identified as a member of it	<u>Inverse</u> : isMemberOf
identifies (identifies)	<u>Definition</u> : recognizes or establishes within some context	
isIdentifiedBy (is identified by)	<u>Definition</u> : has an indicator or label, that is unique within some context	<u>Inverse</u> : identifies
isMemberOf (is member of)	<u>Definition</u> : belongs, either individually or collectively, to a group	
hasName (has name)	<u>Definition</u> : associates a name, reference name, or appellation with an individual concept <u>Source</u> : Section 3.4, ISO 639-3	<u>Range</u> : string
hasEnglishName (has English name)	<u>Definition</u> : associates a name in English with an individual concept <u>Source</u> : Section 3.4, ISO 639-3	<u>Parent Property</u> : hasName <u>Range</u> : string
hasFrenchName (has French name)	<u>Definition</u> : associates a name in French with an individual concept <u>Source</u> : Section 3.4, ISO 639-3	<u>Parent Property</u> : hasName <u>Range</u> : string
hasGermanName (has German name)	<u>Definition</u> : associates a name in German with an individual concept	<u>Parent Property</u> : hasName <u>Range</u> : string
hasIndigenousName (has indigenous name)	<u>Definition</u> : associates a local regional or cultural name with an individual concept <u>Source</u> : Section 3.4, ISO 639-3	<u>Parent Property</u> : hasName <u>Range</u> : string
hasLanguageTag (has language tag)	<u>Definition</u> : a unique combination of alphanumeric characters corresponding to the language identifier <u>Source</u> : Section 3.4, ISO 639-3	<u>Domain</u> : <u>LanguageIdentifier</u> <u>Range</u> : string <u>Property axiom</u> : Functional

8.4 Ontology: ISO 639-1 Language Codes

This ontology represents the subset of the ISO 639 standard that provides the language names and actual codes for ISO 639-1, updated to reflect changes identified on the Library of Congress site as of the date of the version IRI.

[Issue LCC-2 - revised version IRI, change note addition](#)

[Issue LCC-32 – update metadata](#)

Table 8-4 ISO 639-1 Language Codes Ontology Metadata

Metadata Term	Value
sm:filename	ISO639-1-LanguageCodes.rdf
sm:fileAbbreviation	lcc-639-1
OntologyIRI	http://www.omg.org/spec/LCC/Languages/ISO639-1-LanguageCodes/
owl:versionIRI	http://www.omg.org/spec/LCC/20175081101/Languages/ISO639-1-LanguageCodes/
sm:dependsOn	http://www.omg.org/spec/LCC/Languages/LanguageRepresentation/
<u>skos:changeNote</u>	<u>The http://www.omg.org/spec/LCC/20151101/Languages/ISO639-1-LanguageCodes.rdf version of this ontology has been revised to reflect the issues addressed by the LCC 1.0 FTF report. The codes themselves are current as of 31 July 2017, based on the US Library of Congress site.</u>

Note that this ontology consists entirely of individuals representing the ISO 639-1 code set, language, and language codes, and therefore is not modeled herein. The contents of this ontology are considered normative, however, and are provided in machine-readable form.

8.5 Ontology: ISO 639-2 Language Codes

This ontology represents the subset of the ISO 639 standard that provides the language names and actual codes for ISO 639-2, updated to reflect changes identified on the Library of Congress site as of the date of the versionIRI.

[Issue LCC-2 - revised versionIRI, change note addition](#)

[Issue LCC-32 – update table name](#)

Table 8-5 Registration Authorities Ontology Metadata | ISO 639-2 Language Codes Ontology Metadata

Metadata Term	Value
sm:filename	ISO639-2-LanguageCodes.rdf
sm:fileAbbreviation	lcc-639-2
OntologyIRI	http://www.omg.org/spec/LCC/Languages/ISO639-2-LanguageCodes/
owl:versionIRI	http://www.omg.org/spec/LCC/20175081101/Languages/ISO639-2-LanguageCodes/
sm:dependsOn	http://www.omg.org/spec/LCC/Languages/LanguageRepresentation/ http://www.omg.org/spec/LCC/Languages/ISO639-1-LanguageCodes/
<u>skos:changeNote</u>	<u>The http://www.omg.org/spec/LCC/20151101/Languages/ISO639-2-LanguageCodes.rdf version of this ontology has been revised to reflect the issues addressed by the LCC 1.0 FTF report. The codes themselves are current as of 31 July 2017, based on the US Library of Congress site.</u>

Note that this ontology consists entirely of individuals representing the ISO 639-2 code set, language, and language codes, and therefore is not modeled herein. The contents of this ontology are considered normative, however, and are provided in machine-readable form.

This page intentionally left blank.

9 Country Ontologies

9.1 Overview

This section defines the terms, definitions, relationships, and additional logic specified in the ontologies that make up the Countries Module.

9.2 Module: Countries

Issue LCC-16 – update the module to reflect the addition of the M49 codes

Table 9-1 Countries Module Metadata

Metadata Term	Value
sm:filename	AboutCountries.rdf
sm:fileAbbreviation	lcc-cty
OntologyIRI	http://www.omg.org/spec/LCC/Countries/AboutCountries/
owl:versionIRI	http://www.omg.org/spec/LCC/20175081101/Countries/AboutCountries/
sm:moduleName	Countries
sm:moduleAbbreviation	LCC-CTY
sm:moduleVersion	1.0
sm:moduleAbstract	<p>This module contains ontologies representing countries, territories, subdivisions, and other geopolitical entities commonly used in business, scientific, and government systems and applications. The main body of the module is based on ISO 3166 as well as the country element of the Language Tag specified in BCP 47 (RFC 4646, RFC 4647). It is intended to provide a systematic description of the vocabulary used for country representation in applications requiring geophysical and geopolitical concepts derived from, or in compliance with ISO 3166, including but not limited to web-based applications. It is also compatible with the GeoNames ontology, but represents only a small fraction of the material in GeoNames.</p> <p><u>This module contains ontologies representing countries, territories, subdivisions, and other geopolitical entities commonly used in business, scientific, and government systems and applications. The main body of the module is designed to support ISO 3166 and the U.N. M49 region codes as normative a-box extensions, as well as the country element of the Language Tag specified in BCP 47 (RFC 4646, RFC 4647). It is intended to provide a systematic description of the vocabulary used for country representation in applications requiring geophysical and geopolitical concepts derived from, or in compliance with ISO 3166 and M49, including but not limited to web-based applications. It is also compatible with the GeoNames ontology, but represents only a subset of the content provided in GeoNames.</u></p>

9.3 Ontology: Country Representation

Issue LCC-4 – generalize introductory text with respect to scope, usage

The purpose of the Country Representation ontology, based on ISO 3166 and other representations of geographic regions and countries, such as the ISO Online Browsing Platform, UN M49 Region codes, SWIFT registry, UN FAO and CIA World Factbook, FIFA and International Olympics codes for countries, and GeoNames, is to provide a systematic description of the vocabulary used for country and geopolitical entity representation (based strictly on requirements for business applications, not broader geographic or political uses). A few additional properties to support geophysical coordinates, identified in the UN FAO and CIA World Factbook as well as from the well-known GeoNames ontology, have been added, but extensions to support other coding systems, such as the FAOSTAT code, have not been included. ISO 3166 provides universally applicable coded representations of names of countries, dependencies, and other areas of particular geopolitical interest and their subdivisions.

ISO 3166 provides widely, though not universally, applicable coded representations of names of countries, dependencies, and other areas of particular geopolitical interest and their subdivisions.

- ISO 3166-1 (Country codes) establishes codes that represent the current names of countries, dependencies, and other areas of particular geopolitical interest, on the basis of lists of country names obtained from the United Nations.
- ISO 3166-2 (Country subdivision code) establishes a code that represents the names of the principal administrative divisions, or similar areas, of the countries, etc. included in the ISO 3166-1.
- ISO 3166-3 (Code for formerly used names of countries) establishes a code that represents non-current country names, *i.e.*, the country names deleted from ISO 3166 since its first publication in 1974.
- The United Nations Standard Country or Area Codes for Statistical Use (M49), described at <https://unstats.un.org/unsd/methodology/m49/>, provides further regional classification for countries by continent, region within a continent, and sub-regions within regions that are widely used as well, and so this ontology is designed to support the M49 code set as well. M49 reuses the ISO 3166 codes for countries and some regions, and augments that with additional, broader regional codes.

This ontology reflects the first two parts of ISO 3166, revised to reflect the latest modifications made by the relevant registrars via the sources mentioned above. It has been partitioned into 3 components: (1) the essential concept system describing the standard (this ontology), (2) lcc-3166-1 contains all of the individuals specified in ISO 3166-1, and (3) lcc-3166-2 contains the individuals specified in ISO 3166-2. A fourth ontology, supporting ISO 3166-3, may be added if requirements from the OMG community arise. This ontology provides a reference model to support the first two parts of ISO 3166, along with the other coding systems mentioned above.

Issue LCC-14 – revised versionIRI

Issue LCC-4 – revised source and history metadata

Table 9-2 Country Representation Ontology Metadata

Metadata Term	Value
sm:filename	CountryRepresentation.rdf
sm:fileAbbreviation	lcc-cr
OntologyIRI	http://www.omg.org/spec/LCC/Countries/CountryRepresentation/
owl:versionIRI	http://www.omg.org/spec/LCC/20175081+01/Countries/CountryRepresentation/
sm:relatedSpecification	sm+ISO 3166-1 Codes for the representation of names of

<code>directSource</code>	<p>countries and their subdivisions- Part 1: Country codes, Second edition, 2006-11-15</p> <p>ISO 3166-2 Codes for the representation of names of countries and their subdivisions- Part 2: Country subdivision code, First edition, 1998-12-15</p> <p>ISO 3166-3 Codes for the representation of names of countries and their subdivisions- Part 3: Code for formerly used names of countries, First edition, 1998-03-01</p>
<code>sm:relatedSpecification</code>	<p>Food and Agriculture Organization of the United Nations, see http://www.fao.org/countryprofiles/en/</p> <p>Society for Worldwide Interbank Financial Telecommunication (SWIFT) Online Directories, see http://www.swift.com/bsl/index.faces</p> <p>CIA World Factbook, see https://www.cia.gov/library/publications/the-world-factbook/</p>
<code>sm:dependsOn</code>	http://www.omg.org/spec/LCC/Languages/LanguageRepresentation/

Issue LCC-4 – revise Figure 9.1

Issue LCC-1 – revise Figure 9.1

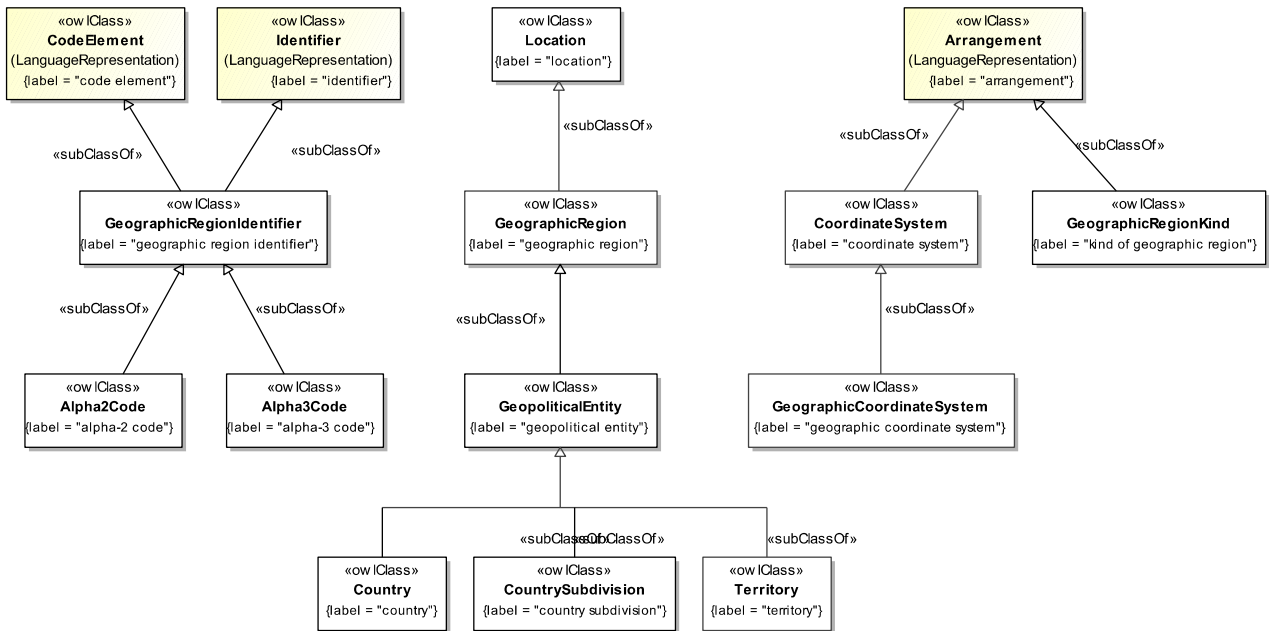


Figure 9.1 Country Representation Class Hierarchy

Figure 9.1 provides an overview of the concepts in the Country Representation ontology, including the primary inheritance relationships.

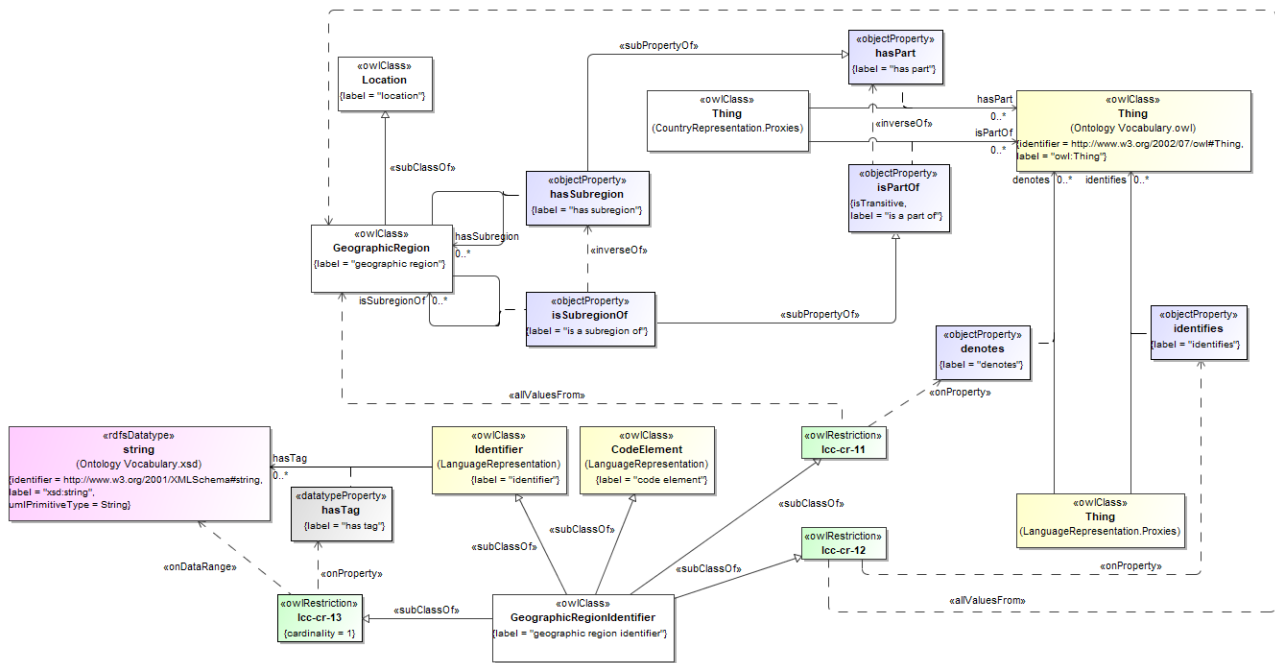


Figure 9.2 Geographic Regions

Figure 9.2 defines a geographic region as a location that may have sub-regions and may be identified by a geographic region identifier.

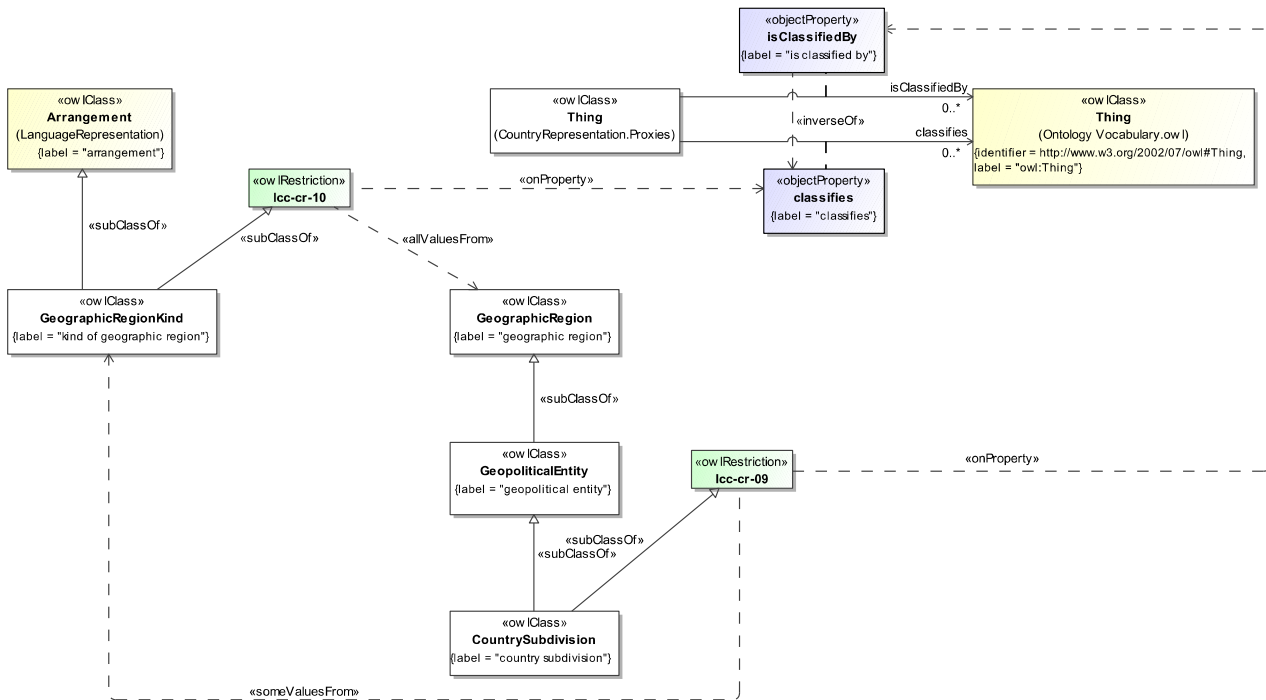


Figure 9.3 Classifying Geographic Regions

Figure 9.3 defines a geographic region kind as an arrangement that classifies geographic regions, and shows how, specifically, a country subdivision is classified by a geographic region kind (for example, as a province, state, district, territory, or other sub-region kind).

Issue LCC-1 – replace figure 9.4, caption, and text

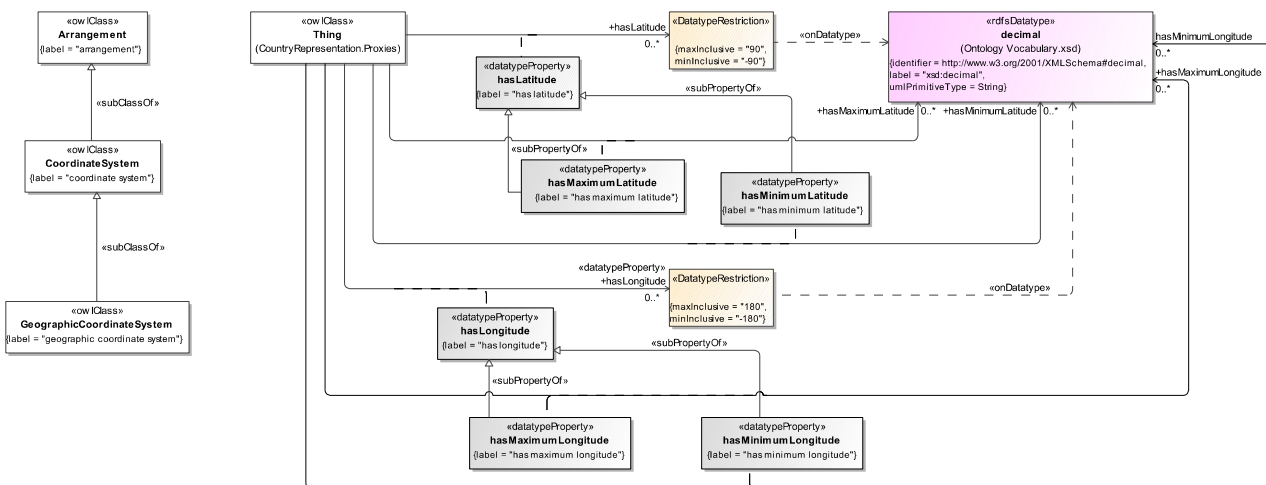


Figure 9.24 Definitions of Locations, Geopolitical Entity, and Approximate Coordinates

Figure 9.24 defines concepts including locations, geopolitical entities, and approximate coordinates. Note that approximate coordinates is underspecified in order to facilitate mappings to various coordinate systems, as required by

specific applications or situations relevant to geographic coordinate systems, including properties for representation of latitude and longitude for use in mapping to geographic region descriptions that include this information, such as the CIA World Factbook and Geonames.

Issue LCC-4 – replace figure 9.3 (now 9.5 after insertions and renumbering)

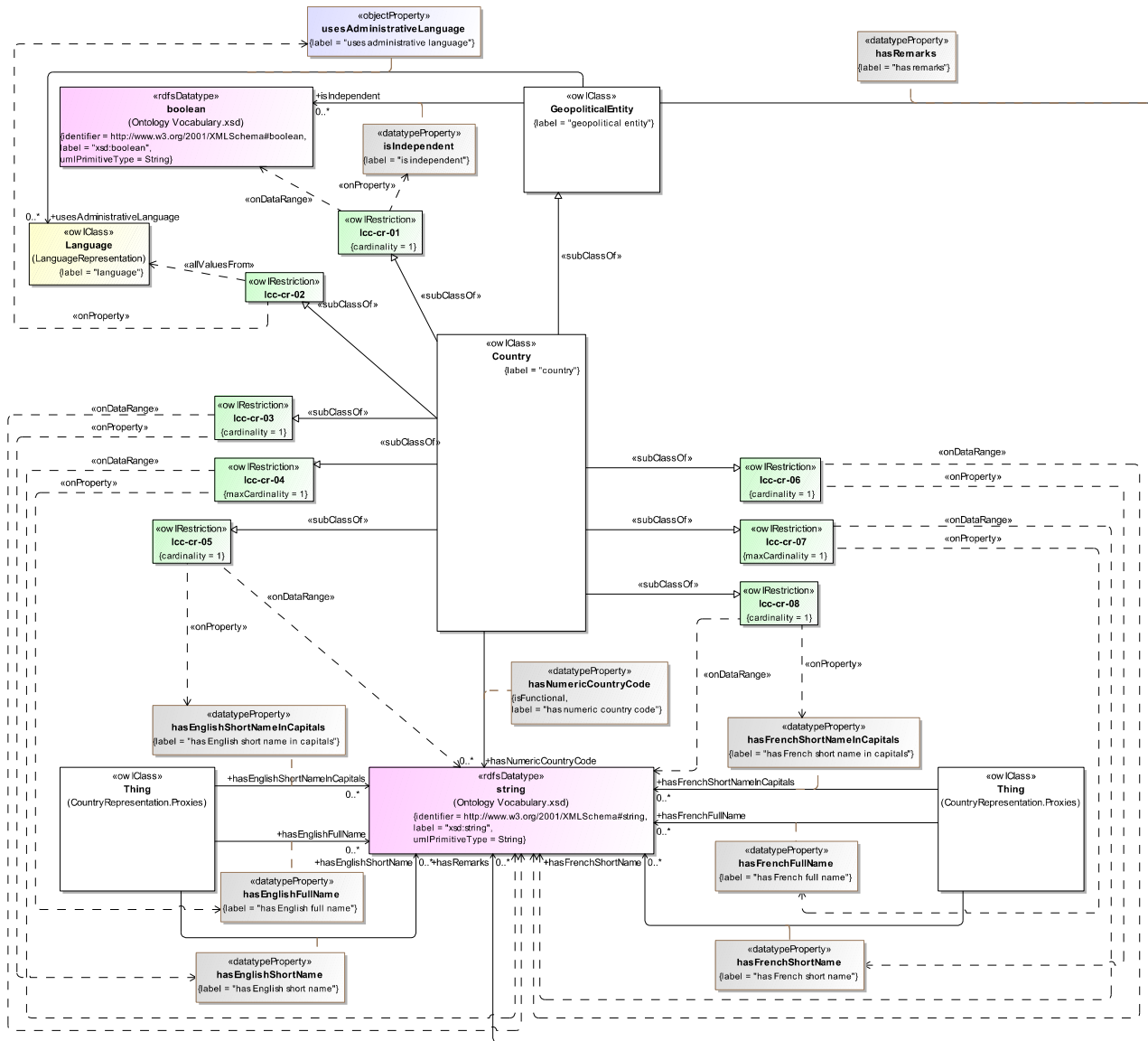


Figure 9.53 Definition of Country

Figure 9.53 expands on the definition of a country, including constraints indicating that the some of the English and French names are required in the ISO 3166 specification.

Issue LCC-4 – Delete now redundant figures originally numbered 9.4, 9.5, and 9.6

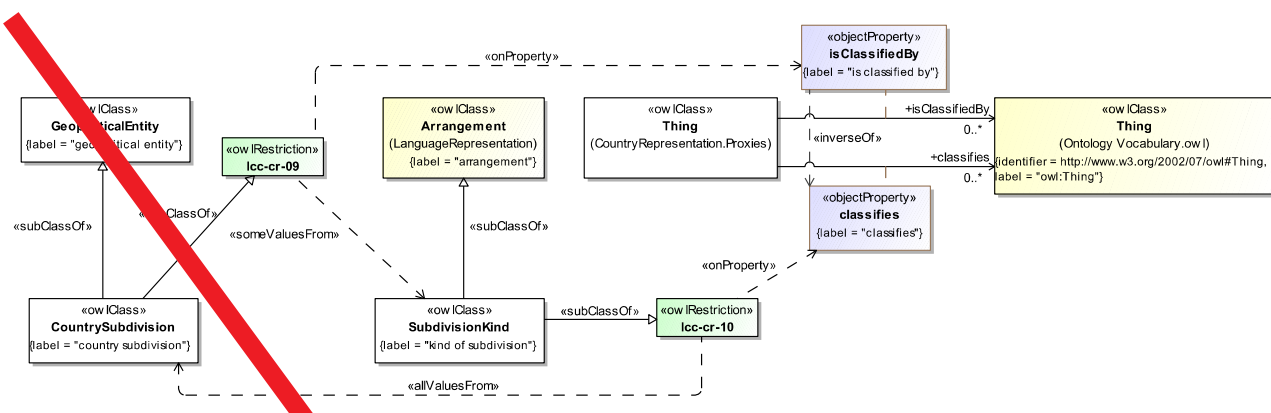


Figure 9.4 Definition of Country Subdivision

Figure 9.4 elaborates the definition of country subdivision and on subdivision kind, which is a classification scheme for subdivisions in ISO 3166-2.

Issue LCC-14 – replace Figure 9.5

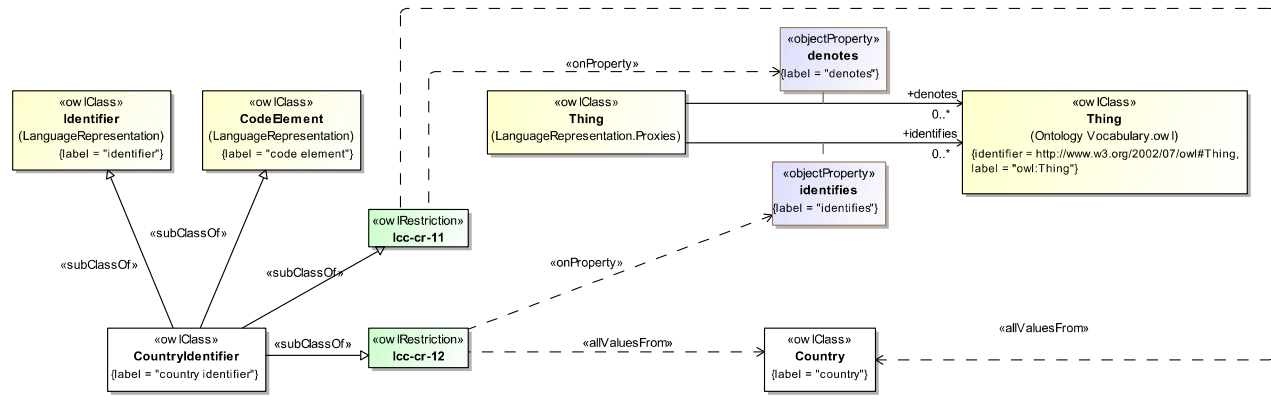


Figure 9.5 Definition of Country Identifier

Figure 9.5 shows the definition of a country identifier, and Figure 9.6, below, provides the definition of a country subdivision code.

Issue LCC-14 – replace Figure 9.6

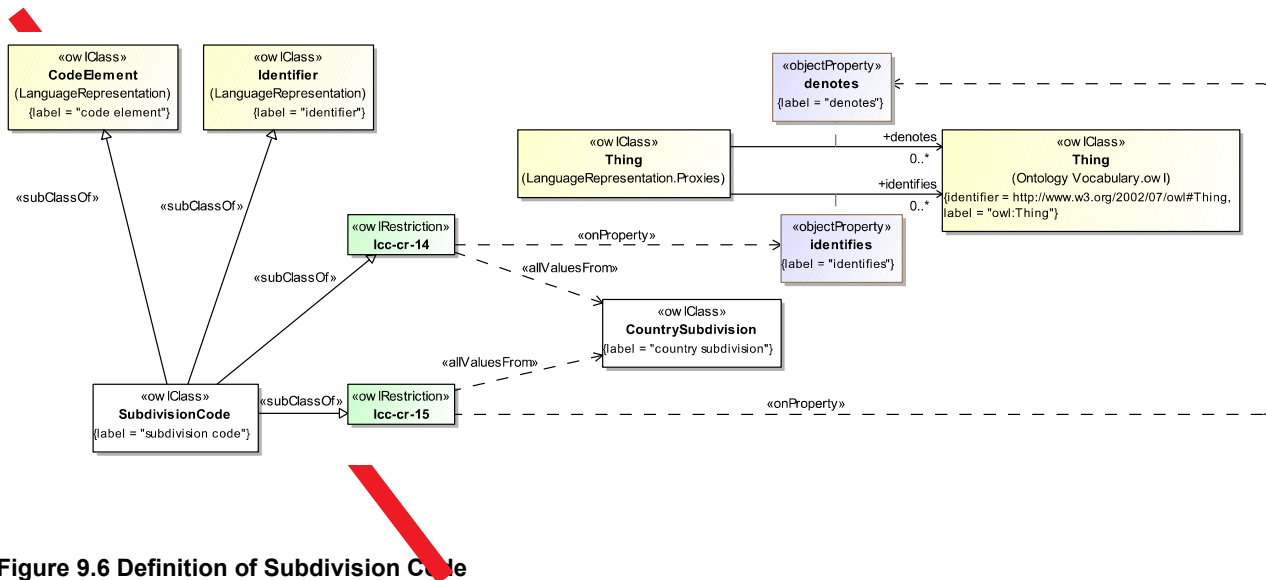


Figure 9.6 Definition of Subdivision Code

The detailed annotations and axioms that comprise the ontology are provided in Table 9-3, below.

[Issue LCC-14 – revise CountryIdentifier, remove Country and Subdivision tags](#)

[Issue LCC-4 – revise Table 9-3 per the items identified in the resolution](#)

[Issue LCC-1 – revise Table 9-3 to replace ApproximateCoordinates with CoordinateSystem and GeographicCoordinateSystem and relevant properties](#)

Table 9-3 Country Representation Ontology Details

Classes

Name	Annotations	Class Expressions
Alpha2Code (alpha-2 code)	<p>Definition: thea digraph representing thea country nameor geographic region</p> <p>Note: This part of ISO 3166 establishes an alphabetic 2-character (alpha-2) code which is generally recommended to represent country names and which is the basis for the codes laid down in ISO 3166-2 and ISO 3166-3 and for other international standards and recommendations. The alpha-2 code uses combinations, in upper case, of two letters of the 26-character Roman alphabet (ignoring diacritic signs) from the range AA to ZZ.</p>	<p>Parent Class: CountryGeographicRegionIdentifier</p>
Alpha3Code (alpha-3 code)	<p>Definition: thea trigraph representing thea country nameor geographic region</p> <p>Note: This part of ISO 3166 also provides an alphabetic 3-character (alpha-3) code, based on the alpha-2 code, and using combinations, in upper case, of three letters of the 26-character Roman alphabet (ignoring diacritic signs) from the range AAA to ZZZ, for use in cases where a specific need has been identified.</p> <p>Attention is drawn to the fact that other 3-letter codes for some country names are used in other contexts (e.g., US-MARC standard).</p>	<p>Parent Class: CountryGeographicRegionIdentifier</p>

ApproximateCoordinates (approximate coordinates)	<u>Definition:</u> approximate latitude and longitude coordinates (approximate rectangle) corresponding to the location of the geopolitical entity according to the UN	<u>Parent Class:</u> Location
CoordinateSystem (coordinate system)	<u>Definition:</u> a system that uses one or more numbers, or coordinates, to uniquely determine the position of a point or other geometric element on a planar or spherical surface <u>Note:</u> Without a concise definition of the coordinate system used to represent a point, it is difficult to change to a new coordinate system. Changing coordinate systems is required when integrating data from different sources into a common coordinate system. <u>Source:</u> http://edndoc.esri.com/arcscde/9.1/general_topics/what_coord_sys.htm <u>Source:</u> https://en.wikipedia.org/wiki/Coordinate_system	<u>Parent Class:</u> Arrangement
Country (country)	<u>Definition:</u> a geopolitical entity representing a country or dependent territory according to the United Nations <u>Note:</u> Countries are named using the English short country names officially used by the ISO. The ISO uses country names from United Nations sources and hence, names such as Palestinian Territory, Occupied and Taiwan, Province of China reflect political status within the UN.	<u>Parent Class:</u> GeopoliticalEntity <u>Property Restriction:</u> = 1 hasEnglishShortName.string (lcc-cr-03) <u>Property Restriction:</u> ≤ 1 hasEnglishFullName.string (lcc-cr-04) <u>Property Restriction:</u> = 1 hasEnglishShortNameInCapitals.string (lcc-cr-05) <u>Property Restriction:</u> = 1 hasFrenchShortName.string (lcc-cr-06) <u>Property Restriction:</u> ≤ 1 hasFrenchFullName.string (lcc-cr-07) <u>Property Restriction:</u> = 1 hasFrenchShortNameInCapitals.string (lcc-cr-08) <u>Property Restriction:</u> ∇ usesAdministrativeLanguage.Language (lcc-cr-02) <u>Property Restriction:</u> = 1 isIndependent.boolean (lcc-cr-01)
CountryGeographicRegion Identifier (<u>countrygeographic region identifier</u>)	<u>Definition:</u> similar to the language identifier specified in ISO 639 , a string of letters assigned to a country or other geopolitical entity namegeographic region specified in ISO 3166-1 for the purpose of uniquely representing it	<u>Parent Class:</u> CodeElement <u>Parent Class:</u> Identifier <u>Property Restriction:</u> = 1 hasCountryTag.string (lcc-cr-13) <u>Property Restriction:</u> ∇ denotes.Country (lcc-cr-11) <u>Property Restriction:</u> ∇ identifies.Country (lcc-cr-12)
CountrySubdivision (country subdivision)	<u>Definition:</u> a geopolitical entity, typically a division of a country, dependency, or other area of special geopolitical	<u>Parent Class:</u> GeopoliticalEntity

	interest related to a country or other geopolitical entity <u>referenced in ISO 3166-1</u>	<u>Property Restriction:</u> \exists isClassifiedBy.SubdivisionKind (lcc-cr-09)
GeographicCoordinateSystem (geographic coordinate system)	<u>Definition:</u> a three-dimensional reference system that locates points on the Earth's surface <u>Note:</u> The unit of measure is usually decimal degrees. A point has two coordinate values, latitude and longitude. Latitude and longitude measure angles. <u>Example:</u> The three most widely used systems for indicating point locations in the United States are (1) latitude and longitude [and optionally elevation], (2) Universal Transverse Mercator (UTM) system, and (3) State Plane Coordinate Systems (SPCS). <u>Source:</u> http://edndoc.esri.com/arcscde/9.1/general_topics/what_coordinate_sys.htm <u>Source:</u> https://pubs.usgs.gov/circ/1983/0878b/report.pdf	<u>Parent Class:</u> CoordinateSystem
GeographicRegion (geographic region)	<u>Definition:</u> an area, especially part of a country or the world having definable characteristics but not always fixed boundaries <u>Source:</u> https://en.oxforddictionaries.com/definition/region	<u>Parent Class:</u> Location
GeopoliticalEntity (geopolitical entity)	<u>Definition:</u> any country, federal province, city or other administrative unit that represents a geophysical location and has some political identity	<u>Parent Class:</u> LocationGeographicRegion
Location (location)	<u>Definition:</u> a named geographic place, a place or position in time and/or space, including a virtual place	
SubdivisionCode (subdivision code)	<u>Definition:</u> similar to the language identifier specified in ISO 639, a string of letters assigned to a country-subdivision for the purpose of uniquely representing it	<u>Parent Class:</u> CodeElement <u>Parent Class:</u> Identifier <u>Property Restriction:</u> \forall denotes.CountrySubdivision (lcc-cr-15) <u>Property Restriction:</u> \forall identifies.CountrySubdivision (lcc-cr-14)
SubdivisionGeographicRegionKind (subdivisiongeographic region kind)	<u>Definition:</u> a classification scheme for subdivisions of a geopolitical entitygeographic regions, including but not limited to subdivisions of a geopolitical entity, as defined in ISO 3166-2 (noting that there may be more than one kind for a given country or other entity)	<u>Parent Class:</u> Arrangement <u>Property Restriction:</u> \forall classifies.CountrySubdivisionGeographicRegion (lcc-cr-10)
Territory (territory)	<u>Definition:</u> a geopolitical entity, typically considered an area of special geopolitical interest, related to a country or other geopolitical entity <u>Note:</u> Certain territories are included in the ISO 3166-2 code set without an alpha 2 or alpha 3 code. In these cases, the numeric code for the subregion may have more than 3 characters in their corresponding numeric region codes.	<u>Parent Class:</u> GeopoliticalEntity

Properties

Name	Annotations	Property Axioms
classifies (classifies)	Definition: arranges in categories according to shared characteristics	
hasApproximateCoordinates (has approximate coordinates)	Definition: relates a country to its approximate coordinates Direct source: http://www.fao.org/countryprofiles/geoinfo/en/	Parent Property: has Domain: GeopoliticalEntity Range: ApproximateCoordinates
hasPart (has part)	Definition: indicates any portion of something, regardless of whether the portion itself is attached to the remainder or detached; cognitively salient or arbitrarily demarcated; self-connected or disconnected; homogeneous or gerrymandered; material or immaterial; extended or unextended; spatial or temporal Direct source: Stanford Encyclopedia of Philosophy at http://plato.stanford.edu/entries/mereology/	
hasSubdivisionRegion (has subdivision region)	Definition: relates a <u>geopolitical entity geographic region</u> to another <u>geopolitical entity geographic region</u> that is a <u>subdivision designated subregion</u> of it	Parent Property: hasPart Domain: <u>GeopoliticalEntityGeographicRegion</u> Range: <u>CountrySubdivisionGeographicRegion</u>
hasTerritory (has territory)	Definition: relates a country to another geopolitical entity in ISO 3166 that is a territory of that country Note: The isIndependent flag indicates whether or not a 'country' is in fact independent, but does not indicate whether or not it is self-governing. The UN FAO ontology distinguishes between these two cases, which can be added as an extension if required in a subsequent version of this specification. Direct source: http://www.fao.org/countryprofiles/geoinfo/en/	Parent Property: hasPart Domain: Country Range: GeopoliticalEntity
isClassifiedBy (is classified by)	Definition: indicates the classifier used to characterize something	Inverse: classifies
isPartOf (is a part of)	Definition: relates something to another thing that it is some component or portion of, regardless of how that whole-part relationship is manifested, i.e., attached to the remainder or detached; cognitively salient or arbitrarily demarcated; self-connected or disconnected;	Property axiom: Transitive Inverse: hasPart

	<p>homogeneous or gerrymandered; material or immaterial; extended or unextended; spatial or temporal; the most generic part relation, reflexive, asymmetric, and transitive</p> <p><u>Direct source: Stanford Encyclopedia of Philosophy at http://plato.stanford.edu/entries/mereology/</u></p>	
isSubdivisionregionOf (is a subdivisionregion of)	<p><u>Definition:</u> relates a country-subdivision<u>geographic region</u> to geopolitical entity<u>another geographic region</u> that it is a part of</p>	<p><u>Parent Property:</u> isPartOf</p> <p><u>Domain:</u> Country<u>Subdivision</u>GeographicRegion<u>n</u></p> <p><u>Range:</u> GeopoliticalEntity<u>GeographicRegion</u></p> <p><u>Inverse:</u> hasSubdivisionregion</p>
isUsedBy (is used by)	<p><u>Definition:</u> is employed by in the process of accomplishing something</p>	
uses (uses)	<p><u>Definition:</u> employs as a means of accomplishing some task or achieving some result</p>	<p><u>Inverse:</u> isUsedBy</p>
usesAdministrativeLanguage uses administrative language)	<p><u>Definition:</u> relates a country or geopolitical entity to the administrative language(s) that entity uses for international communications</p>	<p><u>Parent Property:</u> uses</p> <p><u>Domain:</u> Country</p> <p><u>Range:</u> Language</p>
hasEnglishFullName (has English full name)	<p><u>Definition:</u> the full name, if different from the short form of the country name, in lower case; the formal title as notified by the country concerned to the UN Secretary General</p>	<p><u>Parent Property:</u> hasEnglishName</p> <p><u>Range:</u> string</p>
hasEnglishShortName (has English short name)	<p><u>Definition:</u> the short form of the country name, in English</p>	<p><u>Parent Property:</u> hasEnglishName</p> <p><u>Range:</u> string</p>
hasEnglishShortNameInCapitals (has English short name in capitals)	<p><u>Definition:</u> the short form of the country name, in English (capitals)</p>	<p><u>Parent Property:</u> hasEnglishName</p> <p><u>Range:</u> string</p>
hasFrenchFullName (has French full name)	<p><u>Definition:</u> the full name, if different from the short form of the country name, in lower case; the formal title as notified by the country concerned to the UN Secretary General</p>	<p><u>Parent Property:</u> hasFrenchName</p> <p><u>Range:</u> string</p>
hasFrenchShortName (has French short name)	<p><u>Definition:</u> the short form of the country name, in French</p>	<p><u>Parent Property:</u> hasFrenchName</p> <p><u>Range:</u> string</p>
hasFrenchShortNameInCapitals (has French short name in capitals)	<p><u>Definition:</u> the short form of the country name, in French (capitals)</p>	<p><u>Parent Property:</u> hasFrenchName</p> <p><u>Range:</u> string</p>
hasLatitude (has latitude)	<p><u>Definition:</u> <u>the angle formed by the intersection of a line perpendicular to the Earth's surface at a point and the plane of the Equator</u></p> <p><u>Note:</u> <u>Points north of the Equator have positive latitude values, while points</u></p>	<p><u>Range:</u> xsd:decimal [≥ -90, ≤ 90]</p>

	<p>south have negative values. Latitude values range from minus 90 to plus 90 degrees. Lines of latitude are also called parallels because a particular value of latitude forms a circle parallel to the Equator.</p> <p>Source: http://edndoc.esri.com/arcscde/9.1/general_topics/what_coord_sys.htm</p>	
hasLocalShortName (has local short name)	<p>Definition: the local, regional, or cultural, or <u>indigenous</u> short form of the country name</p>	<p>Parent Property: <u>hasName</u></p> <p>Range: string</p>
hasLongitude (has longitude)	<p>Definition: the angle between a plane that passes through the point and the North and South poles, and a reference plane</p> <p>Note: The reference plane is known as the prime meridian. The most common prime meridian passes through Greenwich, United Kingdom. Other examples of prime meridians in use pass through Paris and Bogota. Longitude values range from minus 180 to plus 180 degrees.”</p> <p>Source: http://edndoc.esri.com/arcscde/9.1/general_topics/what_coord_sys.htm</p>	<p>Range: xsd:decimal [<u>>= -180, <=180</u>]</p>
hasMaximumLatitude (has maximum latitude)	<p>Definition: a maximum latitude with respect to a range</p>	<p>Parent Property: <u>hasLatitude</u></p> <p>Range: xsd:decimal</p>
hasMaximumLongitude (has maximum longitude)	<p>Definition: a maximum longitude with respect to a range</p>	<p>Parent Property: <u>hasLongitude</u></p> <p>Range: xsd:decimal</p>
hasMinimumLatitude (has minimum latitude)	<p>Definition: a minimum latitude with respect to a range</p>	<p>Parent Property: <u>hasLatitude</u></p> <p>Range: xsd:decimal</p>
hasMinimumLongitude (has minimum longitude)	<p>Definition: a minimum longitude with respect to a range</p>	<p>Parent Property: <u>hasLongitude</u></p> <p>Range: xsd:decimal</p>
hasNumericCountryRegionCode (has numeric <u>country</u> <u>region</u> code)	<p>Definition: Also called numeric-3 code in the specification, the three-digit numeric code representing the country name.</p> <p>Recognizing that a numeric code for country names is of advantage (e.g. to provide language independence), a three-digit numeric (numeric-3) code from the range 000 to 899 is also provided in this part of ISO 3166. It is made available by the United Nations Statistics Division: a three-digit numeric code assigned to a region according to some code set.</p> <p>Note: For certain territories that do not have an alternate designation (i.e. country or country subdivision code in</p>	<p>Domain: Country</p> <p>Range: string</p> <p>Property axiom: Functional</p>

	ISO 3166), the corresponding numeric code may have four digits.	
hasRemarks (has remarks)	Definition: Remarks, such as other widely-used country names, and names of geographically separated territories, and so forth covered by the main entry in the list (the latter are indexed in Annex A)	Domain: GeopoliticalEntity Range: string
isIndependent (is independent)	Definition: indicates whether a geopolitical entity stands alone or is part of another country from an international political perspective	Domain: GeopoliticalEntity Range: boolean

9.4 Ontology: ISO 3166-1 Country Codes

This ontology represents the subset of the ISO 3166 standard that include the actual ISO 3166-1 country codes, with the ontology and codes for the other parts of the standard represented in dependent models.

[Issue LCC-2 – revise versionIRI, add change note and issues tag](#)

[Issue LCC-3 – revise versionIRI](#)

Table 9-4 ISO 3166-1 Country Codes Ontology Metadata

Metadata Term	Value
sm:filename	ISO3166-1-CountryCodes.rdf
sm:fileAbbreviation	lcc-3166-1
OntologyIRI	http://www.omg.org/spec/LCC/Countries/ISO3166-1-CountryCodes/
owl:versionIRI	http://www.omg.org/spec/LCC/2017508+101/Countries/ISO3166-1-CountryCodes/
sm:dependsOn	http://www.omg.org/spec/LCC/Languages/LanguageRepresentation/ http://www.omg.org/spec/LCC/Languages/ISO639-1-LanguageCodes/ http://www.omg.org/spec/LCC/Countries/CountryRepresentation/
skos:changeNote	The http://www.omg.org/spec/LCC/20151101/Countries/ISO3166-1-CountryCodes.rdf version of this ontology has been revised to reflect the issues addressed by the LCC 1.0 FTF report. The country codes and related metadata contained herein are current as of the July 2017 revision to the online code set.
dct:issues	2017-07-20T22:26:02.631805+02:00

Note that this ontology consists entirely of individuals representing the ISO 3166-1 code set, countries, and country codes, and therefore is not modeled herein. The contents of this ontology are considered normative, however, and are provided in machine-readable form.

9.5 Ontology: ISO 3166-2 Subdivision Codes

This ontology represents the subset of the ISO 3166 standard that include the actual ISO 3166-2 subdivision codes, with the ontology and codes for the other parts of the standard represented in models that this ontology depends on.

Issue LCC-11 – delete scope note

Scope note: This initial release of the ontology covers North America only. Implementers should consider this as a guide for extension – to add more subdivisions and codes for other parts of the world as required for their applications, and to make requests via the OMG issues list for additional subdivisions for specific geopolitical areas.

Issue LCC-2 – revise version IRI, add change note

Issue LCC-11 – revise version IRI

Table 9-5 ISO 3166-2 Subdivision Codes Ontology Metadata

Metadata Term	Value
sm:filename	ISO3166-2-SubdivisionCodes.rdf
sm:fileAbbreviation	lcc-3166-2
OntologyIRI	http://www.omg.org/spec/LCC/Countries/ISO3166-2-SubdivisionCodes/
owl:versionIRI	http://www.omg.org/spec/LCC/20175081101/Countries/ISO3166-2-SubdivisionCodes/
sm:dependsOn	http://www.omg.org/spec/LCC/Languages/LanguageRepresentation/ http://www.omg.org/spec/LCC/Languages/ISO639-1-LanguageCodes/ http://www.omg.org/spec/LCC/Countries/CountryRepresentation/ http://www.omg.org/spec/LCC/Countries/ISO3166-1-CountryCodes/
<u>skos:changeNote</u>	<u>The http://www.omg.org/spec/LCC/20151101/Countries/ISO3166-2-SubdivisionCodes.rdf version of this ontology has been revised to reflect the issues addressed by the LCC 1.0 FTF report. The subdivision codes and related metadata contained herein are current as of the July 2017 revision to the online code set.</u>

Issue LCC-11 – revise note regarding the contents of the codes ontology

Note that this ontology consists entirely of individuals representing the ISO 3166-2 code set, subdivisions, and subdivision codes, and therefore is not modeled herein. The contents of this ontology are considered normative, however, and are provided in machine-readable form. Note that the basic ISO 3166-2 ontology defines common code-related individuals only, and does not include any regional content. Regional content is included, by country, in the Regions sub-module. This module includes one ontology per country that submitted region codes to the United Nations / ISO in the latest release of the codes. See Table 7.2 for the structure of the URIs corresponding to the regional code ontologies and Annex B for a complete list of the namespaces and corresponding countries for which region codes are available.

Issue LCC-16 – insert section 9.6 for the M49 codes

9.6 Ontology: Standard Country or Area Codes for Statistical Use (M49)

This ontology represents the United Nations publication 'Standard Country or Area Codes for Statistical Use' originally published as Series M, No. 49 and now commonly referred to as the M49 standard. The assignment of countries or areas to specific groupings is for statistical convenience and does not imply any assumption regarding political or other

affiliation of countries or territories by the United Nations. The codes included herein are current as of the version IRI for this ontology.

Table 9-6 M49 Region Codes Ontology Metadata

Metadata Term	Value
sm:filename	UN-M49-RegionCodes.rdf
sm:fileAbbreviation	lcc-m49
OntologyIRI	http://www.omg.org/spec/LCC/Countries/UN-M49-RegionCodes/
owl:versionIRI	http://www.omg.org/spec/LCC/20170801/Countries/UN-M49-RegionCodes/
sm:dependsOn	http://www.omg.org/spec/LCC/Languages/LanguageRepresentation/ http://www.omg.org/spec/LCC/Countries/CountryRepresentation/ http://www.omg.org/spec/LCC/Countries/ISO3166-1-CountryCodes/

Note that this ontology consists entirely of individuals representing the UN M49 region code set, and therefore is not modeled herein. The contents of this ontology are considered normative, however, and are provided in machine-readable form.

Annex A: Deliverables (normative)

The LCC ontologies are delivered as (1) RDF/XML serialized OWL (normative and definitive), (2) UML XMI, serialized from UML with the ODM profiles for RDF and OWL applied (normative), (3) ODM XMI, serialized based on the ODM MOF metamodels for RDF and OWL (normative), and (4) Visual Ontology Modeler (VOM) model files, based on the VOM plug-in to MagicDraw (ancillary). If there are differences between the OWL files, ODM XMI, and UML XMI, the OWL files take precedence, followed by the UML XMI, and finally the ODM XMI.

Regardless of their form, each of the ontologies included in Languages, Countries and Codes (LCC) makes normative reference to the DCMI Dublin Core Metadata Terms⁵, W3C Simple Knowledge Organization System (SKOS) Recommendation⁶, and the OMG Architecture Board's Specification Metadata Recommendation⁷, which are not part of this specification.

[Issue LCC-11 – revise note regarding tools source](#)

The individual RDF/XML files are organized by module (directory), and within a given module, alphabetically by name, as shown in the URI structure for each individual OWL file. These files are UTF-8 conformant XML Schema files that are also OWL 2 compliant, and may be examined using any text editor, XML editor, or RDF or OWL editor. They have been verified for syntactic correctness via the W3C RDF Validator and University of Manchester OWL 2 Validator. They have also been checked for logical consistency using the Pellet OWL 2 reasoner from ~~Complexible~~ (formerly Clark & Parsia)Stardog Union (formerly Complexible, and prior to that, Clark & Parsia) as well as the HermiT OWL 2 reasoner from Oxford University. It is anticipated that the OWL ontologies will be dereference-able, together with technical documentation (HTML) from the OMG site.

[Issue LCC-11 – insert Annex B](#)

⁵ <http://www.dublincore.org/documents/dcmi-terms/>

⁶ <http://www.w3.org/TR/2009/REC-skos-reference-20090818/>

⁷ <http://www.omg.org/techprocess/ab/SpecificationMetadata/>

This page intentionally left blank.

Annex B: ISO 3166-2 Regions

(normative)

This Annex lists the machine-readable files for country subdivisions, which are a normative part of the Languages, Countries, and Codes (LCC) specification. There is one file for each country that has subdivisions or territories as defined by ISO 3166. As stated in clause 9.5, these files are all in a module (subdirectory) called Regions, and are

named according to the 2 character ISO-3166 code for the country. The files are automatically generated from the ISO 3166 XML file according to the algorithm described in Annex C.

Table B-1 lists the ontologies that contain the subdivision codes that comprise the ISO 3166-2 code set, by country, including their namespace prefix, country name, and canonical namespace.

Table B-1 ISO 3166-2 Country Subdivision Ontologies

Namespace Prefix	Country	Namespace
lcc-3166-2-ad	Andorra	http://www.omg.org/spec/LCC/Countries/Regions/ISO3166-2-SubdivisionCodes-AD/
lcc-3166-2-ae	United Arab Emirates	http://www.omg.org/spec/LCC/Countries/Regions/ISO3166-2-SubdivisionCodes-AE/
lcc-3166-2-af	Afghanistan	http://www.omg.org/spec/LCC/Countries/Regions/ISO3166-2-SubdivisionCodes-AF/
lcc-3166-2-ag	Antigua and Barbuda	http://www.omg.org/spec/LCC/Countries/Regions/ISO3166-2-SubdivisionCodes-AG/
lcc-3166-2-al	Albania	http://www.omg.org/spec/LCC/Countries/Regions/ISO3166-2-SubdivisionCodes-AL/
lcc-3166-2-am	Armenia	http://www.omg.org/spec/LCC/Countries/Regions/ISO3166-2-SubdivisionCodes-AM/
lcc-3166-2-ao	Angola	http://www.omg.org/spec/LCC/Countries/Regions/ISO3166-2-SubdivisionCodes-AO/
lcc-3166-2-ar	Argentina	http://www.omg.org/spec/LCC/Countries/Regions/ISO3166-2-SubdivisionCodes-AR/
lcc-3166-2-as	American Samoa	http://www.omg.org/spec/LCC/Countries/Regions/ISO3166-2-SubdivisionCodes-AS/
lcc-3166-2-at	Austria	http://www.omg.org/spec/LCC/Countries/Regions/ISO3166-2-SubdivisionCodes-AT/
lcc-3166-2-au	Australia	http://www.omg.org/spec/LCC/Countries/Regions/ISO3166-2-SubdivisionCodes-AU/
lcc-3166-2-az	Azerbaijan	http://www.omg.org/spec/LCC/Countries/Regions/ISO3166-2-SubdivisionCodes-AZ/
lcc-3166-2-ba	Bosnia and Herzegovina	http://www.omg.org/spec/LCC/Countries/Regions/ISO3166-2-SubdivisionCodes-BA/
lcc-3166-2-bb	Barbados	http://www.omg.org/spec/LCC/Countries/Regions/ISO3166-2-SubdivisionCodes-BB/
lcc-3166-2-bd	Bangladesh	http://www.omg.org/spec/LCC/Countries/Regions/ISO3166-2-SubdivisionCodes-BD/
lcc-3166-2-be	Belgium	http://www.omg.org/spec/LCC/Countries/Regions/ISO3166-2-SubdivisionCodes-BE/
lcc-3166-2-bf	Burkina Faso	http://www.omg.org/spec/LCC/Countries/Regions/ISO3166-2-SubdivisionCodes-BF/
lcc-3166-2-bg	Bulgaria	http://www.omg.org/spec/LCC/Countries/Regions/ISO3166-2-SubdivisionCodes-BG/
lcc-3166-2-bh	Bahrain	http://www.omg.org/spec/LCC/Countries/Regions/ISO3166-2-SubdivisionCodes-BH/

<u>lcc-3166-2- bi</u>	<u>Burundi</u>	<u>http://www.omg.org/spec/LCC/Countries/Regions/ISO3166-2-SubdivisionCodes-BI/</u>
<u>lcc-3166-2- bj</u>	<u>Benin</u>	<u>http://www.omg.org/spec/LCC/Countries/Regions/ISO3166-2-SubdivisionCodes-BJ/</u>
<u>lcc-3166-2- bn</u>	<u>Brunei Darussalam</u>	<u>http://www.omg.org/spec/LCC/Countries/Regions/ISO3166-2-SubdivisionCodes-BN/</u>
<u>lcc-3166-2- bo</u>	<u>Bolivia</u>	<u>http://www.omg.org/spec/LCC/Countries/Regions/ISO3166-2-SubdivisionCodes-BO/</u>
<u>lcc-3166-2- bq</u>	<u>Bonaire, Sint Eustatius and Saba</u>	<u>http://www.omg.org/spec/LCC/Countries/Regions/ISO3166-2-SubdivisionCodes-BO/</u>
<u>lcc-3166-2- br</u>	<u>Brazil</u>	<u>http://www.omg.org/spec/LCC/Countries/Regions/ISO3166-2-SubdivisionCodes-BR/</u>
<u>lcc-3166-2- bs</u>	<u>Bahamas</u>	<u>http://www.omg.org/spec/LCC/Countries/Regions/ISO3166-2-SubdivisionCodes-BS/</u>
<u>lcc-3166-2- bt</u>	<u>Bhutan</u>	<u>http://www.omg.org/spec/LCC/Countries/Regions/ISO3166-2-SubdivisionCodes-BT/</u>
<u>lcc-3166-2- bw</u>	<u>Botswana</u>	<u>http://www.omg.org/spec/LCC/Countries/Regions/ISO3166-2-SubdivisionCodes-BW/</u>
<u>lcc-3166-2- by</u>	<u>Belarus</u>	<u>http://www.omg.org/spec/LCC/Countries/Regions/ISO3166-2-SubdivisionCodes-BY/</u>
<u>lcc-3166-2- bz</u>	<u>Belize</u>	<u>http://www.omg.org/spec/LCC/Countries/Regions/ISO3166-2-SubdivisionCodes-BZ/</u>
<u>lcc-3166-2- ca</u>	<u>Canada</u>	<u>http://www.omg.org/spec/LCC/Countries/Regions/ISO3166-2-SubdivisionCodes-CA/</u>
<u>lcc-3166-2- cd</u>	<u>Congo, Democratic Republic Of</u>	<u>http://www.omg.org/spec/LCC/Countries/Regions/ISO3166-2-SubdivisionCodes-CD/</u>
<u>lcc-3166-2- cf</u>	<u>Central African Republic</u>	<u>http://www.omg.org/spec/LCC/Countries/Regions/ISO3166-2-SubdivisionCodes-CF/</u>
<u>lcc-3166-2- cg</u>	<u>Congo</u>	<u>http://www.omg.org/spec/LCC/Countries/Regions/ISO3166-2-SubdivisionCodes-CG/</u>
<u>lcc-3166-2- ch</u>	<u>Switzerland</u>	<u>http://www.omg.org/spec/LCC/Countries/Regions/ISO3166-2-SubdivisionCodes-CH/</u>
<u>lcc-3166-2- ci</u>	<u>Côte d'Ivoire</u>	<u>http://www.omg.org/spec/LCC/Countries/Regions/ISO3166-2-SubdivisionCodes-CI/</u>
<u>lcc-3166-2- ck</u>	<u>Cook Islands</u>	<u>http://www.omg.org/spec/LCC/Countries/Regions/ISO3166-2-SubdivisionCodes-CK/</u>
<u>lcc-3166-2- cl</u>	<u>Chile</u>	<u>http://www.omg.org/spec/LCC/Countries/Regions/ISO3166-2-SubdivisionCodes-CL/</u>
<u>lcc-3166-2- cm</u>	<u>Cameroon</u>	<u>http://www.omg.org/spec/LCC/Countries/Regions/ISO3166-2-SubdivisionCodes-CM/</u>
<u>lcc-3166-2- cn</u>	<u>China</u>	<u>http://www.omg.org/spec/LCC/Countries/Regions/ISO3166-2-SubdivisionCodes-CN/</u>
<u>lcc-3166-2- co</u>	<u>Colombia</u>	<u>http://www.omg.org/spec/LCC/Countries/Regions/ISO3166-2-SubdivisionCodes-CO/</u>
<u>lcc-3166-2- cr</u>	<u>Costa Rica</u>	<u>http://www.omg.org/spec/LCC/Countries/Regions/ISO3166-2-SubdivisionCodes-CR/</u>
<u>lcc-3166-2- cu</u>	<u>Cuba</u>	<u>http://www.omg.org/spec/LCC/Countries/Regions/ISO3166-2-SubdivisionCodes-CU/</u>

<u>lcc-3166-2- cv</u>	<u>Cabo Verde</u>	<u>http://www.omg.org/spec/LCC/Countries/Regions/ISO3166-2-SubdivisionCodes-CV/</u>
<u>lcc-3166-2- cy</u>	<u>Cyprus</u>	<u>http://www.omg.org/spec/LCC/Countries/Regions/ISO3166-2-SubdivisionCodes-CY/</u>
<u>lcc-3166-2- cz</u>	<u>Czechia</u>	<u>http://www.omg.org/spec/LCC/Countries/Regions/ISO3166-2-SubdivisionCodes-CZ/</u>
<u>lcc-3166-2- de</u>	<u>Germany</u>	<u>http://www.omg.org/spec/LCC/Countries/Regions/ISO3166-2-SubdivisionCodes-DE/</u>
<u>lcc-3166-2- dj</u>	<u>Djibouti</u>	<u>http://www.omg.org/spec/LCC/Countries/Regions/ISO3166-2-SubdivisionCodes-DJ/</u>
<u>lcc-3166-2- dk</u>	<u>Denmark</u>	<u>http://www.omg.org/spec/LCC/Countries/Regions/ISO3166-2-SubdivisionCodes-DK/</u>
<u>lcc-3166-2- dm</u>	<u>Dominica</u>	<u>http://www.omg.org/spec/LCC/Countries/Regions/ISO3166-2-SubdivisionCodes-DM/</u>
<u>lcc-3166-2- do</u>	<u>Dominican Republic</u>	<u>http://www.omg.org/spec/LCC/Countries/Regions/ISO3166-2-SubdivisionCodes-DO/</u>
<u>lcc-3166-2- dz</u>	<u>Algeria</u>	<u>http://www.omg.org/spec/LCC/Countries/Regions/ISO3166-2-SubdivisionCodes-DZ/</u>
<u>lcc-3166-2- ec</u>	<u>Ecuador</u>	<u>http://www.omg.org/spec/LCC/Countries/Regions/ISO3166-2-SubdivisionCodes-EC/</u>
<u>lcc-3166-2- ee</u>	<u>Estonia</u>	<u>http://www.omg.org/spec/LCC/Countries/Regions/ISO3166-2-SubdivisionCodes-EE/</u>
<u>lcc-3166-2- eg</u>	<u>Egypt</u>	<u>http://www.omg.org/spec/LCC/Countries/Regions/ISO3166-2-SubdivisionCodes-EG/</u>
<u>lcc-3166-2- er</u>	<u>Eritrea</u>	<u>http://www.omg.org/spec/LCC/Countries/Regions/ISO3166-2-SubdivisionCodes-ER/</u>
<u>lcc-3166-2- es</u>	<u>Spain</u>	<u>http://www.omg.org/spec/LCC/Countries/Regions/ISO3166-2-SubdivisionCodes-ES/</u>
<u>lcc-3166-2- et</u>	<u>Ethiopia</u>	<u>http://www.omg.org/spec/LCC/Countries/Regions/ISO3166-2-SubdivisionCodes-ET/</u>
<u>lcc-3166-2- fi</u>	<u>Finland</u>	<u>http://www.omg.org/spec/LCC/Countries/Regions/ISO3166-2-SubdivisionCodes-FI/</u>
<u>lcc-3166-2- fj</u>	<u>Fiji</u>	<u>http://www.omg.org/spec/LCC/Countries/Regions/ISO3166-2-SubdivisionCodes-FJ/</u>
<u>lcc-3166-2- fm</u>	<u>Micronesia</u>	<u>http://www.omg.org/spec/LCC/Countries/Regions/ISO3166-2-SubdivisionCodes-FM/</u>
<u>lcc-3166-2- fr</u>	<u>France</u>	<u>http://www.omg.org/spec/LCC/Countries/Regions/ISO3166-2-SubdivisionCodes-FR/</u>
<u>lcc-3166-2- ga</u>	<u>Gabon</u>	<u>http://www.omg.org/spec/LCC/Countries/Regions/ISO3166-2-SubdivisionCodes-GA/</u>
<u>lcc-3166-2- gb</u>	<u>United Kingdom of Great Britain and Northern Ireland</u>	<u>http://www.omg.org/spec/LCC/Countries/Regions/ISO3166-2-SubdivisionCodes-GB/</u>
<u>lcc-3166-2- gd</u>	<u>Grenada</u>	<u>http://www.omg.org/spec/LCC/Countries/Regions/ISO3166-2-SubdivisionCodes-GD/</u>
<u>lcc-3166-2- ge</u>	<u>Georgia</u>	<u>http://www.omg.org/spec/LCC/Countries/Regions/ISO3166-2-SubdivisionCodes-GE/</u>
<u>lcc-3166-2- gg</u>	<u>Guernsey</u>	<u>http://www.omg.org/spec/LCC/Countries/Regions/ISO3166-2-SubdivisionCodes-GG/</u>
<u>lcc-3166-2- gh</u>	<u>Ghana</u>	<u>http://www.omg.org/spec/LCC/Countries/Regions/ISO3166-2-SubdivisionCodes-GH/</u>

<u>gh</u>		<u>SubdivisionCodes-GH/</u>
<u>lcc-3166-2-gl</u>	<u>Greenland</u>	<u>http://www.omg.org/spec/LCC/Countries/Regions/ISO3166-2-SubdivisionCodes-GL/</u>
<u>lcc-3166-2-gm</u>	<u>Gambia</u>	<u>http://www.omg.org/spec/LCC/Countries/Regions/ISO3166-2-SubdivisionCodes-GM/</u>
<u>lcc-3166-2-gn</u>	<u>Guinea</u>	<u>http://www.omg.org/spec/LCC/Countries/Regions/ISO3166-2-SubdivisionCodes-GN/</u>
<u>lcc-3166-2-gp</u>	<u>Guadeloupe</u>	<u>http://www.omg.org/spec/LCC/Countries/Regions/ISO3166-2-SubdivisionCodes-GP/</u>
<u>lcc-3166-2-gq</u>	<u>Equatorial Guinea</u>	<u>http://www.omg.org/spec/LCC/Countries/Regions/ISO3166-2-SubdivisionCodes-GQ/</u>
<u>lcc-3166-2-gr</u>	<u>Greece</u>	<u>http://www.omg.org/spec/LCC/Countries/Regions/ISO3166-2-SubdivisionCodes-GR/</u>
<u>lcc-3166-2-gs</u>	<u>South Georgia and the South Sandwich Islands</u>	<u>http://www.omg.org/spec/LCC/Countries/Regions/ISO3166-2-SubdivisionCodes-GS/</u>
<u>lcc-3166-2-gt</u>	<u>Guatemala</u>	<u>http://www.omg.org/spec/LCC/Countries/Regions/ISO3166-2-SubdivisionCodes-GT/</u>
<u>lcc-3166-2-gw</u>	<u>Guinea-Bissau</u>	<u>http://www.omg.org/spec/LCC/Countries/Regions/ISO3166-2-SubdivisionCodes-GW/</u>
<u>lcc-3166-2-gy</u>	<u>Guyana</u>	<u>http://www.omg.org/spec/LCC/Countries/Regions/ISO3166-2-SubdivisionCodes-GY/</u>
<u>lcc-3166-2-hm</u>	<u>Heard Island and McDonald Islands</u>	<u>http://www.omg.org/spec/LCC/Countries/Regions/ISO3166-2-SubdivisionCodes-HM/</u>
<u>lcc-3166-2-hn</u>	<u>Honduras</u>	<u>http://www.omg.org/spec/LCC/Countries/Regions/ISO3166-2-SubdivisionCodes-HN/</u>
<u>lcc-3166-2-hr</u>	<u>Croatia</u>	<u>http://www.omg.org/spec/LCC/Countries/Regions/ISO3166-2-SubdivisionCodes-HR/</u>
<u>lcc-3166-2-ht</u>	<u>Haiti</u>	<u>http://www.omg.org/spec/LCC/Countries/Regions/ISO3166-2-SubdivisionCodes-HT/</u>
<u>lcc-3166-2-hu</u>	<u>Hungary</u>	<u>http://www.omg.org/spec/LCC/Countries/Regions/ISO3166-2-SubdivisionCodes-HU/</u>
<u>lcc-3166-2-id</u>	<u>Indonesia</u>	<u>http://www.omg.org/spec/LCC/Countries/Regions/ISO3166-2-SubdivisionCodes-ID/</u>
<u>lcc-3166-2-ie</u>	<u>Ireland</u>	<u>http://www.omg.org/spec/LCC/Countries/Regions/ISO3166-2-SubdivisionCodes-IE/</u>
<u>lcc-3166-2-il</u>	<u>Israel</u>	<u>http://www.omg.org/spec/LCC/Countries/Regions/ISO3166-2-SubdivisionCodes-IL/</u>
<u>lcc-3166-2-in</u>	<u>India</u>	<u>http://www.omg.org/spec/LCC/Countries/Regions/ISO3166-2-SubdivisionCodes-IN/</u>
<u>lcc-3166-2-io</u>	<u>British Indian Ocean Territory</u>	<u>http://www.omg.org/spec/LCC/Countries/Regions/ISO3166-2-SubdivisionCodes-IO/</u>
<u>lcc-3166-2-ig</u>	<u>Iraq</u>	<u>http://www.omg.org/spec/LCC/Countries/Regions/ISO3166-2-SubdivisionCodes-IO/</u>
<u>lcc-3166-2-ir</u>	<u>Iran</u>	<u>http://www.omg.org/spec/LCC/Countries/Regions/ISO3166-2-SubdivisionCodes-IR/</u>
<u>lcc-3166-2-is</u>	<u>Iceland</u>	<u>http://www.omg.org/spec/LCC/Countries/Regions/ISO3166-2-SubdivisionCodes-IS/</u>
<u>lcc-3166-2-it</u>	<u>Italy</u>	<u>http://www.omg.org/spec/LCC/Countries/Regions/ISO3166-2-SubdivisionCodes-IT/</u>

<u>lcc-3166-2-jm</u>	<u>Jamaica</u>	<u>http://www.omg.org/spec/LCC/Countries/Regions/ISO3166-2-SubdivisionCodes-JM/</u>
<u>lcc-3166-2-jo</u>	<u>Jordan</u>	<u>http://www.omg.org/spec/LCC/Countries/Regions/ISO3166-2-SubdivisionCodes-JO/</u>
<u>lcc-3166-2-jp</u>	<u>Japan</u>	<u>http://www.omg.org/spec/LCC/Countries/Regions/ISO3166-2-SubdivisionCodes-JP/</u>
<u>lcc-3166-2-ke</u>	<u>Kenya</u>	<u>http://www.omg.org/spec/LCC/Countries/Regions/ISO3166-2-SubdivisionCodes-KE/</u>
<u>lcc-3166-2-kg</u>	<u>Kyrgyzstan</u>	<u>http://www.omg.org/spec/LCC/Countries/Regions/ISO3166-2-SubdivisionCodes-KG/</u>
<u>lcc-3166-2-kh</u>	<u>Cambodia</u>	<u>http://www.omg.org/spec/LCC/Countries/Regions/ISO3166-2-SubdivisionCodes-KH/</u>
<u>lcc-3166-2-ki</u>	<u>Kiribati</u>	<u>http://www.omg.org/spec/LCC/Countries/Regions/ISO3166-2-SubdivisionCodes-KI/</u>
<u>lcc-3166-2-km</u>	<u>Comoros</u>	<u>http://www.omg.org/spec/LCC/Countries/Regions/ISO3166-2-SubdivisionCodes-KM/</u>
<u>lcc-3166-2-kn</u>	<u>Saint Kitts and Nevis</u>	<u>http://www.omg.org/spec/LCC/Countries/Regions/ISO3166-2-SubdivisionCodes-KN/</u>
<u>lcc-3166-2-kp</u>	<u>Korea, Democratic Peoples Republic Of</u>	<u>http://www.omg.org/spec/LCC/Countries/Regions/ISO3166-2-SubdivisionCodes-KP/</u>
<u>lcc-3166-2-kr</u>	<u>Korea, Republic Of</u>	<u>http://www.omg.org/spec/LCC/Countries/Regions/ISO3166-2-SubdivisionCodes-KR/</u>
<u>lcc-3166-2-kw</u>	<u>Kuwait</u>	<u>http://www.omg.org/spec/LCC/Countries/Regions/ISO3166-2-SubdivisionCodes-KW/</u>
<u>lcc-3166-2-ky</u>	<u>Cayman Islands</u>	<u>http://www.omg.org/spec/LCC/Countries/Regions/ISO3166-2-SubdivisionCodes-KY/</u>
<u>lcc-3166-2-kz</u>	<u>Kazakhstan</u>	<u>http://www.omg.org/spec/LCC/Countries/Regions/ISO3166-2-SubdivisionCodes-KZ/</u>
<u>lcc-3166-2-la</u>	<u>Lao People's Democratic Republic</u>	<u>http://www.omg.org/spec/LCC/Countries/Regions/ISO3166-2-SubdivisionCodes-LA/</u>
<u>lcc-3166-2-lb</u>	<u>Lebanon</u>	<u>http://www.omg.org/spec/LCC/Countries/Regions/ISO3166-2-SubdivisionCodes-LB/</u>
<u>lcc-3166-2-lc</u>	<u>Saint Lucia</u>	<u>http://www.omg.org/spec/LCC/Countries/Regions/ISO3166-2-SubdivisionCodes-LC/</u>
<u>lcc-3166-2-li</u>	<u>Liechtenstein</u>	<u>http://www.omg.org/spec/LCC/Countries/Regions/ISO3166-2-SubdivisionCodes-LI/</u>
<u>lcc-3166-2-lk</u>	<u>Sri Lanka</u>	<u>http://www.omg.org/spec/LCC/Countries/Regions/ISO3166-2-SubdivisionCodes-LK/</u>
<u>lcc-3166-2-lr</u>	<u>Liberia</u>	<u>http://www.omg.org/spec/LCC/Countries/Regions/ISO3166-2-SubdivisionCodes-LR/</u>
<u>lcc-3166-2-ls</u>	<u>Lesotho</u>	<u>http://www.omg.org/spec/LCC/Countries/Regions/ISO3166-2-SubdivisionCodes-LS/</u>
<u>lcc-3166-2-lt</u>	<u>Lithuania</u>	<u>http://www.omg.org/spec/LCC/Countries/Regions/ISO3166-2-SubdivisionCodes-LT/</u>
<u>lcc-3166-2-lu</u>	<u>Luxembourg</u>	<u>http://www.omg.org/spec/LCC/Countries/Regions/ISO3166-2-SubdivisionCodes-LU/</u>
<u>lcc-3166-2-lv</u>	<u>Latvia</u>	<u>http://www.omg.org/spec/LCC/Countries/Regions/ISO3166-2-SubdivisionCodes-LV/</u>

<u>lcc-3166-2-ly</u>	<u>Libya</u>	<u>http://www.omg.org/spec/LCC/Countries/Regions/ISO3166-2-SubdivisionCodes-LY/</u>
<u>lcc-3166-2-ma</u>	<u>Morocco</u>	<u>http://www.omg.org/spec/LCC/Countries/Regions/ISO3166-2-SubdivisionCodes-MA/</u>
<u>lcc-3166-2-mc</u>	<u>Monaco</u>	<u>http://www.omg.org/spec/LCC/Countries/Regions/ISO3166-2-SubdivisionCodes-MC/</u>
<u>lcc-3166-2-md</u>	<u>Moldova</u>	<u>http://www.omg.org/spec/LCC/Countries/Regions/ISO3166-2-SubdivisionCodes-MD/</u>
<u>lcc-3166-2-me</u>	<u>Montenegro</u>	<u>http://www.omg.org/spec/LCC/Countries/Regions/ISO3166-2-SubdivisionCodes-ME/</u>
<u>lcc-3166-2-mf</u>	<u>Saint Martin</u>	<u>http://www.omg.org/spec/LCC/Countries/Regions/ISO3166-2-SubdivisionCodes-MF/</u>
<u>lcc-3166-2-mg</u>	<u>Madagascar</u>	<u>http://www.omg.org/spec/LCC/Countries/Regions/ISO3166-2-SubdivisionCodes-MG/</u>
<u>lcc-3166-2-mh</u>	<u>Marshall Islands</u>	<u>http://www.omg.org/spec/LCC/Countries/Regions/ISO3166-2-SubdivisionCodes-MH/</u>
<u>lcc-3166-2-mk</u>	<u>Macedonia</u>	<u>http://www.omg.org/spec/LCC/Countries/Regions/ISO3166-2-SubdivisionCodes-MK/</u>
<u>lcc-3166-2-ml</u>	<u>Mali</u>	<u>http://www.omg.org/spec/LCC/Countries/Regions/ISO3166-2-SubdivisionCodes-ML/</u>
<u>lcc-3166-2-mm</u>	<u>Myanmar</u>	<u>http://www.omg.org/spec/LCC/Countries/Regions/ISO3166-2-SubdivisionCodes-MM/</u>
<u>lcc-3166-2-mn</u>	<u>Mongolia</u>	<u>http://www.omg.org/spec/LCC/Countries/Regions/ISO3166-2-SubdivisionCodes-MN/</u>
<u>lcc-3166-2-mp</u>	<u>Northern Mariana Islands</u>	<u>http://www.omg.org/spec/LCC/Countries/Regions/ISO3166-2-SubdivisionCodes-MP/</u>
<u>lcc-3166-2-mr</u>	<u>Mauritania</u>	<u>http://www.omg.org/spec/LCC/Countries/Regions/ISO3166-2-SubdivisionCodes-MR/</u>
<u>lcc-3166-2-mt</u>	<u>Malta</u>	<u>http://www.omg.org/spec/LCC/Countries/Regions/ISO3166-2-SubdivisionCodes-MT/</u>
<u>lcc-3166-2-mu</u>	<u>Mauritius</u>	<u>http://www.omg.org/spec/LCC/Countries/Regions/ISO3166-2-SubdivisionCodes-MU/</u>
<u>lcc-3166-2-mv</u>	<u>Maldives</u>	<u>http://www.omg.org/spec/LCC/Countries/Regions/ISO3166-2-SubdivisionCodes-MV/</u>
<u>lcc-3166-2-mw</u>	<u>Malawi</u>	<u>http://www.omg.org/spec/LCC/Countries/Regions/ISO3166-2-SubdivisionCodes-MW/</u>
<u>lcc-3166-2-mx</u>	<u>Mexico</u>	<u>http://www.omg.org/spec/LCC/Countries/Regions/ISO3166-2-SubdivisionCodes-MX/</u>
<u>lcc-3166-2-my</u>	<u>Malaysia</u>	<u>http://www.omg.org/spec/LCC/Countries/Regions/ISO3166-2-SubdivisionCodes-MY/</u>
<u>lcc-3166-2-mz</u>	<u>Mozambique</u>	<u>http://www.omg.org/spec/LCC/Countries/Regions/ISO3166-2-SubdivisionCodes-MZ/</u>
<u>lcc-3166-2-na</u>	<u>Namibia</u>	<u>http://www.omg.org/spec/LCC/Countries/Regions/ISO3166-2-SubdivisionCodes-NA/</u>
<u>lcc-3166-2-nc</u>	<u>New Caledonia</u>	<u>http://www.omg.org/spec/LCC/Countries/Regions/ISO3166-2-SubdivisionCodes-NC/</u>
<u>lcc-3166-2-ne</u>	<u>Niger</u>	<u>http://www.omg.org/spec/LCC/Countries/Regions/ISO3166-2-SubdivisionCodes-NE/</u>

<u>lcc-3166-2-ng</u>	<u>Nigeria</u>	<u>http://www.omg.org/spec/LCC/Countries/Regions/ISO3166-2-SubdivisionCodes-NG/</u>
<u>lcc-3166-2-ni</u>	<u>Nicaragua</u>	<u>http://www.omg.org/spec/LCC/Countries/Regions/ISO3166-2-SubdivisionCodes-NI/</u>
<u>lcc-3166-2-nl</u>	<u>Netherlands</u>	<u>http://www.omg.org/spec/LCC/Countries/Regions/ISO3166-2-SubdivisionCodes-NL/</u>
<u>lcc-3166-2-no</u>	<u>Norway</u>	<u>http://www.omg.org/spec/LCC/Countries/Regions/ISO3166-2-SubdivisionCodes-NO/</u>
<u>lcc-3166-2-np</u>	<u>Nepal</u>	<u>http://www.omg.org/spec/LCC/Countries/Regions/ISO3166-2-SubdivisionCodes-NP/</u>
<u>lcc-3166-2-nr</u>	<u>Nauru</u>	<u>http://www.omg.org/spec/LCC/Countries/Regions/ISO3166-2-SubdivisionCodes-NR/</u>
<u>lcc-3166-2-nz</u>	<u>New Zealand</u>	<u>http://www.omg.org/spec/LCC/Countries/Regions/ISO3166-2-SubdivisionCodes-NZ/</u>
<u>lcc-3166-2-om</u>	<u>Oman</u>	<u>http://www.omg.org/spec/LCC/Countries/Regions/ISO3166-2-SubdivisionCodes-OM/</u>
<u>lcc-3166-2-pa</u>	<u>Panama</u>	<u>http://www.omg.org/spec/LCC/Countries/Regions/ISO3166-2-SubdivisionCodes-PA/</u>
<u>lcc-3166-2-pe</u>	<u>Peru</u>	<u>http://www.omg.org/spec/LCC/Countries/Regions/ISO3166-2-SubdivisionCodes-PE/</u>
<u>lcc-3166-2-pf</u>	<u>French Polynesia</u>	<u>http://www.omg.org/spec/LCC/Countries/Regions/ISO3166-2-SubdivisionCodes-PF/</u>
<u>lcc-3166-2-pg</u>	<u>Papua New Guinea</u>	<u>http://www.omg.org/spec/LCC/Countries/Regions/ISO3166-2-SubdivisionCodes-PG/</u>
<u>lcc-3166-2-ph</u>	<u>Philippines</u>	<u>http://www.omg.org/spec/LCC/Countries/Regions/ISO3166-2-SubdivisionCodes-PH/</u>
<u>lcc-3166-2-pk</u>	<u>Pakistan</u>	<u>http://www.omg.org/spec/LCC/Countries/Regions/ISO3166-2-SubdivisionCodes-PK/</u>
<u>lcc-3166-2-pl</u>	<u>Poland</u>	<u>http://www.omg.org/spec/LCC/Countries/Regions/ISO3166-2-SubdivisionCodes-PL/</u>
<u>lcc-3166-2-pm</u>	<u>Saint Pierre and Miquelon</u>	<u>http://www.omg.org/spec/LCC/Countries/Regions/ISO3166-2-SubdivisionCodes-PM/</u>
<u>lcc-3166-2-pn</u>	<u>Pitcairn</u>	<u>http://www.omg.org/spec/LCC/Countries/Regions/ISO3166-2-SubdivisionCodes-PN/</u>
<u>lcc-3166-2-ps</u>	<u>Palestine</u>	<u>http://www.omg.org/spec/LCC/Countries/Regions/ISO3166-2-SubdivisionCodes-PS/</u>
<u>lcc-3166-2-pt</u>	<u>Portugal</u>	<u>http://www.omg.org/spec/LCC/Countries/Regions/ISO3166-2-SubdivisionCodes-PT/</u>
<u>lcc-3166-2-pw</u>	<u>Palau</u>	<u>http://www.omg.org/spec/LCC/Countries/Regions/ISO3166-2-SubdivisionCodes-PW/</u>
<u>lcc-3166-2-py</u>	<u>Paraguay</u>	<u>http://www.omg.org/spec/LCC/Countries/Regions/ISO3166-2-SubdivisionCodes-PY/</u>
<u>lcc-3166-2-qa</u>	<u>Qatar</u>	<u>http://www.omg.org/spec/LCC/Countries/Regions/ISO3166-2-SubdivisionCodes-QA/</u>
<u>lcc-3166-2-ro</u>	<u>Romania</u>	<u>http://www.omg.org/spec/LCC/Countries/Regions/ISO3166-2-SubdivisionCodes-RO/</u>
<u>lcc-3166-2-rs</u>	<u>Serbia</u>	<u>http://www.omg.org/spec/LCC/Countries/Regions/ISO3166-2-SubdivisionCodes-RS/</u>

<u>lcc-3166-2-ru</u>	<u>Russian Federation</u>	<u>http://www.omg.org/spec/LCC/Countries/Regions/ISO3166-2-SubdivisionCodes-RU/</u>
<u>lcc-3166-2-rw</u>	<u>Rwanda</u>	<u>http://www.omg.org/spec/LCC/Countries/Regions/ISO3166-2-SubdivisionCodes-RW/</u>
<u>lcc-3166-2-sa</u>	<u>Saudi Arabia</u>	<u>http://www.omg.org/spec/LCC/Countries/Regions/ISO3166-2-SubdivisionCodes-SA/</u>
<u>lcc-3166-2-sb</u>	<u>Solomon Islands</u>	<u>http://www.omg.org/spec/LCC/Countries/Regions/ISO3166-2-SubdivisionCodes-SB/</u>
<u>lcc-3166-2-sc</u>	<u>Seychelles</u>	<u>http://www.omg.org/spec/LCC/Countries/Regions/ISO3166-2-SubdivisionCodes-SC/</u>
<u>lcc-3166-2-sd</u>	<u>Sudan</u>	<u>http://www.omg.org/spec/LCC/Countries/Regions/ISO3166-2-SubdivisionCodes-SD/</u>
<u>lcc-3166-2-se</u>	<u>Sweden</u>	<u>http://www.omg.org/spec/LCC/Countries/Regions/ISO3166-2-SubdivisionCodes-SE/</u>
<u>lcc-3166-2-sg</u>	<u>Singapore</u>	<u>http://www.omg.org/spec/LCC/Countries/Regions/ISO3166-2-SubdivisionCodes-SG/</u>
<u>lcc-3166-2-sh</u>	<u>Saint Helena, Ascension and Tristan da Cunha</u>	<u>http://www.omg.org/spec/LCC/Countries/Regions/ISO3166-2-SubdivisionCodes-SH/</u>
<u>lcc-3166-2-si</u>	<u>Slovenia</u>	<u>http://www.omg.org/spec/LCC/Countries/Regions/ISO3166-2-SubdivisionCodes-SI/</u>
<u>lcc-3166-2-sj</u>	<u>Svalbard and Jan Mayen</u>	<u>http://www.omg.org/spec/LCC/Countries/Regions/ISO3166-2-SubdivisionCodes-SJ/</u>
<u>lcc-3166-2-sk</u>	<u>Slovakia</u>	<u>http://www.omg.org/spec/LCC/Countries/Regions/ISO3166-2-SubdivisionCodes-SK/</u>
<u>lcc-3166-2-sl</u>	<u>Sierra Leone</u>	<u>http://www.omg.org/spec/LCC/Countries/Regions/ISO3166-2-SubdivisionCodes-SL/</u>
<u>lcc-3166-2-sm</u>	<u>San Marino</u>	<u>http://www.omg.org/spec/LCC/Countries/Regions/ISO3166-2-SubdivisionCodes-SM/</u>
<u>lcc-3166-2-sn</u>	<u>Senegal</u>	<u>http://www.omg.org/spec/LCC/Countries/Regions/ISO3166-2-SubdivisionCodes-SN/</u>
<u>lcc-3166-2-so</u>	<u>Somalia</u>	<u>http://www.omg.org/spec/LCC/Countries/Regions/ISO3166-2-SubdivisionCodes-SO/</u>
<u>lcc-3166-2-sr</u>	<u>Suriname</u>	<u>http://www.omg.org/spec/LCC/Countries/Regions/ISO3166-2-SubdivisionCodes-SR/</u>
<u>lcc-3166-2-ss</u>	<u>South Sudan</u>	<u>http://www.omg.org/spec/LCC/Countries/Regions/ISO3166-2-SubdivisionCodes-SS/</u>
<u>lcc-3166-2-st</u>	<u>Sao Tome and Principe</u>	<u>http://www.omg.org/spec/LCC/Countries/Regions/ISO3166-2-SubdivisionCodes-ST/</u>
<u>lcc-3166-2-sv</u>	<u>El Salvador</u>	<u>http://www.omg.org/spec/LCC/Countries/Regions/ISO3166-2-SubdivisionCodes-SV/</u>
<u>lcc-3166-2-sy</u>	<u>Syrian Arab Republic</u>	<u>http://www.omg.org/spec/LCC/Countries/Regions/ISO3166-2-SubdivisionCodes-SY/</u>
<u>lcc-3166-2-sz</u>	<u>Swaziland</u>	<u>http://www.omg.org/spec/LCC/Countries/Regions/ISO3166-2-SubdivisionCodes-SZ/</u>
<u>lcc-3166-2-tc</u>	<u>Turks and Caicos Islands</u>	<u>http://www.omg.org/spec/LCC/Countries/Regions/ISO3166-2-SubdivisionCodes-TC/</u>
<u>lcc-3166-2-td</u>	<u>Chad</u>	<u>http://www.omg.org/spec/LCC/Countries/Regions/ISO3166-2-SubdivisionCodes-TD/</u>

lcc-3166-2-tf	French Southern Territories	http://www.omg.org/spec/LCC/Countries/Regions/ISO3166-2-SubdivisionCodes-TF/
lcc-3166-2-tg	Togo	http://www.omg.org/spec/LCC/Countries/Regions/ISO3166-2-SubdivisionCodes-TG/
lcc-3166-2-th	Thailand	http://www.omg.org/spec/LCC/Countries/Regions/ISO3166-2-SubdivisionCodes-TH/
lcc-3166-2-tj	Tajikistan	http://www.omg.org/spec/LCC/Countries/Regions/ISO3166-2-SubdivisionCodes-TJ/
lcc-3166-2-tl	Timor-Leste	http://www.omg.org/spec/LCC/Countries/Regions/ISO3166-2-SubdivisionCodes-TL/
lcc-3166-2-tm	Turkmenistan	http://www.omg.org/spec/LCC/Countries/Regions/ISO3166-2-SubdivisionCodes-TM/
lcc-3166-2-tn	Tunisia	http://www.omg.org/spec/LCC/Countries/Regions/ISO3166-2-SubdivisionCodes-TN/
lcc-3166-2-to	Tonga	http://www.omg.org/spec/LCC/Countries/Regions/ISO3166-2-SubdivisionCodes-TO/
lcc-3166-2-tr	Turkey	http://www.omg.org/spec/LCC/Countries/Regions/ISO3166-2-SubdivisionCodes-TR/
lcc-3166-2-tt	Trinidad and Tobago	http://www.omg.org/spec/LCC/Countries/Regions/ISO3166-2-SubdivisionCodes-TT/
lcc-3166-2-tv	Tuvalu	http://www.omg.org/spec/LCC/Countries/Regions/ISO3166-2-SubdivisionCodes-TV/
lcc-3166-2-tw	Taiwan	http://www.omg.org/spec/LCC/Countries/Regions/ISO3166-2-SubdivisionCodes-TW/
lcc-3166-2-tz	Tanzania	http://www.omg.org/spec/LCC/Countries/Regions/ISO3166-2-SubdivisionCodes-TZ/
lcc-3166-2-ua	Ukraine	http://www.omg.org/spec/LCC/Countries/Regions/ISO3166-2-SubdivisionCodes-UA/
lcc-3166-2-ug	Uganda	http://www.omg.org/spec/LCC/Countries/Regions/ISO3166-2-SubdivisionCodes-UG/
lcc-3166-2-um	United States Minor Outlying Islands	http://www.omg.org/spec/LCC/Countries/Regions/ISO3166-2-SubdivisionCodes-UM/
lcc-3166-2-us	United States of America	http://www.omg.org/spec/LCC/Countries/Regions/ISO3166-2-SubdivisionCodes-US/
lcc-3166-2-uy	Uruguay	http://www.omg.org/spec/LCC/Countries/Regions/ISO3166-2-SubdivisionCodes-UY/
lcc-3166-2-uz	Uzbekistan	http://www.omg.org/spec/LCC/Countries/Regions/ISO3166-2-SubdivisionCodes-UZ/
lcc-3166-2-vc	Saint Vincent and the Grenadines	http://www.omg.org/spec/LCC/Countries/Regions/ISO3166-2-SubdivisionCodes-VC/
lcc-3166-2-ve	Venezuela	http://www.omg.org/spec/LCC/Countries/Regions/ISO3166-2-SubdivisionCodes-VE/
lcc-3166-2-vg	Virgin Islands, British	http://www.omg.org/spec/LCC/Countries/Regions/ISO3166-2-SubdivisionCodes-VG/
lcc-3166-2-vi	Virgin Islands, US	http://www.omg.org/spec/LCC/Countries/Regions/ISO3166-2-SubdivisionCodes-VI/
lcc-3166-2-vn	Viet Nam	http://www.omg.org/spec/LCC/Countries/Regions/ISO3166-2-SubdivisionCodes-VN/

lcc-3166-2-vu	Vanuatu	http://www.omg.org/spec/LCC/Countries/Regions/ISO3166-2-SubdivisionCodes-VU/
lcc-3166-2-wf	Wallis and Futuna	http://www.omg.org/spec/LCC/Countries/Regions/ISO3166-2-SubdivisionCodes-WF/
lcc-3166-2-ws	Samoa	http://www.omg.org/spec/LCC/Countries/Regions/ISO3166-2-SubdivisionCodes-WS/
lcc-3166-2-ye	Yemen	http://www.omg.org/spec/LCC/Countries/Regions/ISO3166-2-SubdivisionCodes-YE/
lcc-3166-2-za	South Africa	http://www.omg.org/spec/LCC/Countries/Regions/ISO3166-2-SubdivisionCodes-ZA/
lcc-3166-2-zm	Zambia	http://www.omg.org/spec/LCC/Countries/Regions/ISO3166-2-SubdivisionCodes-ZM/
lcc-3166-2-zw	Zimbabwe	http://www.omg.org/spec/LCC/Countries/Regions/ISO3166-2-SubdivisionCodes-ZW/

The following list is of the OWL files corresponding to the namespaces listed in Table B-1, above, which are in RDF/XML format. For each of the files listed, there are also the following two additional files with the “.rdf” in the filename replaced by:

- [.xmi](#) – the same content in XMI format according to the ODM metamodel
- [.xml](#) – the same content in XML format according to the UML Profile for ODM

Each of these files (including the .xml and .xmi files described above) is published to the OMG server in the following two directories:

- <http://www.omg.org/spec/LCC/Countries/Regions/> represents the latest version
- <http://www.omg.org/spec/LCC/20170801/Countries/Regions/> represents a stable, version-specific IRI for this version 1.0 of the LCC Specification.

ISO3166-2-SubdivisionCodes-US.rdf	ISO3166-2-SubdivisionCodes-VG.rdf	ISO3166-2-SubdivisionCodes-WS.rdf
ISO3166-2-SubdivisionCodes-UY.rdf	ISO3166-2-SubdivisionCodes-VI.rdf	ISO3166-2-SubdivisionCodes-YE.rdf
ISO3166-2-SubdivisionCodes-UZ.rdf	ISO3166-2-SubdivisionCodes-VN.rdf	ISO3166-2-SubdivisionCodes-ZA.rdf
ISO3166-2-SubdivisionCodes-VC.rdf	ISO3166-2-SubdivisionCodes-VU.rdf	ISO3166-2-SubdivisionCodes-ZM.rdf
ISO3166-2-SubdivisionCodes-VE.rdf	ISO3166-2-SubdivisionCodes-WF.rdf	ISO3166-2-SubdivisionCodes-ZW.rdf

[Issue LCC-7 – insert Annex C](#)

This page intentionally left blank.

Annex C: Generating Ontologies from External Code Definitions

(informative)

This Annex describes how the OWL (RDF/XML) files in this specification are generated from the published ISO and UN Sources. This enables the automated generation of updated ontologies when ISO/UN publish their updates.

C.1 ISO 3166

The source is the XML file published by ISO (and available via subscription) as iso_country_codes.xml. This XML file is processed by two separate XSL files (details below) to produce the OWL files. There are common algorithms used by each of these files, as follows:

C.1.1 Camel Case

This turns a published country, subdivision or territory name into a camel case name used for the URI of the ontology element (a NamedIndividual). The steps are as follows:

- Split the name into tokens using the space character
- Convert initial character of each token to uppercase
- Normalize Unicode characters using the NFD algorithm and omit any characters outside the Basic Latin character set
- Remove apostrophes and periods
- Truncate the string at the first character that is not alphanumeric or hyphen

C.1.2 Country Name Overrides

In general, the URIs for countries use the above Camel Case algorithm applied to the published short name of the country (the English short name if there are many).

To ensure uniqueness of URIs, following countries are overridden before applying the above algorithm. Table C-1 shows the ISO 3166-1 two-character code and the name used.

Table C-1 ISO 3166-1 Overrides

<u>ISO 3166-1 Alpha 2 Code</u>	<u>Country Name</u>
<u>CC</u>	<u>Cocos Keeling Islands</u>
<u>CD</u>	<u>Congo Democratic Republic Of</u>
<u>KP</u>	<u>Korea Democratic Peoples Republic Of</u>
<u>KR</u>	<u>Korea Republic Of</u>
<u>VG</u>	<u>Virgin Islands British</u>
<u>VI</u>	<u>Virgin Islands US</u>

C.1.3 Country Codes Processing

The file ISO-3166-1-CountryCodes.rdf is produced using the XSL file ISO-3166-Countries.xsl.

The outline of processing as follows:

- Generate the Ontology element
 1. Include boiler plate information using OMG's Specification metadata ontology.
 2. Insert the timestamp from the ISO XML file as the Dublin Core issued date of the ontology.
 3. Generate a versionIRI using a hard-coded OMG-format timestamp (needs to be updated each version)
- Generate Individuals for the two CodeSets (2 and 3-character alpha codes)
- Generate sameAs statements to allow use of URIs in the adopted version of the LCC Standard: United States, UnitedKingdom and CzechRepublic
- Generate Individuals for 3 Languages which are referenced by Country elements in ISO-3166 but not yet included in the ISO 639-2 Languages standard. They have language codes of 001, 002 and crs. The latter is included in ISO 639-3, but the 639-3 codes are not provided as a part of the LCC language ontologies in the LCC 1.0 Specification due to questions with respect to intellectual property rights defined on the registration authority (SIL) web site.
- Process each Country as follows:
 1. Generate URI using Country Name Overrides and Camel Case algorithms in previous section
 2. Process labels for country using specific ontology properties for English and French names (short, long, upper case) with other labels represented using hasLocalName
 3. Process each language marked as Administrative. Look up the 3-character language code from the ISO file in the LCC languages ontology file in order to find the correct LCC URI to link to.
 4. Include any Remarks in English as values of the hasRemarks property.
 5. Process the 2- and 3-character codes as separate NamedIndividuals of type Alpha2Code and Alpha3Code respectively.

C.1.4 Subdivision Codes Processing

The XSL file ISO-3166-Subdivisions.xsl produces many ontology files in the subdirectory Regions, each with the name ISO3166-2-SubdivisionCodes-XX.rdf where XX is the 2-character code for the country. A file is only produced if the country has reported subdivisions or territories.

A further output is the list of such files which is incorporated into the About file by adding boilerplate.

The outline of processing is as follows:

- For each country that has a subdivision or territory
 1. Create a file in the Regions subdirectory
 2. Generate the Ontology element
 - a) Include boiler plate information using OMG's Specification metadata ontology.
 - b) Insert the timestamp from the ISO XML file as the Dublin Core issued date of the ontology.

c) Generate a versionIRI using a hard-coded OMG-format timestamp (needs to be updated each version)

d) For each category (e.g., “county”, “district”) for the country in the ISO XML file:

- Generate an Individual of class GeographicRegionKind. The URI is the English name of the category converted to Camel Case and appended to the URI of the country-specific ontology.

e) For each subdivision in the ISO XML file

- Generate an individual of class CountrySubdivision. The URI is the English name of the subdivision converted to Camel Case and appended to the URI of the country-specific ontology. The overrides provided in Table C-2, below, are required to ensure uniqueness, where a country has subdivisions with the same name at different levels.

Table C-2 ISO 3166-2 Country Subdivision / Code Overrides

ISO 3166-2 Code Country Subdivision Name	
<u>AZ-SA</u>	<u>Ski-Municipality</u>
<u>AZ-YE</u>	<u>Yevlax-Municipality</u>
<u>AZ-LA</u>	<u>Inkran-Municipality</u>
<u>BG-22</u>	<u>SofiaStolitza</u>
<u>HU-VM</u>	<u>Veszprem-City</u>
<u>LA-VT</u>	<u>Viangchan-Prefecture</u>
<u>MU-PU</u>	<u>PortLouis-City</u>
<u>MZ-MPM</u>	<u>Maputo-City</u>
<u>TW-HSZ</u>	<u>Hsinchu-City</u>
<u>TW-CYI</u>	<u>Chiayi-City</u>
<u>UZ-TK</u>	<u>Toshkent-City</u>

- Link to the category via isClassifiedBy property

- Link to the country and any parent subdivision

- If the ISO file has property subdivision-related-country then create a sameAs link to the element in the ISO-3166-1 ontology

- Process the subdivision code as an Individual of class GeographicRegionIdentifier

- Recursively process any subdivisions of the subdivision

f) For each territory in the ISO XML file

- Generate an individual of class Territory

- Link to the category “Territory” via isClassifiedBy property

- Link to the country

C.2 UN M49 Region Codes

The UN M49 information is used to create regions at different levels. The processing is as follows, and makes use of two tools prior to applying XSL.

- [TARQL](https://github.com/tarql/tarql/releases), to convert from CSV to RDF (Turtle). Available at <https://github.com/tarql/tarql/releases>. Note that release 1.2 or later is required.
- [Rapper](http://download.librdf.org/source/) (part of Raptor), to convert from turtle to RDF/XML. Available from <http://download.librdf.org/source/>. Version used was 2.0.15.

The steps are:

- [Download the English CSV file as M49.csv from the UN site](https://unstats.un.org/unsd/methodology/m49/overview/)
<https://unstats.un.org/unsd/methodology/m49/overview/>
- [Edit the column headers in Row 1 to remove all spaces and hyphens](#)
- [Run TARQL on the CSV file using the SPARQL file M49.sparql included in this specification. The command line is as follows:](#)

```
tarql -dedup 1000 M49.sparql M49.csv >m49.rdf
```
- [Run rapper to convert to RDF/XML. The command line is as follows.](#)

```
rapper -I turtle -o rdfxml-abbrev m49.rdf >m49.xml
```
- [Apply M49-Format.xsl to the output to clean up the ontology and add boiler plate.](#)

Overall the conversion is as follows. In general, each populated column in the CSV file results in an extra level of GeographicRegion Individual; each is linked to its parent using property isSubregionOf.

At the lowest level, that of countries, new individuals are not created, but triples are added linking the counties in the ISO3166-CountryCodes ontology to the M49 ontology. The 3-letter country code from the CSV file is used to look up the correct country URI in the ISO3166-CountryCodes.rdf file.

For each column in the original CSV file the following table states the corresponding ontology element. Columns not mentioned here are ignored. Where a value is repeated only one element is created (*e.g.*, Africa appears in many rows but only one Individual is created). The ontology also includes declarations of Individuals for four GeographicRegionKinds which are used as per Table C-3, below.

Table C-3 ISO 3166-2 Country Subdivision / Code Overrides

Column	Ontology Mapping
Global Name	GeographicRegionKind = Planet
Region Name	GeographicRegionKind = Continent
Subregion Name	GeographicRegionKind = Region
Intermediate Region Name	GeographicRegionKind = Subregion
Country or Area	Used to lookup country in ISO3166-CountryCodes.rdf
M49 Code	NumericRegionCode property

|

This page intentionally left blank.