

Date: September 2017



OBJECT MANAGEMENT GROUP®

# Languages, Countries and Codes (LCC™)

*Version 1.0 – Beta 2*

---

OMG Document Number: ptc/2017-09-04

Standard document URL: <http://www.omg.org/spec/LCC/1.0/>

Normative Machine Consumable File(s):

<http://www.omg.org/spec/LCC/Languages/LanguageRepresentation.rdf>  
<http://www.omg.org/spec/LCC/20170801/Languages/LanguageRepresentation.rdf>  
<http://www.omg.org/spec/LCC/Languages/ISO639-1-LanguageCodes.rdf>  
<http://www.omg.org/spec/LCC/20170801/Languages/ISO639-1-LanguageCodes.rdf>  
<http://www.omg.org/spec/LCC/Languages/ISO639-2-LanguageCodes.rdf>  
<http://www.omg.org/spec/LCC/20170801/Languages/ISO639-2-LanguageCodes.rdf>  
<http://www.omg.org/spec/LCC/Countries/CountryRepresentation.rdf>  
<http://www.omg.org/spec/LCC/20170801/Countries/CountryRepresentation.rdf>  
<http://www.omg.org/spec/LCC/Countries/ISO3166-1-CountryCodes.rdf>  
<http://www.omg.org/spec/LCC/20170801/Countries/ISO3166-1-CountryCodes.rdf>  
<http://www.omg.org/spec/LCC/Countries/ISO3166-2-SubdivisionCodes.rdf>  
<http://www.omg.org/spec/LCC/20170801/Countries/ISO3166-2-SubdivisionCodes.rdf>  
<http://www.omg.org/spec/LCC/Countries/UN-M49-RegionCodes.rdf>  
<http://www.omg.org/spec/LCC/20170801/Countries/UN-M49-RegionCodes.rdf>

<http://www.omg.org/spec/LCC/20170801/Languages/LanguageRepresentation.xml>  
<http://www.omg.org/spec/LCC/20170801/Languages/ISO639-1-LanguageCodes.xml>  
<http://www.omg.org/spec/LCC/20170801/Languages/ISO639-2-LanguageCodes.xml>  
<http://www.omg.org/spec/LCC/20170801/Countries/CountryRepresentation.xml>  
<http://www.omg.org/spec/LCC/20170801/Countries/ISO3166-1-CountryCodes.xml>

<http://www.omg.org/spec/LCC/20170801/Countries/ISO3166-2-SubdivisionCodes.xml>  
<http://www.omg.org/spec/LCC/20170801/Countries/UN-M49-RegionCodes.xml>

<http://www.omg.org/spec/LCC/20170801/Languages/LanguageRepresentation.xml>  
<http://www.omg.org/spec/LCC/20170801/Languages/ISO639-1-LanguageCodes.xml>  
<http://www.omg.org/spec/LCC/20170801/Languages/ISO639-2-LanguageCodes.xml>  
<http://www.omg.org/spec/LCC/20170801/Countries/CountryRepresentation.xml>  
<http://www.omg.org/spec/LCC/20170801/Countries/ISO3166-1-CountryCodes.xml>  
<http://www.omg.org/spec/LCC/20170801/Countries/ISO3166-2-SubdivisionCodes.xml>  
<http://www.omg.org/spec/LCC/20170801/Countries/UN-M49-RegionCodes.xml>

See Annex B for the list of normative ISO 3166-2 region-specific machine-readable files.

---

Copyright © 2015-2017, Adaptive, Inc.  
Copyright © 2015-2017, Thematix Partners LLC  
Copyright © 2015-2017, Unisys  
Copyright © 2015-2017, Object Management Group, Inc.

## USE OF SPECIFICATION – TERMS, CONDITIONS & NOTICES

The material in this document details an Object Management Group specification in accordance with the terms, conditions and notices set forth below. This document does not represent a commitment to implement any portion of this specification in any company's products. The information contained in this document is subject to change without notice.

### LICENSES

The companies listed above have granted to the Object Management Group, Inc. (OMG) a nonexclusive, royalty-free, paid up, worldwide license to copy and distribute this document and to modify this document and distribute copies of the modified version. Each of the copyright holders listed above has agreed that no person shall be deemed to have infringed the copyright in the included material of any such copyright holder by reason of having used the specification set forth herein or having conformed any computer software to the specification.

Subject to all of the terms and conditions below, the owners of the copyright in this specification hereby grant you a fully-paid up, non-exclusive, nontransferable, perpetual, worldwide license (without the right to sublicense), to use this specification to create and distribute software and special purpose specifications that are based upon this specification, and to use, copy, and distribute this specification as provided under the Copyright Act; provided that: (1) both the copyright notice identified above and this permission notice appear on any copies of this specification; (2) the use of the specifications is for informational purposes and will not be copied or posted on any network computer or broadcast in any media and will not be otherwise resold or transferred for commercial purposes; and (3) no modifications are made to this specification. This limited permission automatically terminates without notice if you breach any of these terms or conditions. Upon termination, you will destroy immediately any copies of the specifications in your possession or control.

### PATENTS

The attention of adopters is directed to the possibility that compliance with or adoption of OMG specifications may require use of an invention covered by patent rights. OMG shall not be responsible for identifying patents for which a license may be required by any OMG specification, or for conducting legal inquiries into the legal validity or scope of those patents that are brought to its attention. OMG specifications are prospective and advisory only. Prospective users are responsible for protecting themselves against liability for infringement of patents.

### GENERAL USE RESTRICTIONS

Any unauthorized use of this specification may violate copyright laws, trademark laws, and communications regulations and statutes. This document contains information which is protected by copyright. All Rights Reserved. No part of this work covered by copyright herein may be reproduced or used in any form or by any means--graphic, electronic, or mechanical, including photocopying, recording, taping, or information storage and retrieval systems--without permission of the copyright owner.

### DISCLAIMER OF WARRANTY

WHILE THIS PUBLICATION IS BELIEVED TO BE ACCURATE, IT IS PROVIDED "AS IS" AND MAY CONTAIN ERRORS OR MISPRINTS. THE OBJECT MANAGEMENT GROUP AND THE COMPANIES LISTED ABOVE

MAKE NO WARRANTY OF ANY KIND, EXPRESS OR IMPLIED, WITH REGARD TO THIS PUBLICATION, INCLUDING BUT NOT LIMITED TO ANY WARRANTY OF TITLE OR OWNERSHIP, IMPLIED WARRANTY OF MERCHANTABILITY OR WARRANTY OF FITNESS FOR A PARTICULAR PURPOSE OR USE. IN NO EVENT SHALL THE OBJECT MANAGEMENT GROUP OR ANY OF THE COMPANIES LISTED ABOVE BE LIABLE FOR ERRORS CONTAINED HEREIN OR FOR DIRECT, INDIRECT, INCIDENTAL, SPECIAL, CONSEQUENTIAL, RELIANCE OR COVER DAMAGES, INCLUDING LOSS OF PROFITS, REVENUE, DATA OR USE, INCURRED BY ANY USER OR ANY THIRD PARTY IN CONNECTION WITH THE FURNISHING, PERFORMANCE, OR USE OF THIS MATERIAL, EVEN IF ADVISED OF THE POSSIBILITY OF SUCH DAMAGES.

The entire risk as to the quality and performance of software developed using this specification is borne by you. This disclaimer of warranty constitutes an essential part of the license granted to you to use this specification.

## RESTRICTED RIGHTS LEGEND

Use, duplication or disclosure by the U.S. Government is subject to the restrictions set forth in subparagraph (c) (1) (ii) of The Rights in Technical Data and Computer Software Clause at DFARS 252.227-7013 or in subparagraph (c)(1) and (2) of the Commercial Computer Software - Restricted Rights clauses at 48 C.F.R. 52.227-19 or as specified in 48 C.F.R. 227-7202-2 of the DoD F.A.R. Supplement and its successors, or as specified in 48 C.F.R. 12.212 of the Federal Acquisition Regulations and its successors, as applicable. The specification copyright owners are as indicated above and may be contacted through the Object Management Group, 109 Highland Avenue, Needham, MA 02494, U.S.A.

## TRADEMARKS

CORBA<sup>®</sup>, CORBA logos<sup>®</sup>, FIBO<sup>®</sup>, Financial Industry Business Ontology<sup>®</sup>, FINANCIAL INSTRUMENT GLOBAL IDENTIFIER<sup>®</sup>, IIOP<sup>®</sup>, IMM<sup>®</sup>, Model Driven Architecture<sup>®</sup>, MDA<sup>®</sup>, Object Management Group<sup>®</sup>, OMG<sup>®</sup>, OMG Logo<sup>®</sup>, SoaML<sup>®</sup>, SOAML<sup>®</sup>, SysML<sup>®</sup>, UAF<sup>®</sup>, Unified Modeling Language<sup>®</sup>, UML<sup>®</sup>, UML Cube Logo<sup>®</sup>, VSIPL<sup>®</sup>, and XMI<sup>®</sup> are registered trademarks of the Object Management Group, Inc.

For a complete list of trademarks, see: [http://www.omg.org/legal/tm\\_list.htm](http://www.omg.org/legal/tm_list.htm). All other products or company names mentioned are used for identification purposes only, and may be trademarks of their respective owners.

## COMPLIANCE

The copyright holders listed above acknowledge that the Object Management Group (acting itself or through its designees) is and shall at all times be the sole entity that may authorize developers, suppliers and sellers of computer software to use certification marks, trademarks or other special designations to indicate compliance with these materials.

Software developed under the terms of this license may claim compliance or conformance with this specification if and only if the software compliance is of a nature fully matching the applicable compliance points as stated in the specification. Software developed only partially matching the applicable compliance points may claim only that the software was based on this specification, but may not claim compliance or conformance with this specification. In the event that testing suites are implemented or approved by Object Management Group, Inc., software developed using this specification may claim compliance or conformance with the specification only if the software satisfactorily completes the testing suites.

## OMG's Issue Reporting Procedure

All OMG specifications are subject to continuous review and improvement. As part of this process we encourage readers to report any ambiguities, inconsistencies, or inaccuracies they may find by completing the Issue Reporting Form listed on the main web page <http://www.omg.org>, under Documents, Report a Bug/Issue (<http://issues.omg.org/issues/create-new-issue>).

# Table of Contents

1	Scope.....	1
1.1	Overview.....	1
1.2	Metadata.....	2
2	Conformance.....	3
3	References.....	4
3.1	Normative References.....	4
3.2	Non-Normative References.....	5
4	Terms and Definitions.....	6
5	Symbols.....	7
5.1	Symbols.....	7
5.2	Abbreviations.....	7
6	Additional Information.....	8
6.1	Acknowledgments.....	8
6.2	Notation.....	8
7	Architecture.....	11
7.1	“About” the LCC Ontologies.....	11
7.2	Namespace Definitions.....	11
8	Language Ontologies.....	13
8.1	Overview.....	13
8.2	Module: Languages.....	13
8.3	Ontology: Language Representation.....	13
8.4	Ontology: ISO 639-1 Language Codes.....	29
8.5	Ontology: ISO 639-2 Language Codes.....	29
9	Country Ontologies.....	31
9.1	Overview.....	31
9.2	Module: Countries.....	31
9.3	Ontology: Country Representation.....	31
9.4	Ontology: ISO 3166-1 Country Codes.....	41
9.5	Ontology: ISO 3166-2 Subdivision Codes.....	42
9.6	Ontology: Standard Country or Area Codes for Statistical Use (M49).....	42
	Annex A: Deliverables.....	45
	Annex B: ISO 3166-2 Regions.....	47
	Annex C: Generating Ontologies from External Code Definitions.....	61

# Preface

## OMG

Founded in 1989, the Object Management Group, Inc. (OMG) is an open membership, not-for-profit computer industry standards consortium that produces and maintains computer industry specifications for interoperable, portable, and reusable enterprise applications in distributed, heterogeneous environments. Membership includes Information Technology vendors, end users, government agencies, and academia.

OMG member companies write, adopt, and maintain its specifications following a mature, open process. OMG's specifications implement the Model Driven Architecture<sup>®</sup> (MDA<sup>®</sup>), maximizing ROI through a full-lifecycle approach to enterprise integration that covers multiple operating systems, programming languages, middleware and networking infrastructures, and software development environments. OMG's specifications include: UML<sup>®</sup> (Unified Modeling Language<sup>®</sup>); CORBA<sup>®</sup> (Common Object Request Broker Architecture); CWM<sup>™</sup> (Common Warehouse Metamodel<sup>™</sup>); and industry-specific standards for dozens of vertical markets.

More information on the OMG is available at <http://www.omg.org/>.

## OMG Specifications

As noted, OMG specifications address middleware, modeling and vertical domain frameworks. All OMG Specifications are available from the OMG website at:

<http://www.omg.org/spec>

Specifications are organized by the following categories:

### Business Modeling Specifications

### Middleware Specifications

- CORBA/IIOP
- Data Distribution Services
- Specialized CORBA

### IDL/Language Mapping Specifications

### Modeling and Metadata Specifications

- UML, MOF, CWM, XMI
- UML Profiles

### Modernization Specifications

### Platform Independent Model (PIM), Platform Specific Model (PSM), Interface Specifications

- CORBAServices
- CORBAFacilities

### OMG Domain Specifications

## **CORBA Embedded Intelligence Specifications**

## **CORBA Security Specifications**

## **Signal and Image Processing Specifications**

All of OMG's formal specifications may be downloaded without charge from our website. (Products implementing OMG specifications are available from individual suppliers.) Copies of specifications, available in PostScript and PDF format, may be obtained from the Specifications Catalog cited above or by contacting the Object Management Group, Inc. at:

OMG Headquarters  
109 Highland Avenue  
Needham, MA 02494  
USA

Tel: +1-781-444-0404  
Fax: +1-781-444-0320  
Email: [pubs@omg.org](mailto:pubs@omg.org)

Certain OMG specifications are also available as ISO standards. Please consult <http://www.iso.org>

## **Typographical Conventions**

The type styles shown below are used in this document to distinguish programming statements from ordinary English. However, these conventions are not used in tables or section headings where no distinction is necessary.

Times/Times New Roman/Liberation Serif – 10 pt.: Standard body text

Helvetica/Arial – 10 pt. Bold: OMG Interface Definition Language (OMG IDL) and syntax elements.

Courier – 10 pt. Bold: Programming language elements.

Helvetica/Arial – 10 pt: Exceptions

NOTE: Terms that appear in italics are defined in the glossary. Italic text also represents the name of a document, specification, or other publication.

## **Issues**

The reader is encouraged to report any technical or editing issues/problems with this specification via the report form at:

<http://issues.omg.org/issues/create-new-issue>



This page intentionally left blank.

# 1 Scope

The Languages, Countries, and Codes (LCC) Specification provides metamodels, in the form of ontologies, and models files that consist of individuals defined by those metamodels, representing commonly used codes for the representation of languages and regions, including countries and their subdivisions. While most organizations recognize the ISO 639 standard as the primary source for definition of languages world-wide, and many organizations use the country codes contained in ISO 3166, most governments maintain their own extensions and modifications to the ISO 3166 codes for political and other purposes. Many also reference the United Nations Standard country or area codes for statistical use (M49) together with ISO 3166 as the basis for managing and interpreting regional statistical information. In response to this need and given that the ISO and U.N. codes have not been published by those organizations as RDF vocabularies to date, the OMG LCC standard is designed to fill the gap. It supports the ISO standard language and country codes, the UN M49 region codes, and enables development of other sets of codes using a standard vocabulary and ontology for languages, regions, and countries that users might require. These ontologies are essential for many government, commercial, and academic applications and ontology development activities, ranging from business vocabularies, taxonomies, and nomenclatures, to semantically rich applications, and at OMG, they are required to support the Financial Industry Business Ontology (FIBO) family of standards, among others.

## 1.1 Overview

The Languages, Countries and Codes (LCC) specification includes two modules:

(1) Languages, which includes three ontologies:

- Language Representation, which provides the concepts and relationships that correspond to all six parts of ISO 639 and are derived from ISO 630-4,
- ISO 639-1 Language Codes, which covers the two character digraphs (codes) representing the 180+ languages that are most commonly used in terminology, lexicography, and linguistics, and
- ISO 639-2, which provides the three character trigraphs (codes) for all of the languages specified in ISO 639-1 as well as additional languages and language groups that are relatively commonly used.

(2) Countries, which includes the following:

- Country Representation, which provides the concepts and relationships defining geographic regions, geopolitical entities, countries, subdivisions, high-level relationships between them, and related coding systems,
- ISO 3166-1 Country Codes, which covers the two and three character country codes representing the almost 250 countries, territories, and other entities that are recognized by the United Nations, and
- ISO 3166-2 Subdivision Codes, which provides composite (country + subdivision) codes and subdivision definitions for all of the entities covered by ISO 3166-1.

Coverage of the other parts of ISO 639, including ISO 639-3, which provides comprehensive coverage of every known individual language spoken around the world, including many historical and extinct languages, ISO 639-5, which includes language families and groups, and ISO 639-6, which addresses language variants, may be added as requirements for these codes arise.

## 1.2 Metadata

Annotations on concepts, properties, and individuals in this specification follow the general policies recommended by the OMG Architecture Board, including the use of (1) the Dublin Core Metadata Terms<sup>1</sup>, (2) the Simple Knowledge Organization System (SKOS)<sup>2</sup>, and (3) the OMG's Specification Metadata<sup>3</sup>. In general, every element in the ontologies must have a definition, and in many cases in the Language Representation and Country Representation ontologies, the source section of the relevant standard is referenced.

---

<sup>1</sup> See <http://www.dublincore.org/documents/dcmi-terms/> for more information about the Dublin Core and DCMI

<sup>2</sup> See <http://www.w3.org/2004/02/skos/> for more information about the Simple Knowledge Organization System (SKOS)

<sup>3</sup> The AB Recommendation for Specification Metadata is available at <http://www.omg.org/techprocess/ab/SpecificationMetadata.rdf>.

## 2 Conformance

The Languages, Countries, and Codes (LCC) specification provides a number of possible conformance points for implementers. These fall into the following categories:

- (1) Specification-level conformance with the RDF/OWL ontologies, which means that the subject application formally imports (*i.e.*, through `owl:imports` statements in another ontology or via loading the full set of ontologies for reference in a knowledge base that supports RDF/OWL);
- (2) Ontology-level conformance – which means that the subject application formally imports one or more of the LCC ontologies but may not import all of them;
- (3) Linked Data-level conformance – which means that the subject application references, but may not formally import, one or more of the LCC ontologies;
- (4) UML Model-level conformance – which means that the subject application reuses either the ODM XMI or UML XMI models that make up the LCC specification, for example, to use the reference language or country codes in another UML model (including, but not limited to an ODM-compliant model).

These should be considered independent conformance points, although applications providing specification-level conformance will, by definition, also support ontology- and linked data-level conformance. Applications providing ontology-level conformance will, by definition, have linked data-level conformance.

In all four (4) cases, implementers may extend any of the LCC ontologies as necessary, to add language or country codes required between releases, or to add application-specific codes needed to address various requirements. Typically such extensions will entail ontology-level conformance. We encourage implementers to submit any requirements for extension to the relevant LCC task force, as appropriate.

Note that ontology-level conformance implies that there is a list of LCC ontologies that have been imported into the conforming application, tool, or ontology. Implementers are required to provide that list with their conformance statements, including the appropriate `owl:versionIRI` for each of the LCC ontologies they support.

## 3 References

### 3.1 Normative References

Note that for the ISO specifications listed herein, in cases where there are registration authorities (RA) for the codes, the latest version as of the `owl:versionIRI` in the ontology metadata has been used for development of this specification. The latest version published by the relevant RA is more recent than what has been published by ISO in all cases. The task force intends that subsequent revisions of this specification should be maintained in such a way as to be current with respect to the codes published by the appropriate RA to the degree possible.

<i>Reference</i>	<i>Description</i>
[Dublin Core]	DCMI Metadata Terms, Issued 2013-06-14 by the Dublin Core Metadata Initiative. Available at <a href="http://www.dublincore.org/documents/dcmi-terms/">http://www.dublincore.org/documents/dcmi-terms/</a> .
[ISO 639-1]	ISO 639-1:2002 Codes for the representation of names of languages – Part 1: Alpha-2 code
[ISO 639-2]	ISO 639-2:1998 Codes for the representation of names of languages – Part 2: Alpha-3 code
[ISO 639-3]	ISO 639-3:2007 Codes for the representation of names of languages – Part 3: Alpha-3 code for comprehensive coverage of languages
[ISO 639-4]	ISO 639-4:2010 Codes for the representation of names of languages – Part 4: General principles of coding of the representation of names of languages and related entities, and application guidelines
[ISO 639-5]	ISO 639-5:2008 Codes for the representation of names of languages – Part 5: Alpha-3 code for language families and groups
[ISO 639-6]	ISO 639-6:2009 Codes for the representation of names of languages – Part 6: Alpha-4 code for comprehensive coverage of language variants
[ISO 704]	ISO 704:2000 Terminology Work – Principles and Methods
[ISO 1087]	ISO 1087-1:2000 Terminology – Vocabulary – Part 1: Theory and application
[ISO 3166-1]	ISO 3166-1:2013 Codes for the representation of names of countries and their subdivisions – Part 1: Country codes
[ISO 3166-2]	ISO 3166-2:2013 Codes for the representation of names of countries and their subdivisions – Part 2: Country subdivision code
[ISO 3166-3]	ISO 3166-3:2013 Codes for the representation of names of countries and their subdivisions – Part 3:

	Code for formerly used names of countries
[MOF Core]	Meta Object Facility (MOF™) Core. Available at <a href="http://www.omg.org/spec/MOF/">http://www.omg.org/spec/MOF/</a>
[MOF XMI]	MOF 2/XMI (XML Metadata Interchange) Mapping Specification. Available at <a href="http://www.omg.org/spec/XMI/">http://www.omg.org/spec/XMI/</a>
[ODM]	Ontology Definition Metamodel (ODM. Available at <a href="http://www.omg.org/spec/ODM/">http://www.omg.org/spec/ODM/</a>
[OMG AB Specification Metadata]	OMG Architecture Board recommendations for specification of ontology metadata, Available at <a href="http://www.omg.org/techprocess/ab/SpecificationMetadata.rdf">http://www.omg.org/techprocess/ab/SpecificationMetadata.rdf</a>
[OWL 2]	OWL 2 Web Ontology Language Quick Reference Guide (Second Edition), W3C Recommendation 11 December 2012. Available at <a href="http://www.w3.org/TR/2012/REC-owl2-quick-reference-20121211/">http://www.w3.org/TR/2012/REC-owl2-quick-reference-20121211/</a> .
[RDF Concepts]	RDF 1.1 Concepts and Abstract Syntax. Richard Cyganiak, David Wood and Markus Lanthaler, Editors. W3C Recommendation, 25 February 2014. Available at <a href="http://www.w3.org/TR/rdf11-concepts/">http://www.w3.org/TR/rdf11-concepts/</a>
[RDF Schema]	RDF Schema 1.1. Dan Brickley and R.V. Guha, Editors. W3C Recommendation, 25 February 2014. Available at <a href="http://www.w3.org/TR/rdf-schema/">http://www.w3.org/TR/rdf-schema/</a> .
[SKOS]	SKOS Simple Knowledge Organization System Reference, W3C Recommendation 18 August 2009. Available at <a href="http://www.w3.org/TR/2009/REC-skos-reference-20090818/">http://www.w3.org/TR/2009/REC-skos-reference-20090818/</a> .
[UML2]	Unified Modeling Language™ (UML®). Available at <a href="http://www.omg.org/spec/UML/">http://www.omg.org/spec/UML/</a>
[Unicode]	<i>The Unicode Standard, Version 3</i> , The Unicode Consortium, Addison-Wesley, 2000. ISBN 0-201-61633-5, as updated from time to time by the publication of new versions. (See <a href="http://www.unicode.org/unicode/standard/versions/">http://www.unicode.org/unicode/standard/versions/</a> for the latest version and additional information on versions of the standard and of the Unicode Character Database).
[UTF-8]	RFC 3629: UTF-8, a transformation format of ISO 10646. F. Yergeau. IETF, November 2003, <a href="http://www.ietf.org/rfc/rfc3629.txt">http://www.ietf.org/rfc/rfc3629.txt</a>
[W3C Datatypes in RDF and OWL]	XML Schema Datatypes in RDF and OWL, W3C Working Group Note 14 March 2006, Available at <a href="http://www.w3.org/TR/2006/NOTE-swbp-xsch-datatypes-20060314/">http://www.w3.org/TR/2006/NOTE-swbp-xsch-datatypes-20060314/</a> .
[XML Schema Datatypes]	XML Schema Part 2: Datatypes. W3C Recommendation 28 October 2004. Available at <a href="http://www.w3.org/TR/xmlschema-2/">http://www.w3.org/TR/xmlschema-2/</a> .

## 3.2 Non-Normative References

The following informative documents are referenced in this specification:

<i>Reference</i>	<i>Description</i>
[BCP 47]	BCP 47, Tags for Identifying Languages, see <a href="http://tools.ietf.org/html/bcp47">http://tools.ietf.org/html/bcp47</a>
[DL Handbook]	THE DESCRIPTION LOGIC HANDBOOK: Theory, implementation, and applications. Baader, McGuinness, Nardi, and Patel-Schneider, editors. Cambridge University Press, Cambridge, United Kingdom, 2003.

## 4 Terms and Definitions

For the purposes of this specification, the following terms and definitions apply. See sections 8 and 9 in this specification for more detailed definitions of several of the terms listed below.

Term	Definition
Country	a geopolitical entity representing a country or dependent territory
CountrySubdivision	a geopolitical entity, typically a division of a country, dependency, or other area of special geopolitical interest related to a country or other geopolitical entity
GeographicRegionIdentifier	a string of letters assigned to a country or other geopolitical region for the purpose of uniquely representing it
Language	a systematic use of sounds, characters, symbols or signs to communicate meaning
LanguageIdentifier	a string of characters that uniquely identifies a linguistic entity
Ontology	An ontology specifies a rich description of the <ul style="list-style-type: none"><li>• Terminology, concepts, nomenclature</li><li>• Relationships among and between concepts and individuals</li><li>• Sentences distinguishing concepts, refining definitions and relationships (constraints, restrictions, regular expressions) relevant to a particular domain or area of interest<sup>4</sup>.</li></ul>

---

<sup>4</sup> Kendall, Elisa and McGuinness, Deborah: "Ontology 101: An Introduction to Knowledge Representation & Ontology Development", Tutorial given at Smart Data 2015, August 18<sup>th</sup>, 2015, San Jose, CA.

# **5 Symbols**

## **5.1 Symbols**

There are no symbols introduced by this specification.

## **5.2 Abbreviations**

The following abbreviations are used throughout this specification:

IRI – Internationalized (Uniform) Resource Identifier

LCC – Languages, Countries and Codes

OWL – Web Ontology Language

ODM – Ontology Definition Metamodel

RDF – Resource Definition Framework

UML – Unified Modeling Language

URI – Uniform Resource Identifier

URL – Uniform Resource Locator

XMI – XML Metadata Interchange

XML – eXtensible Markup Language



# 6 Additional Information

## 6.1 Acknowledgments

The following organization submitted this specification:

- Adaptive, Inc.
- Thematix Partners LLC
- Unisys

The following companies and organizations are strong supporters of this specification:

- EDM Council

## 6.2 Notation

The diagrams included herein are ODM-compliant UML diagrams, in other words, they conform to the UML Profiles for RDF and OWL specified in the OMG's Ontology Definition Metamodel [ODM] Specification. This includes the set of UML stereotypes and graphical notation used in the diagrams provided.

The color scheme employed in these diagrams includes:

- Basic OWL Classes: white for classes defined within the current (local) ontology, amber for classes defined within an imported (referenced) ontology
- OWL Restriction Classes and other Class Expressions (unions, intersection, complements): green
- OWL Object Properties: blue
- OWL Data Properties: dark gray
- OWL Datatypes: pink
- OWL Individuals: light gray

These colors are provided for clarification purposes only, and are non-normative.

Within the context of this, a module is a group of ontologies, organized as a subdomain with respect to the LCC namespace and as a folder from a file management perspective. Several ontologies are contained in each of the two modules in this specification, which include Languages and Countries. For each module there is an "about" file, which provides metadata about the module, specified herein in tabular form. Each of the primary ontologies in a given module is defined as an ODM-compliant UML model as well as in OWL (aside from the "about" file, which is expressed in RDF/OWL, RDF/XML and Turtle serializations only). The normative ontology is expressed in ODM XMI (*i.e.*, XMI that conforms to the ODM metamodels for RDF and OWL), ODM UML XMI (*i.e.*, that conforms to the UML Profiles for RDF and OWL in the ODM specification), and in RDF/XML serialized OWL 2.

The notation used to represent description logic expressions (*i.e.*, the expressions in the Parent columns in class tables containing ontology details) is consistent with the notation defined in the Description Logic Handbook [DL Handbook]. Some of the basics are described in Table 6-1, below. Note that this is not intended to be comprehensive, but includes the primary patterns that are used in the LCC specification, for property restrictions in particular.

**Table 6-1 Description Logic Expressions Notation**

Construct	Description	Notation
<b>Boolean Connectives and Enumeration</b>		
intersection	The intersection of two classes consists of exactly those individuals which are instances of both classes.	$C \cap D$
union	The union of two classes contains every individual which is contained in at least one of these classes.	$C \cup D$
enumeration	An enumeration defines a class by enumerating all its instances.	oneOf ( $i_1, i_2, i_3, \dots, i_n$ )
<b>Property Restrictions</b>		
universal quantification	Universal quantification is used to specify a class of individuals for which all related individuals must be instances of a given class ( <i>i.e.</i> , allValuesFrom in OWL).	$\forall R.C$ , where R is the relation (property) and C is the class that constrains all values for related individuals
existential quantification	Existential quantification is used to specify a class as the set of all individuals that are connected via a particular property to at least one individual which is an instance of a certain class ( <i>i.e.</i> , someValuesFrom in OWL).	$\exists R.C$ , where R is the relation (property) and C is the class that constrains some values of related individuals
individual value	Individual value restrictions are used to specify classes of individuals that are related to one particular individual ( <i>i.e.</i> , hasValue in OWL).	$\forall R.I$ , where R is the relation (property) and I is the individual
exact cardinality	Cardinality (number) restrictions specify classes by restricting the cardinality on the sets of fillers for roles (relationships, or properties in OWL). Exact cardinality restrictions restrict the cardinality of possible fillers to exactly the number specified.	$= n R$ (for unqualified restrictions) $= n R.C$ (for qualified restrictions, <i>i.e.</i> , including onClass or on DataRange)
maximum cardinality	Maximum cardinality restrictions restrict the cardinality of possible fillers to at most the number specified (inclusive).	$\leq n R$ (for unqualified restrictions) $\leq n R.C$ (for qualified restrictions)
minimum cardinality	Minimum cardinality restrictions restrict the cardinality of possible fillers to at least the number specified (inclusive).	$\geq n R$ (for unqualified restrictions) $\geq n R.C$ (for qualified restrictions)
<b>Class Axioms</b>		
equivalent classes	Two classes are considered equivalent if they contain exactly the same individuals.	$\equiv C$
disjoint classes	Disjointness means that membership in one class specifically excludes membership in another.	$\neg C$

Within the tabular representation for restrictions in the tables included herein, the identifiers for the restrictions shown in the diagrams are included parenthetically following the logic expressions. These are not part of the logic, but are

included for comparison purposes. The identifiers are named based on the precedent set in the FIBO specifications, which includes the namespace prefix for the ontology followed by a unique number, and are unique within the context of an individual ontology only.

Additionally, some restrictions are nested, whereby the content of an embedded (nested) restriction is also included parenthetically. In these cases, all of the identifiers will be included, also parenthetically, following the complete specification of the complex restriction. Note too that in the case of complex restrictions, where there are nested elements in parentheses, the “dot notation” used as a separator between a property and the role filler is replaced with the embedded parenthetical filler definition. A “role” from a description logic perspective is essentially a property in OWL, and the role “filler” is the class or individual that provides the value for that role in a given axiom (*i.e.* in a restriction or other logic expression).

The majority of the property restrictions specified in LCC are defined as necessary conditions for class membership, rather than sufficient conditions. As a result, the tables assume that necessary conditions is the default and only in cases where a restriction imposes sufficient conditions will that be stated.

# 7 Architecture

## 7.1 “About” the LCC Ontologies

The “about” files for LCC provide content describing the specification and each of the modules, complementing the content in this specification and in some cases duplicating it in the form of RDF/OWL metadata. These files are designed to (1) describe the machine-readable content of the specification for people who download that content directly, via content negotiations, and import it into tools that can interpret and display those files, (2) for potential use in tagging the specification document on the OMG site, and (3) to provide high-level ontologies including AboutLCC-1.0.rdf and AboutLCC-1.0-Regions.rdf that import all of the constituent ontologies for ease of use (similar to “make files” for software).

## 7.2 Namespace Definitions

The namespaces and prefixes corresponding to external elements required for use in LCC are provided. Table 7-1 lists the prefixes and namespaces on which LCC depends that are external to LCC. Table 7-2 provides the namespace declarations required for use of LCC itself. The prefixes provided in Tables 7-1 and 7-2 are normative, and their use is required in any conformant extension.

**Table 7-1 Prefix and Namespaces for referenced/external vocabularies**

Namespace Prefix	Namespace
rdf	<a href="http://www.w3.org/1999/02/22-rdf-syntax-ns#">http://www.w3.org/1999/02/22-rdf-syntax-ns#</a>
rdfs	<a href="http://www.w3.org/2000/01/rdf-schema#">http://www.w3.org/2000/01/rdf-schema#</a>
owl	<a href="http://www.w3.org/2002/07/owl#">http://www.w3.org/2002/07/owl#</a>
xsd	<a href="http://www.w3.org/2001/XMLSchema#">http://www.w3.org/2001/XMLSchema#</a>
dct	<a href="http://purl.org/dc/terms/">http://purl.org/dc/terms/</a>
skos	<a href="http://www.w3.org/2004/02/skos/core#">http://www.w3.org/2004/02/skos/core#</a>
sm	<a href="http://www.omg.org/techprocess/ab/SpecificationMetadata/">http://www.omg.org/techprocess/ab/SpecificationMetadata/</a>

The namespace approach taken for LCC is based on OMG guidelines and is constructed as follows:

- A standard prefix <http://www.omg.org/spec/>
- The abbreviation for the specification: in this case LCC
- The ontology name (including the module)

Note that the URI/IRI strategy for the ontologies in LCC takes a “slash” rather than “hash” approach, in order to accommodate server-side applications. Namespace prefixes are constructed as follows with the components separated by “-“:

- The specification abbreviation: lcc
- An abbreviation for the ontology name

The namespaces and prefixes corresponding for the Languages, Countries, and Codes ontologies are summarized in Table 7-2. These are given by module, and within a module in alphabetical order, rather than with any intent to show

imports relationships. The table includes the namespace definitions for the “about” files that are part of the machine-readable deliverables for the specification, but that are not required for imports closure. Note that these are not versioned, although version IRIs are included in every OWL ontology and are documented in the metadata for each of them.

**Table 7-2 Prefix and Namespaces for Languages, Countries and Codes (LCC)**

Namespace Prefix	Namespace
lcc-spc	<a href="http://www.omg.org/spec/LCC/AboutLCC/">http://www.omg.org/spec/LCC/AboutLCC/</a>
lcc-spc-1.0	<a href="http://www.omg.org/spec/LCC/1.0/AboutLCC-1.0/">http://www.omg.org/spec/LCC/1.0/AboutLCC-1.0/</a>
lcc-spc-1.0-reg	<a href="http://www.omg.org/spec/LCC/1.0/AboutLCC-1.0-Regions/">http://www.omg.org/spec/LCC/1.0/AboutLCC-1.0-Regions/</a>
lcc-lng	<a href="http://www.omg.org/spec/LCC/Languages/AboutLanguages/">http://www.omg.org/spec/LCC/Languages/AboutLanguages/</a>
lcc-lr	<a href="http://www.omg.org/spec/LCC/Languages/LanguageRepresentation/">http://www.omg.org/spec/LCC/Languages/LanguageRepresentation/</a>
lcc-639-1	<a href="http://www.omg.org/spec/LCC/Languages/ISO639-1-LanguageCodes/">http://www.omg.org/spec/LCC/Languages/ISO639-1-LanguageCodes/</a>
lcc-639-2	<a href="http://www.omg.org/spec/LCC/Languages/ISO639-2-LanguageCodes/">http://www.omg.org/spec/LCC/Languages/ISO639-2-LanguageCodes/</a>
lcc-cty	<a href="http://www.omg.org/spec/LCC/Countries/AboutCountries/">http://www.omg.org/spec/LCC/Countries/AboutCountries/</a>
lcc-cr	<a href="http://www.omg.org/spec/LCC/Countries/CountryRepresentation/">http://www.omg.org/spec/LCC/Countries/CountryRepresentation/</a>
lcc-3166-1	<a href="http://www.omg.org/spec/LCC/Countries/ISO3166-1-CountryCodes/">http://www.omg.org/spec/LCC/Countries/ISO3166-1-CountryCodes/</a>
lcc-3166-2	<a href="http://www.omg.org/spec/LCC/Countries/ISO3166-2-SubdivisionCodes/">http://www.omg.org/spec/LCC/Countries/ISO3166-2-SubdivisionCodes/</a>
lcc-m49	<a href="http://www.omg.org/spec/LCC/Countries/UN-M49-RegionCodes/">http://www.omg.org/spec/LCC/Countries/UN-M49-RegionCodes/</a>

Individual namespace prefixes for the ISO 3166-2 region codes are formulated as “lcc-3166-2-`<xx>`”, where `<xx>` is a two-character, lower case code corresponding to the ISO 3166-1 alpha 2 code for the country whose regions are represented therein. Individual namespaces for the ISO 3166-2 region codes are formulated as [http://www.omg.org/spec/LCC/Countries/Regions/ISO3166-2-SubdivisionCodes-`<XX>`](http://www.omg.org/spec/LCC/Countries/Regions/ISO3166-2-SubdivisionCodes-<code><XX></code>), where `<XX>` is a two-character, upper case code corresponding to the ISO 3166-1 alpha 2 code for the country whose regions are represented therein. See Annex B for a complete list of the namespaces and corresponding countries for which region codes are available.

## 8 Language Ontologies

### 8.1 Overview

This section defines the terms, definitions, relationships, and additional logic specified in the ontologies that make up the Languages Module.

### 8.2 Module: Languages

The Languages module includes three primary ontologies, as well as an “about” file, namely:

- Language Representation, which provides the concepts and relationships that correspond to all six parts of ISO 639 and are derived primarily from ISO 630-4;
- ISO 639-1 Language Codes, which covers the two character digraphs (codes) representing the 180+ languages that are most commonly used in terminology, lexicography, and linguistics, and
- ISO 639-2, which provides the three character trigraphs (codes) for all of the languages specified in ISO 639-1 as well as additional languages and language groups that are relatively commonly used.

Metadata contained in the “about” file that describes the module is given in Table 8-1.

**Table 8-1 Languages Module Metadata**

Metadata Term	Value
sm:filename	AboutLanguages.rdf
sm:fileAbbreviation	lcc-lng
OntologyIRI	<a href="http://www.omg.org/spec/LCC/Languages/AboutLanguages/">http://www.omg.org/spec/LCC/Languages/AboutLanguages/</a>
owl:versionIRI	<a href="http://www.omg.org/spec/LCC/20170801/Languages/AboutLanguages/">http://www.omg.org/spec/LCC/20170801/Languages/AboutLanguages/</a>
sm:moduleName	Languages
sm:moduleAbbreviation	LCC-LNG
sm:moduleVersion	1.0
sm:moduleAbstract	This module contains ontologies representing languages commonly used in business, including human and machine-interpretable languages. The main body of the module is based on ISO 639 as well as the language element of the Language Tag specified in BCP 47 (RFC 4646, RFC 4647), to provide a systematic description of the vocabulary used for language representation, including natural and artificial languages.

### 8.3 Ontology: Language Representation

This ontology, based on ISO 639 as well as the language element of the Language Tag specified in BCP 47 (RFC 4646, RFC 4647), provides a systemic description of the vocabulary used for language representation, including natural and artificial languages.

ISO 639 provides two language codes, one as a two-letter code (ISO 639-1) and another as a three-letter code (ISO 639-2, ISO 639-3, ISO 639-5) for the representation of names of languages. ISO 639-1 was devised primarily for use in terminology, lexicography, and linguistics. ISO 639-2 represents all of the languages contained in ISO 639-1, additional languages and language groups, as they may be coded for special purposes when more specificity in coding is needed. The languages listed in ISO 639-1 are a subset of the languages listed in ISO 639-2; every language code element in the two-letter code has a corresponding language code element in the three-letter code, but not necessarily vice versa. ISO 639-4 provides the basis for describing languages, as defined in this ontology, and additional codes are provided in 639-5 and other parts of the standard, again with more details about macrolanguages, other lesser known independent languages, and special language groups.

ISO 639-3 extends the set of three-letter codes provided in 639-2 to cover all of the natural, human languages in use today, along with many well-known ancient, extinct, and historical languages, including written and signed languages. It also identifies the codes found in 639-2 that represent families or groups of languages rather than a single human language, depending on the perspective of the consumer.

The Registration Authority for ISO 639-1 is the International Information Centre for Terminology, ISO 639-1/RA. This organization is responsible for maintenance of Part-1, and more information can be found at [http://www.infoterm.info/standardization/iso\\_639\\_1\\_2002.php](http://www.infoterm.info/standardization/iso_639_1_2002.php), although the actual code set is maintained by the US Library of Congress, together with the code set for ISO 639-2.

The Registration Authority for ISO 639-2 is the Library of Congress, ISO 639-2/RA. The Library of Congress is responsible for maintenance of Part-2, at <http://www.loc.gov/standards/iso639-2/iso639-2ra.html>. Current code sets for ISO 639-1 and ISO 639-2 are available from this site, as mentioned above. In addition to the material covered in the basic standard, the Library of Congress also publishes the German names for all languages, which is reflected in the properties given below. See [http://loc.gov/standards/iso639-2/php/code\\_list.php](http://loc.gov/standards/iso639-2/php/code_list.php) for the latest release.

The Registration Authority for ISO 639-3 is SIL International, ISO 639-3/RA. SIL International is responsible for maintenance of Part-3, and more information can be found at <http://www.sil.org/iso639-3/default.asp>.

The codes included herein also correspond to the language element of the Language Tag specified in BCP 47 (RFC 4646, RFC 4647), and can be used for matching or other application development purposes (e.g., use of language identifier literals in applications that build up the RFC 4646 based tags).

This ontology (Language Representation) defines the model for the standard, based in part on ISO 639-4, with individual codes for the other parts of the standard represented in dependent models.

**Table 8-2 Language Representation Ontology Metadata**

Metadata Term	Value
sm:filename	LanguageRepresentation.rdf
sm:fileAbbreviation	lcc-lr
OntologyIRI	<a href="http://www.omg.org/spec/LCC/Languages/LanguageRepresentation/">http://www.omg.org/spec/LCC/Languages/LanguageRepresentation/</a>
owl:versionIRI	<a href="http://www.omg.org/spec/LCC/20170801/Languages/LanguageRepresentation/">http://www.omg.org/spec/LCC/20170801/Languages/LanguageRepresentation/</a>
sm:directSource	ISO 639-1 Codes for the representation of names of languages - Part 1: Alpha-2 code, First edition, 2002-07-15 ISO 639-2 Codes for the representation of names of languages - Part 2: Alpha-3 code, First edition, 1998-11-01 ISO 639-3 Codes for the representation of names of languages - Part 3: Alpha-3 code for comprehensive

	<p>coverage of languages, First edition, 2007-02-01</p> <p>ISO 639-4 Codes for the representation of names of languages - Part 4: General principles of coding of the representation of names of languages and related entities, and application guidelines, First edition, 2010-07-15</p> <p>ISO 639-5 Codes for the representation of names of languages - Part 5: Alpha-3 code for language families and groups, First edition, 2008-05-15</p> <p>ISO 639-6 Codes for the representation of names of languages - Part 6: Alpha-4 code for comprehensive coverage of language variants, First edition, 2009-12-01</p>
sm:relatedSpecification	BCP 47, Tags for Identifying Languages, see <a href="http://tools.ietf.org/html/bcp47">http://tools.ietf.org/html/bcp47</a>
sm:historyNote	<p>This ontology is ultimately intended to represent all of ISO 639 for reference purposes, and to be sufficiently extensible to accommodate new sections or modifications as they are published. The current version of the ontology (including subordinate modules containing the language names and codes) provides a unique English name (i.e., the reference name from 639-3) for each language, with UTF-8 encoded literals specifying alternates in English, French, and Indigenous languages where present in the standard, and in German corresponding to the names on the LoC web site.</p> <ol style="list-style-type: none"> <li>1. Where multiple English names occur in 639-1 and 639-2, we have used the primary name specified in 639-2:1998 superseded by the latest revision posted by the registration authority, or, where multiples are specified by the registration authority, the reference name from ISO 639-3 as the 'named individual name' for a given language. For languages specified in ISO 639-1, there is at least one English name and at least one French name for every language, corresponding to exactly one alpha-2 code. Most languages from ISO 639-1 have at least one indigenous name. Most languages with codes available from the Library of Congress also have at least one German name. The correspondence between the alpha-2 codes and languages are made explicit in the individuals representing the codes themselves, and can be inferred for the languages using an OWL DL reasoner.</li> <li>2. This release of the ontology covers all languages specified in parts 1 and 2 of the standard, and categorizes the alpha-3 codes from part 2 according to the categorization scheme provided in parts 3 and 4. Subsequent releases of the ontology will address additional languages covered in part 3, as well as additional components of the standard, such as equivalence to standards representing relevant scripts, as they become available, and the language groups covered by ISO 639-5.</li> <li>3. We have used individuals to represent all alpha-2 and alpha-3 codes, which, in turn, have matching strings (tags) associated with them for use in a variety of applications to facilitate reasoning and mapping. The strings are provided as datatype properties of the individuals to support applications that may require them for RFC 4646-style tagging.</li> <li>4. Note that some tools, including certain UML tools, are case insensitive. Thus, in cases where a language name</li> </ol>



collides with an alpha-2 or alpha-3 code, (i.e., Ga, Ewe, Fon, Ido, Lao, Tiv, Twi, Vai, and Yao), the names for the individual codes have been extended with '\_' (e.g., 'ewe\_1').

5. We found a few anomalies in the standards while developing this ontology. These include:

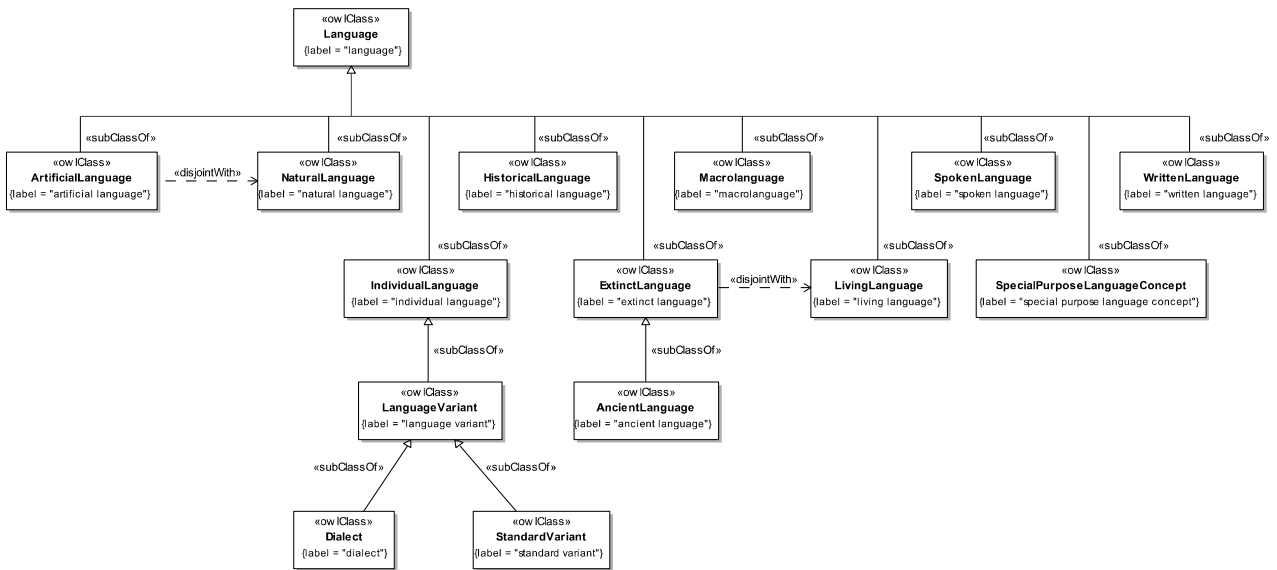
(1) Bihari is included in the 2002 version of 639-1, in the 1998 version of 639-2, and in the online codes posted by the Library of Congress in 2007 for parts 1 and 2, with part 1 code of 'bh' and part 2 bibliographic and terminology codes of 'bih'. At that time, there was no discussion stating that Bihari is a collective language, although it was omitted from the downloadable data for 639-3. Since then, the language element has been renamed 'Bihari languages', in both English and French, without change to the corresponding language codes. The latest version of the code sets reflect this modification. Our assumption is that the trigraph for Bihari is a collective language code, which is supported by online research in Eastern Indic languages.

(2) Serbo-Croatian was included in the 2002 version of 639-1, with part 1 code 'sh'. It was not mentioned in the 1998 version of 639-2, but appears in 639-3 with a language identifier of 'hbs', without codes for 639-2. As of 2010, Serbo-Croatian has been eliminated from ISO 639-1 and 639-2 codes altogether, and the ontology reflects this.

(3) Other changes in the latest version of the ontology include elimination of the 639-1 code for Moldavian, merging the language with Romanian, and additional English and French names for some languages, such as Dutch (to include Flemish, flamais), among others.

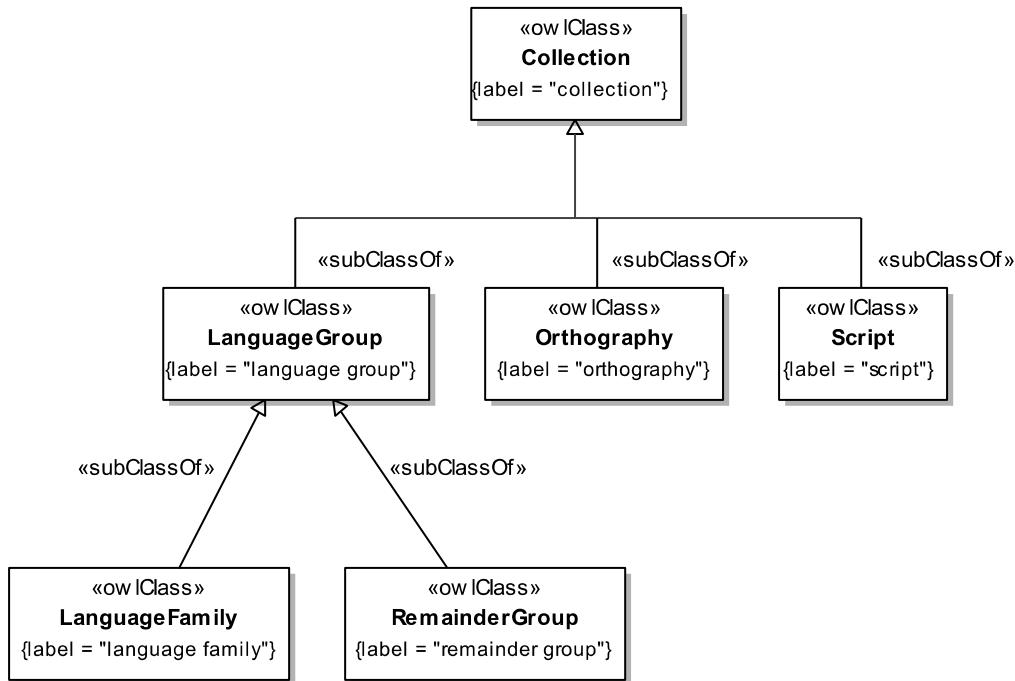
(4) German names for languages in ISO 639-2 were added to the Library of Congress in 2014, and are supported in this version of the ontology.

6. The LCC 1.0 version of this ontology, published in advance of the 2017 New Orleans OMG Technical Meeting, was current as of 31 July 2017 with respect to the ISO 639-1 and 639-2 codes included herein.



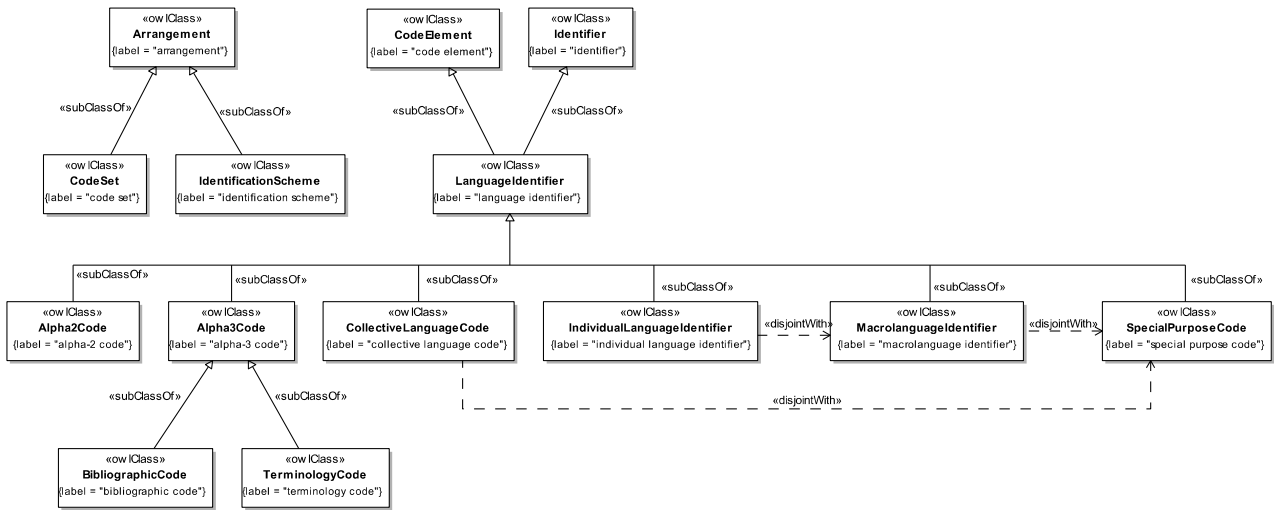
**Figure 8.1 Language Class Hierarchy**

Figure 8.1 provides the primary inheritance hierarchy for languages, including the disjoint relationship between extinct and living languages.



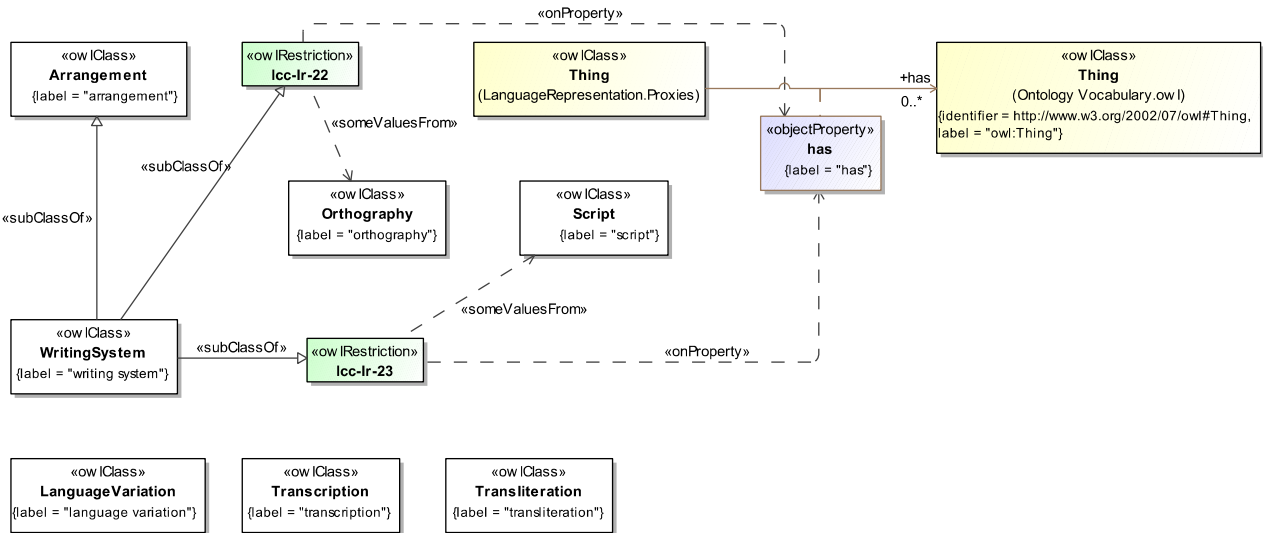
**Figure 8.2 Collection Class Hierarchy**

The primary collection concepts are shown in Figure 8.2. These include not only language groups of various sorts but the concept of an orthography for a language and one or more scripts for a language, which are collections of rules and symbols.



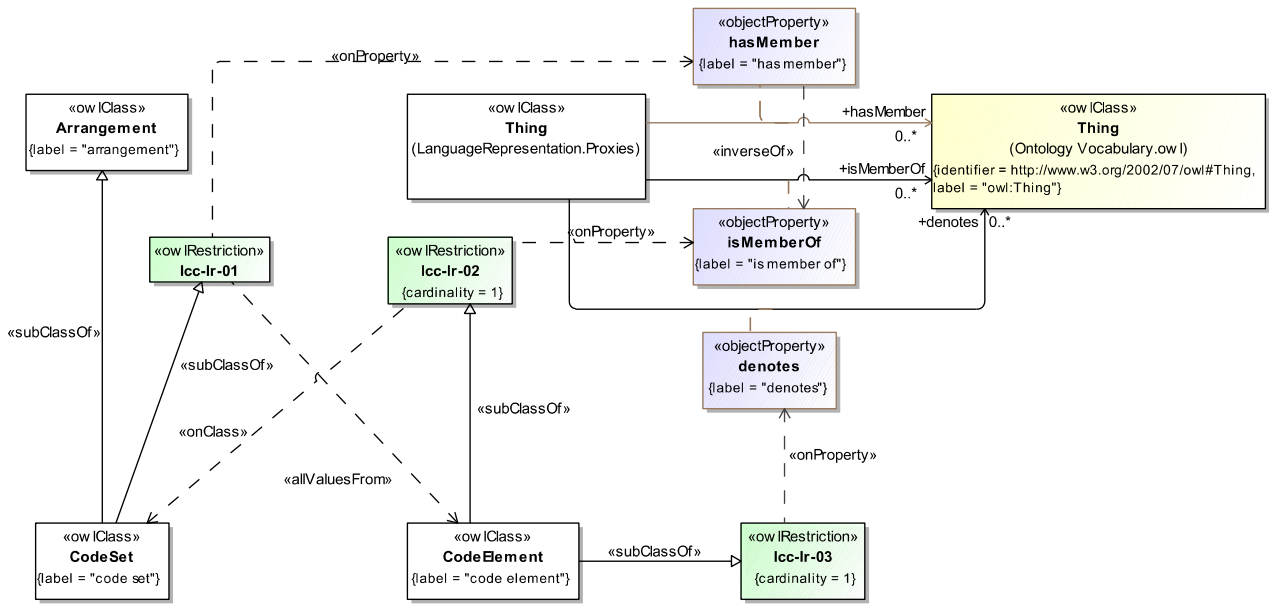
**Figure 8.3 Identifier and Code Class Hierarchy**

Figure 8.3 provides a view of the identifier and code concepts in the ontology, including disjoint relationships among the three-character language codes.



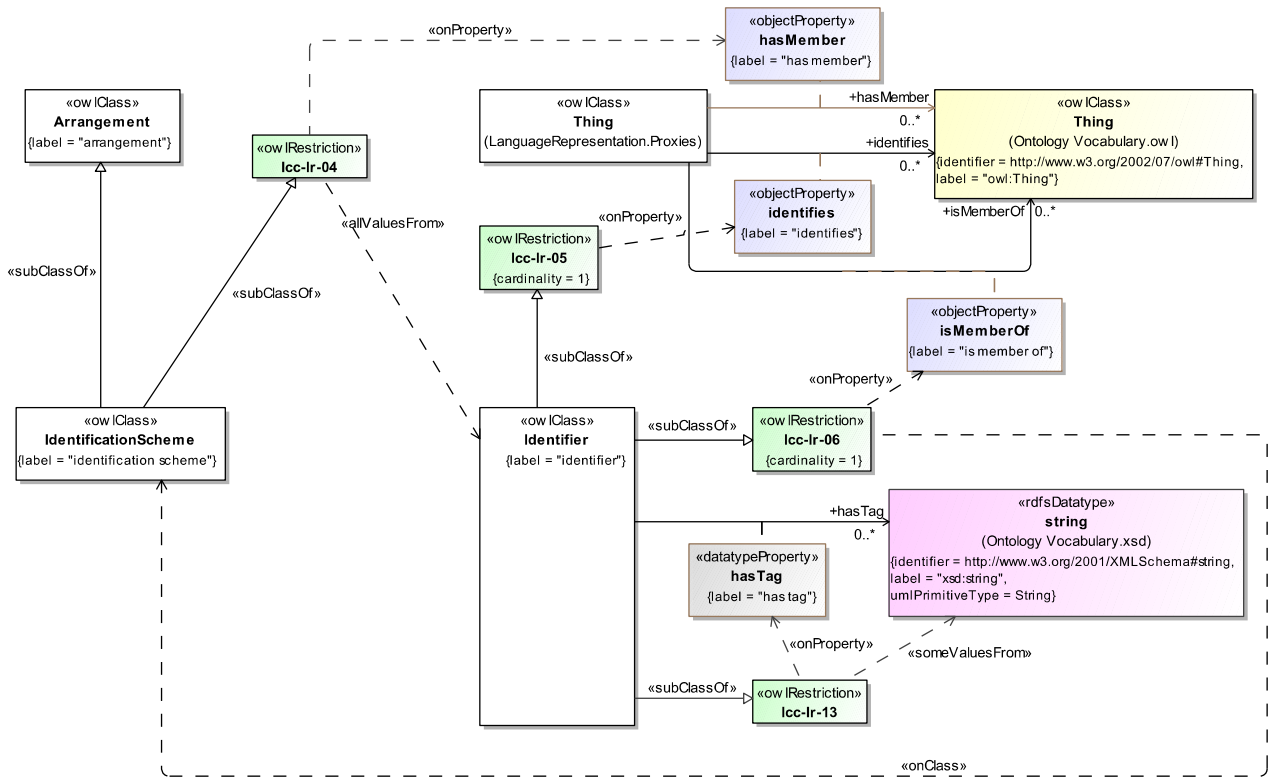
**Figure 8.4 Systems and Processes in Language Analysis**

The remaining concepts defined in ISO 639, for several processes and systems related to language, are given in Figure 8.4.



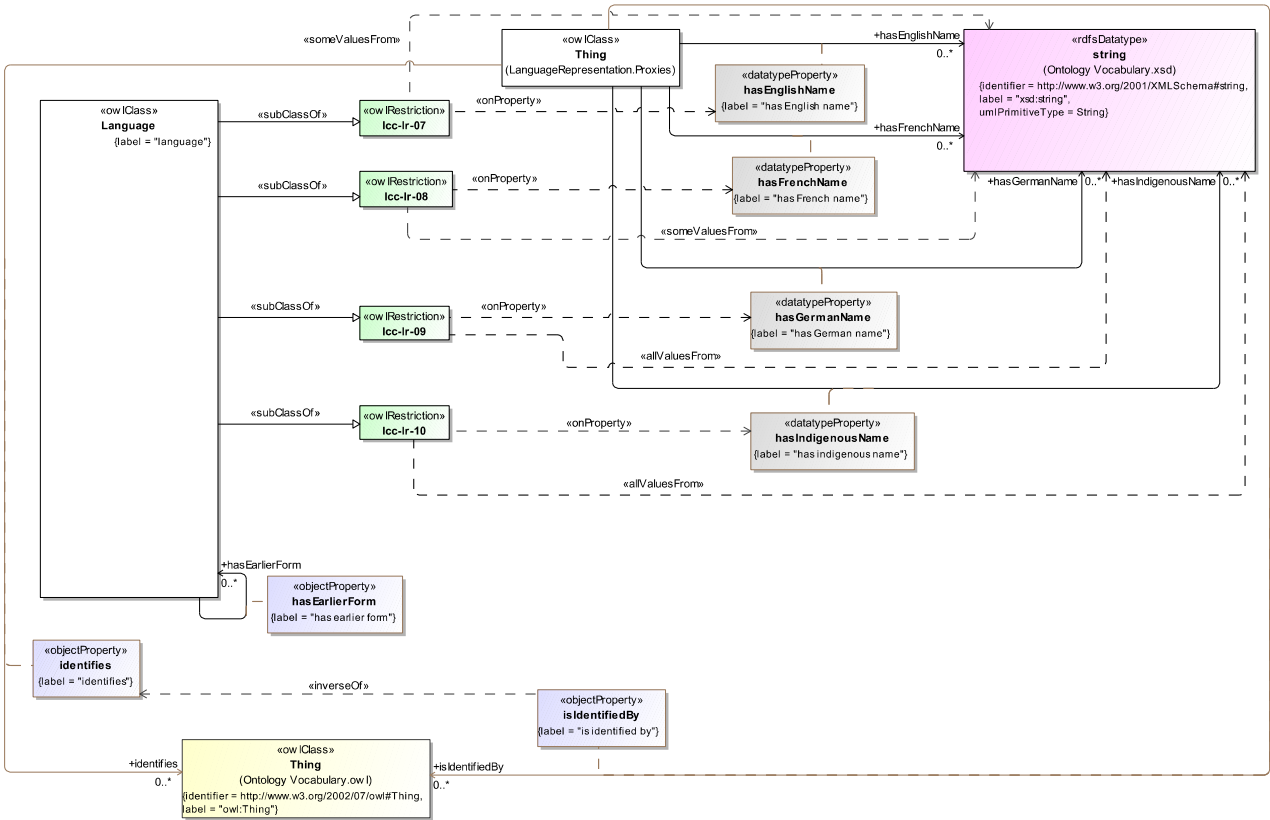
**Figure 8.5 Definition of Code Set and Code Element**

Figure 8.5 elaborates the definitions for code sets and code elements, which are fundamental to both ISO 639 and ISO 3166.



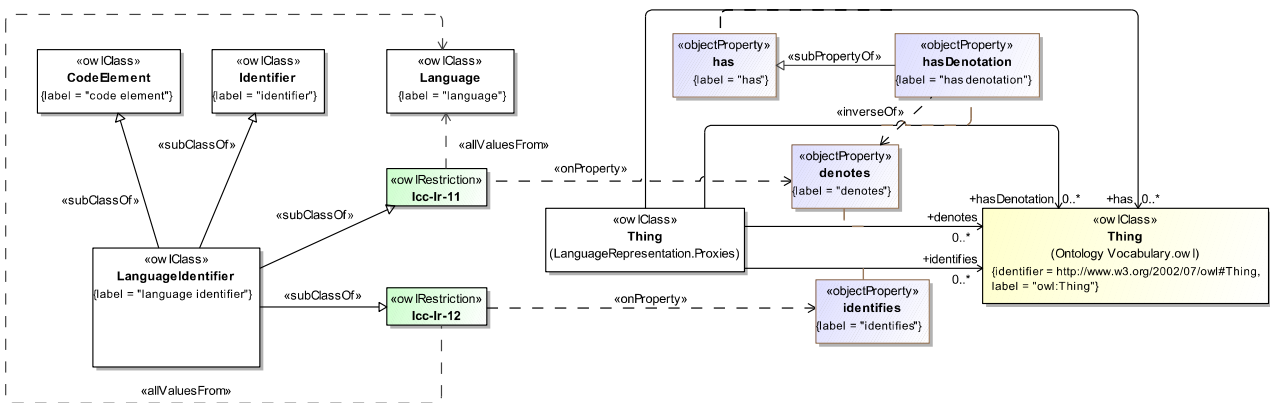
**Figure 8.6 Definition of Identification Schemes and Identifiers**

Figure 8.6 defines identification schemes and identifiers, which are also fundamental to both ISO 639 and ISO 3166.



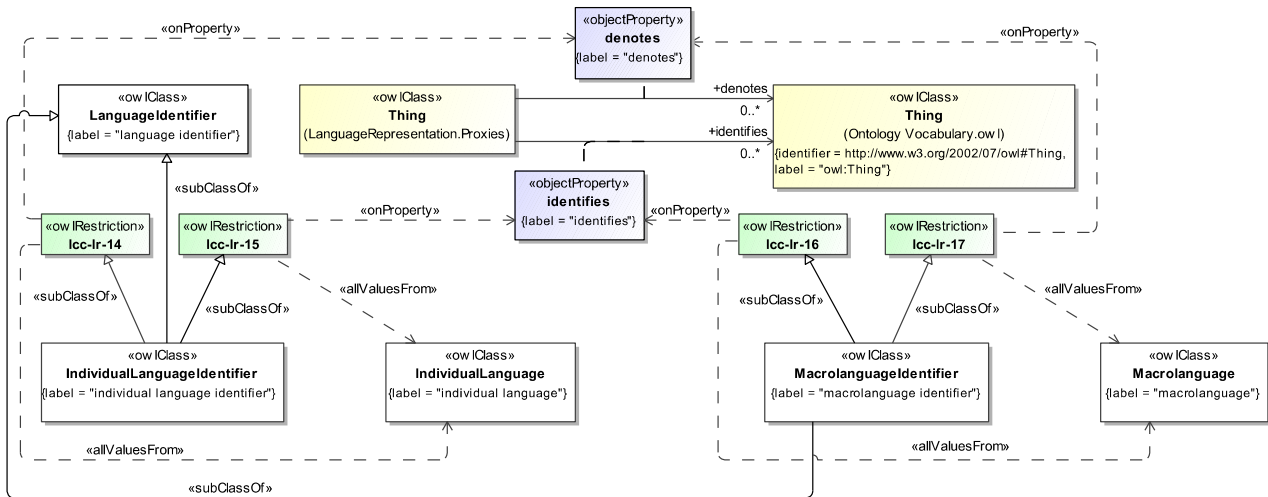
**Figure 8.7 Definition of Language**

As shown in Figure 8.7, there are a number of potential names associated with a given language as specified in the ISO 639 standard. German names have been added to the standard on the registration authority web sites.



**Figure 8.8 Definition of Language Identifier**

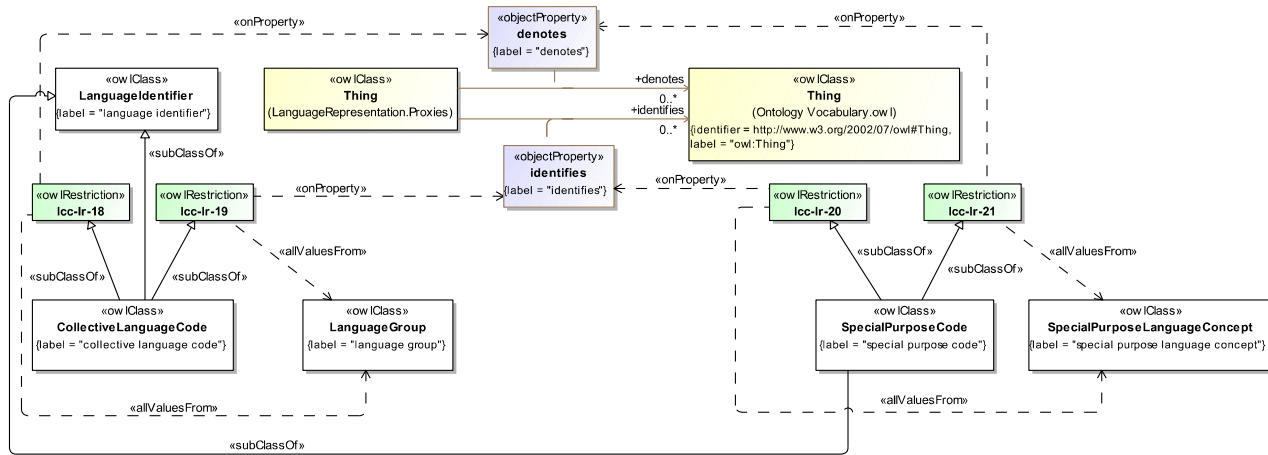
Figure 8.8 provides the full definition of a language identifier, which the various kinds of ISO 639 language codes inherit.



**Figure 8.9 Definition of Individual and Macrolanguage Identifiers**

ISO 639 differentiates between individual language and macrolanguages, including between the respective identifiers, where a macrolanguage represents multiple individual languages in some contexts but are treated as a single language in ISO 639-2, as shown in Figure 8.9.

Finally, Figure 8.10 provides the definitions for the identifiers specific to language groups and special purpose concepts, as used in ISO 639.



**Figure 8.10 Definitions of Identifiers for Language Groups and Special Purpose Concepts**

The detailed annotations and axioms that comprise the ontology are provided in Table 8-3, below.

**Table 8-3 Language Representation Ontology Details**

**Classes**

Name	Annotations	Class Expressions
<p><b>Alpha2Code</b> (alpha-2 code)</p>	<p><u>Definition</u>: a language identifier for a human language as defined by ISO 639-1, that is, a two-letter combination of characters used to represent a language or languages</p> <p><u>Note</u>: In the ISO 639-1 language code, each language identifier is composed of two letters (lower case letters from the Latin alphabet, corresponding to characters 97 through 122 of the UTF-8 encoding), without diacritical marks or other encodings of any kind.</p> <p><u>Scope note</u>: The identifiers are not abbreviations for the languages they identify. They are derived in some way from the indigenous language name or from preferences of the relevant speech community.</p> <p><u>Source</u>: Section 4.1, ISO 639-1</p> <p><u>See also</u>: <a href="https://en.wikipedia.org/wiki/UTF-8">https://en.wikipedia.org/wiki/UTF-8</a></p>	<p><u>Parent Class</u>: LanguageIdentifier</p>
<p><b>Alpha3Code</b> (alpha-3 code)</p>	<p><u>Definition</u>: a language identifier for a human language as defined by ISO 639, that is, a three-letter combination of characters used to represent a language or languages</p> <p><u>Note</u>: In the ISO 639-2 language code, each language identifier is composed of three letters (lower case letters from the Latin alphabet, corresponding to characters 97 through 122 of the UTF-8 encoding), without diacritical marks or other encodings of any kind.</p> <p><u>Note</u>: Two code sets are provided in ISO 639-2, one for bibliographic applications and one for terminology applications. Some of these are considered collective language codes, referring to a family of languages, and there are a few special purpose codes for use in various applications. ISO 639-3 provides a single, three character code for each individual language or macrolanguage. Additional codes for language families and groups are specified in other parts of the standard.</p> <p><u>Source</u>: Section 3.2, ISO 639-2</p> <p><u>See also</u>: <a href="https://en.wikipedia.org/wiki/UTF-8">https://en.wikipedia.org/wiki/UTF-8</a></p>	<p><u>Parent Class</u>: LanguageIdentifier</p>
<p><b>AncientLanguage</b> (ancient language)</p>	<p><u>Definition</u>: an extinct language that has an attested literature and is recognized as having special status in the academic community</p> <p><u>Note</u>: Ancient languages may have either individual or collective language codes. See section 4.1.5, ISO 639-2, for an explanation of the latter case.</p> <p><u>Source</u>: Section 3.25 and 4.7, ISO 639-4</p>	<p><u>Parent Class</u>: ExtinctLanguage</p>
<p><b>Arrangement</b> (arrangement)</p>	<p><u>Definition</u>: a structure or means of organizing information such as a schema, numbering system, organization scheme, measurement system,</p>	



	taxonomy, or language for organizing information	
<b>ArtificialLanguage</b> (artificial language)	<p><u>Definition:</u> a language for human communication that has been artificially devised</p> <p><u>Note:</u> Artificial languages do not include reconstructed languages or computer programming languages.</p> <p><u>Source:</u> Section 3.28 and 4.8, ISO 639-4</p>	<p><u>Parent Class:</u> Language</p> <p><u>Class Axiom:</u> <math>\neg</math> NaturalLanguage</p>
<b>BibliographicCode</b> (bibliographic code)	<p><u>Definition:</u> an alpha-3 code that is a member of the set of bibliographic codes in ISO 639-2</p>	<p><u>Parent Class:</u> Alpha3Code</p>
<b>CodeElement</b> (code element)	<p><u>Definition:</u> a sequence of characters denoting something that it is associated with for some purpose, within a specified context, according to some rule set</p> <p><u>Source:</u> ISO/IEC 11179-3 Information technology - Metadata registries (MDR) - Part 3: Registry metamodel and basic attributes, Third edition, 2013-02-15</p>	<p><u>Property Restriction:</u> = 1 isMemberOf.CodeSet (lcc-lr-02)</p> <p><u>Property Restriction:</u> = 1 denotes (lcc-lr-03)</p>
<b>CodeSet</b> (code set, coding scheme)	<p><u>Definition:</u> a system of alpha-numeric symbols, or combinations of symbols, that stand for specified values in some context</p> <p><u>Source:</u> ISO/IEC 11179-3 Information technology - Metadata registries (MDR) - Part 3: Registry metamodel and basic attributes, Third edition, 2013-02-15</p>	<p><u>Parent Class:</u> Arrangement</p> <p><u>Property Restriction:</u> <math>\forall</math> hasMember.CodeElement (lcc-lr-01)</p>
<b>Collection</b> (collection)	<p><u>Definition:</u> a grouping of some variable number of things (may be zero) that have some shared significance</p>	
<b>CollectiveLanguageCode</b> (collective language code)	<p><u>Definition:</u> a language identifier or code used to represent a group of languages</p> <p><u>Note:</u> See section 4.1.1, ISO 639-2, for an explanation of the usage of such codes, and section 4.1.3 to gain understanding of the distinction between collective language and macrolanguage codes.</p> <p><u>Source:</u> Sections 3.3 and 4.1.1, and 4.1.3, ISO 639-2; Section 4.6, ISO 639-4</p>	<p><u>Parent Class:</u> LanguageIdentifier</p> <p><u>Class Axiom:</u> <math>\neg</math> SpecialPurposeCode</p> <p><u>Property Restriction:</u> <math>\forall</math> denotes.LanguageGroup (lcc-lr-18)</p> <p><u>Property Restriction:</u> <math>\forall</math> identifies.LanguageGroup (lcc-lr-19)</p>
<b>Dialect</b> (dialect)	<p><u>Definition:</u> a language variant that is specific to a geographical region or speech community</p> <p><u>Note:</u> Dialects are typically represented via the same language code as the code for the primary language, with a few exceptions for well-known dialects. See sections 4.1.3 and 4.1.4, ISO 639-2 for additional details on the treatment of dialects in the standard.</p> <p><u>Source:</u> Sections 3.8, 4.2, and 4.5, ISO 639-4; Sections 4.1.3 and 4.1.4, ISO 639-2</p>	<p><u>Parent Class:</u> LanguageVariant</p>
<b>ExtinctLanguage</b> (extinct language)	<p><u>Definition:</u> an individual language or variant that is no longer in use and has no current descendant</p> <p><u>Source:</u> Section 3.24 and 4.7, ISO 639-4</p>	<p><u>Parent Class:</u> Language</p> <p><u>Class Axiom:</u> <math>\neg</math> LivingLanguage</p>
<b>HistoricalLanguage</b> (historical language)	<p><u>Definition:</u> a well-known prior version of a living language</p>	

	or extinct language <u>Source</u> : Section 3.26 and 4.7, ISO 639-4	
<b>IdentificationScheme</b> (identification scheme)	<u>Definition</u> : a system for allocating identifiers to objects <u>Source</u> : ISO/IEC 11179-3 Information technology - Metadata registries (MDR) - Part 3: Registry metamodel and basic attributes, Third edition, 2013-02-15	<u>Parent Class</u> : Arrangement <u>Property Restriction</u> : $\forall$ hasMember.Identifier (lcc-lr-04)
<b>Identifier</b> (identifier)	<u>Definition</u> : a sequence of characters uniquely identifying something that it is associated with for some purpose and within a specified context <u>Note</u> : Text-valued tags are included here as they may be useful for automated transformation or encoding systems, such as those used to produce IETF compliant language tags in XML. <u>Source</u> : ISO/IEC 11179-3 Information technology - Metadata registries (MDR) - Part 3: Registry metamodel and basic attributes, Third edition, 2013-02-15	<u>Property Restriction</u> : = 1 isMemberOf.IdentificationScheme (lcc-lr-06) <u>Property Restriction</u> : = 1 identifies (lcc-lr-05) <u>Property Restriction</u> : $\exists$ hasTag.string (lcc-lr-13)
<b>IndividualLanguage</b> (individual language)	<u>Definition</u> : a language that can be distinguished from another language by some set of rules <u>Note</u> : Identifiers in Parts 1, 2, and 3 of ISO 639 are assumed to denote distinct individual languages, unless the language name explicitly refers to a language group. See section 4.2 in ISO 639-4 for a detailed explanation of the definition of individual language in the context of the ISO 639 standard. <u>Source</u> : Section 3.7, ISO 639-4	<u>Parent Class</u> : Language
<b>IndividualLanguageIdentifier</b> (individual language identifier)	<u>Definition</u> : a language identifier whose scope is that of an individual (distinct) language <u>Source</u> : Section 3.7, ISO 639-3	<u>Parent Class</u> : LanguageIdentifier <u>Class Axiom</u> : $\neg$ MacrolanguageIdentifier <u>Property Restriction</u> : $\forall$ denotes.IndividualLanguage (lcc-lr-14) <u>Property Restriction</u> : $\forall$ identifies.IndividualLanguage (lcc-lr-15)
<b>Language</b> (language)	<u>Definition</u> : a systematic use of sounds, characters, symbols or signs to communicate meaning <u>Source</u> : Section 3.6, ISO 639-4	<u>Property Restriction</u> : $\geq$ 1 hasEnglishName.string (lcc-lr-07) <u>Property Restriction</u> : $\geq$ 1 hasFrenchName.string (lcc-lr-08) <u>Property Restriction</u> : $\forall$ hasGermanName.string (lcc-lr-9) <u>Property Restriction</u> : $\forall$ hasIndigenousName.string (lcc-lr-10)
<b>LanguageFamily</b> (language family)	<u>Definition</u> : a group of individual languages related to each other through common ancestry <u>Source</u> : Section 3.11, ISO 639-4	<u>Parent Class</u> : LanguageGroup
<b>LanguageGroup</b> (language group)	<u>Definition</u> : a collection of two or more individual languages, treated as a group for some purpose	<u>Parent Class</u> : Collection

	<p><u>Note</u>: See section 4.6 in ISO 639-4 for additional explanatory material for language groups.</p> <p><u>Direct source</u>: Section 3.10, ISO 639-4</p>	
<b>LanguageIdentifier</b> (language identifier, language symbol)	<p><u>Definition</u>: a string of characters that uniquely identifies a linguistic entity</p> <p><u>Scope note</u>: In the language codes of Parts 1, 2, 3, and 5 of ISO 639, each language identifier is composed of two or three letters.</p> <p><u>Source</u>: Section 3.5, ISO 639-4</p>	<p><u>Parent Class</u>: CodeElement</p> <p><u>Parent Class</u>: Identifier</p> <p><u>Property Restriction</u>: <math>\forall</math> denotes.Language (lcc-lr-11)</p> <p><u>Property Restriction</u>: <math>\forall</math> identifies.Language (lcc-lr-12)</p>
<b>LanguageVariant</b> (language variant)	<p><u>Definition</u>: a variation of an individual language that is sufficiently unique that it can be identified and named</p> <p><u>Source</u>: Section 3.14, ISO 639-4</p>	<u>Parent Class</u> : IndividualLanguage
<b>LanguageVariation</b> (language variation)	<p><u>Definition</u>: continuous variation within and between individual languages</p> <p><u>Note</u>: Language variation may include change over time, space, cultural affiliation, etc.</p> <p><u>Source</u>: Section 3.13, ISO 639-4</p>	
<b>LivingLanguage</b> (living language)	<p><u>Definition</u>: an individual language or variant in use today by some speech community</p> <p><u>Source</u>: Section 3.23, ISO 639-4</p>	<u>Parent Class</u> : Language
<b>Macrolanguage</b> (macrolanguage)	<p><u>Definition</u>: a language that may be viewed in some circumstances as an individual language, but actually represents two or more individual languages</p> <p><u>Note</u>: See sections 4.1 and 4.3 of ISO 639-4 for an extensive description of macrolanguages and how they are different from language groups.</p> <p><u>Source</u>: Section 3.9, ISO 639-4</p>	<u>Parent Class</u> : Language
<b>MacrolanguageIdentifier</b> (macrolanguage identifier)	<p><u>Definition</u>: a language identifier whose scope is that of a macrolanguage</p> <p><u>Source</u>: Section 3.7, ISO 639-3</p>	<p><u>Parent Class</u>: LanguageIdentifier</p> <p><u>Class Axiom</u>: <math>\neg</math> SpecialPurposeCode</p> <p><u>Property Restriction</u>: <math>\forall</math> denotes.Macrolanguage (lcc-lr-17)</p> <p><u>Property Restriction</u>: <math>\forall</math> identifies.Macrolanguage (lcc-lr-16)</p>
<b>NaturalLanguage</b> (natural language)	<p><u>Definition</u>: a language used in human communications that is not artificial in nature</p> <p><u>Source</u>: Section 3.27, ISO 639-4</p>	<u>Parent Class</u> : Language
<b>Orthography</b> (orthography)	<p><u>Definition</u>: a set of conventions and rules for representing language in written form</p> <p><u>Note</u>: The orthographic rules for a given language may include rules of spelling, hyphenation, capitalization, word breaks, emphasis, and punctuation. Languages that have multiple writing systems may have distinct orthographies and scripts.</p> <p><u>Source</u>: Section 3.27, ISO 639-4</p>	<u>Parent Class</u> : Collection

<b>RemainderGroup</b> (remainder group)	<u>Definition</u> : a group of languages that explicitly excludes certain individual languages  <u>Source</u> : Section 3.12, ISO 639-4	<u>Parent Class</u> : LanguageGroup
<b>Script</b> (script)	<u>Definition</u> : a set of graphic characters used to represent one or more languages in writing  <u>Note</u> : Use of multiple writing systems does not mean that multiple language identifiers are necessary for a language. ISO 639 language identifiers may be combined with script identifiers from ISO 15924 (e.g., BCP 47).  <u>Source</u> : Section 3.17, ISO 639-4	<u>Parent Class</u> : Collection
<b>SpecialPurposeCode</b> (special purpose code)	<u>Definition</u> : a language identifier whose scope is that of a special purpose language construct  <u>Source</u> : Section 3.7, ISO 639-3	<u>Parent Class</u> : LanguageIdentifier  <u>Property Restriction</u> : $\forall$ denotes.SpecialPurposeLanguageConcept (lcc-lr-21)  <u>Property Restriction</u> : $\forall$ identifies.SpecialPurposeLanguageConcept (lcc-lr-20)
<b>SpecialPurposeLanguageConcept</b> (special purpose language concept)	<u>Definition</u> : a language concept introduced in ISO 639-3 to satisfy special-purpose requirements, typically to support application constraints  <u>Source</u> : Section 4.2.6, ISO 639-3	<u>Parent Class</u> : Language
<b>SpokenLanguage</b> (spoken language)	<u>Definition</u> : an individual language or language variant that is articulated through speech (oral or vocal) sounds  <u>Source</u> : Section 3.22, ISO 639-4	<u>Parent Class</u> : Language
<b>StandardVariant</b> (standard variant)	<u>Definition</u> : a language variant with a high degree of status and normalization, typically used in public discourse, centers of government and commerce  <u>Source</u> : Section 3.15, ISO 639-4	<u>Parent Class</u> : LanguageVariant
<b>TerminologyCode</b> (terminology code)	<u>Definition</u> : a language identifier whose scope is that of terminological codes  <u>Source</u> : Section 3.7, ISO 639-3	<u>Parent Class</u> : Alpha3Code
<b>Transcription</b> (transcription)	<u>Definition</u> : the representation of speech or signing in written form  <u>Note</u> : The resulting text is also referred to as a transcription.  <u>Source</u> : Section 3.19, ISO 639-4	
<b>Transliteration</b> (transliteration)	<u>Definition</u> : the conversion of text from one script to another without loss of information  <u>Note</u> : The resulting text is also referred to as a transliteration.  <u>Source</u> : Section 3.20, ISO 639-4	
<b>WritingSystem</b> (writing system)	<u>Definition</u> : a system for writing a language, including the requisite script and character set  <u>Source</u> : Section 3.16, ISO 639-4	<u>Parent Class</u> : Arrangement  <u>Property Restriction</u> : $\exists$ has.Orthography (lcc-lr-22)

		<u>Property Restriction</u> : $\exists$ has.Script (lcc-lr-23)
<b>WrittenLanguage</b> (written language)	<u>Definition</u> : the representation of a language via a writing system, with a relatively normalized orthography  <u>Source</u> : Section 3.21, ISO 639-4	<u>Parent Class</u> : Language

## Properties

Name	Annotations	Property Axioms
<b>denotes</b> (denotes)	<u>Definition</u> : serves as a linguistic expression of the notion of, means	
<b>has</b> (has)	<u>Definition</u> : indicates that someone (or something) possesses something, as a characteristic, attribute, feature, capability, and so forth	
<b>hasDenotation</b> (has denotation)	<u>Definition</u> : has meaning, expresses	<u>Parent Property</u> : has <u>Inverse</u> : denotes
<b>hasEarlierForm</b> (has earlier form)	<u>Definition</u> : relates a language to an earlier form (historically significant) of that same language	<u>Parent Property</u> : has <u>Domain</u> : Language <u>Range</u> : Language
<b>hasMember</b> (has member)	<u>Definition</u> : relates something, typically a collection, group or organization, to some discrete thing identified as a member of it	<u>Inverse</u> : isMemberOf
<b>identifies</b> (identifies)	<u>Definition</u> : recognizes or establishes within some context	
<b>isIdentifiedBy</b> (is identified by)	<u>Definition</u> : has an indicator or label, that is unique within some context	<u>Inverse</u> : identifies
<b>isMemberOf</b> (is member of)	<u>Definition</u> : belongs, either individually or collectively, to a group	
<b>hasName</b> (has name)	<u>Definition</u> : associates a name, reference name, or appellation with an individual concept  <u>Source</u> : Section 3.4, ISO 639-3	<u>Range</u> : string
<b>hasEnglishName</b> (has English name)	<u>Definition</u> : associates a name in English with an individual concept  <u>Source</u> : Section 3.4, ISO 639-3	<u>Parent Property</u> : hasName <u>Range</u> : string
<b>hasFrenchName</b> (has French name)	<u>Definition</u> : associates a name in French with an individual concept  <u>Source</u> : Section 3.4, ISO 639-3	<u>Parent Property</u> : hasName <u>Range</u> : string
<b>hasGermanName</b> (has German name)	<u>Definition</u> : associates a name in German with an individual concept	<u>Parent Property</u> : hasName <u>Range</u> : string
<b>hasIndigenousName</b> (has indigenous name)	<u>Definition</u> : associates a local regional or cultural name with an individual concept  <u>Source</u> : Section 3.4, ISO 639-3	<u>Parent Property</u> : hasName <u>Range</u> : string
<b>hasTag</b> (has tag)	<u>Definition</u> : a unique combination of alphanumeric characters corresponding to the identifier	<u>Domain</u> : Identifier

## 8.4 Ontology: ISO 639-1 Language Codes

This ontology represents the subset of the ISO 639 standard that provides the language names and actual codes for ISO 639-1, updated to reflect changes identified on the Library of Congress site as of the date of the version IRI.

**Table 8-4 ISO 639-1 Language Codes Ontology Metadata**

Metadata Term	Value
sm:filename	ISO639-1-LanguageCodes.rdf
sm:fileAbbreviation	lcc-639-1
OntologyIRI	<a href="http://www.omg.org/spec/LCC/Languages/ISO639-1-LanguageCodes/">http://www.omg.org/spec/LCC/Languages/ISO639-1-LanguageCodes/</a>
owl:versionIRI	<a href="http://www.omg.org/spec/LCC/20170801/Languages/ISO639-1-LanguageCodes/">http://www.omg.org/spec/LCC/20170801/Languages/ISO639-1-LanguageCodes/</a>
sm:dependsOn	<a href="http://www.omg.org/spec/LCC/Languages/LanguageRepresentation/">http://www.omg.org/spec/LCC/Languages/LanguageRepresentation/</a>
skos:changeNote	The <a href="http://www.omg.org/spec/LCC/20151101/Languages/ISO639-1-LanguageCodes.rdf">http://www.omg.org/spec/LCC/20151101/Languages/ISO639-1-LanguageCodes.rdf</a> version of this ontology has been revised to reflect the issues addressed by the LCC 1.0 FTF report. The codes themselves are current as of 31 July 2017, based on the US Library of Congress site.

Note that this ontology consists entirely of individuals representing the ISO 639-1 code set, language, and language codes, and therefore is not modeled herein. The contents of this ontology are considered normative, however, and are provided in machine-readable form.

## 8.5 Ontology: ISO 639-2 Language Codes

This ontology represents the subset of the ISO 639 standard that provides the language names and actual codes for ISO 639-2, updated to reflect changes identified on the Library of Congress site as of the date of the version IRI.

**Table 8-5 ISO 639-2 Language Codes Ontology Metadata**

Metadata Term	Value
sm:filename	ISO639-2-LanguageCodes.rdf
sm:fileAbbreviation	lcc-639-2
OntologyIRI	<a href="http://www.omg.org/spec/LCC/Languages/ISO639-2-LanguageCodes/">http://www.omg.org/spec/LCC/Languages/ISO639-2-LanguageCodes/</a>
owl:versionIRI	<a href="http://www.omg.org/spec/LCC/20170801/Languages/ISO639-2-LanguageCodes/">http://www.omg.org/spec/LCC/20170801/Languages/ISO639-2-LanguageCodes/</a>

sm:dependsOn	<a href="http://www.omg.org/spec/LCC/Languages/LanguageRepresentation/">http://www.omg.org/spec/LCC/Languages/LanguageRepresentation/</a> <a href="http://www.omg.org/spec/LCC/Languages/ISO639-1-LanguageCodes/">http://www.omg.org/spec/LCC/Languages/ISO639-1-LanguageCodes/</a>
skos:changeNote	The <a href="http://www.omg.org/spec/LCC/20151101/Languages/ISO639-2-LanguageCodes.rdf">http://www.omg.org/spec/LCC/20151101/Languages/ISO639-2-LanguageCodes.rdf</a> version of this ontology has been revised to reflect the issues addressed by the LCC 1.0 FTF report. The codes themselves are current as of 31 July 2017, based on the US Library of Congress site.

Note that this ontology consists entirely of individuals representing the ISO 639-2 code set, language, and language codes, and therefore is not modeled herein. The contents of this ontology are considered normative, however, and are provided in machine-readable form.

## 9 Country Ontologies

### 9.1 Overview

This section defines the terms, definitions, relationships, and additional logic specified in the ontologies that make up the Countries Module.

### 9.2 Module: Countries

**Table 9-1 Countries Module Metadata**

Metadata Term	Value
sm:filename	AboutCountries.rdf
sm:fileAbbreviation	lcc-cty
OntologyIRI	<a href="http://www.omg.org/spec/LCC/Countries/AboutCountries/">http://www.omg.org/spec/LCC/Countries/AboutCountries/</a>
owl:versionIRI	<a href="http://www.omg.org/spec/LCC/20170801/Countries/AboutCountries/">http://www.omg.org/spec/LCC/20170801/Countries/AboutCountries/</a>
sm:moduleName	Countries
sm:moduleAbbreviation	LCC-CTY
sm:moduleVersion	1.0
sm:moduleAbstract	This module contains ontologies representing countries, territories, subdivisions, and other geopolitical entities commonly used in business, scientific, and government systems and applications. The main body of the module is designed to support ISO 3166 and the U.N. M49 region codes as normative a-box extensions, as well as the country element of the Language Tag specified in BCP 47 (RFC 4646, RFC 4647). It is intended to provide a systematic description of the vocabulary used for country representation in applications requiring geophysical and geopolitical concepts derived from, or in compliance with ISO 3166 and M49, including but not limited to web-based applications. It is also compatible with the GeoNames ontology, but represents only a subset of the content provided in GeoNames.

### 9.3 Ontology: Country Representation

The purpose of the Country Representation ontology, based on ISO 3166 and other representations of geographic regions and countries, such as the ISO Online Browsing Platform, UN M49 Region codes, SWIFT registry, UN FAO and CIA World Factbook, FIFA and International Olympics codes for countries, and GeoNames, is to provide a systematic description of the vocabulary used for country and geopolitical entity representation (based strictly on requirements for business applications, not broader geographic or political uses). A few additional properties to support geophysical coordinates, identified in the UN FAO and CIA World Factbook as well as from the well-known GeoNames ontology, have been added, but extensions to support other coding systems, such as the FAOSTAT code, have not been included.

ISO 3166 provides widely, though not universally, applicable coded representations of names of countries, dependencies, and other areas of particular geopolitical interest and their subdivisions, including:

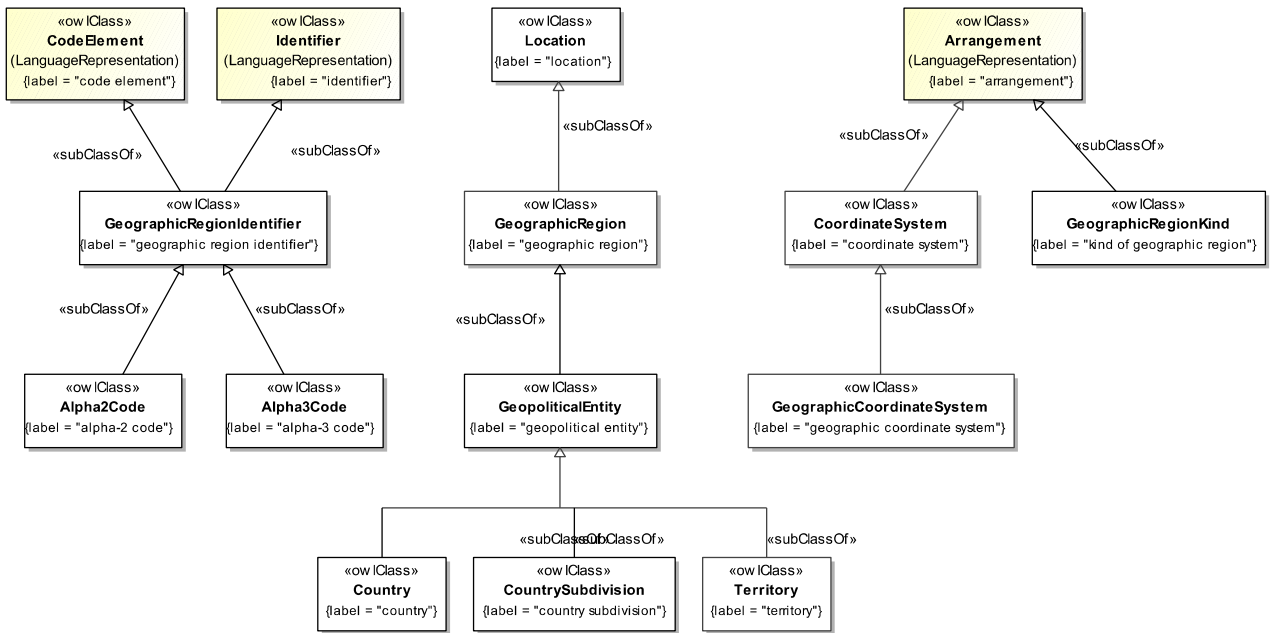


- ISO 3166-1 (Country codes) establishes codes that represent the current names of countries, dependencies, and other areas of particular geopolitical interest, on the basis of lists of country names obtained from the United Nations.
- ISO 3166-2 (Country subdivision code) establishes a code that represents the names of the principal administrative divisions, or similar areas, of the countries, etc. included in the ISO 3166-1.
- ISO 3166-3 (Code for formerly used names of countries) establishes a code that represents non-current country names, *i.e.*, the country names deleted from ISO 3166 since its first publication in 1974.
- The United Nations Standard Country or Area Codes for Statistical Use (M49), described at <https://unstats.un.org/unsd/methodology/m49/>, provides further regional classification for countries by continent, region within a continent, and sub-regions within regions that are widely used as well, and so this ontology is designed to support the M49 code set as well. M49 reuses the ISO 3166 codes for countries and some regions, and augments that with additional, broader regional codes.

This ontology provides a reference model to support the first two parts of ISO 3166, along with the other coding systems mentioned above.

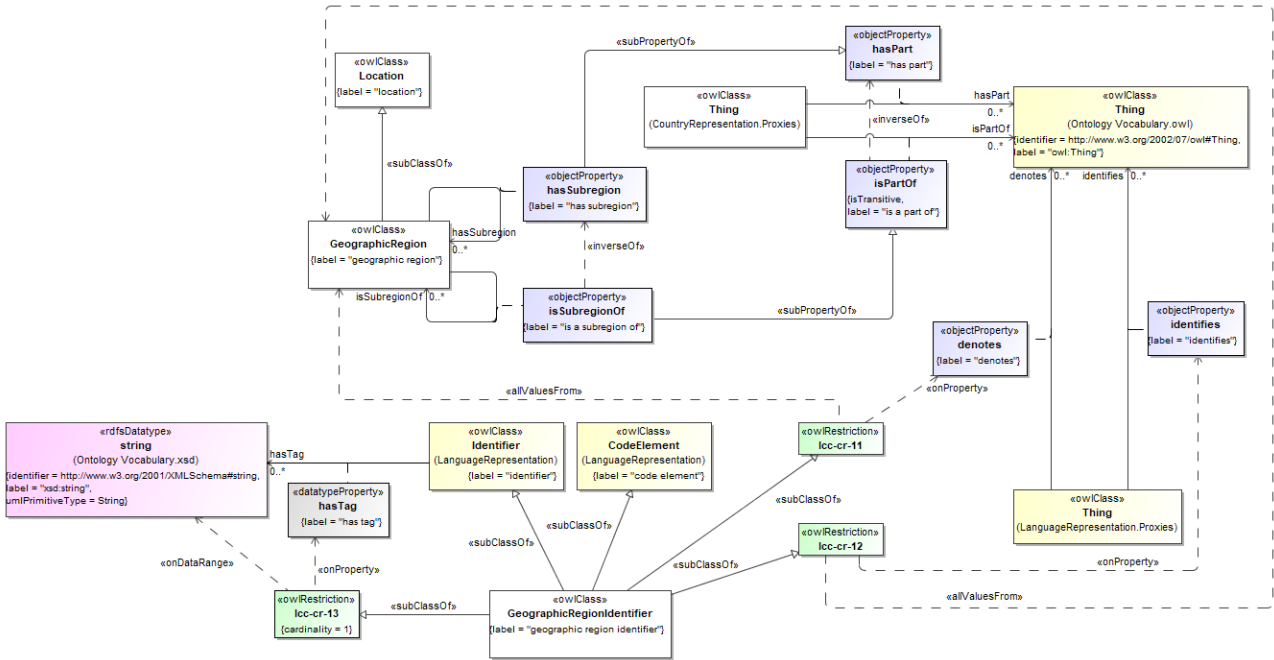
**Table 9-2 Country Representation Ontology Metadata**

Metadata Term	Value
sm:filename	CountryRepresentation.rdf
sm:fileAbbreviation	lcc-cr
OntologyIRI	<a href="http://www.omg.org/spec/LCC/Countries/CountryRepresentation/">http://www.omg.org/spec/LCC/Countries/CountryRepresentation/</a>
owl:versionIRI	<a href="http://www.omg.org/spec/LCC/20170801/Countries/CountryRepresentation/">http://www.omg.org/spec/LCC/20170801/Countries/CountryRepresentation/</a>
sm:relatedSpecification	<p>ISO 3166-1 Codes for the representation of names of countries and their subdivisions- Part 1: Country codes, Second edition, 2006-11-15</p> <p>ISO 3166-2 Codes for the representation of names of countries and their subdivisions- Part 2: Country subdivision code, First edition, 1998-12-15</p> <p>ISO 3166-3 Codes for the representation of names of countries and their subdivisions- Part 3: Code for formerly used names of countries, First edition, 1998-03-01</p>
sm:relatedSpecification	<p>Food and Agriculture Organization of the United Nations, see <a href="http://www.fao.org/countryprofiles/en/">http://www.fao.org/countryprofiles/en/</a></p> <p>Society for Worldwide Interbank Financial Telecommunication (SWIFT) Online Directories, see <a href="http://www.swift.com/bsl/index.faces">http://www.swift.com/bsl/index.faces</a></p> <p>CIA World Factbook, see <a href="https://www.cia.gov/library/publications/the-world-factbook/">https://www.cia.gov/library/publications/the-world-factbook/</a></p>
sm:dependsOn	<a href="http://www.omg.org/spec/LCC/Languages/LanguageRepresentation/">http://www.omg.org/spec/LCC/Languages/LanguageRepresentation/</a>



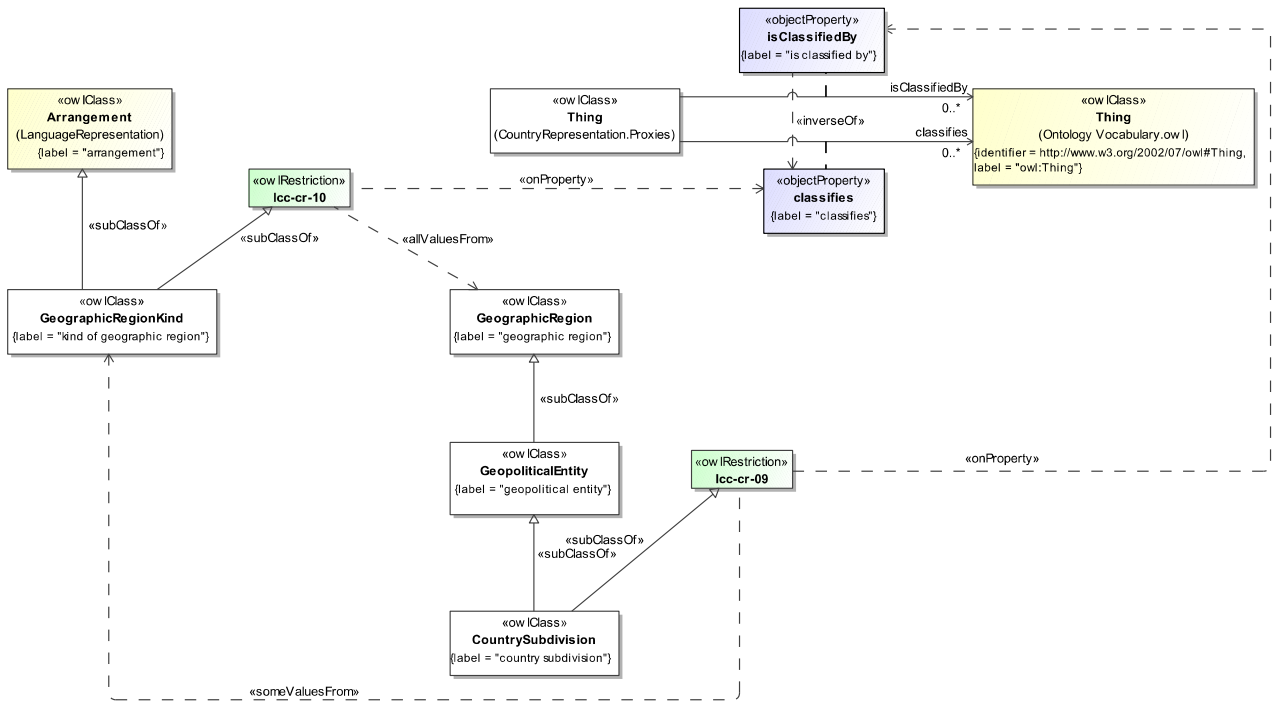
**Figure 9.1 Country Representation Class Hierarchy**

Figure 9.1 provides an overview of the concepts in the Country Representation ontology, including the primary inheritance relationships.



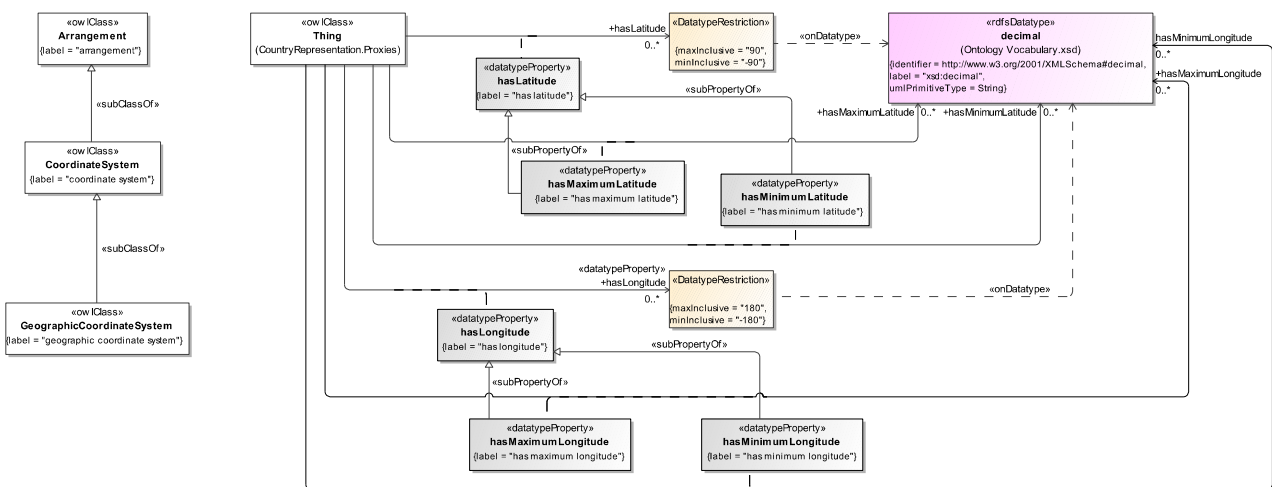
**Figure 9.2 Geographic Regions**

Figure 9.2 defines a geographic region as a location that may have sub-regions and may be identified by a geographic region identifier.



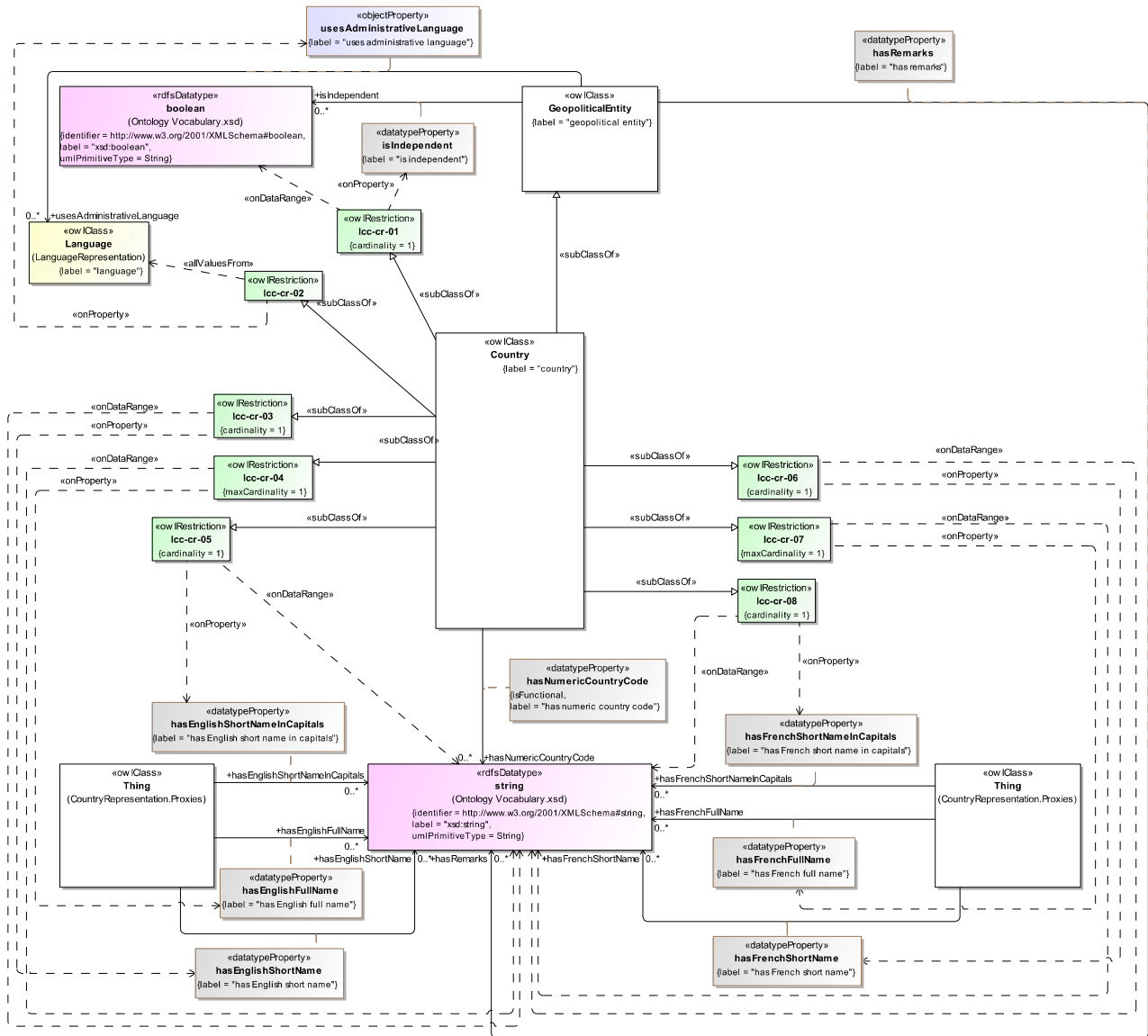
**Figure 9.3 Classifying Geographic Regions**

Figure 9.3 defines a geographic region kind as an arrangement that classifies geographic regions, and shows how, specifically, a country subdivision is classified by a geographic region kind (for example, as a province, state, district, territory, or other sub-region kind).



**Figure 9.4 Locations and Coordinates**

Figure 9.4 defines concepts relevant to geographic coordinate systems, including properties for representation of latitude and longitude for use in mapping to geographic region descriptions that include this information, such as the CIA World Factbook and Geonames.



**Figure 9.5 Definition of Country**

Figure 9.5 expands on the definition of a country, including constraints indicating that the some of the English and French names are required.

The detailed annotations and axioms that comprise the ontology are provided in Table 9-3, below.

**Table 9-3 Country Representation Ontology Details**

**Classes**

Name	Annotations	Class Expressions
<b>Alpha2Code</b> (alpha-2 code)	<u>Definition:</u> a digraph representing a country or geographic region	<u>Parent Class:</u> GeographicRegionIdentifier
<b>Alpha3Code</b> (alpha-3 code)	<u>Definition:</u> a trigraph representing a country or geographic region	<u>Parent Class:</u> GeographicRegionIdentifier_
<b>CoordinateSystem</b> (coordinate system)	<p><u>Definition:</u> a system that uses one or more numbers, or coordinates, to uniquely determine the position of a point or other geometric element on a planar or spherical surface</p> <p><u>Note:</u> Without a concise definition of the coordinate system used to represent a point, it is difficult to change to a new coordinate system. Changing coordinate systems is required when integrating data from different sources into a common coordinate system.</p> <p><u>Source:</u> <a href="http://edndoc.esri.com/arcscde/9.1/general_topics/what_coordinate_sys.htm">http://edndoc.esri.com/arcscde/9.1/general_topics/what_coordinate_sys.htm</a></p> <p><u>Source:</u> <a href="https://en.wikipedia.org/wiki/Coordinate_system">https://en.wikipedia.org/wiki/Coordinate_system</a></p>	<u>Parent Class:</u> Arrangement
<b>Country</b> (country)	<u>Definition:</u> a geopolitical entity representing a country or dependent territory	<p><u>Parent Class:</u> GeopoliticalEntity</p> <p><u>Property Restriction:</u> = 1 hasEnglishShortName.string (lcc-cr-03)</p> <p><u>Property Restriction:</u> ≤ 1 hasEnglishFullName.string (lcc-cr-04)</p> <p><u>Property Restriction:</u> = 1 hasEnglishShortNameInCapitals.string (lcc-cr-05)</p> <p><u>Property Restriction:</u> = 1 hasFrenchShortName.string (lcc-cr-06)</p> <p><u>Property Restriction:</u> ≤ 1 hasFrenchFullName.string (lcc-cr-07)</p> <p><u>Property Restriction:</u> = 1 hasFrenchShortNameInCapitals.string (lcc-cr-08)</p> <p><u>Property Restriction:</u> ∇ usesAdministrativeLanguage.Language (lcc-cr-02)</p> <p><u>Property Restriction:</u> = 1 isIndependent.boolean (lcc-cr-01)</p>
<b>CountrySubdivision</b> (country subdivision)	<u>Definition:</u> a geopolitical entity, typically a division of a country, dependency, or other area of special geopolitical interest related to a country or other geopolitical entity	<p><u>Parent Class:</u> GeopoliticalEntity</p> <p><u>Property Restriction:</u> ∃ isClassifiedBy.GeographicRegionKind (lcc-cr-09)</p>
<b>GeographicCoordinateSyst</b>	<u>Definition:</u> a three-dimensional reference system that	<u>Parent Class:</u> CoordinateSystem

<b>em</b> (geographic coordinate system)	<p>locates points on the Earth's surface</p> <p><u>Note:</u> The unit of measure is usually decimal degrees. A point has two coordinate values, latitude and longitude. Latitude and longitude measure angles.</p> <p><u>Example:</u> The three most widely used systems for indicating point locations in the United States are (1) latitude and longitude [and optionally elevation], (2) Universal Transverse Mercator (UTM) system, and (3) State Plane Coordinate Systems (SPCS).</p> <p><u>Source:</u>  <a href="http://edndoc.esri.com/arcscde/9.1/general_topics/what_coordinate_sys.htm">http://edndoc.esri.com/arcscde/9.1/general_topics/what_coordinate_sys.htm</a></p> <p><u>Source:</u>  <a href="https://pubs.usgs.gov/circ/1983/0878b/report.pdf">https://pubs.usgs.gov/circ/1983/0878b/report.pdf</a></p>	
<b>GeographicRegion</b> (geographic region)	<p><u>Definition:</u> an area, especially part of a country or the world having definable characteristics but not always fixed boundaries</p> <p><u>Source:</u>  <a href="https://en.oxforddictionaries.com/definition/region">https://en.oxforddictionaries.com/definition/region</a></p>	Parent Class: Location
<b>GeographicRegionIdentifier</b> (geographic region identifier)	<p><u>Definition:</u> a string of letters assigned to a country or other geographic region for the purpose of uniquely representing it</p>	Parent Class: CodeElement Parent Class: Identifier <u>Property Restriction:</u> √ denotes.GeographicRegion (lcc-cr-11) <u>Property Restriction:</u> √ identifies.GeographicRegion (lcc-cr-12)
<b>GeographicRegionKind</b> (geographic region kind)	<p><u>Definition:</u> a classification scheme for geographic regions, including but not limited to subdivisions of a geopolitical entity, as (noting that there may be more than one kind for a given country or other entity)</p>	Parent Class: Arrangement <u>Property Restriction:</u> √ classifies.GeographicRegion (lcc-cr-10)
<b>GeopoliticalEntity</b> (geopolitical entity)	<p><u>Definition:</u> any country, federal province, city or other administrative unit that represents a geophysical location and has some political identity</p>	Parent Class: GeographicRegion
<b>Location</b> (location)	<p><u>Definition:</u> a place or position in time and/or space, including a virtual place</p>	
<b>Territory</b> (territory)	<p><u>Definition:</u> a geopolitical entity, typically considered an area of special geopolitical interest, related to a country or other geopolitical entity</p> <p><u>Note:</u> Certain territories are included in the ISO 3166-2 code set without an alpha 2 or alpha 3 code. In these cases, the numeric code for the subregion may have more than 3 characters in their corresponding numeric region codes.</p>	Parent Class: GeopoliticalEntity

## Properties

Name	Annotations	Property Axioms
<b>classifies</b> (classifies)	<u>Definition:</u> arranges in categories	

	according to shared characteristics	
<b>hasPart</b> (has part)	<p><u>Definition:</u> indicates any portion of something, regardless of whether the portion itself is attached to the remainder or detached; cognitively salient or arbitrarily demarcated; self-connected or disconnected; homogeneous or gerrymandered; material or immaterial; extended or unextended; spatial or temporal</p> <p><u>Direct source:</u> <a href="http://plato.stanford.edu/entries/mereology/">Stanford Encyclopedia of Philosophy at http://plato.stanford.edu/entries/mereology/</a></p>	
<b>hasSubregion</b> (has subregion)	<p><u>Definition:</u> relates a geographic region to another geographic region that is a designated subregion of it</p>	<p><u>Parent Property:</u> hasPart</p> <p><u>Domain:</u> GeographicRegion</p> <p><u>Range:</u> GeographicRegion</p>
<b>isClassifiedBy</b> (is classified by)	<p><u>Definition:</u> indicates the classifier used to characterize something</p>	<p><u>Inverse:</u> classifies</p>
<b>isPartOf</b> (is a part of)	<p><u>Definition:</u> relates something to another thing that it is some component or portion of, regardless of how that whole-part relationship is manifested, i.e., attached to the remainder or detached; cognitively salient or arbitrarily demarcated; self-connected or disconnected; homogeneous or gerrymandered; material or immaterial; extended or unextended; spatial or temporal; the most generic part relation, reflexive, asymmetric, and transitive</p> <p><u>Direct source:</u> <a href="http://plato.stanford.edu/entries/mereology/">Stanford Encyclopedia of Philosophy at http://plato.stanford.edu/entries/mereology/</a></p>	<p><u>Property axiom:</u> Transitive</p> <p><u>Inverse:</u> hasPart</p>
<b>isSubregionOf</b> (is a subregion of)	<p><u>Definition:</u> relates a geographic region to another geographic region that it is a part of</p>	<p><u>Parent Property:</u> isPartOf</p> <p><u>Domain:</u> GeographicRegion</p> <p><u>Range:</u> GeographicRegion</p> <p><u>Inverse:</u> hasSubregion</p>
<b>isUsedBy</b> (is used by)	<p><u>Definition:</u> is employed by in the process of accomplishing something</p>	
<b>uses</b> (uses)	<p><u>Definition:</u> employs as a means of accomplishing some task or achieving some result</p>	<p><u>Inverse:</u> isUsedBy</p>
<b>usesAdministrativeLanguage</b> uses administrative language)	<p><u>Definition:</u> relates a country or geopolitical entity to the administrative language(s) that entity uses for international communications</p>	<p><u>Parent Property:</u> uses</p> <p><u>Domain:</u> Country</p> <p><u>Range:</u> Language</p>
<b>hasEnglishFullName</b> (has English full name)	<p><u>Definition:</u> the full name, if different from the short form of the country</p>	<p><u>Parent Property:</u> hasEnglishName</p>



	name, in lower case	<u>Range:</u> string
<b>hasEnglishShortName</b> (has English short name)	<u>Definition:</u> the short form of the country name, in English	<u>Parent Property:</u> hasEnglishName <u>Range:</u> string
<b>hasEnglishShortNameInCapitals</b> (has English short name in capitals)	<u>Definition:</u> the short form of the country name, in English (capitals)	<u>Parent Property:</u> hasEnglishName <u>Range:</u> string
<b>hasFrenchFullName</b> (has French full name)	<u>Definition:</u> the full name, if different from the short form of the country name, in lower case	<u>Parent Property:</u> hasFrenchName <u>Range:</u> string
<b>hasFrenchShortName</b> (has French short name)	<u>Definition:</u> the short form of the country name, in French	<u>Parent Property:</u> hasFrenchName <u>Range:</u> string
<b>hasFrenchShortNameInCapitals</b> (has French short name in capitals)	<u>Definition:</u> the short form of the country name, in French (capitals)	<u>Parent Property:</u> hasFrenchName <u>Range:</u> string
<b>hasLatitude</b> (has latitude)	<u>Definition:</u> the angle formed by the intersection of a line perpendicular to the Earth's surface at a point and the plane of the Equator  <u>Note:</u> Points north of the Equator have positive latitude values, while points south have negative values. Latitude values range from minus 90 to plus 90 degrees. Lines of latitude are also called parallels because a particular value of latitude forms a circle parallel to the Equator.  <u>Source:</u> <a href="http://edndoc.esri.com/arcscde/9.1/general_topics/what_coord_sys.htm">http://edndoc.esri.com/arcscde/9.1/general_topics/what_coord_sys.htm</a>	<u>Range:</u> xsd:decimal [ $\geq -90$ , $\leq 90$ ]
<b>hasLocalShortName</b> (has local short name)	<u>Definition:</u> the local, regional, cultural, or indigenous short form of the country name	<u>Parent Property:</u> hasName <u>Range:</u> string
<b>hasLongitude</b> (has longitude)	<u>Definition:</u> the angle between a plane that passes through the point and the North and South poles, and a reference plane  <u>Note:</u> The reference plane is known as the prime meridian. The most common prime meridian passes through Greenwich, United Kingdom. Other examples of prime meridians in use pass through Paris and Bogota. Longitude values range from minus 180 to plus 180 degrees.”  <u>Source:</u> <a href="http://edndoc.esri.com/arcscde/9.1/general_topics/what_coord_sys.htm">http://edndoc.esri.com/arcscde/9.1/general_topics/what_coord_sys.htm</a>	<u>Range:</u> xsd:decimal [ $\geq -180$ , $\leq 180$ ]
<b>hasMaximumLatitude</b> (has maximum latitude)	<u>Definition:</u> a maximum latitude with respect to a range	<u>Parent Property:</u> hasLatitude <u>Range:</u> xsd:decimal
<b>hasMaximumLongitude</b> (has maximum longitude)	<u>Definition:</u> a maximum longitude with respect to a range	<u>Parent Property:</u> hasLongitude

		<u>Range</u> : xsd:decimal
<b>hasMinimumLatitude</b> (has minimum latitude)	<u>Definition</u> : a minimum latitude with respect to a range	<u>Parent Property</u> : hasLatitude <u>Range</u> : xsd:decimal
<b>hasMinimumLongitude</b> (has minimum longitude)	<u>Definition</u> : a minimum longitude with respect to a range	<u>Parent Property</u> : hasLongitude <u>Range</u> : xsd:decimal
<b>hasNumericCountryRegionCode</b> (has numeric region code)	<u>Definition</u> : a three-digit numeric code assigned to a region according to some code set  <u>Note</u> : For certain territories that do not have an alternate designation ( <i>i.e.</i> country or country subdivision code in ISO 3166), the corresponding numeric code may have four digits.	<u>Range</u> : string
<b>hasRemarks</b> (has remarks)	<u>Definition</u> : remarks, such as other widely-used country names, names of geographically separated territories, and so forth	<u>Domain</u> : GeopoliticalEntity <u>Range</u> : string
<b>isIndependent</b> (is independent)	<u>Definition</u> : indicates whether a geopolitical entity stands alone or is part of another country from an international political perspective	<u>Domain</u> : GeopoliticalEntity <u>Range</u> : boolean

## 9.4 Ontology: ISO 3166-1 Country Codes

This ontology represents the subset of the ISO 3166 standard that include the actual ISO 3166-1 country codes, with the ontology and codes for the other parts of the standard represented in dependent models.

**Table 9-4 ISO 3166-1 Country Codes Ontology Metadata**

Metadata Term	Value
sm:filename	ISO3166-1-CountryCodes.rdf
sm:fileAbbreviation	lcc-3166-1
OntologyIRI	<a href="http://www.omg.org/spec/LCC/Countries/ISO3166-1-CountryCodes/">http://www.omg.org/spec/LCC/Countries/ISO3166-1-CountryCodes/</a>
owl:versionIRI	<a href="http://www.omg.org/spec/LCC/20170801/Countries/ISO3166-1-CountryCodes/">http://www.omg.org/spec/LCC/20170801/Countries/ISO3166-1-CountryCodes/</a>
sm:dependsOn	<a href="http://www.omg.org/spec/LCC/Languages/LanguageRepresentation/">http://www.omg.org/spec/LCC/Languages/LanguageRepresentation/</a> <a href="http://www.omg.org/spec/LCC/Languages/ISO639-1-LanguageCodes/">http://www.omg.org/spec/LCC/Languages/ISO639-1-LanguageCodes/</a> <a href="http://www.omg.org/spec/LCC/Countries/CountryRepresentation/">http://www.omg.org/spec/LCC/Countries/CountryRepresentation/</a>
skos:changeNote	The <a href="http://www.omg.org/spec/LCC/20151101/Countries/ISO3166-1-CountryCodes.rdf">http://www.omg.org/spec/LCC/20151101/Countries/ISO3166-1-CountryCodes.rdf</a> version of this ontology has been revised to reflect the issues addressed by the LCC 1.0 FTF report. The country codes and related metadata contained herein are current as of the July 2017 revision to the online code set.
dct:issues	2017-07-20T22:26:02.631805+02:00

Note that this ontology consists entirely of individuals representing the ISO 3166-1 code set, countries, and country codes, and therefore is not modeled herein. The contents of this ontology are considered normative, however, and are provided in machine-readable form.

## 9.5 Ontology: ISO 3166-2 Subdivision Codes

This ontology represents the subset of the ISO 3166 standard that include the actual ISO 3166-2 subdivision codes, with the ontology and codes for the other parts of the standard represented in models that this ontology depends on.

**Table 9-5 ISO 3166-2 Subdivision Codes Ontology Metadata**

Metadata Term	Value
sm:filename	ISO3166-2-SubdivisionCodes.rdf
sm:fileAbbreviation	lcc-3166-2
OntologyIRI	<a href="http://www.omg.org/spec/LCC/Countries/ISO3166-2-SubdivisionCodes/">http://www.omg.org/spec/LCC/Countries/ISO3166-2-SubdivisionCodes/</a>
owl:versionIRI	<a href="http://www.omg.org/spec/LCC/20170801/Countries/ISO3166-2-SubdivisionCodes/">http://www.omg.org/spec/LCC/20170801/Countries/ISO3166-2-SubdivisionCodes/</a>
sm:dependsOn	<a href="http://www.omg.org/spec/LCC/Languages/LanguageRepresentation/">http://www.omg.org/spec/LCC/Languages/LanguageRepresentation/</a> <a href="http://www.omg.org/spec/LCC/Languages/ISO639-1-LanguageCodes/">http://www.omg.org/spec/LCC/Languages/ISO639-1-LanguageCodes/</a> <a href="http://www.omg.org/spec/LCC/Countries/CountryRepresentation/">http://www.omg.org/spec/LCC/Countries/CountryRepresentation/</a> <a href="http://www.omg.org/spec/LCC/Countries/ISO3166-1-CountryCodes/">http://www.omg.org/spec/LCC/Countries/ISO3166-1-CountryCodes/</a>
skos:changeNote	The <a href="http://www.omg.org/spec/LCC/20151101/Countries/ISO3166-2-SubdivisionCodes.rdf">http://www.omg.org/spec/LCC/20151101/Countries/ISO3166-2-SubdivisionCodes.rdf</a> version of this ontology has been revised to reflect the issues addressed by the LCC 1.0 FTF report. The subdivision codes and related metadata contained herein are current as of the July 2017 revision to the online code set.

Note that the basic ISO 3166-2 ontology defines common code-related individuals only, and does not include any regional content. Regional content is included, by country, in the Regions sub-module. This module includes one ontology per country that submitted region codes to the United Nations / ISO in the latest release of the codes. See Table 7.2 for the structure of the URIs corresponding to the regional code ontologies and Annex B for a complete list of the namespaces and corresponding countries for which region codes are available.

## 9.6 Ontology: Standard Country or Area Codes for Statistical Use (M49)

This ontology represents the United Nations publication 'Standard Country or Area Codes for Statistical Use' originally published as Series M, No. 49 and now commonly referred to as the M49 standard. The assignment of countries or areas to specific groupings is for statistical convenience and does not imply any assumption regarding political or other affiliation of countries or territories by the United Nations. The codes included herein are current as of the version IRI for this ontology.

**Table 9-6 M49 Region Codes Ontology Metadata**

Metadata Term	Value
sm:filename	UN-M49-RegionCodes.rdf
sm:fileAbbreviation	lcc-m49

OntologyIRI	<a href="http://www.omg.org/spec/LCC/Countries/UN-M49-RegionCodes/">http://www.omg.org/spec/LCC/Countries/UN-M49-RegionCodes/</a>
owl:versionIRI	<a href="http://www.omg.org/spec/LCC/20170801/Countries/UN-M49-RegionCodes/">http://www.omg.org/spec/LCC/20170801/Countries/UN-M49-RegionCodes/</a>
sm:dependsOn	<a href="http://www.omg.org/spec/LCC/Languages/LanguageRepresentation/">http://www.omg.org/spec/LCC/Languages/LanguageRepresentation/</a> <a href="http://www.omg.org/spec/LCC/Countries/CountryRepresentation/">http://www.omg.org/spec/LCC/Countries/CountryRepresentation/</a> <a href="http://www.omg.org/spec/LCC/Countries/ISO3166-1-CountryCodes/">http://www.omg.org/spec/LCC/Countries/ISO3166-1-CountryCodes/</a>

Note that this ontology consists entirely of individuals representing the UN M49 region code set, and therefore is not modeled herein. The contents of this ontology are considered normative, however, and are provided in machine-readable form.

This page intentionally left blank.

# Annex A: Deliverables

## (normative)

The LCC ontologies are delivered as (1) RDF/XML serialized OWL (normative and definitive), (2) UML XMI, serialized from UML with the ODM profiles for RDF and OWL applied (normative), (3) ODM XMI, serialized based on the ODM MOF metamodels for RDF and OWL (normative), and (4) Visual Ontology Modeler (VOM) model files, based on the VOM plug-in to MagicDraw (ancillary). If there are differences between the OWL files, ODM XMI, and UML XMI, the OWL files take precedence, followed by the UML XMI, and finally the ODM XMI.

Regardless of their form, each of the ontologies included in Languages, Countries and Codes (LCC) makes normative reference to the DCMI Dublin Core Metadata Terms<sup>5</sup>, W3C Simple Knowledge Organization System (SKOS) Recommendation<sup>6</sup>, and the OMG Architecture Board's Specification Metadata Recommendation<sup>7</sup>, which are not part of this specification.

The individual RDF/XML files are organized by module (directory), and within a given module, alphabetically by name, as shown in the URI structure for each individual OWL file. These files are UTF-8 conformant XML Schema files that are also OWL 2 compliant, and may be examined using any text editor, XML editor, or RDF or OWL editor. They have been verified for syntactic correctness via the W3C RDF Validator and University of Manchester OWL 2 Validator. They have also been checked for logical consistency using the Pellet OWL 2 reasoner from Stardog Union (formerly Complexible, and prior to that, Clark & Parsia) as well as the HermiT OWL 2 reasoner from Oxford University. It is anticipated that the OWL ontologies will be dereference-able, together with technical documentation (HTML) from the OMG site.

---

<sup>5</sup> <http://www.dublincore.org/documents/dcmi-terms/>

<sup>6</sup> <http://www.w3.org/TR/2009/REC-skos-reference-20090818/>

<sup>7</sup> <http://www.omg.org/techprocess/ab/SpecificationMetadata/>

This page intentionally left blank.

# Annex B: ISO 3166-2 Regions

## (normative)

This Annex lists the machine-readable files for country subdivisions, which are a normative part of the Languages, Countries, and Codes (LCC) specification. There is one file for each country that has subdivisions or territories as defined by ISO 3166. As stated in clause 9.5, these files are all in a module (subdirectory) called Regions, and are named according to the 2 character ISO-3166 code for the country. The files are automatically generated from the ISO 3166 XML file according to the algorithm described in Annex C.

Table B-1 lists the ontologies that contain the subdivision codes that comprise the ISO 3166-2 code set, by country, including their namespace prefix, country name, and canonical namespace.

**Table B-1 ISO 3166-2 Country Subdivision Ontologies**

Namespace Prefix	Country	Namespace
lcc-3166-2-ad	Andorra	<a href="http://www.omg.org/spec/LCC/Countries/Regions/ISO3166-2-SubdivisionCodes-AD/">http://www.omg.org/spec/LCC/Countries/Regions/ISO3166-2-SubdivisionCodes-AD/</a>
lcc-3166-2-ae	United Arab Emirates	<a href="http://www.omg.org/spec/LCC/Countries/Regions/ISO3166-2-SubdivisionCodes-AE/">http://www.omg.org/spec/LCC/Countries/Regions/ISO3166-2-SubdivisionCodes-AE/</a>
lcc-3166-2-af	Afghanistan	<a href="http://www.omg.org/spec/LCC/Countries/Regions/ISO3166-2-SubdivisionCodes-AF/">http://www.omg.org/spec/LCC/Countries/Regions/ISO3166-2-SubdivisionCodes-AF/</a>
lcc-3166-2-ag	Antigua and Barbuda	<a href="http://www.omg.org/spec/LCC/Countries/Regions/ISO3166-2-SubdivisionCodes-AG/">http://www.omg.org/spec/LCC/Countries/Regions/ISO3166-2-SubdivisionCodes-AG/</a>
lcc-3166-2-al	Albania	<a href="http://www.omg.org/spec/LCC/Countries/Regions/ISO3166-2-SubdivisionCodes-AL/">http://www.omg.org/spec/LCC/Countries/Regions/ISO3166-2-SubdivisionCodes-AL/</a>
lcc-3166-2-am	Armenia	<a href="http://www.omg.org/spec/LCC/Countries/Regions/ISO3166-2-SubdivisionCodes-AM/">http://www.omg.org/spec/LCC/Countries/Regions/ISO3166-2-SubdivisionCodes-AM/</a>
lcc-3166-2-ao	Angola	<a href="http://www.omg.org/spec/LCC/Countries/Regions/ISO3166-2-SubdivisionCodes-AO/">http://www.omg.org/spec/LCC/Countries/Regions/ISO3166-2-SubdivisionCodes-AO/</a>
lcc-3166-2-ar	Argentina	<a href="http://www.omg.org/spec/LCC/Countries/Regions/ISO3166-2-SubdivisionCodes-AR/">http://www.omg.org/spec/LCC/Countries/Regions/ISO3166-2-SubdivisionCodes-AR/</a>
lcc-3166-2-as	American Samoa	<a href="http://www.omg.org/spec/LCC/Countries/Regions/ISO3166-2-SubdivisionCodes-AS/">http://www.omg.org/spec/LCC/Countries/Regions/ISO3166-2-SubdivisionCodes-AS/</a>
lcc-3166-2-at	Austria	<a href="http://www.omg.org/spec/LCC/Countries/Regions/ISO3166-2-SubdivisionCodes-AT/">http://www.omg.org/spec/LCC/Countries/Regions/ISO3166-2-SubdivisionCodes-AT/</a>
lcc-3166-2-au	Australia	<a href="http://www.omg.org/spec/LCC/Countries/Regions/ISO3166-2-SubdivisionCodes-AU/">http://www.omg.org/spec/LCC/Countries/Regions/ISO3166-2-SubdivisionCodes-AU/</a>
lcc-3166-2-az	Azerbaijan	<a href="http://www.omg.org/spec/LCC/Countries/Regions/ISO3166-2-SubdivisionCodes-AZ/">http://www.omg.org/spec/LCC/Countries/Regions/ISO3166-2-SubdivisionCodes-AZ/</a>
lcc-3166-2-ba	Bosnia and Herzegovina	<a href="http://www.omg.org/spec/LCC/Countries/Regions/ISO3166-2-SubdivisionCodes-BA/">http://www.omg.org/spec/LCC/Countries/Regions/ISO3166-2-SubdivisionCodes-BA/</a>
lcc-3166-2-bb	Barbados	<a href="http://www.omg.org/spec/LCC/Countries/Regions/ISO3166-2-SubdivisionCodes-BB/">http://www.omg.org/spec/LCC/Countries/Regions/ISO3166-2-SubdivisionCodes-BB/</a>
lcc-3166-2-bd	Bangladesh	<a href="http://www.omg.org/spec/LCC/Countries/Regions/ISO3166-2-SubdivisionCodes-BD/">http://www.omg.org/spec/LCC/Countries/Regions/ISO3166-2-SubdivisionCodes-BD/</a>



lcc-3166-2- be	Belgium	<a href="http://www.omg.org/spec/LCC/Countries/Regions/ISO3166-2-SubdivisionCodes-BE/">http://www.omg.org/spec/LCC/Countries/Regions/ISO3166-2-SubdivisionCodes-BE/</a>
lcc-3166-2- bf	Burkina Faso	<a href="http://www.omg.org/spec/LCC/Countries/Regions/ISO3166-2-SubdivisionCodes-BF/">http://www.omg.org/spec/LCC/Countries/Regions/ISO3166-2-SubdivisionCodes-BF/</a>
lcc-3166-2- bg	Bulgaria	<a href="http://www.omg.org/spec/LCC/Countries/Regions/ISO3166-2-SubdivisionCodes-BG/">http://www.omg.org/spec/LCC/Countries/Regions/ISO3166-2-SubdivisionCodes-BG/</a>
lcc-3166-2- bh	Bahrain	<a href="http://www.omg.org/spec/LCC/Countries/Regions/ISO3166-2-SubdivisionCodes-BH/">http://www.omg.org/spec/LCC/Countries/Regions/ISO3166-2-SubdivisionCodes-BH/</a>
lcc-3166-2- bi	Burundi	<a href="http://www.omg.org/spec/LCC/Countries/Regions/ISO3166-2-SubdivisionCodes-BI/">http://www.omg.org/spec/LCC/Countries/Regions/ISO3166-2-SubdivisionCodes-BI/</a>
lcc-3166-2- bj	Benin	<a href="http://www.omg.org/spec/LCC/Countries/Regions/ISO3166-2-SubdivisionCodes-BJ/">http://www.omg.org/spec/LCC/Countries/Regions/ISO3166-2-SubdivisionCodes-BJ/</a>
lcc-3166-2- bn	Brunei Darussalam	<a href="http://www.omg.org/spec/LCC/Countries/Regions/ISO3166-2-SubdivisionCodes-BN/">http://www.omg.org/spec/LCC/Countries/Regions/ISO3166-2-SubdivisionCodes-BN/</a>
lcc-3166-2- bo	Bolivia	<a href="http://www.omg.org/spec/LCC/Countries/Regions/ISO3166-2-SubdivisionCodes-BO/">http://www.omg.org/spec/LCC/Countries/Regions/ISO3166-2-SubdivisionCodes-BO/</a>
lcc-3166-2- bq	Bonaire, Sint Eustatius and Saba	<a href="http://www.omg.org/spec/LCC/Countries/Regions/ISO3166-2-SubdivisionCodes-BQ/">http://www.omg.org/spec/LCC/Countries/Regions/ISO3166-2-SubdivisionCodes-BQ/</a>
lcc-3166-2- br	Brazil	<a href="http://www.omg.org/spec/LCC/Countries/Regions/ISO3166-2-SubdivisionCodes-BR/">http://www.omg.org/spec/LCC/Countries/Regions/ISO3166-2-SubdivisionCodes-BR/</a>
lcc-3166-2- bs	Bahamas	<a href="http://www.omg.org/spec/LCC/Countries/Regions/ISO3166-2-SubdivisionCodes-BS/">http://www.omg.org/spec/LCC/Countries/Regions/ISO3166-2-SubdivisionCodes-BS/</a>
lcc-3166-2- bt	Bhutan	<a href="http://www.omg.org/spec/LCC/Countries/Regions/ISO3166-2-SubdivisionCodes-BT/">http://www.omg.org/spec/LCC/Countries/Regions/ISO3166-2-SubdivisionCodes-BT/</a>
lcc-3166-2- bw	Botswana	<a href="http://www.omg.org/spec/LCC/Countries/Regions/ISO3166-2-SubdivisionCodes-BW/">http://www.omg.org/spec/LCC/Countries/Regions/ISO3166-2-SubdivisionCodes-BW/</a>
lcc-3166-2- by	Belarus	<a href="http://www.omg.org/spec/LCC/Countries/Regions/ISO3166-2-SubdivisionCodes-BY/">http://www.omg.org/spec/LCC/Countries/Regions/ISO3166-2-SubdivisionCodes-BY/</a>
lcc-3166-2- bz	Belize	<a href="http://www.omg.org/spec/LCC/Countries/Regions/ISO3166-2-SubdivisionCodes-BZ/">http://www.omg.org/spec/LCC/Countries/Regions/ISO3166-2-SubdivisionCodes-BZ/</a>
lcc-3166-2- ca	Canada	<a href="http://www.omg.org/spec/LCC/Countries/Regions/ISO3166-2-SubdivisionCodes-CA/">http://www.omg.org/spec/LCC/Countries/Regions/ISO3166-2-SubdivisionCodes-CA/</a>
lcc-3166-2- cd	Congo, Democratic Republic Of	<a href="http://www.omg.org/spec/LCC/Countries/Regions/ISO3166-2-SubdivisionCodes-CD/">http://www.omg.org/spec/LCC/Countries/Regions/ISO3166-2-SubdivisionCodes-CD/</a>
lcc-3166-2- cf	Central African Republic	<a href="http://www.omg.org/spec/LCC/Countries/Regions/ISO3166-2-SubdivisionCodes-CF/">http://www.omg.org/spec/LCC/Countries/Regions/ISO3166-2-SubdivisionCodes-CF/</a>
lcc-3166-2- cg	Congo	<a href="http://www.omg.org/spec/LCC/Countries/Regions/ISO3166-2-SubdivisionCodes-CG/">http://www.omg.org/spec/LCC/Countries/Regions/ISO3166-2-SubdivisionCodes-CG/</a>
lcc-3166-2- ch	Switzerland	<a href="http://www.omg.org/spec/LCC/Countries/Regions/ISO3166-2-SubdivisionCodes-CH/">http://www.omg.org/spec/LCC/Countries/Regions/ISO3166-2-SubdivisionCodes-CH/</a>
lcc-3166-2- ci	Côte d'Ivoire	<a href="http://www.omg.org/spec/LCC/Countries/Regions/ISO3166-2-SubdivisionCodes-CI/">http://www.omg.org/spec/LCC/Countries/Regions/ISO3166-2-SubdivisionCodes-CI/</a>
lcc-3166-2- ck	Cook Islands	<a href="http://www.omg.org/spec/LCC/Countries/Regions/ISO3166-2-SubdivisionCodes-CK/">http://www.omg.org/spec/LCC/Countries/Regions/ISO3166-2-SubdivisionCodes-CK/</a>
lcc-3166-2- cl	Chile	<a href="http://www.omg.org/spec/LCC/Countries/Regions/ISO3166-2-SubdivisionCodes-CL/">http://www.omg.org/spec/LCC/Countries/Regions/ISO3166-2-SubdivisionCodes-CL/</a>
lcc-3166-2- cm	Cameroon	<a href="http://www.omg.org/spec/LCC/Countries/Regions/ISO3166-2-SubdivisionCodes-CM/">http://www.omg.org/spec/LCC/Countries/Regions/ISO3166-2-SubdivisionCodes-CM/</a>

lcc-3166-2- cn	China	<a href="http://www.omg.org/spec/LCC/Countries/Regions/ISO3166-2-SubdivisionCodes-CN/">http://www.omg.org/spec/LCC/Countries/Regions/ISO3166-2-SubdivisionCodes-CN/</a>
lcc-3166-2- co	Colombia	<a href="http://www.omg.org/spec/LCC/Countries/Regions/ISO3166-2-SubdivisionCodes-CO/">http://www.omg.org/spec/LCC/Countries/Regions/ISO3166-2-SubdivisionCodes-CO/</a>
lcc-3166-2- cr	Costa Rica	<a href="http://www.omg.org/spec/LCC/Countries/Regions/ISO3166-2-SubdivisionCodes-CR/">http://www.omg.org/spec/LCC/Countries/Regions/ISO3166-2-SubdivisionCodes-CR/</a>
lcc-3166-2- cu	Cuba	<a href="http://www.omg.org/spec/LCC/Countries/Regions/ISO3166-2-SubdivisionCodes-CU/">http://www.omg.org/spec/LCC/Countries/Regions/ISO3166-2-SubdivisionCodes-CU/</a>
lcc-3166-2- cv	Cabo Verde	<a href="http://www.omg.org/spec/LCC/Countries/Regions/ISO3166-2-SubdivisionCodes-CV/">http://www.omg.org/spec/LCC/Countries/Regions/ISO3166-2-SubdivisionCodes-CV/</a>
lcc-3166-2- cy	Cyprus	<a href="http://www.omg.org/spec/LCC/Countries/Regions/ISO3166-2-SubdivisionCodes-CY/">http://www.omg.org/spec/LCC/Countries/Regions/ISO3166-2-SubdivisionCodes-CY/</a>
lcc-3166-2- cz	Czechia	<a href="http://www.omg.org/spec/LCC/Countries/Regions/ISO3166-2-SubdivisionCodes-CZ/">http://www.omg.org/spec/LCC/Countries/Regions/ISO3166-2-SubdivisionCodes-CZ/</a>
lcc-3166-2- de	Germany	<a href="http://www.omg.org/spec/LCC/Countries/Regions/ISO3166-2-SubdivisionCodes-DE/">http://www.omg.org/spec/LCC/Countries/Regions/ISO3166-2-SubdivisionCodes-DE/</a>
lcc-3166-2- dj	Djibouti	<a href="http://www.omg.org/spec/LCC/Countries/Regions/ISO3166-2-SubdivisionCodes-DJ/">http://www.omg.org/spec/LCC/Countries/Regions/ISO3166-2-SubdivisionCodes-DJ/</a>
lcc-3166-2- dk	Denmark	<a href="http://www.omg.org/spec/LCC/Countries/Regions/ISO3166-2-SubdivisionCodes-DK/">http://www.omg.org/spec/LCC/Countries/Regions/ISO3166-2-SubdivisionCodes-DK/</a>
lcc-3166-2- dm	Dominica	<a href="http://www.omg.org/spec/LCC/Countries/Regions/ISO3166-2-SubdivisionCodes-DM/">http://www.omg.org/spec/LCC/Countries/Regions/ISO3166-2-SubdivisionCodes-DM/</a>
lcc-3166-2- do	Dominican Republic	<a href="http://www.omg.org/spec/LCC/Countries/Regions/ISO3166-2-SubdivisionCodes-DO/">http://www.omg.org/spec/LCC/Countries/Regions/ISO3166-2-SubdivisionCodes-DO/</a>
lcc-3166-2- dz	Algeria	<a href="http://www.omg.org/spec/LCC/Countries/Regions/ISO3166-2-SubdivisionCodes-DZ/">http://www.omg.org/spec/LCC/Countries/Regions/ISO3166-2-SubdivisionCodes-DZ/</a>
lcc-3166-2- ec	Ecuador	<a href="http://www.omg.org/spec/LCC/Countries/Regions/ISO3166-2-SubdivisionCodes-EC/">http://www.omg.org/spec/LCC/Countries/Regions/ISO3166-2-SubdivisionCodes-EC/</a>
lcc-3166-2- ee	Estonia	<a href="http://www.omg.org/spec/LCC/Countries/Regions/ISO3166-2-SubdivisionCodes-EE/">http://www.omg.org/spec/LCC/Countries/Regions/ISO3166-2-SubdivisionCodes-EE/</a>
lcc-3166-2- eg	Egypt	<a href="http://www.omg.org/spec/LCC/Countries/Regions/ISO3166-2-SubdivisionCodes-EG/">http://www.omg.org/spec/LCC/Countries/Regions/ISO3166-2-SubdivisionCodes-EG/</a>
lcc-3166-2- er	Eritrea	<a href="http://www.omg.org/spec/LCC/Countries/Regions/ISO3166-2-SubdivisionCodes-ER/">http://www.omg.org/spec/LCC/Countries/Regions/ISO3166-2-SubdivisionCodes-ER/</a>
lcc-3166-2- es	Spain	<a href="http://www.omg.org/spec/LCC/Countries/Regions/ISO3166-2-SubdivisionCodes-ES/">http://www.omg.org/spec/LCC/Countries/Regions/ISO3166-2-SubdivisionCodes-ES/</a>
lcc-3166-2- et	Ethiopia	<a href="http://www.omg.org/spec/LCC/Countries/Regions/ISO3166-2-SubdivisionCodes-ET/">http://www.omg.org/spec/LCC/Countries/Regions/ISO3166-2-SubdivisionCodes-ET/</a>
lcc-3166-2- fi	Finland	<a href="http://www.omg.org/spec/LCC/Countries/Regions/ISO3166-2-SubdivisionCodes-FI/">http://www.omg.org/spec/LCC/Countries/Regions/ISO3166-2-SubdivisionCodes-FI/</a>
lcc-3166-2- fj	Fiji	<a href="http://www.omg.org/spec/LCC/Countries/Regions/ISO3166-2-SubdivisionCodes-FJ/">http://www.omg.org/spec/LCC/Countries/Regions/ISO3166-2-SubdivisionCodes-FJ/</a>
lcc-3166-2- fm	Micronesia	<a href="http://www.omg.org/spec/LCC/Countries/Regions/ISO3166-2-SubdivisionCodes-FM/">http://www.omg.org/spec/LCC/Countries/Regions/ISO3166-2-SubdivisionCodes-FM/</a>
lcc-3166-2- fr	France	<a href="http://www.omg.org/spec/LCC/Countries/Regions/ISO3166-2-SubdivisionCodes-FR/">http://www.omg.org/spec/LCC/Countries/Regions/ISO3166-2-SubdivisionCodes-FR/</a>
lcc-3166-2- ga	Gabon	<a href="http://www.omg.org/spec/LCC/Countries/Regions/ISO3166-2-SubdivisionCodes-GA/">http://www.omg.org/spec/LCC/Countries/Regions/ISO3166-2-SubdivisionCodes-GA/</a>
lcc-3166-2- gb	United Kingdom of Great Britain and Northern	<a href="http://www.omg.org/spec/LCC/Countries/Regions/ISO3166-2-SubdivisionCodes-GB/">http://www.omg.org/spec/LCC/Countries/Regions/ISO3166-2-SubdivisionCodes-GB/</a>

	Ireland	<a href="http://www.omg.org/spec/LCC/Countries/Regions/ISO3166-2-SubdivisionCodes-GB/">SubdivisionCodes-GB/</a>
lcc-3166-2- gd	Grenada	<a href="http://www.omg.org/spec/LCC/Countries/Regions/ISO3166-2-SubdivisionCodes-GD/">http://www.omg.org/spec/LCC/Countries/Regions/ISO3166-2-SubdivisionCodes-GD/</a>
lcc-3166-2- ge	Georgia	<a href="http://www.omg.org/spec/LCC/Countries/Regions/ISO3166-2-SubdivisionCodes-GE/">http://www.omg.org/spec/LCC/Countries/Regions/ISO3166-2-SubdivisionCodes-GE/</a>
lcc-3166-2- gg	Guernsey	<a href="http://www.omg.org/spec/LCC/Countries/Regions/ISO3166-2-SubdivisionCodes-GG/">http://www.omg.org/spec/LCC/Countries/Regions/ISO3166-2-SubdivisionCodes-GG/</a>
lcc-3166-2- gh	Ghana	<a href="http://www.omg.org/spec/LCC/Countries/Regions/ISO3166-2-SubdivisionCodes-GH/">http://www.omg.org/spec/LCC/Countries/Regions/ISO3166-2-SubdivisionCodes-GH/</a>
lcc-3166-2- gl	Greenland	<a href="http://www.omg.org/spec/LCC/Countries/Regions/ISO3166-2-SubdivisionCodes-GL/">http://www.omg.org/spec/LCC/Countries/Regions/ISO3166-2-SubdivisionCodes-GL/</a>
lcc-3166-2- gm	Gambia	<a href="http://www.omg.org/spec/LCC/Countries/Regions/ISO3166-2-SubdivisionCodes-GM/">http://www.omg.org/spec/LCC/Countries/Regions/ISO3166-2-SubdivisionCodes-GM/</a>
lcc-3166-2- gn	Guinea	<a href="http://www.omg.org/spec/LCC/Countries/Regions/ISO3166-2-SubdivisionCodes-GN/">http://www.omg.org/spec/LCC/Countries/Regions/ISO3166-2-SubdivisionCodes-GN/</a>
lcc-3166-2- gp	Guadeloupe	<a href="http://www.omg.org/spec/LCC/Countries/Regions/ISO3166-2-SubdivisionCodes-GP/">http://www.omg.org/spec/LCC/Countries/Regions/ISO3166-2-SubdivisionCodes-GP/</a>
lcc-3166-2- gq	Equatorial Guinea	<a href="http://www.omg.org/spec/LCC/Countries/Regions/ISO3166-2-SubdivisionCodes-GQ/">http://www.omg.org/spec/LCC/Countries/Regions/ISO3166-2-SubdivisionCodes-GQ/</a>
lcc-3166-2- gr	Greece	<a href="http://www.omg.org/spec/LCC/Countries/Regions/ISO3166-2-SubdivisionCodes-GR/">http://www.omg.org/spec/LCC/Countries/Regions/ISO3166-2-SubdivisionCodes-GR/</a>
lcc-3166-2- gs	South Georgia and the South Sandwich Islands	<a href="http://www.omg.org/spec/LCC/Countries/Regions/ISO3166-2-SubdivisionCodes-GS/">http://www.omg.org/spec/LCC/Countries/Regions/ISO3166-2-SubdivisionCodes-GS/</a>
lcc-3166-2- gt	Guatemala	<a href="http://www.omg.org/spec/LCC/Countries/Regions/ISO3166-2-SubdivisionCodes-GT/">http://www.omg.org/spec/LCC/Countries/Regions/ISO3166-2-SubdivisionCodes-GT/</a>
lcc-3166-2- gw	Guinea-Bissau	<a href="http://www.omg.org/spec/LCC/Countries/Regions/ISO3166-2-SubdivisionCodes-GW/">http://www.omg.org/spec/LCC/Countries/Regions/ISO3166-2-SubdivisionCodes-GW/</a>
lcc-3166-2- gy	Guyana	<a href="http://www.omg.org/spec/LCC/Countries/Regions/ISO3166-2-SubdivisionCodes-GY/">http://www.omg.org/spec/LCC/Countries/Regions/ISO3166-2-SubdivisionCodes-GY/</a>
lcc-3166-2- hm	Heard Island and McDonald Islands	<a href="http://www.omg.org/spec/LCC/Countries/Regions/ISO3166-2-SubdivisionCodes-HM/">http://www.omg.org/spec/LCC/Countries/Regions/ISO3166-2-SubdivisionCodes-HM/</a>
lcc-3166-2- hn	Honduras	<a href="http://www.omg.org/spec/LCC/Countries/Regions/ISO3166-2-SubdivisionCodes-HN/">http://www.omg.org/spec/LCC/Countries/Regions/ISO3166-2-SubdivisionCodes-HN/</a>
lcc-3166-2- hr	Croatia	<a href="http://www.omg.org/spec/LCC/Countries/Regions/ISO3166-2-SubdivisionCodes-HR/">http://www.omg.org/spec/LCC/Countries/Regions/ISO3166-2-SubdivisionCodes-HR/</a>
lcc-3166-2- ht	Haiti	<a href="http://www.omg.org/spec/LCC/Countries/Regions/ISO3166-2-SubdivisionCodes-HT/">http://www.omg.org/spec/LCC/Countries/Regions/ISO3166-2-SubdivisionCodes-HT/</a>
lcc-3166-2- hu	Hungary	<a href="http://www.omg.org/spec/LCC/Countries/Regions/ISO3166-2-SubdivisionCodes-HU/">http://www.omg.org/spec/LCC/Countries/Regions/ISO3166-2-SubdivisionCodes-HU/</a>
lcc-3166-2- id	Indonesia	<a href="http://www.omg.org/spec/LCC/Countries/Regions/ISO3166-2-SubdivisionCodes-ID/">http://www.omg.org/spec/LCC/Countries/Regions/ISO3166-2-SubdivisionCodes-ID/</a>
lcc-3166-2- ie	Ireland	<a href="http://www.omg.org/spec/LCC/Countries/Regions/ISO3166-2-SubdivisionCodes-IE/">http://www.omg.org/spec/LCC/Countries/Regions/ISO3166-2-SubdivisionCodes-IE/</a>
lcc-3166-2- il	Israel	<a href="http://www.omg.org/spec/LCC/Countries/Regions/ISO3166-2-SubdivisionCodes-IL/">http://www.omg.org/spec/LCC/Countries/Regions/ISO3166-2-SubdivisionCodes-IL/</a>
lcc-3166-2- in	India	<a href="http://www.omg.org/spec/LCC/Countries/Regions/ISO3166-2-SubdivisionCodes-IN/">http://www.omg.org/spec/LCC/Countries/Regions/ISO3166-2-SubdivisionCodes-IN/</a>
lcc-3166-2- io	British Indian Ocean Territory	<a href="http://www.omg.org/spec/LCC/Countries/Regions/ISO3166-2-SubdivisionCodes-IO/">http://www.omg.org/spec/LCC/Countries/Regions/ISO3166-2-SubdivisionCodes-IO/</a>

lcc-3166-2- iq	Iraq	<a href="http://www.omg.org/spec/LCC/Countries/Regions/ISO3166-2-SubdivisionCodes-IQ/">http://www.omg.org/spec/LCC/Countries/Regions/ISO3166-2-SubdivisionCodes-IQ/</a>
lcc-3166-2- ir	Iran	<a href="http://www.omg.org/spec/LCC/Countries/Regions/ISO3166-2-SubdivisionCodes-IR/">http://www.omg.org/spec/LCC/Countries/Regions/ISO3166-2-SubdivisionCodes-IR/</a>
lcc-3166-2- is	Iceland	<a href="http://www.omg.org/spec/LCC/Countries/Regions/ISO3166-2-SubdivisionCodes-IS/">http://www.omg.org/spec/LCC/Countries/Regions/ISO3166-2-SubdivisionCodes-IS/</a>
lcc-3166-2- it	Italy	<a href="http://www.omg.org/spec/LCC/Countries/Regions/ISO3166-2-SubdivisionCodes-IT/">http://www.omg.org/spec/LCC/Countries/Regions/ISO3166-2-SubdivisionCodes-IT/</a>
lcc-3166-2- jm	Jamaica	<a href="http://www.omg.org/spec/LCC/Countries/Regions/ISO3166-2-SubdivisionCodes-JM/">http://www.omg.org/spec/LCC/Countries/Regions/ISO3166-2-SubdivisionCodes-JM/</a>
lcc-3166-2- jo	Jordan	<a href="http://www.omg.org/spec/LCC/Countries/Regions/ISO3166-2-SubdivisionCodes-JO/">http://www.omg.org/spec/LCC/Countries/Regions/ISO3166-2-SubdivisionCodes-JO/</a>
lcc-3166-2- jp	Japan	<a href="http://www.omg.org/spec/LCC/Countries/Regions/ISO3166-2-SubdivisionCodes-JP/">http://www.omg.org/spec/LCC/Countries/Regions/ISO3166-2-SubdivisionCodes-JP/</a>
lcc-3166-2- ke	Kenya	<a href="http://www.omg.org/spec/LCC/Countries/Regions/ISO3166-2-SubdivisionCodes-KE/">http://www.omg.org/spec/LCC/Countries/Regions/ISO3166-2-SubdivisionCodes-KE/</a>
lcc-3166-2- kg	Kyrgyzstan	<a href="http://www.omg.org/spec/LCC/Countries/Regions/ISO3166-2-SubdivisionCodes-KG/">http://www.omg.org/spec/LCC/Countries/Regions/ISO3166-2-SubdivisionCodes-KG/</a>
lcc-3166-2- kh	Cambodia	<a href="http://www.omg.org/spec/LCC/Countries/Regions/ISO3166-2-SubdivisionCodes-KH/">http://www.omg.org/spec/LCC/Countries/Regions/ISO3166-2-SubdivisionCodes-KH/</a>
lcc-3166-2- ki	Kiribati	<a href="http://www.omg.org/spec/LCC/Countries/Regions/ISO3166-2-SubdivisionCodes-KI/">http://www.omg.org/spec/LCC/Countries/Regions/ISO3166-2-SubdivisionCodes-KI/</a>
lcc-3166-2- km	Comoros	<a href="http://www.omg.org/spec/LCC/Countries/Regions/ISO3166-2-SubdivisionCodes-KM/">http://www.omg.org/spec/LCC/Countries/Regions/ISO3166-2-SubdivisionCodes-KM/</a>
lcc-3166-2- kn	Saint Kitts and Nevis	<a href="http://www.omg.org/spec/LCC/Countries/Regions/ISO3166-2-SubdivisionCodes-KN/">http://www.omg.org/spec/LCC/Countries/Regions/ISO3166-2-SubdivisionCodes-KN/</a>
lcc-3166-2- kp	Korea, Democratic Peoples Republic Of	<a href="http://www.omg.org/spec/LCC/Countries/Regions/ISO3166-2-SubdivisionCodes-KP/">http://www.omg.org/spec/LCC/Countries/Regions/ISO3166-2-SubdivisionCodes-KP/</a>
lcc-3166-2- kr	Korea, Republic Of	<a href="http://www.omg.org/spec/LCC/Countries/Regions/ISO3166-2-SubdivisionCodes-KR/">http://www.omg.org/spec/LCC/Countries/Regions/ISO3166-2-SubdivisionCodes-KR/</a>
lcc-3166-2- kw	Kuwait	<a href="http://www.omg.org/spec/LCC/Countries/Regions/ISO3166-2-SubdivisionCodes-KW/">http://www.omg.org/spec/LCC/Countries/Regions/ISO3166-2-SubdivisionCodes-KW/</a>
lcc-3166-2- ky	Cayman Islands	<a href="http://www.omg.org/spec/LCC/Countries/Regions/ISO3166-2-SubdivisionCodes-KY/">http://www.omg.org/spec/LCC/Countries/Regions/ISO3166-2-SubdivisionCodes-KY/</a>
lcc-3166-2- kz	Kazakhstan	<a href="http://www.omg.org/spec/LCC/Countries/Regions/ISO3166-2-SubdivisionCodes-KZ/">http://www.omg.org/spec/LCC/Countries/Regions/ISO3166-2-SubdivisionCodes-KZ/</a>
lcc-3166-2- la	Lao People's Democratic Republic	<a href="http://www.omg.org/spec/LCC/Countries/Regions/ISO3166-2-SubdivisionCodes-LA/">http://www.omg.org/spec/LCC/Countries/Regions/ISO3166-2-SubdivisionCodes-LA/</a>
lcc-3166-2- lb	Lebanon	<a href="http://www.omg.org/spec/LCC/Countries/Regions/ISO3166-2-SubdivisionCodes-LB/">http://www.omg.org/spec/LCC/Countries/Regions/ISO3166-2-SubdivisionCodes-LB/</a>
lcc-3166-2- lc	Saint Lucia	<a href="http://www.omg.org/spec/LCC/Countries/Regions/ISO3166-2-SubdivisionCodes-LC/">http://www.omg.org/spec/LCC/Countries/Regions/ISO3166-2-SubdivisionCodes-LC/</a>
lcc-3166-2- li	Liechtenstein	<a href="http://www.omg.org/spec/LCC/Countries/Regions/ISO3166-2-SubdivisionCodes-LI/">http://www.omg.org/spec/LCC/Countries/Regions/ISO3166-2-SubdivisionCodes-LI/</a>
lcc-3166-2- lk	Sri Lanka	<a href="http://www.omg.org/spec/LCC/Countries/Regions/ISO3166-2-SubdivisionCodes-LK/">http://www.omg.org/spec/LCC/Countries/Regions/ISO3166-2-SubdivisionCodes-LK/</a>
lcc-3166-2- lr	Liberia	<a href="http://www.omg.org/spec/LCC/Countries/Regions/ISO3166-2-SubdivisionCodes-LR/">http://www.omg.org/spec/LCC/Countries/Regions/ISO3166-2-SubdivisionCodes-LR/</a>

lcc-3166-2- ls	Lesotho	<a href="http://www.omg.org/spec/LCC/Countries/Regions/ISO3166-2-SubdivisionCodes-LS/">http://www.omg.org/spec/LCC/Countries/Regions/ISO3166-2-SubdivisionCodes-LS/</a>
lcc-3166-2- lt	Lithuania	<a href="http://www.omg.org/spec/LCC/Countries/Regions/ISO3166-2-SubdivisionCodes-LT/">http://www.omg.org/spec/LCC/Countries/Regions/ISO3166-2-SubdivisionCodes-LT/</a>
lcc-3166-2- lu	Luxembourg	<a href="http://www.omg.org/spec/LCC/Countries/Regions/ISO3166-2-SubdivisionCodes-LU/">http://www.omg.org/spec/LCC/Countries/Regions/ISO3166-2-SubdivisionCodes-LU/</a>
lcc-3166-2- lv	Latvia	<a href="http://www.omg.org/spec/LCC/Countries/Regions/ISO3166-2-SubdivisionCodes-LV/">http://www.omg.org/spec/LCC/Countries/Regions/ISO3166-2-SubdivisionCodes-LV/</a>
lcc-3166-2- ly	Libya	<a href="http://www.omg.org/spec/LCC/Countries/Regions/ISO3166-2-SubdivisionCodes-LY/">http://www.omg.org/spec/LCC/Countries/Regions/ISO3166-2-SubdivisionCodes-LY/</a>
lcc-3166-2- ma	Morocco	<a href="http://www.omg.org/spec/LCC/Countries/Regions/ISO3166-2-SubdivisionCodes-MA/">http://www.omg.org/spec/LCC/Countries/Regions/ISO3166-2-SubdivisionCodes-MA/</a>
lcc-3166-2- mc	Monaco	<a href="http://www.omg.org/spec/LCC/Countries/Regions/ISO3166-2-SubdivisionCodes-MC/">http://www.omg.org/spec/LCC/Countries/Regions/ISO3166-2-SubdivisionCodes-MC/</a>
lcc-3166-2- md	Moldova	<a href="http://www.omg.org/spec/LCC/Countries/Regions/ISO3166-2-SubdivisionCodes-MD/">http://www.omg.org/spec/LCC/Countries/Regions/ISO3166-2-SubdivisionCodes-MD/</a>
lcc-3166-2- me	Montenegro	<a href="http://www.omg.org/spec/LCC/Countries/Regions/ISO3166-2-SubdivisionCodes-ME/">http://www.omg.org/spec/LCC/Countries/Regions/ISO3166-2-SubdivisionCodes-ME/</a>
lcc-3166-2- mf	Saint Martin	<a href="http://www.omg.org/spec/LCC/Countries/Regions/ISO3166-2-SubdivisionCodes-MF/">http://www.omg.org/spec/LCC/Countries/Regions/ISO3166-2-SubdivisionCodes-MF/</a>
lcc-3166-2- mg	Madagascar	<a href="http://www.omg.org/spec/LCC/Countries/Regions/ISO3166-2-SubdivisionCodes-MG/">http://www.omg.org/spec/LCC/Countries/Regions/ISO3166-2-SubdivisionCodes-MG/</a>
lcc-3166-2- mh	Marshall Islands	<a href="http://www.omg.org/spec/LCC/Countries/Regions/ISO3166-2-SubdivisionCodes-MH/">http://www.omg.org/spec/LCC/Countries/Regions/ISO3166-2-SubdivisionCodes-MH/</a>
lcc-3166-2- mk	Macedonia	<a href="http://www.omg.org/spec/LCC/Countries/Regions/ISO3166-2-SubdivisionCodes-MK/">http://www.omg.org/spec/LCC/Countries/Regions/ISO3166-2-SubdivisionCodes-MK/</a>
lcc-3166-2- ml	Mali	<a href="http://www.omg.org/spec/LCC/Countries/Regions/ISO3166-2-SubdivisionCodes-ML/">http://www.omg.org/spec/LCC/Countries/Regions/ISO3166-2-SubdivisionCodes-ML/</a>
lcc-3166-2- mm	Myanmar	<a href="http://www.omg.org/spec/LCC/Countries/Regions/ISO3166-2-SubdivisionCodes-MM/">http://www.omg.org/spec/LCC/Countries/Regions/ISO3166-2-SubdivisionCodes-MM/</a>
lcc-3166-2- mn	Mongolia	<a href="http://www.omg.org/spec/LCC/Countries/Regions/ISO3166-2-SubdivisionCodes-MN/">http://www.omg.org/spec/LCC/Countries/Regions/ISO3166-2-SubdivisionCodes-MN/</a>
lcc-3166-2- mp	Northern Mariana Islands	<a href="http://www.omg.org/spec/LCC/Countries/Regions/ISO3166-2-SubdivisionCodes-MP/">http://www.omg.org/spec/LCC/Countries/Regions/ISO3166-2-SubdivisionCodes-MP/</a>
lcc-3166-2- mr	Mauritania	<a href="http://www.omg.org/spec/LCC/Countries/Regions/ISO3166-2-SubdivisionCodes-MR/">http://www.omg.org/spec/LCC/Countries/Regions/ISO3166-2-SubdivisionCodes-MR/</a>
lcc-3166-2- mt	Malta	<a href="http://www.omg.org/spec/LCC/Countries/Regions/ISO3166-2-SubdivisionCodes-MT/">http://www.omg.org/spec/LCC/Countries/Regions/ISO3166-2-SubdivisionCodes-MT/</a>
lcc-3166-2- mu	Mauritius	<a href="http://www.omg.org/spec/LCC/Countries/Regions/ISO3166-2-SubdivisionCodes-MU/">http://www.omg.org/spec/LCC/Countries/Regions/ISO3166-2-SubdivisionCodes-MU/</a>
lcc-3166-2- mv	Maldives	<a href="http://www.omg.org/spec/LCC/Countries/Regions/ISO3166-2-SubdivisionCodes-MV/">http://www.omg.org/spec/LCC/Countries/Regions/ISO3166-2-SubdivisionCodes-MV/</a>
lcc-3166-2- mw	Malawi	<a href="http://www.omg.org/spec/LCC/Countries/Regions/ISO3166-2-SubdivisionCodes-MW/">http://www.omg.org/spec/LCC/Countries/Regions/ISO3166-2-SubdivisionCodes-MW/</a>
lcc-3166-2- mx	Mexico	<a href="http://www.omg.org/spec/LCC/Countries/Regions/ISO3166-2-SubdivisionCodes-MX/">http://www.omg.org/spec/LCC/Countries/Regions/ISO3166-2-SubdivisionCodes-MX/</a>
lcc-3166-2- my	Malaysia	<a href="http://www.omg.org/spec/LCC/Countries/Regions/ISO3166-2-SubdivisionCodes-MY/">http://www.omg.org/spec/LCC/Countries/Regions/ISO3166-2-SubdivisionCodes-MY/</a>

lcc-3166-2- mz	Mozambique	<a href="http://www.omg.org/spec/LCC/Countries/Regions/ISO3166-2-SubdivisionCodes-MZ/">http://www.omg.org/spec/LCC/Countries/Regions/ISO3166-2-SubdivisionCodes-MZ/</a>
lcc-3166-2- na	Namibia	<a href="http://www.omg.org/spec/LCC/Countries/Regions/ISO3166-2-SubdivisionCodes-NA/">http://www.omg.org/spec/LCC/Countries/Regions/ISO3166-2-SubdivisionCodes-NA/</a>
lcc-3166-2- nc	New Caledonia	<a href="http://www.omg.org/spec/LCC/Countries/Regions/ISO3166-2-SubdivisionCodes-NC/">http://www.omg.org/spec/LCC/Countries/Regions/ISO3166-2-SubdivisionCodes-NC/</a>
lcc-3166-2- ne	Niger	<a href="http://www.omg.org/spec/LCC/Countries/Regions/ISO3166-2-SubdivisionCodes-NE/">http://www.omg.org/spec/LCC/Countries/Regions/ISO3166-2-SubdivisionCodes-NE/</a>
lcc-3166-2- ng	Nigeria	<a href="http://www.omg.org/spec/LCC/Countries/Regions/ISO3166-2-SubdivisionCodes-NG/">http://www.omg.org/spec/LCC/Countries/Regions/ISO3166-2-SubdivisionCodes-NG/</a>
lcc-3166-2- ni	Nicaragua	<a href="http://www.omg.org/spec/LCC/Countries/Regions/ISO3166-2-SubdivisionCodes-NI/">http://www.omg.org/spec/LCC/Countries/Regions/ISO3166-2-SubdivisionCodes-NI/</a>
lcc-3166-2- nl	Netherlands	<a href="http://www.omg.org/spec/LCC/Countries/Regions/ISO3166-2-SubdivisionCodes-NL/">http://www.omg.org/spec/LCC/Countries/Regions/ISO3166-2-SubdivisionCodes-NL/</a>
lcc-3166-2- no	Norway	<a href="http://www.omg.org/spec/LCC/Countries/Regions/ISO3166-2-SubdivisionCodes-NO/">http://www.omg.org/spec/LCC/Countries/Regions/ISO3166-2-SubdivisionCodes-NO/</a>
lcc-3166-2- np	Nepal	<a href="http://www.omg.org/spec/LCC/Countries/Regions/ISO3166-2-SubdivisionCodes-NP/">http://www.omg.org/spec/LCC/Countries/Regions/ISO3166-2-SubdivisionCodes-NP/</a>
lcc-3166-2- nr	Nauru	<a href="http://www.omg.org/spec/LCC/Countries/Regions/ISO3166-2-SubdivisionCodes-NR/">http://www.omg.org/spec/LCC/Countries/Regions/ISO3166-2-SubdivisionCodes-NR/</a>
lcc-3166-2- nz	New Zealand	<a href="http://www.omg.org/spec/LCC/Countries/Regions/ISO3166-2-SubdivisionCodes-NZ/">http://www.omg.org/spec/LCC/Countries/Regions/ISO3166-2-SubdivisionCodes-NZ/</a>
lcc-3166-2- om	Oman	<a href="http://www.omg.org/spec/LCC/Countries/Regions/ISO3166-2-SubdivisionCodes-OM/">http://www.omg.org/spec/LCC/Countries/Regions/ISO3166-2-SubdivisionCodes-OM/</a>
lcc-3166-2- pa	Panama	<a href="http://www.omg.org/spec/LCC/Countries/Regions/ISO3166-2-SubdivisionCodes-PA/">http://www.omg.org/spec/LCC/Countries/Regions/ISO3166-2-SubdivisionCodes-PA/</a>
lcc-3166-2- pe	Peru	<a href="http://www.omg.org/spec/LCC/Countries/Regions/ISO3166-2-SubdivisionCodes-PE/">http://www.omg.org/spec/LCC/Countries/Regions/ISO3166-2-SubdivisionCodes-PE/</a>
lcc-3166-2- pf	French Polynesia	<a href="http://www.omg.org/spec/LCC/Countries/Regions/ISO3166-2-SubdivisionCodes-PF/">http://www.omg.org/spec/LCC/Countries/Regions/ISO3166-2-SubdivisionCodes-PF/</a>
lcc-3166-2- pg	Papua New Guinea	<a href="http://www.omg.org/spec/LCC/Countries/Regions/ISO3166-2-SubdivisionCodes-PG/">http://www.omg.org/spec/LCC/Countries/Regions/ISO3166-2-SubdivisionCodes-PG/</a>
lcc-3166-2- ph	Philippines	<a href="http://www.omg.org/spec/LCC/Countries/Regions/ISO3166-2-SubdivisionCodes-PH/">http://www.omg.org/spec/LCC/Countries/Regions/ISO3166-2-SubdivisionCodes-PH/</a>
lcc-3166-2- pk	Pakistan	<a href="http://www.omg.org/spec/LCC/Countries/Regions/ISO3166-2-SubdivisionCodes-PK/">http://www.omg.org/spec/LCC/Countries/Regions/ISO3166-2-SubdivisionCodes-PK/</a>
lcc-3166-2- pl	Poland	<a href="http://www.omg.org/spec/LCC/Countries/Regions/ISO3166-2-SubdivisionCodes-PL/">http://www.omg.org/spec/LCC/Countries/Regions/ISO3166-2-SubdivisionCodes-PL/</a>
lcc-3166-2- pm	Saint Pierre and Miquelon	<a href="http://www.omg.org/spec/LCC/Countries/Regions/ISO3166-2-SubdivisionCodes-PM/">http://www.omg.org/spec/LCC/Countries/Regions/ISO3166-2-SubdivisionCodes-PM/</a>
lcc-3166-2- pn	Pitcairn	<a href="http://www.omg.org/spec/LCC/Countries/Regions/ISO3166-2-SubdivisionCodes-PN/">http://www.omg.org/spec/LCC/Countries/Regions/ISO3166-2-SubdivisionCodes-PN/</a>
lcc-3166-2- ps	Palestine	<a href="http://www.omg.org/spec/LCC/Countries/Regions/ISO3166-2-SubdivisionCodes-PS/">http://www.omg.org/spec/LCC/Countries/Regions/ISO3166-2-SubdivisionCodes-PS/</a>
lcc-3166-2- pt	Portugal	<a href="http://www.omg.org/spec/LCC/Countries/Regions/ISO3166-2-SubdivisionCodes-PT/">http://www.omg.org/spec/LCC/Countries/Regions/ISO3166-2-SubdivisionCodes-PT/</a>
lcc-3166-2- pw	Palau	<a href="http://www.omg.org/spec/LCC/Countries/Regions/ISO3166-2-SubdivisionCodes-PW/">http://www.omg.org/spec/LCC/Countries/Regions/ISO3166-2-SubdivisionCodes-PW/</a>

lcc-3166-2- py	Paraguay	<a href="http://www.omg.org/spec/LCC/Countries/Regions/ISO3166-2-SubdivisionCodes-PY/">http://www.omg.org/spec/LCC/Countries/Regions/ISO3166-2-SubdivisionCodes-PY/</a>
lcc-3166-2- qa	Qatar	<a href="http://www.omg.org/spec/LCC/Countries/Regions/ISO3166-2-SubdivisionCodes-QA/">http://www.omg.org/spec/LCC/Countries/Regions/ISO3166-2-SubdivisionCodes-QA/</a>
lcc-3166-2- ro	Romania	<a href="http://www.omg.org/spec/LCC/Countries/Regions/ISO3166-2-SubdivisionCodes-RO/">http://www.omg.org/spec/LCC/Countries/Regions/ISO3166-2-SubdivisionCodes-RO/</a>
lcc-3166-2- rs	Serbia	<a href="http://www.omg.org/spec/LCC/Countries/Regions/ISO3166-2-SubdivisionCodes-RS/">http://www.omg.org/spec/LCC/Countries/Regions/ISO3166-2-SubdivisionCodes-RS/</a>
lcc-3166-2- ru	Russian Federation	<a href="http://www.omg.org/spec/LCC/Countries/Regions/ISO3166-2-SubdivisionCodes-RU/">http://www.omg.org/spec/LCC/Countries/Regions/ISO3166-2-SubdivisionCodes-RU/</a>
lcc-3166-2- rw	Rwanda	<a href="http://www.omg.org/spec/LCC/Countries/Regions/ISO3166-2-SubdivisionCodes-RW/">http://www.omg.org/spec/LCC/Countries/Regions/ISO3166-2-SubdivisionCodes-RW/</a>
lcc-3166-2- sa	Saudi Arabia	<a href="http://www.omg.org/spec/LCC/Countries/Regions/ISO3166-2-SubdivisionCodes-SA/">http://www.omg.org/spec/LCC/Countries/Regions/ISO3166-2-SubdivisionCodes-SA/</a>
lcc-3166-2- sb	Solomon Islands	<a href="http://www.omg.org/spec/LCC/Countries/Regions/ISO3166-2-SubdivisionCodes-SB/">http://www.omg.org/spec/LCC/Countries/Regions/ISO3166-2-SubdivisionCodes-SB/</a>
lcc-3166-2- sc	Seychelles	<a href="http://www.omg.org/spec/LCC/Countries/Regions/ISO3166-2-SubdivisionCodes-SC/">http://www.omg.org/spec/LCC/Countries/Regions/ISO3166-2-SubdivisionCodes-SC/</a>
lcc-3166-2- sd	Sudan	<a href="http://www.omg.org/spec/LCC/Countries/Regions/ISO3166-2-SubdivisionCodes-SD/">http://www.omg.org/spec/LCC/Countries/Regions/ISO3166-2-SubdivisionCodes-SD/</a>
lcc-3166-2- se	Sweden	<a href="http://www.omg.org/spec/LCC/Countries/Regions/ISO3166-2-SubdivisionCodes-SE/">http://www.omg.org/spec/LCC/Countries/Regions/ISO3166-2-SubdivisionCodes-SE/</a>
lcc-3166-2- sg	Singapore	<a href="http://www.omg.org/spec/LCC/Countries/Regions/ISO3166-2-SubdivisionCodes-SG/">http://www.omg.org/spec/LCC/Countries/Regions/ISO3166-2-SubdivisionCodes-SG/</a>
lcc-3166-2- sh	Saint Helena, Ascension and Tristan da Cunha	<a href="http://www.omg.org/spec/LCC/Countries/Regions/ISO3166-2-SubdivisionCodes-SH/">http://www.omg.org/spec/LCC/Countries/Regions/ISO3166-2-SubdivisionCodes-SH/</a>
lcc-3166-2- si	Slovenia	<a href="http://www.omg.org/spec/LCC/Countries/Regions/ISO3166-2-SubdivisionCodes-SI/">http://www.omg.org/spec/LCC/Countries/Regions/ISO3166-2-SubdivisionCodes-SI/</a>
lcc-3166-2- sj	Svalbard and Jan Mayen	<a href="http://www.omg.org/spec/LCC/Countries/Regions/ISO3166-2-SubdivisionCodes-SJ/">http://www.omg.org/spec/LCC/Countries/Regions/ISO3166-2-SubdivisionCodes-SJ/</a>
lcc-3166-2- sk	Slovakia	<a href="http://www.omg.org/spec/LCC/Countries/Regions/ISO3166-2-SubdivisionCodes-SK/">http://www.omg.org/spec/LCC/Countries/Regions/ISO3166-2-SubdivisionCodes-SK/</a>
lcc-3166-2- sl	Sierra Leone	<a href="http://www.omg.org/spec/LCC/Countries/Regions/ISO3166-2-SubdivisionCodes-SL/">http://www.omg.org/spec/LCC/Countries/Regions/ISO3166-2-SubdivisionCodes-SL/</a>
lcc-3166-2- sm	San Marino	<a href="http://www.omg.org/spec/LCC/Countries/Regions/ISO3166-2-SubdivisionCodes-SM/">http://www.omg.org/spec/LCC/Countries/Regions/ISO3166-2-SubdivisionCodes-SM/</a>
lcc-3166-2- sn	Senegal	<a href="http://www.omg.org/spec/LCC/Countries/Regions/ISO3166-2-SubdivisionCodes-SN/">http://www.omg.org/spec/LCC/Countries/Regions/ISO3166-2-SubdivisionCodes-SN/</a>
lcc-3166-2- so	Somalia	<a href="http://www.omg.org/spec/LCC/Countries/Regions/ISO3166-2-SubdivisionCodes-SO/">http://www.omg.org/spec/LCC/Countries/Regions/ISO3166-2-SubdivisionCodes-SO/</a>
lcc-3166-2- sr	Suriname	<a href="http://www.omg.org/spec/LCC/Countries/Regions/ISO3166-2-SubdivisionCodes-SR/">http://www.omg.org/spec/LCC/Countries/Regions/ISO3166-2-SubdivisionCodes-SR/</a>
lcc-3166-2- ss	South Sudan	<a href="http://www.omg.org/spec/LCC/Countries/Regions/ISO3166-2-SubdivisionCodes-SS/">http://www.omg.org/spec/LCC/Countries/Regions/ISO3166-2-SubdivisionCodes-SS/</a>
lcc-3166-2- st	Sao Tome and Principe	<a href="http://www.omg.org/spec/LCC/Countries/Regions/ISO3166-2-SubdivisionCodes-ST/">http://www.omg.org/spec/LCC/Countries/Regions/ISO3166-2-SubdivisionCodes-ST/</a>
lcc-3166-2- sv	El Salvador	<a href="http://www.omg.org/spec/LCC/Countries/Regions/ISO3166-2-SubdivisionCodes-SV/">http://www.omg.org/spec/LCC/Countries/Regions/ISO3166-2-SubdivisionCodes-SV/</a>

lcc-3166-2- sy	Syrian Arab Republic	<a href="http://www.omg.org/spec/LCC/Countries/Regions/ISO3166-2-SubdivisionCodes-SY/">http://www.omg.org/spec/LCC/Countries/Regions/ISO3166-2-SubdivisionCodes-SY/</a>
lcc-3166-2- sz	Swaziland	<a href="http://www.omg.org/spec/LCC/Countries/Regions/ISO3166-2-SubdivisionCodes-SZ/">http://www.omg.org/spec/LCC/Countries/Regions/ISO3166-2-SubdivisionCodes-SZ/</a>
lcc-3166-2- tc	Turks and Caicos Islands	<a href="http://www.omg.org/spec/LCC/Countries/Regions/ISO3166-2-SubdivisionCodes-TC/">http://www.omg.org/spec/LCC/Countries/Regions/ISO3166-2-SubdivisionCodes-TC/</a>
lcc-3166-2- td	Chad	<a href="http://www.omg.org/spec/LCC/Countries/Regions/ISO3166-2-SubdivisionCodes-TD/">http://www.omg.org/spec/LCC/Countries/Regions/ISO3166-2-SubdivisionCodes-TD/</a>
lcc-3166-2- tf	French Southern Territories	<a href="http://www.omg.org/spec/LCC/Countries/Regions/ISO3166-2-SubdivisionCodes-TF/">http://www.omg.org/spec/LCC/Countries/Regions/ISO3166-2-SubdivisionCodes-TF/</a>
lcc-3166-2- tg	Togo	<a href="http://www.omg.org/spec/LCC/Countries/Regions/ISO3166-2-SubdivisionCodes-TG/">http://www.omg.org/spec/LCC/Countries/Regions/ISO3166-2-SubdivisionCodes-TG/</a>
lcc-3166-2- th	Thailand	<a href="http://www.omg.org/spec/LCC/Countries/Regions/ISO3166-2-SubdivisionCodes-TH/">http://www.omg.org/spec/LCC/Countries/Regions/ISO3166-2-SubdivisionCodes-TH/</a>
lcc-3166-2- tj	Tajikistan	<a href="http://www.omg.org/spec/LCC/Countries/Regions/ISO3166-2-SubdivisionCodes-TJ/">http://www.omg.org/spec/LCC/Countries/Regions/ISO3166-2-SubdivisionCodes-TJ/</a>
lcc-3166-2- tl	Timor-Leste	<a href="http://www.omg.org/spec/LCC/Countries/Regions/ISO3166-2-SubdivisionCodes-TL/">http://www.omg.org/spec/LCC/Countries/Regions/ISO3166-2-SubdivisionCodes-TL/</a>
lcc-3166-2- tm	Turkmenistan	<a href="http://www.omg.org/spec/LCC/Countries/Regions/ISO3166-2-SubdivisionCodes-TM/">http://www.omg.org/spec/LCC/Countries/Regions/ISO3166-2-SubdivisionCodes-TM/</a>
lcc-3166-2- tn	Tunisia	<a href="http://www.omg.org/spec/LCC/Countries/Regions/ISO3166-2-SubdivisionCodes-TN/">http://www.omg.org/spec/LCC/Countries/Regions/ISO3166-2-SubdivisionCodes-TN/</a>
lcc-3166-2- to	Tonga	<a href="http://www.omg.org/spec/LCC/Countries/Regions/ISO3166-2-SubdivisionCodes-TO/">http://www.omg.org/spec/LCC/Countries/Regions/ISO3166-2-SubdivisionCodes-TO/</a>
lcc-3166-2- tr	Turkey	<a href="http://www.omg.org/spec/LCC/Countries/Regions/ISO3166-2-SubdivisionCodes-TR/">http://www.omg.org/spec/LCC/Countries/Regions/ISO3166-2-SubdivisionCodes-TR/</a>
lcc-3166-2- tt	Trinidad and Tobago	<a href="http://www.omg.org/spec/LCC/Countries/Regions/ISO3166-2-SubdivisionCodes-TT/">http://www.omg.org/spec/LCC/Countries/Regions/ISO3166-2-SubdivisionCodes-TT/</a>
lcc-3166-2- tv	Tuvalu	<a href="http://www.omg.org/spec/LCC/Countries/Regions/ISO3166-2-SubdivisionCodes-TV/">http://www.omg.org/spec/LCC/Countries/Regions/ISO3166-2-SubdivisionCodes-TV/</a>
lcc-3166-2- tw	Taiwan	<a href="http://www.omg.org/spec/LCC/Countries/Regions/ISO3166-2-SubdivisionCodes-TW/">http://www.omg.org/spec/LCC/Countries/Regions/ISO3166-2-SubdivisionCodes-TW/</a>
lcc-3166-2- tz	Tanzania	<a href="http://www.omg.org/spec/LCC/Countries/Regions/ISO3166-2-SubdivisionCodes-TZ/">http://www.omg.org/spec/LCC/Countries/Regions/ISO3166-2-SubdivisionCodes-TZ/</a>
lcc-3166-2- ua	Ukraine	<a href="http://www.omg.org/spec/LCC/Countries/Regions/ISO3166-2-SubdivisionCodes-UA/">http://www.omg.org/spec/LCC/Countries/Regions/ISO3166-2-SubdivisionCodes-UA/</a>
lcc-3166-2- ug	Uganda	<a href="http://www.omg.org/spec/LCC/Countries/Regions/ISO3166-2-SubdivisionCodes-UG/">http://www.omg.org/spec/LCC/Countries/Regions/ISO3166-2-SubdivisionCodes-UG/</a>
lcc-3166-2- um	United States Minor Outlying Islands	<a href="http://www.omg.org/spec/LCC/Countries/Regions/ISO3166-2-SubdivisionCodes-UM/">http://www.omg.org/spec/LCC/Countries/Regions/ISO3166-2-SubdivisionCodes-UM/</a>
lcc-3166-2- us	United States of America	<a href="http://www.omg.org/spec/LCC/Countries/Regions/ISO3166-2-SubdivisionCodes-US/">http://www.omg.org/spec/LCC/Countries/Regions/ISO3166-2-SubdivisionCodes-US/</a>
lcc-3166-2- uy	Uruguay	<a href="http://www.omg.org/spec/LCC/Countries/Regions/ISO3166-2-SubdivisionCodes-UY/">http://www.omg.org/spec/LCC/Countries/Regions/ISO3166-2-SubdivisionCodes-UY/</a>
lcc-3166-2- uz	Uzbekistan	<a href="http://www.omg.org/spec/LCC/Countries/Regions/ISO3166-2-SubdivisionCodes-UZ/">http://www.omg.org/spec/LCC/Countries/Regions/ISO3166-2-SubdivisionCodes-UZ/</a>
lcc-3166-2- vc	Saint Vincent and the Grenadines	<a href="http://www.omg.org/spec/LCC/Countries/Regions/ISO3166-2-SubdivisionCodes-VC/">http://www.omg.org/spec/LCC/Countries/Regions/ISO3166-2-SubdivisionCodes-VC/</a>



lcc-3166-2- ve	Venezuela	<a href="http://www.omg.org/spec/LCC/Countries/Regions/ISO3166-2-SubdivisionCodes-VE/">http://www.omg.org/spec/LCC/Countries/Regions/ISO3166-2-SubdivisionCodes-VE/</a>
lcc-3166-2- vg	Virgin Islands, British	<a href="http://www.omg.org/spec/LCC/Countries/Regions/ISO3166-2-SubdivisionCodes-VG/">http://www.omg.org/spec/LCC/Countries/Regions/ISO3166-2-SubdivisionCodes-VG/</a>
lcc-3166-2- vi	Virgin Islands, US	<a href="http://www.omg.org/spec/LCC/Countries/Regions/ISO3166-2-SubdivisionCodes-VI/">http://www.omg.org/spec/LCC/Countries/Regions/ISO3166-2-SubdivisionCodes-VI/</a>
lcc-3166-2- vn	Viet Nam	<a href="http://www.omg.org/spec/LCC/Countries/Regions/ISO3166-2-SubdivisionCodes-VN/">http://www.omg.org/spec/LCC/Countries/Regions/ISO3166-2-SubdivisionCodes-VN/</a>
lcc-3166-2- vu	Vanuatu	<a href="http://www.omg.org/spec/LCC/Countries/Regions/ISO3166-2-SubdivisionCodes-VU/">http://www.omg.org/spec/LCC/Countries/Regions/ISO3166-2-SubdivisionCodes-VU/</a>
lcc-3166-2- wf	Wallis and Futuna	<a href="http://www.omg.org/spec/LCC/Countries/Regions/ISO3166-2-SubdivisionCodes-WF/">http://www.omg.org/spec/LCC/Countries/Regions/ISO3166-2-SubdivisionCodes-WF/</a>
lcc-3166-2- ws	Samoa	<a href="http://www.omg.org/spec/LCC/Countries/Regions/ISO3166-2-SubdivisionCodes-WS/">http://www.omg.org/spec/LCC/Countries/Regions/ISO3166-2-SubdivisionCodes-WS/</a>
lcc-3166-2- ye	Yemen	<a href="http://www.omg.org/spec/LCC/Countries/Regions/ISO3166-2-SubdivisionCodes-YE/">http://www.omg.org/spec/LCC/Countries/Regions/ISO3166-2-SubdivisionCodes-YE/</a>
lcc-3166-2- za	South Africa	<a href="http://www.omg.org/spec/LCC/Countries/Regions/ISO3166-2-SubdivisionCodes-ZA/">http://www.omg.org/spec/LCC/Countries/Regions/ISO3166-2-SubdivisionCodes-ZA/</a>
lcc-3166-2- zm	Zambia	<a href="http://www.omg.org/spec/LCC/Countries/Regions/ISO3166-2-SubdivisionCodes-ZM/">http://www.omg.org/spec/LCC/Countries/Regions/ISO3166-2-SubdivisionCodes-ZM/</a>
lcc-3166-2- zw	Zimbabwe	<a href="http://www.omg.org/spec/LCC/Countries/Regions/ISO3166-2-SubdivisionCodes-ZW/">http://www.omg.org/spec/LCC/Countries/Regions/ISO3166-2-SubdivisionCodes-ZW/</a>

The following list is of the OWL files corresponding to the namespaces listed in Table B-1, above, which are in RDF/XML format. For each of the files listed, there are also the following two additional files with the “.rdf” in the filename replaced by:

- .xmi – the same content in XMI format according to the ODM metamodel
- .xml – the same content in XMI format according to the UML Profile for ODM

Each of these files (including the .xml and .xmi files described above) is published to the OMG server in the following two directories:

- <http://www.omg.org/spec/LCC/Countries/Regions/> represents the latest version
- <http://www.omg.org/spec/LCC/20170801/Countries/Regions/> represents a stable, version-specific IRI for this version 1.0 of the LCC Specification.





ISO3166-2-SubdivisionCodes-US.rdf	ISO3166-2-SubdivisionCodes-VG.rdf	ISO3166-2-SubdivisionCodes-WS.rdf
ISO3166-2-SubdivisionCodes-UY.rdf	ISO3166-2-SubdivisionCodes-VI.rdf	ISO3166-2-SubdivisionCodes-YE.rdf
ISO3166-2-SubdivisionCodes-UZ.rdf	ISO3166-2-SubdivisionCodes-VN.rdf	ISO3166-2-SubdivisionCodes-ZA.rdf
ISO3166-2-SubdivisionCodes-VC.rdf	ISO3166-2-SubdivisionCodes-VU.rdf	ISO3166-2-SubdivisionCodes-ZM.rdf
ISO3166-2-SubdivisionCodes-VE.rdf	ISO3166-2-SubdivisionCodes-WF.rdf	ISO3166-2-SubdivisionCodes-ZW.rdf

This page intentionally left blank.

# Annex C: Generating Ontologies from External Code Definitions

(informative)

This Annex describes how the OWL (RDF/XML) files in this specification are generated from the published ISO and UN Sources. This enables the automated generation of updated ontologies when ISO/UN publish their updates.

## C.1 ISO 3166

The source is the XML file published by ISO (and available via subscription) as `iso_country_codes.xml`. This XML file is processed by two separate XSL files (details below) to produce the OWL files. There are common algorithms used by each of these files, as follows:

### C.1.1 Camel Case

This turns a published country, subdivision or territory name into a camel case name used for the URI of the ontology element (a `NamedIndividual`). The steps are as follows:

- Split the name into tokens using the space character
- Convert initial character of each token to uppercase
- Normalize Unicode characters using the NFD algorithm and omit any characters outside the Basic Latin character set
- Remove apostrophes and periods
- Truncate the string at the first character that is not alphanumeric or hyphen

### C.1.2 Country Name Overrides

In general, the URIs for countries use the above Camel Case algorithm applied to the published short name of the country (the English short name if there are many).

To ensure uniqueness of URIs, following countries are overridden before applying the above algorithm. Table C-1 shows the ISO 3166-1 two-character code and the name used.

**Table C-1 ISO 3166-1 Overrides**

ISO 3166-1 Alpha 2 Code	Country Name
CC	Cocos Keeling Islands
CD	Congo Democratic Republic Of
KP	Korea Democratic Peoples Republic Of
KR	Korea Republic Of
VG	Virgin Islands British
VI	Virgin Islands US

### C.1.3 Country Codes Processing

The file ISO-3166-1-CountryCodes.rdf is produced using the XSL file ISO-3166-Countries.xsl.

The outline of processing as follows:

- Generate the Ontology element
  1. Include boiler plate information using OMG's Specification metadata ontology.
  2. Insert the timestamp from the ISO XML file as the Dublin Core issued date of the ontology.
  3. Generate a versionIRI using a hard-coded OMG-format timestamp (needs to be updated each version)
- Generate Individuals for the two CodeSets (2 and 3-character alpha codes)
- Generate sameAs statements to allow use of URIs in the adopted version of the LCC Standard: United States, UnitedKingdom and CzechRepublic
- Generate Individuals for 3 Languages which are referenced by Country elements in ISO-3166 but not yet included in the ISO 639-2 Languages standard. They have language codes of 001, 002 and crs. The latter is included in ISO 639-3, but the 639-3 codes are not provided as a part of the LCC language ontologies in the LCC 1.0 Specification due to questions with respect to intellectual property rights defined on the registration authority (SIL) web site.
- Process each Country as follows:
  1. Generate URI using Country Name Overrides and Camel Case algorithms in previous section
  2. Process labels for country using specific ontology properties for English and French names (short, long, upper case) with other labels represented using hasLocalName
  3. Process each language marked as Administrative. Look up the 3-character language code from the ISO file in the LCC languages ontology file in order to find the correct LCC URI to link to.
  4. Include any Remarks in English as values of the hasRemarks property.
  5. Process the 2- and 3-character codes as separate NamedIndividuals of type Alpha2Code and Alpha3Code respectively.

### C.1.4 Subdivision Codes Processing

The XSL file ISO-3166-Subdivisions.xsl produces many ontology files in the subdirectory Regions, each with the name ISO3166-2-SubdivisionCodes-XX.rdf where XX is the 2-character code for the country. A file is only produced if the country has reported subdivisions or territories.

A further output is the list of such files which is incorporated into the About file by adding boilerplate.

The outline of processing is as follows:

- For each country that has a subdivision or territory
  1. Create a file in the Regions subdirectory
  2. Generate the Ontology element
    - a) Include boiler plate information using OMG's Specification metadata ontology.

- b) Insert the timestamp from the ISO XML file as the Dublin Core issued date of the ontology.
- c) Generate a versionIRI using a hard-coded OMG-format timestamp (needs to be updated each version)
- d) For each category (e.g., “county”, “district”) for the country in the ISO XML file:
  - Generate an Individual of class GeographicRegionKind. The URI is the English name of the category converted to Camel Case and appended to the URI of the country-specific ontology.
- e) For each subdivision in the ISO XML file
  - Generate an individual of class CountrySubdivision. The URI is the English name of the subdivision converted to Camel Case and appended to the URI of the country-specific ontology. The overrides provided in Table C-2, below, are required to ensure uniqueness, where a country has subdivisions with the same name at different levels.

**Table C-2 ISO 3166-2 Country Subdivision / Code Overrides**

ISO 3166-2 Code	Country Subdivision Name
AZ-SA	Ski-Municipality
AZ-YE	Yevlax-Municipality
AZ-LA	Lnkran-Municipality
BG-22	SofiaStolitza
HU-VM	Veszprem-City
LA-VT	Viangchan-Prefecture
MU-PU	PortLouis-City
MZ-MPM	Maputo-City
TW-HSZ	Hsinchu-City
TW-CYI	Chiayi-City
UZ-TK	Toshkent-City

- Link to the category via isClassifiedBy property
  - Link to the country and any parent subdivision
  - If the ISO file has property subdivision-related-country then create a sameAs link to the element in the ISO-3166-1 ontology
  - Process the subdivision code as an Individual of class GeographicRegionIdentifier
  - Recursively process any subdivisions of the subdivision
- f) For each territory in the ISO XML file
- Generate an individual of class Territory
  - Link to the category “Territory” via isClassifiedBy property
  - Link to the country



## C.2 UN M49 Region Codes

The UN M49 information is used to create regions at different levels. The processing is as follows, and makes use of two tools prior to applying XSL.

- TARQL, to convert from CSV to RDF (Turtle). Available at <https://github.com/tarql/tarql/releases>. Note that release 1.2 or later is required.
- Rapper (part of Raptor), to convert from turtle to RDF/XML. Available from <http://download.librdf.org/source/>. Version used was 2.0.15.

The steps are:

- Download the English CSV file as M49.csv from the UN site <https://unstats.un.org/unsd/methodology/m49/overview/>
- Edit the column headers in Row 1 to remove all spaces and hyphens
- Run TARQL on the CSV file using the SPARQL file M49.sparql included in this specification. The command line is as follows:  

```
tarql -dedup 1000 M49.sparql M49.csv >m49.rdf
```
- Run rapper to convert to RDF/XML. The command line is as follows.  

```
rapper -I turtle -o rdfxml-abbrev m49.rdf >m49.xml
```
- Apply M49-Format.xsl to the output to clean up the ontology and add boiler plate.

Overall the conversion is as follows. In general, each populated column in the CSV file results in an extra level of GeographicRegion Individual; each is linked to its parent using property isSubregionOf.

At the lowest level, that of countries, new individuals are not created, but triples are added linking the counties in the ISO3166-CountryCodes ontology to the M49 ontology. The 3-letter country code from the CSV file is used to look up the correct country URI in the ISO3166-CountryCodes.rdf file.

For each column in the original CSV file the following table states the corresponding ontology element. Columns not mentioned here are ignored. Where a value is repeated only one element is created (*e.g.*, Africa appears in many rows but only one Individual is created). The ontology also includes declarations of Individuals for four GeogaphicRegionKinds which are used as per Table C-3, below.

**Table C-3 ISO 3166-2 Country Subdivision / Code Overrides**

Column	Ontology Mapping
Global Name	GeographicRegionKind = Planet
Region Name	GeographicRegionKind = Continent

Subregion Name	GeographicRegionKind = Region
Intermediate Region Name	GeographicRegionKind = Subregion
Country or Area	Used to lookup country in ISO3166-CountryCodes.rdf
M49 Code	NumericRegionCode property

This page intentionally left blank.